

Community Science

We are volunteers



Peak District National Park and South Pennine Moorlands

- Peak District is within 1 hour's drive for 20 million people (Alan's Ramblings, 2004).
- Probably most visited moorlands worldwide with tradition of access across wide areas.
- First UK National Park created in 1951.

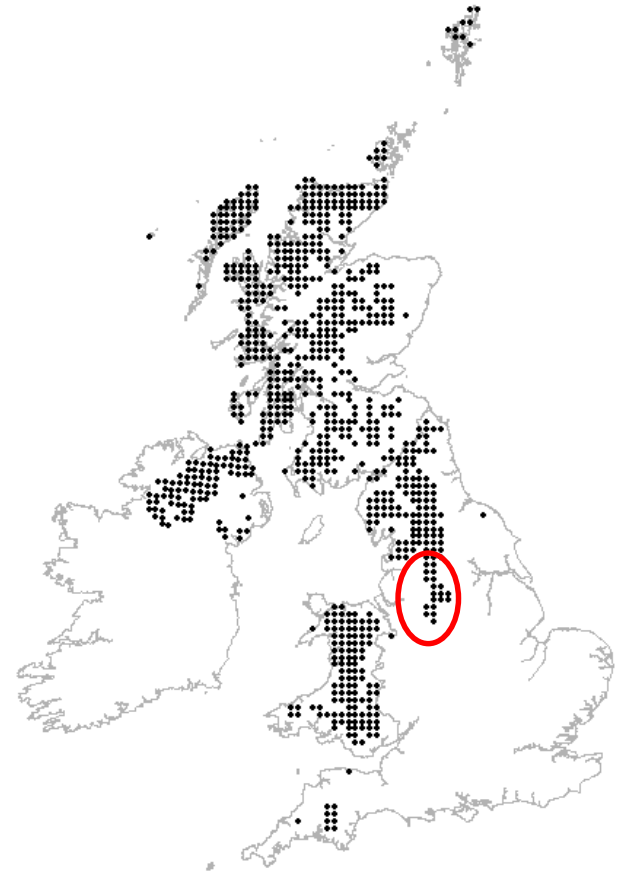


Priority habitat: Blanket bog



Priority habitat: Blanket bog

- Water and mineral source comes from rainwater, mist & cloud-cover (ombrotrophic).
- Nutrient-poor and acidic, dominated by acid-loving plants, especially *Sphagnum*.
- 10–15 % global resource in UK.
- South Pennines represents most south-easterly occurrence in Europe.

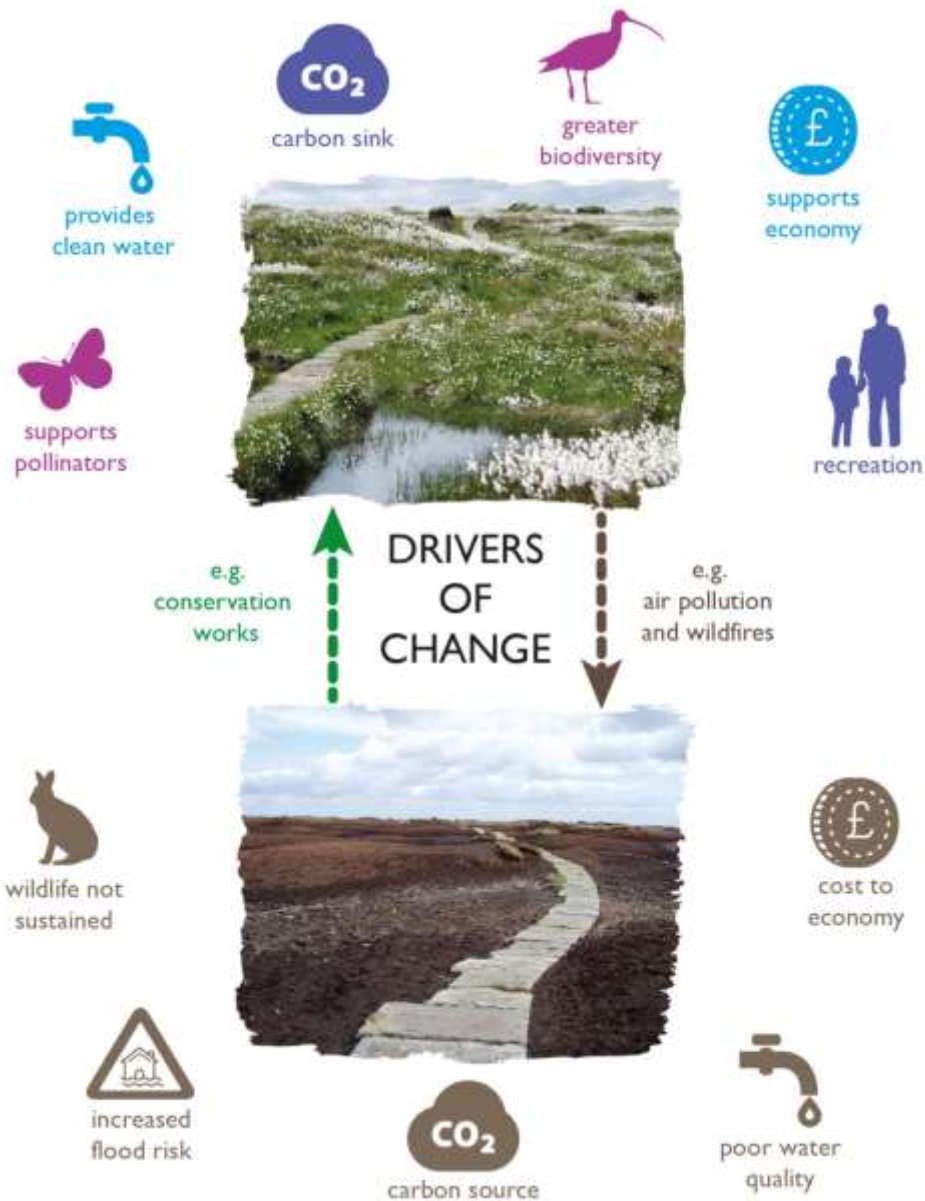


Priority habitat: Blanket bog



Black Hill 2005







Community Science aims:

- Monitoring climate change and its impact on the uplands of the South Pennine Moors and its wildlife.
- Focussing on indicators
- Engaging and equipping volunteers to monitor these indicators across the landscape and for a long-time.
- Enable communities to find out about, get involved with and care about moorland conservation through data recording.

Data collected will help to:

- Monitor changes in the physical environment.
- Inform future conservation land management.

Community Science

connecting people to nature

Help us to understand how these birds are being affected by climate change

How the project will provide information on the birds and what it will be like when you see them

Swift

How to see them: usually seen in the evening, often in large numbers, flying over the house.

Why we're interested: Swifts are the only bird that lives its whole life in the air. They are the only bird that can fly upside down.

What to look for: Swifts are small, dark birds with long, thin wings. They have a white patch on their forehead.

Green Field-Sparrow

How to see them: usually seen in the morning, often in small groups, on the ground.

Why we're interested: Green Field-Sparrows are one of the most common birds in the UK. They are also one of the most important birds for the environment.

What to look for: Green Field-Sparrows are small, brown birds with a white patch on their forehead.

House Martin

How to see them: usually seen in the evening, often in large numbers, flying over the house.

Why we're interested: House Martins are one of the most common birds in the UK. They are also one of the most important birds for the environment.

What to look for: House Martins are small, brown birds with a white patch on their forehead.

Ring Chirrup

How to see them: usually seen in the morning, often in small groups, on the ground.

Why we're interested: Ring Chirrups are one of the most common birds in the UK. They are also one of the most important birds for the environment.

What to look for: Ring Chirrups are small, brown birds with a white patch on their forehead.

21



Freeport RTHR-SLGZ-HJEY
Community Science Project
Moors for the Future Partnership
The Moorland Centre
Edale
Derbyshire
S33 7ZA



MoorWILD

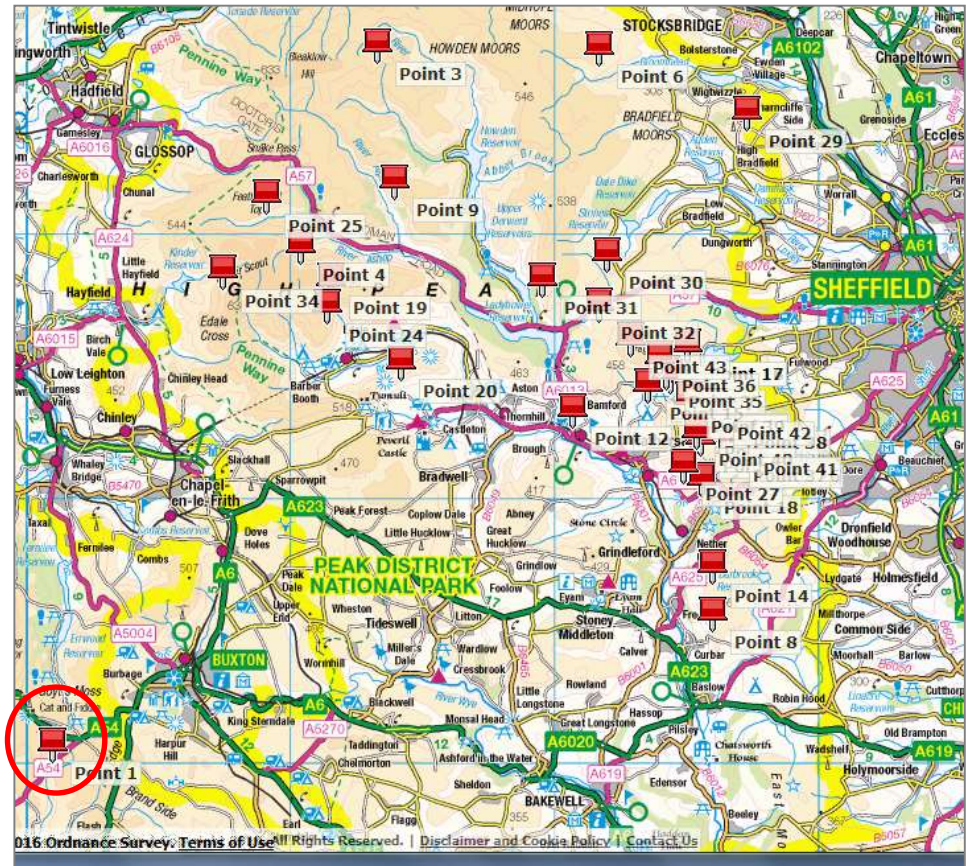
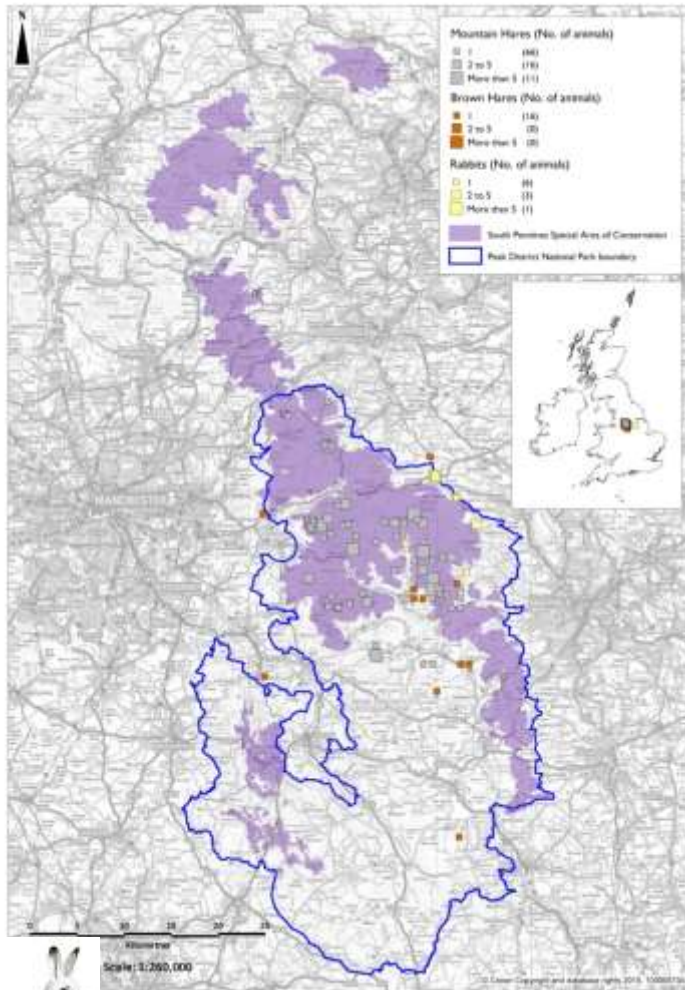
iRecord (www.brc.ac.uk/irecord)
- verified by experts.

Science from the community

- Change in distribution?
- Mismatch of coat colour?
- Competition with *Lepus europeaus*?

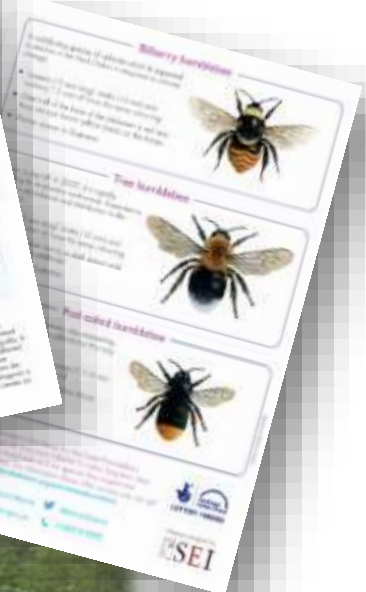


Science from the community



Community Science

connecting people to nature



What can the data tell us?

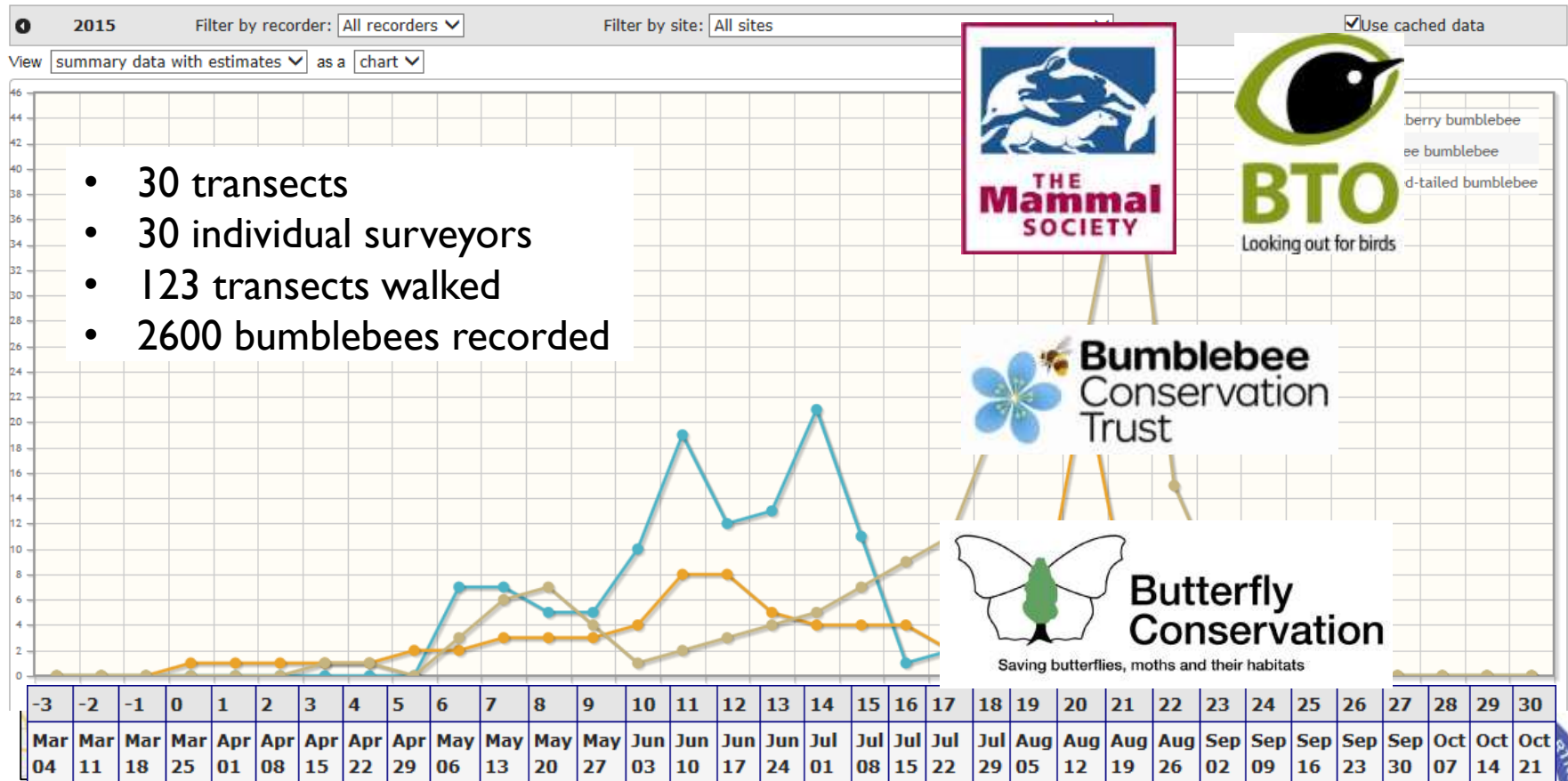


Moors for the Future Bumblebee Transect Summary Report

Annual Summary data shows a summary of the data arranged by week.

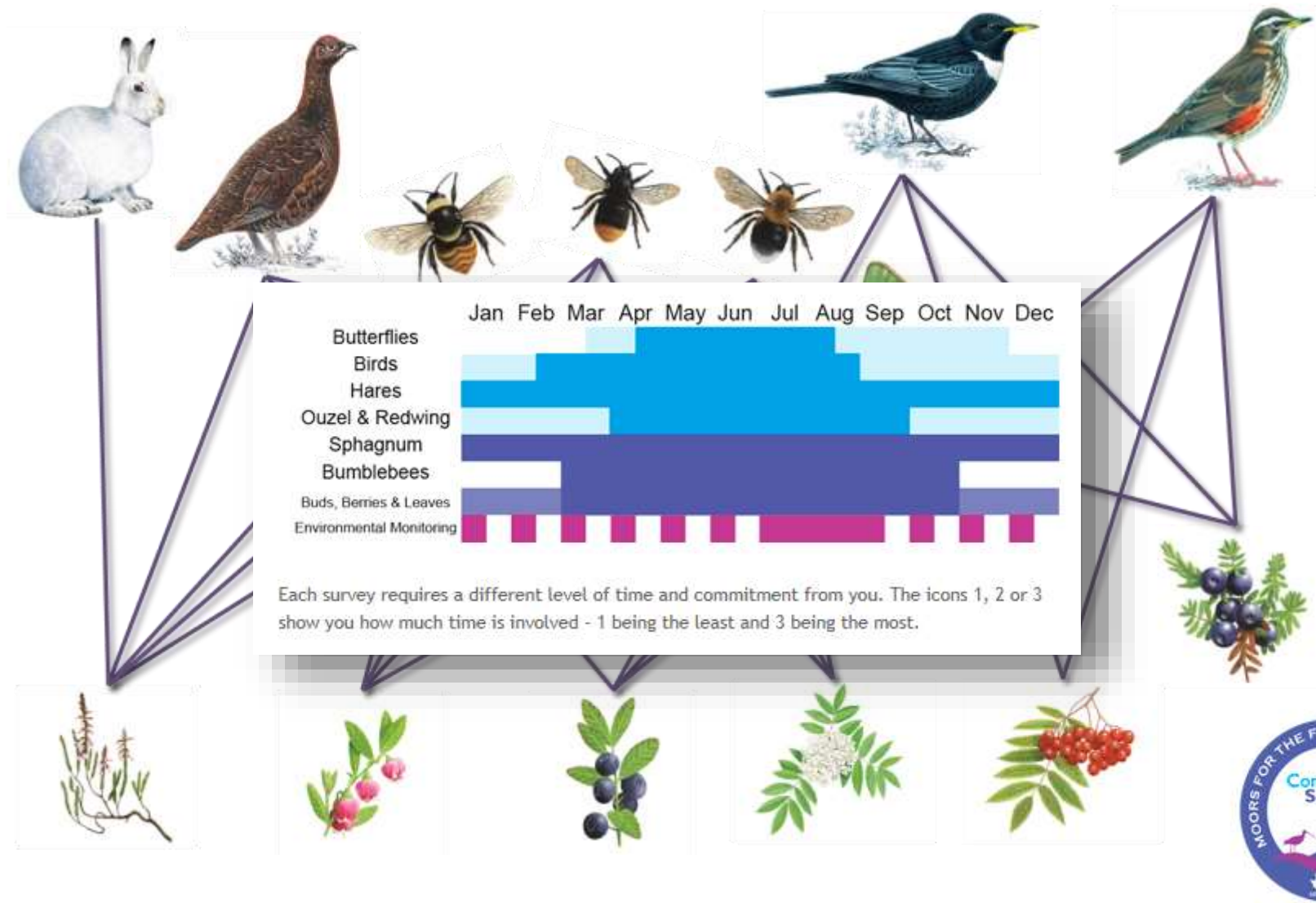
Figures shown in red are (or include) estimates for missing weeks, based on a simple interpolation.

Raw data will just show the counts exactly as entered. When looking at single sites in Raw data form, you can edit your counts by clicking on the date at the top of the column.



Community Science

connecting nature to nature



UK climate indicators

LAND TEMPERATURE

8 out of 10 warmest years for the UK have occurred since 2002

...and all the top ten warmest years have all occurred since 1990.

Data source:
Met Office national temperature and rainfall climate series (Perry and Hollis, 2005)

PRECIPITATION

7 out of 10 wettest years for the UK have occurred since 1998



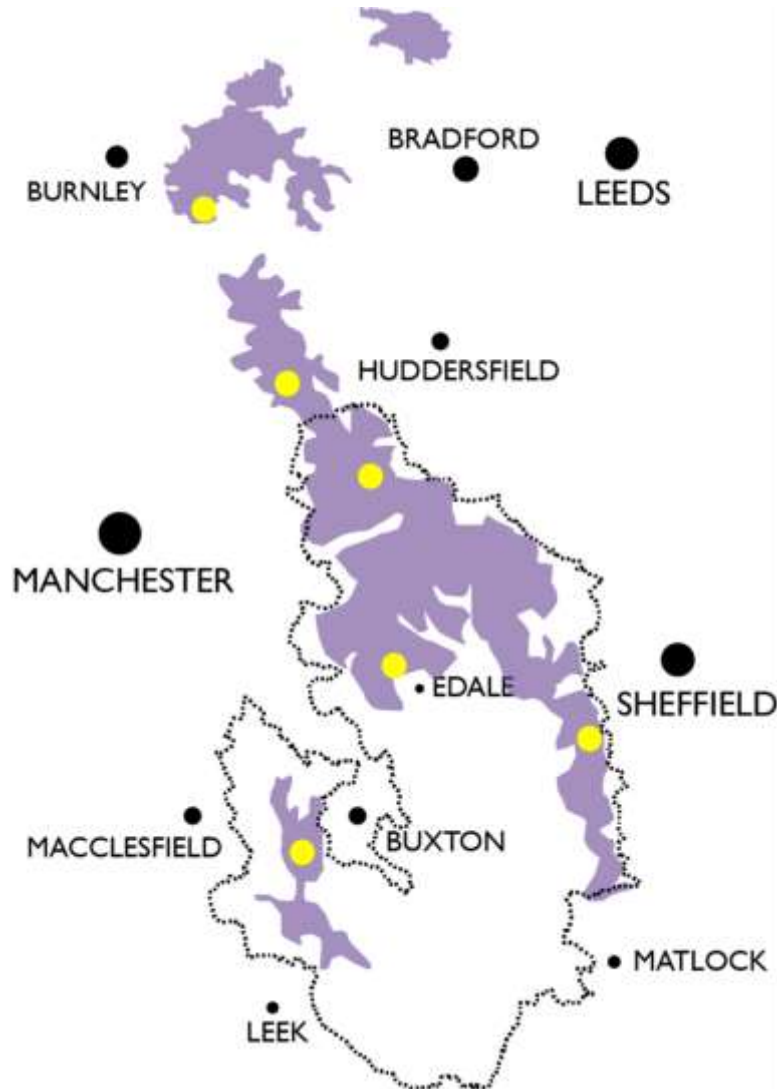
Data source: Met Office national temperature and rainfall climate series (Perry and Hollis, 2005)

LACK OF SNOW

With the notable exceptions of 2010 and 2013, widespread and substantial deep snow events have been relatively rare in recent decades



South Pennines climate indicators

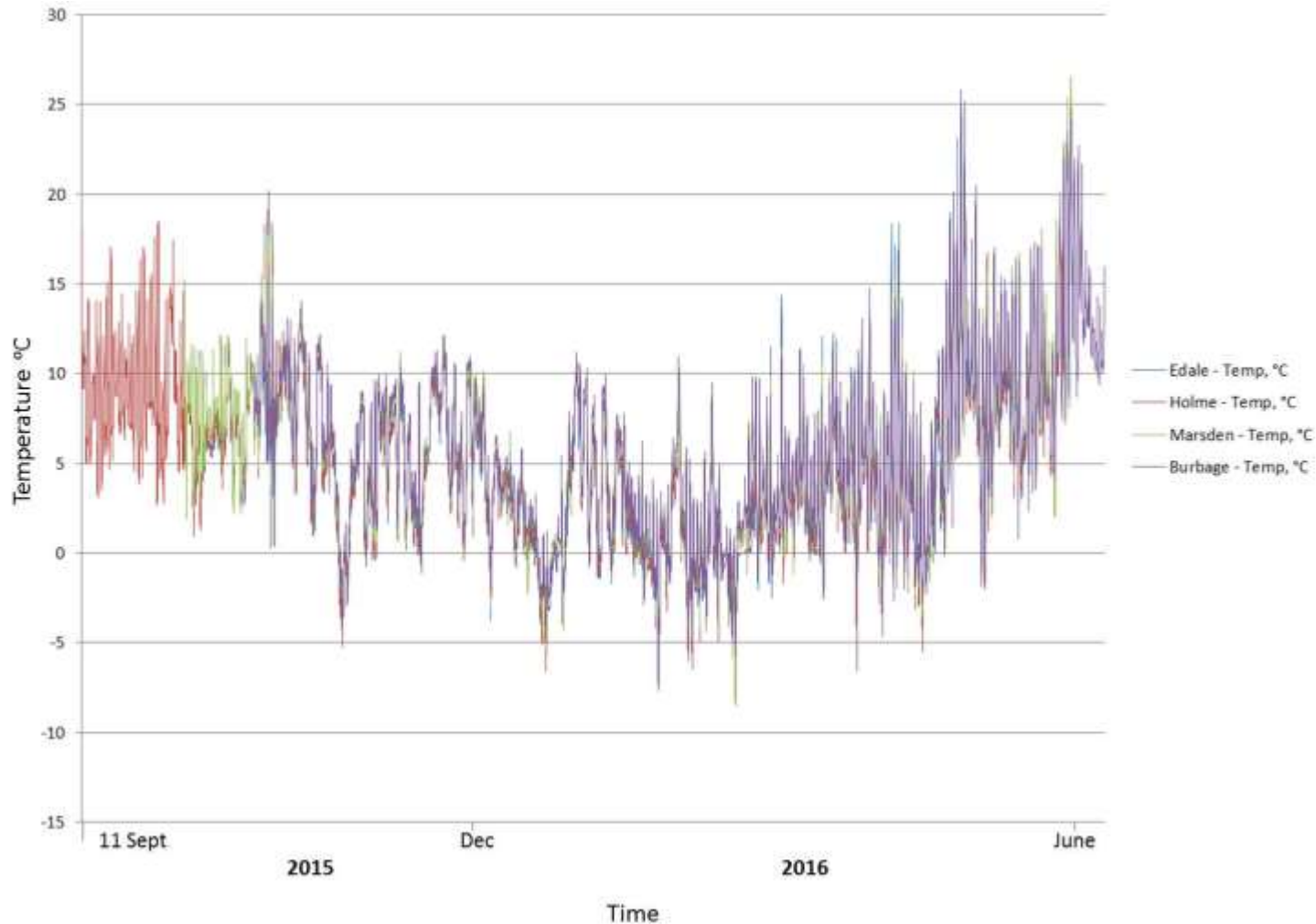


Predicted:

- hotter, drier summers
- warmer, wetter winters

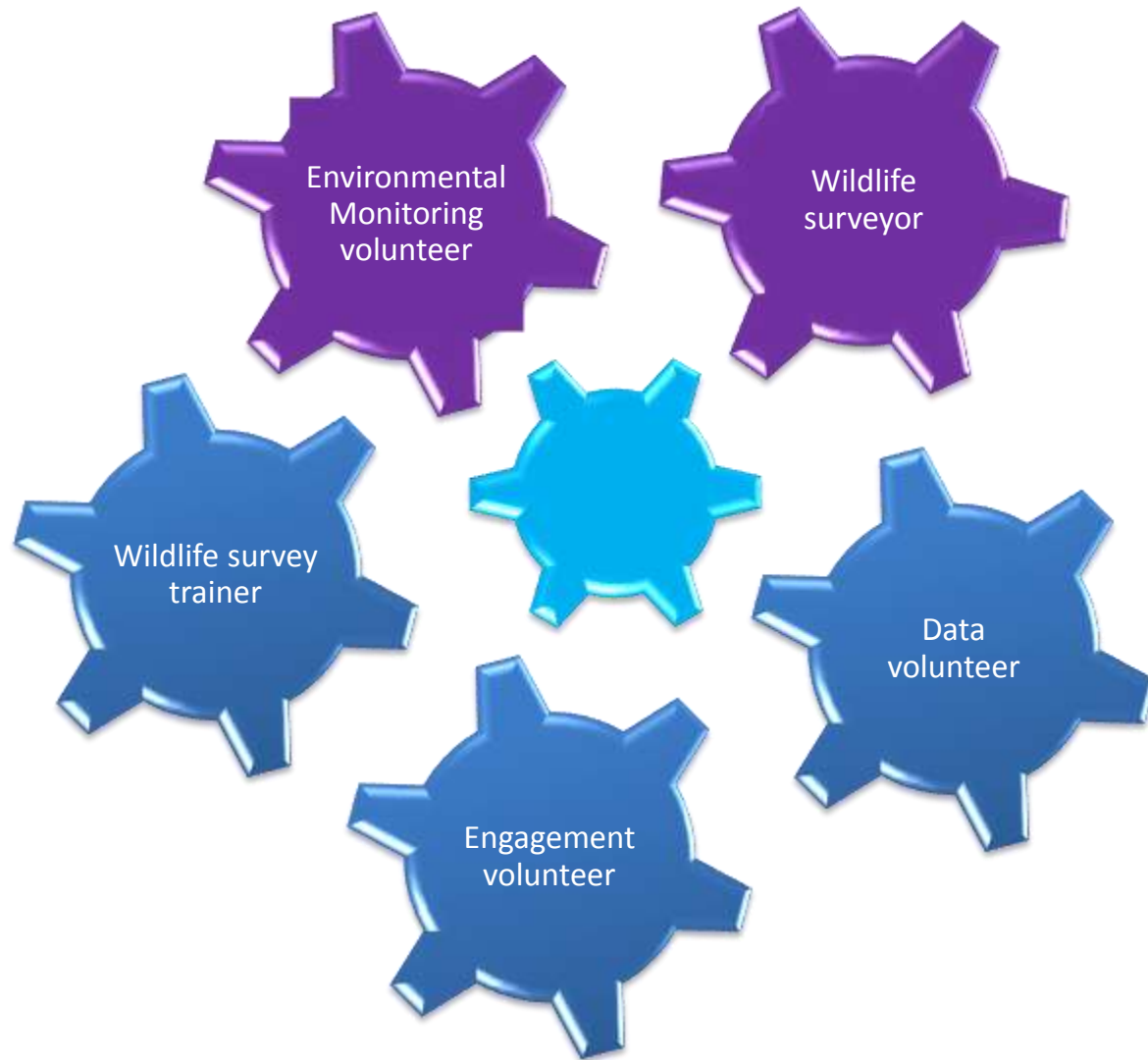


South Pennines climate indicators



Community Science

connecting people to people



Community Science

connecting people to nature



Crisis



 UNIVERSITY
of DERBY

 The
University
Of
Sheffield.



**Eastern Moors
Partnership**



**PEAK
DISTRICT
NATIONAL
PARK**



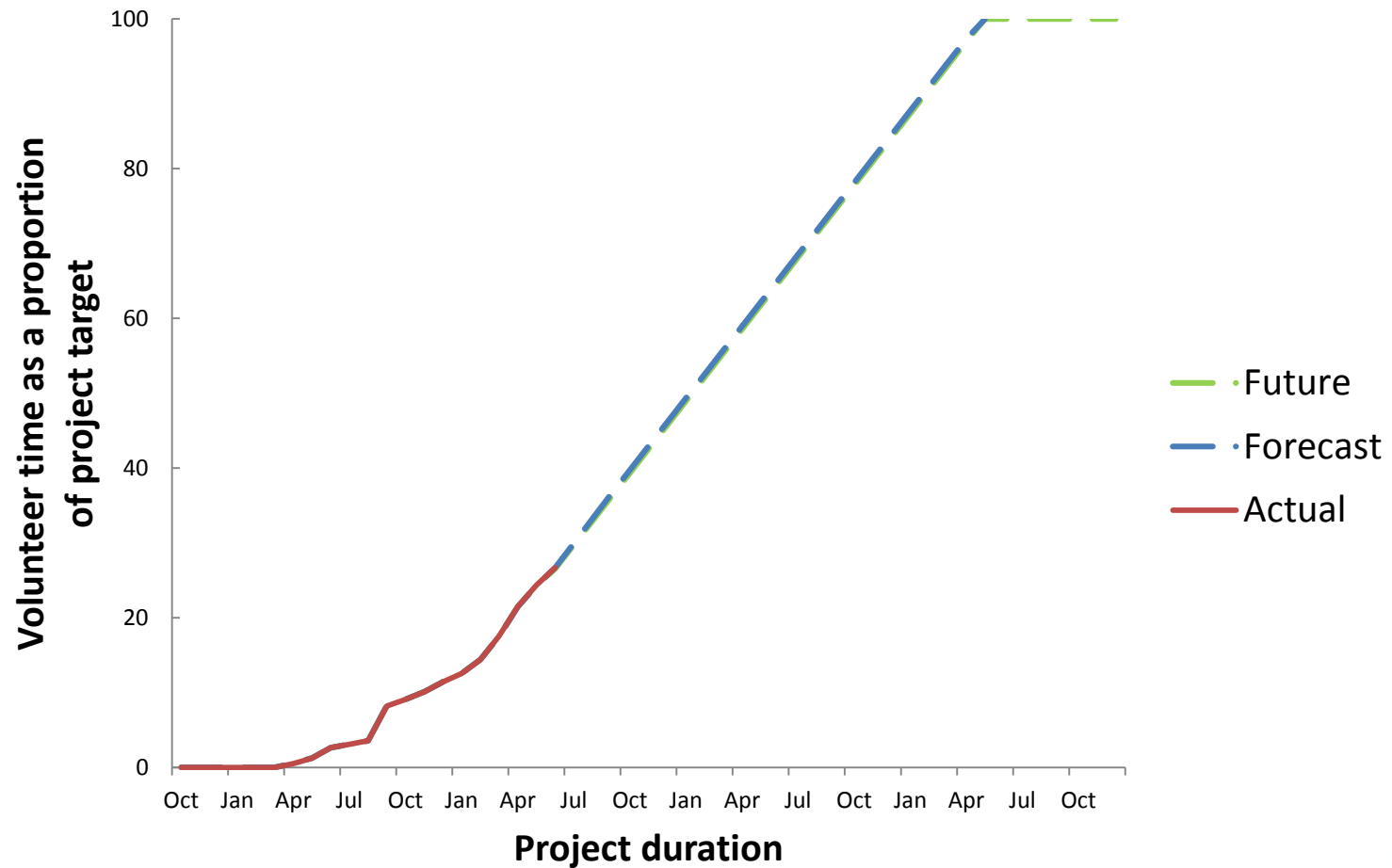
Community Science

Lessons & challenges

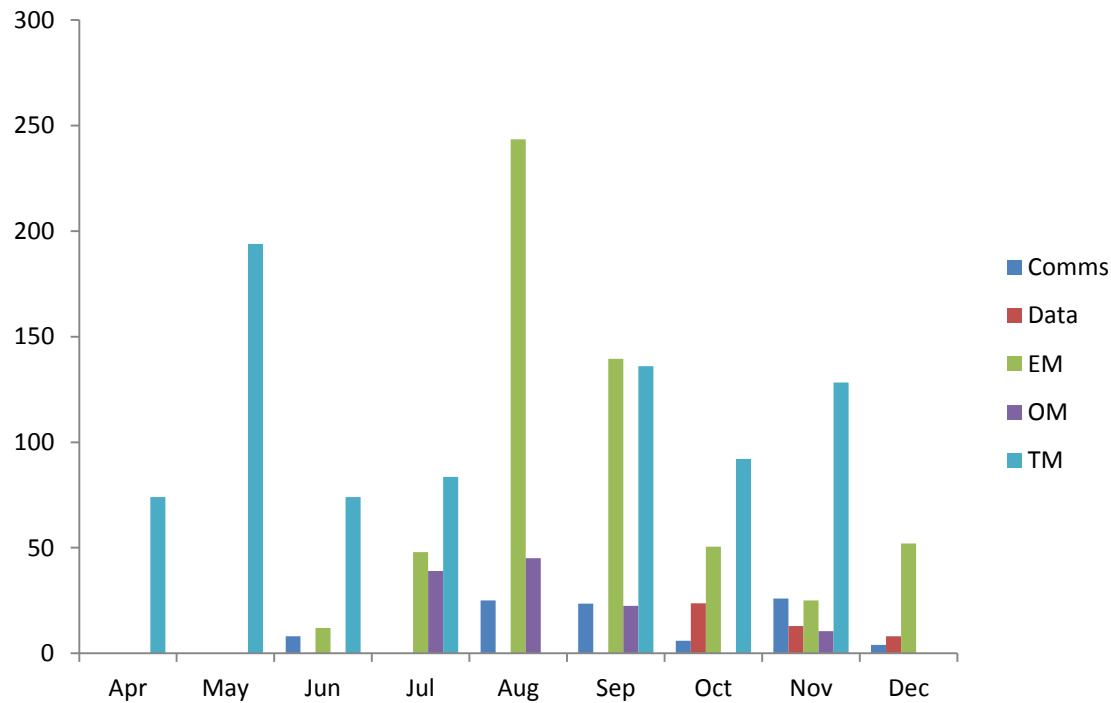
- Gaining momentum within funding timeframes



We are volunteers – gaining momentum



Community Science – gaining momentum



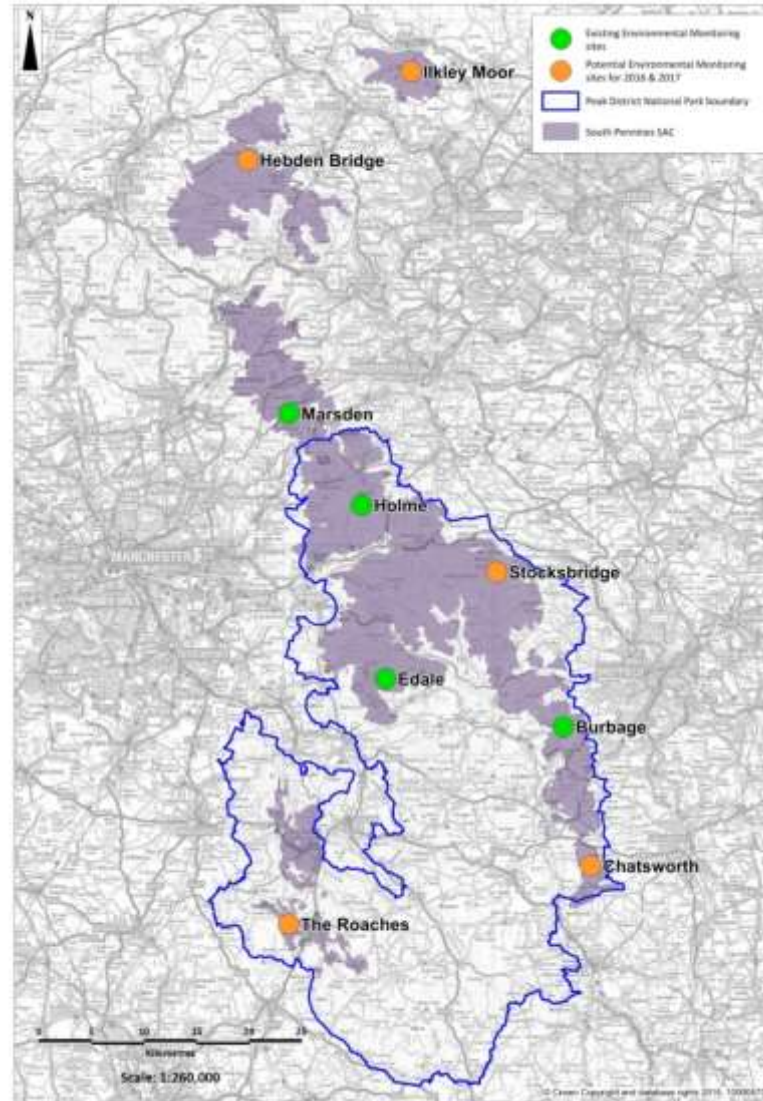
Engage with MoorCitizens on:



Community Science

Lessons & challenges

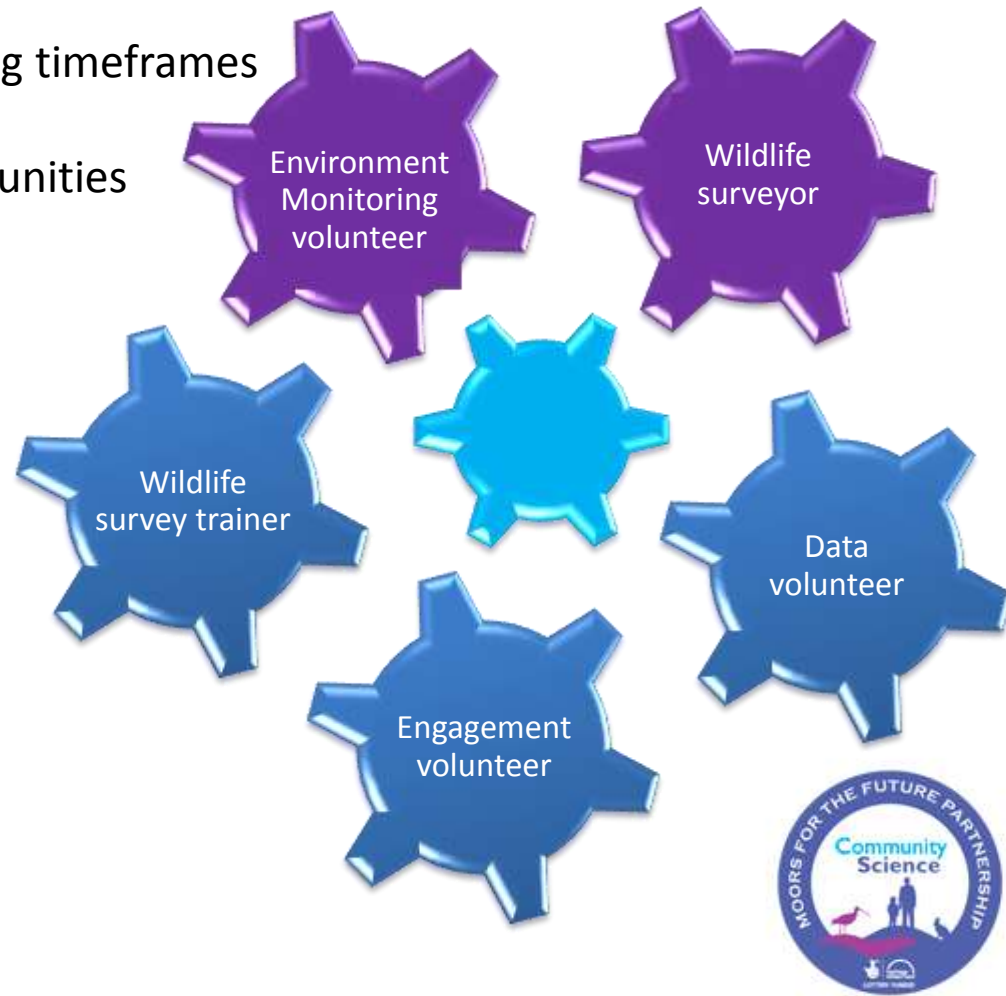
- Gaining momentum
- Flexibility



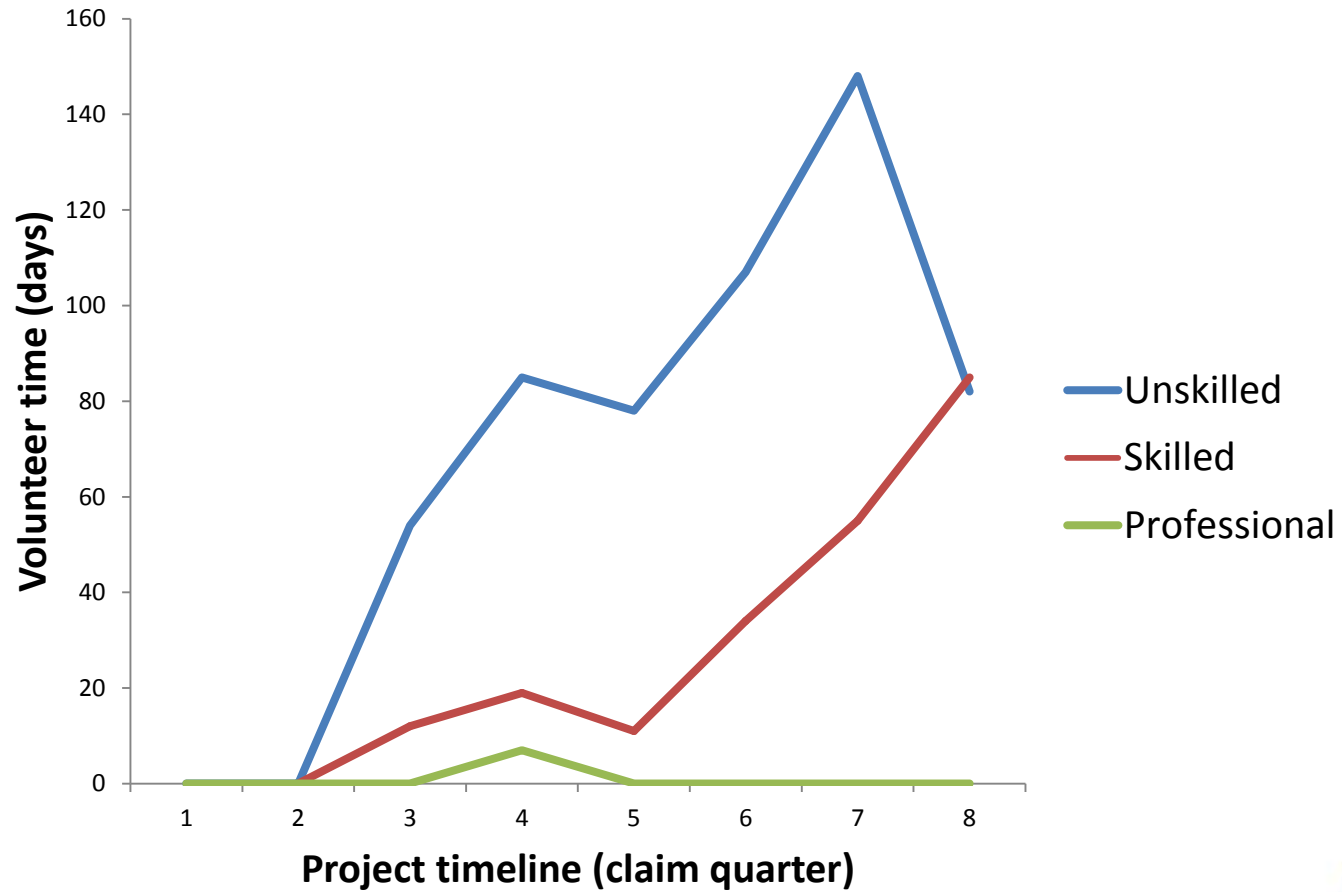
Community Science

Lessons & challenges

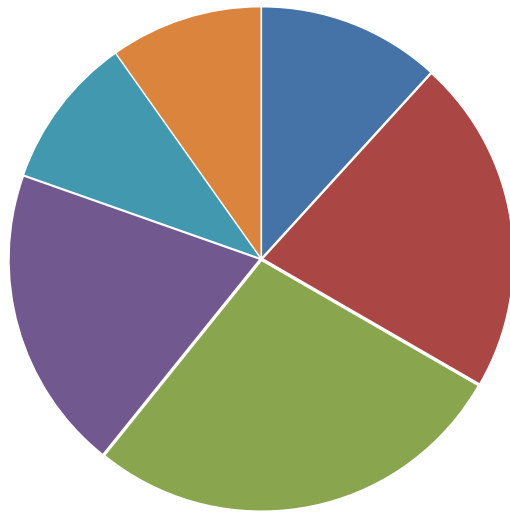
- Gaining momentum within funding timeframes
- Flexibility – communities / opportunities
- Core staff resource
- Sustainability



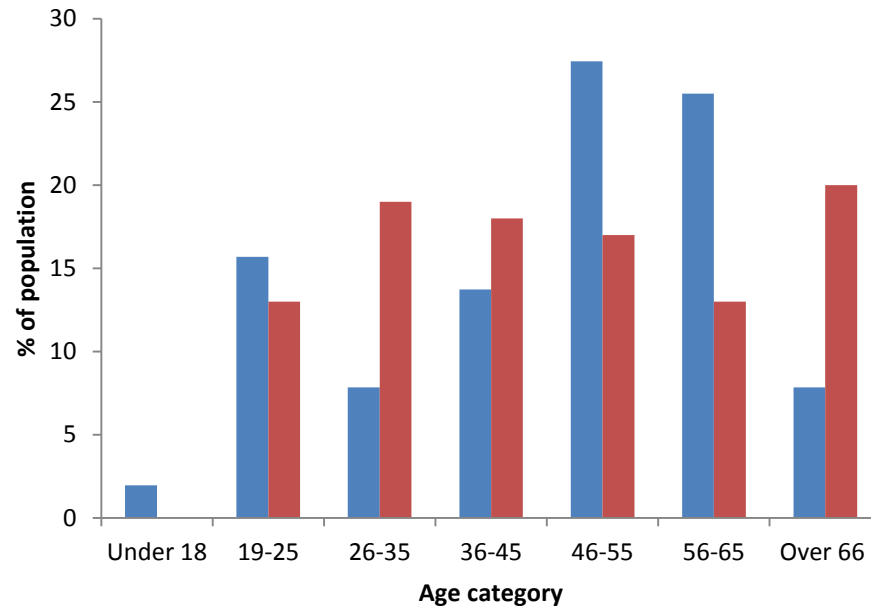
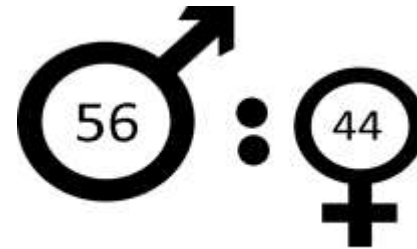
We are volunteers – up-skilling



We are Community Science volunteers



- F/T education
- F/T employment
- P/T employment
- Retired
- Self-employed
- Unemployed

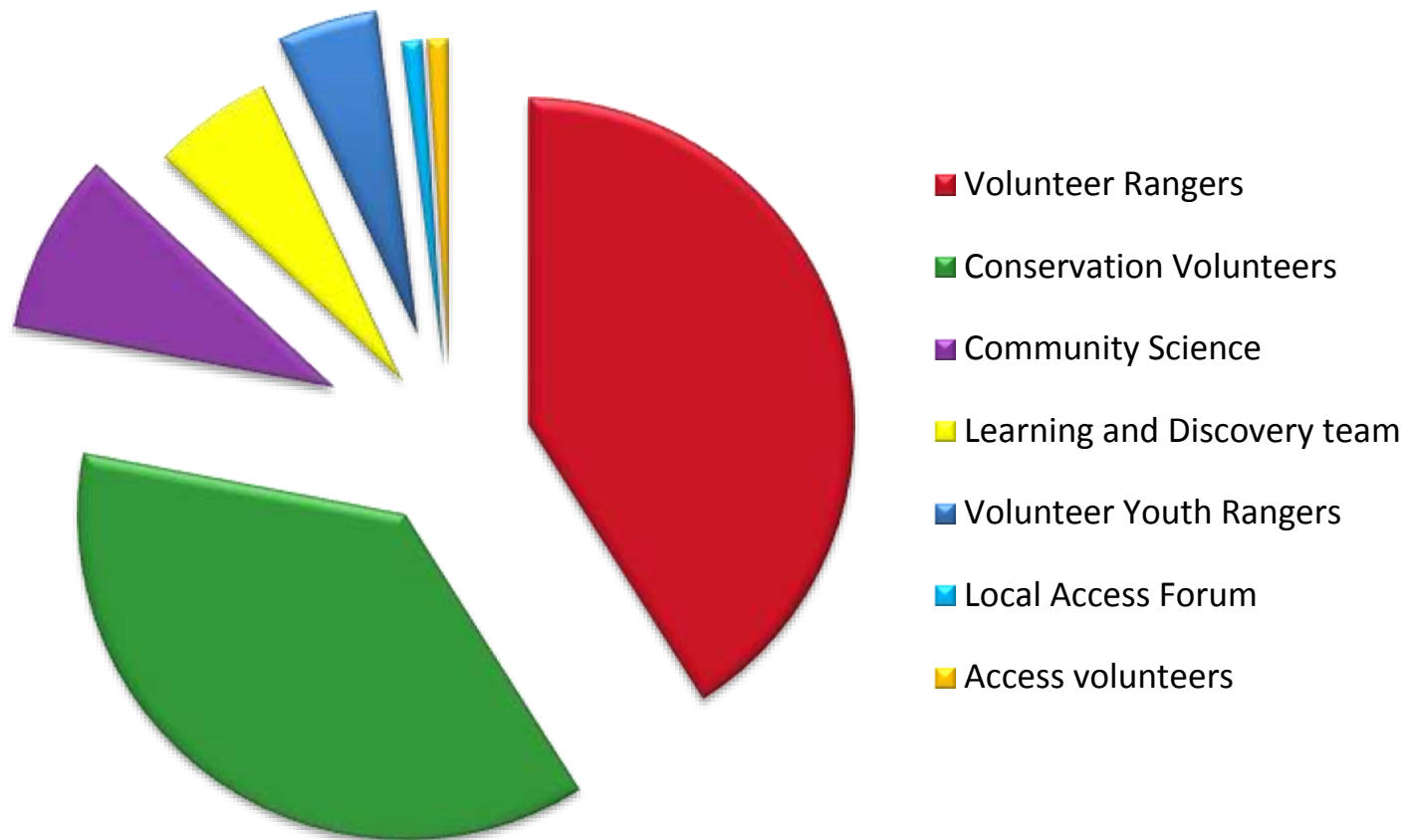


- Community scientists
- Sheffield residents



We are

Peak District National Park volunteers





Dear Community Scientist,

Welcome to Issue 1 of the new quarterly newsletter from **Community Science** - Moors for the Future's unique volunteer project - tracking the effects of climate change on moorlands.

Read on for updates, events, and ways you can get involved, or [sign up today and make a difference!](#)

Sir David



*Just wish to be
Community Science Project
David Attenborough*

We were delighted recently when Community Science received these words of encouragement

Photo competition 2015



We would like to invite you to take part in this year's photo competition, the theme of which is 'Wildlife and Moorland'.

You could win **2 fabulous signed books worth over £40**. Judges this year include Kate MacRae (Wildlife Kate) and Paul Hobson



MoorCitizens



Thank you



MoorCitizens



Partner organisations



www.moorsforthefuture.org.uk

