

# SIGGEN SEMINAR 2017



## **Protected Areas for Sustainable Agriculture:**

Sharing experiences from across Europe that support agriculture in Protected Areas.

**10<sup>th</sup>-13<sup>th</sup> March 2017**



giving  
nature  
a home

# Building partnerships for conservation on farmland

Helping give nature a home



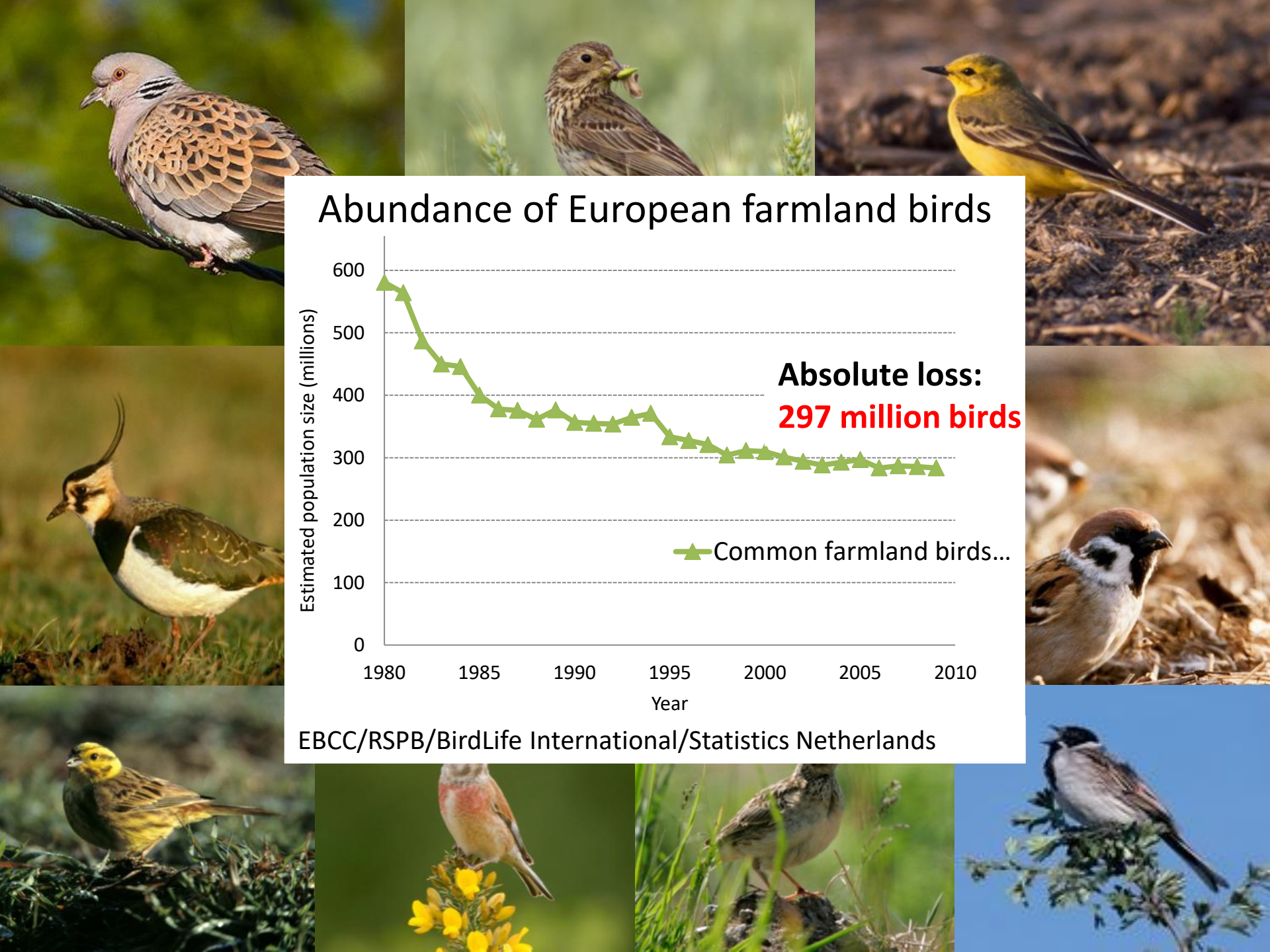


giving  
nature  
a home

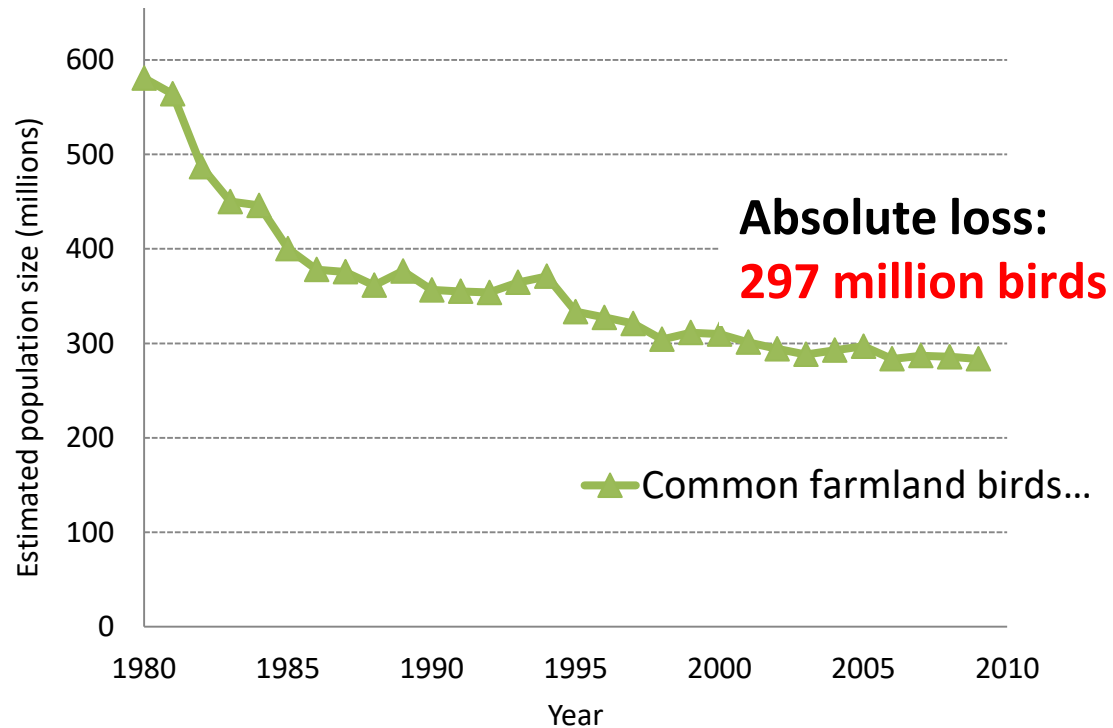
**LIFE08/INF/UK/214**

“Promoting the importance of the  
EU Birds Directive in conservation  
management on farmland (2010-2013)”





## Abundance of European farmland birds



EBCC/RSPB/BirdLife International/Statistics Netherlands



giving  
nature  
a home

## **Actions:**

1. Volunteer & Farmer Alliance
2. Farm Conservation Advice
3. Nature of Farming Award
4. Demonstration farms
5. Information boards
6. Technical Events
7. Conferences
8. Media



# Local birdwatchers are trained up to carry out farm bird surveys

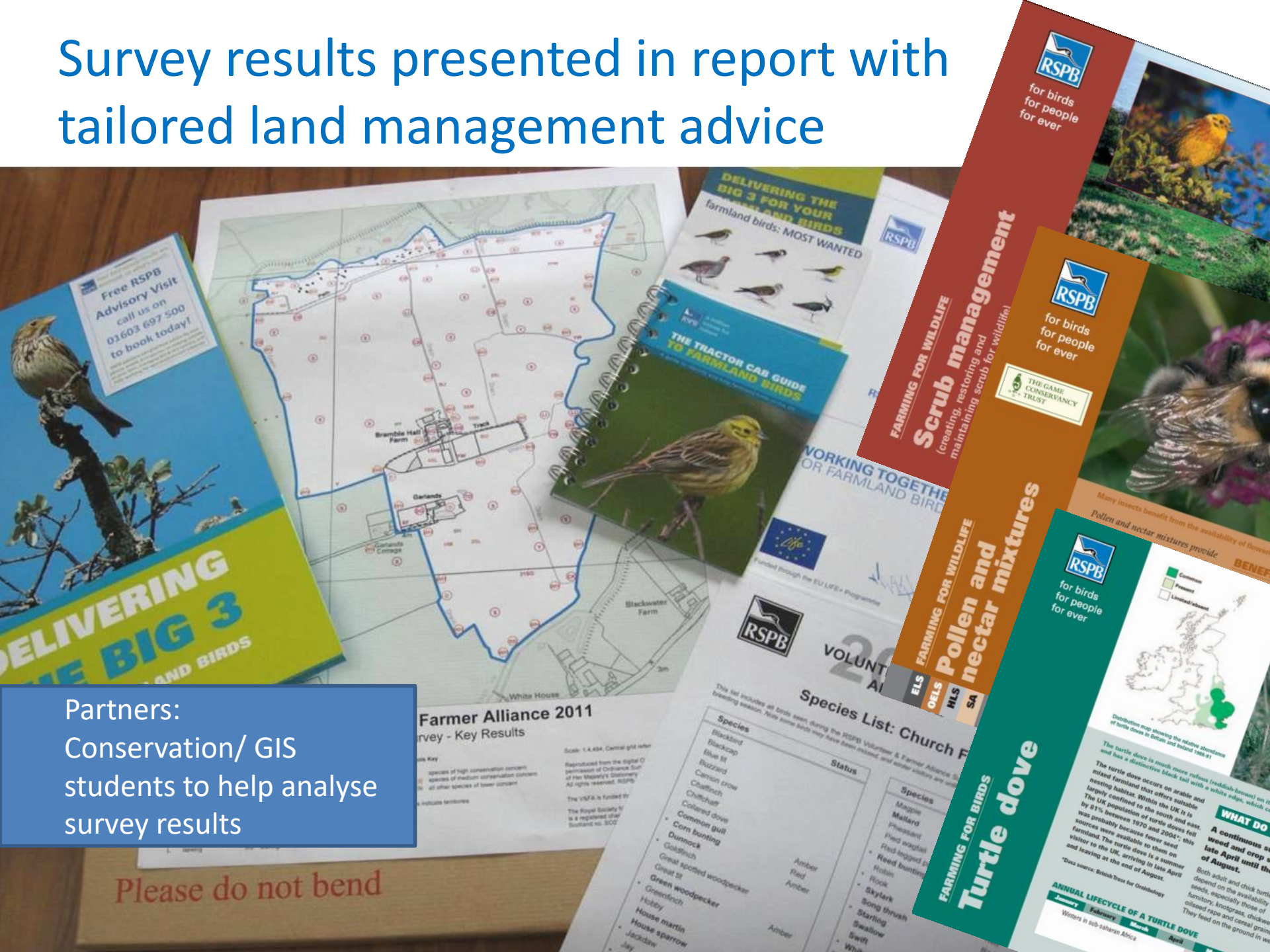
A photograph of three people in a field of yellow flowers, likely rapeseed. On the left, a man with grey hair and a beard is looking through binoculars. In the center, a woman wearing a hat and glasses is also looking through binoculars. On the right, another woman is pointing towards the distance. The background shows a hazy landscape with trees and hills under a soft, warm light, suggesting early morning or late afternoon.

Partners:  
Local Birdwatchers

# Survey results presented in report with tailored land management advice

Partners:  
Conservation/ GIS  
students to help analyse  
survey results

Please do not bend



Species List: Church Farm

Species	Status
Blackbird	Amber
Blackpool	Red
Blue tit	Amber
Buzzard	
Canon crow	
Chaffinch	
Chiffchaff	
Colared dove	
Common gull	
Corn bunting	
Duncock	
Goldfinch	
Great spotted woodpecker	
Great tit	
Green woodpecker	
Robin	
House martin	
House sparrow	
Jackdaw	
Jay	

Species List: Church Farm

Species	Status
Magpie	
Mallard	
Pheasant	
Red winged	
Red winged	
Reed bunting	
Robin	
Rook	
Sky lark	
Song thrush	
Starling	
Swallow	
Swift	
White	

ANNUAL LIFE CYCLE OF A TURTLE DOVE

January	February	March	April
Winters in sub-Saharan Africa			

Over 2150 farms  
surveyed by 2149  
volunteers



Direct advice given to  
over 5,000 farmers



# RSPB Demonstration farm: 'Hope Farm'



# Nature of Farming Award



Partners:  
National Newspaper:  
The Telegraph

# Nature friendly farmers become advocates and provide more demonstration farms



Partners:  
Farmers, Statutory Agencies,  
Other Advisory organisations

# Spreading the word through media

## Food and Farming Awards

Home Previous Years About Judges Finalists The Food Programme More



### RSPB Nature of Farming Award for Henry Edmunds

#### More clips from Food and Farming Awards

- Food and Farming Awards update - 05 Nov 12  
DURATION: 04:32
- Food and Farming Awards update - 29 Oct 12



### Treshnish farm on Mull is among 4 finalists

Nature of Farming award winner chosen by public vote



## The Telegraph

HOME NEWS WORLD SPORT FINANCE COMMENT BLOGS CULTURE TRAVEL LI

Politics Obit Education Earth Science Defence Health Scotland Royal Celebrities

Weird Earth News Environment Climate Change Wildlife Outdoors Picture Galleries

HOME » EARTH » WILDLIFE

### RSPB calls for wildlife farming to bring back birds

The RSPB has called for "intensive wildlife farming" in the British countryside to bring back once common species like the tree sparrow, grey partridge and corn bunting.




Print this article  
Share  
Facebook  
Twitter  
Email  
LinkedIn

Wildlife News » UK News » Earth » Earth News » Environment »

IN WILDLIFE

By Louise Gray, Environment Correspondent  
7:00AM BST 16 Apr 2011

Follow 5754 followers



Members Login | Join Wild Scotland

### I am looking for...

Select Region  
Select Provider Type  
Specify  
Enter keywords...

Search Now

Us Link

Send to

Personal address Sign up

successful would be the first ever Scottish winner of the award.

Renowned wildlife cameraman, Gordon Buchanan, who grew up on Mull, is championing the cause of Treshnish Farm, and is calling on anyone in Scotland who hasn't yet voted, to do so asap, as word is that it is an extremely close run race, with only 13 votes between the two front runners at the last count.

Treshnish & Haun Co

### Farmers who live off the land

Two award-winning farmers have created thriving wildlife habitats on the Isle of Mull.



Image 1/12  
Over 100 years of farming has helped the land to become a wildlife haven.

By Louise Gray  
6:59PM BST 15 Sep 2011

Comments

The weather on the west coast of Mull changes every minute at this time of year, lighting up the sea shore where an otter splashes in the waves. The off logs open up onto meadows bursting with butterflies before rising to the heather-covered mountains. And there, in the distance, a sea eagle soars in long lazy circles.

Welcome to Treshnish, Britain's most environmentally friendly farm and winner of this year's £1,000 RSPB Nature of Farming Award.

In pictures: Five of the best essential kit for your holiday

Outdoor clothing: The best camp equipment

Seaside in a tent: A moving home, a moving home, a moving home


Country clothing: We look at the best clothing for your holiday

# Knowledge sharing through events



Partners:  
Seed suppliers, Agronomists  
and other farm advisers

# Online forums and advice for nature friendly farmers



**FarmWildlife**

create your environmental plan

Advice for farmers


- Helping species
- Managing habitats for wildlife
- Techniques to help wildlife
- Seasonal advice
- Find your local adviser
- Farmland bird conservation explained

hello: **Homer Simpson** | [logout](#)

search:

I am a:

I want:




giving nature a home

## Community

[RSPB HOME](#) [COMMUNITY HOME](#) [WILDLIFE](#) [PLACES TO VISIT](#) [GET INVOLVED](#) [OUR WORK](#) [CHAT](#) [ABOUT](#)

[Home](#) » [Our work](#) » [Farming](#)



### Farming

Welcome to this group for all farmers and anyone with an interest in farming. Read our blog to see how we're working with farmers and to find out where you can meet us at events.


[Join group](#)  
[RSS](#)

[Home](#) [Blog](#) [Forum](#) [Members](#) [Tags](#) [Mentions](#)

### Browse Blogs in Farming

Blog	Posts	Last Post
<b>Farming</b> Find out more about how we're working with farmers and others to provide space for farmland nature in the landscape. Join in the discussion on farming issues and share tips for wildlife-friendly farming.	389	28 Feb 2017

Sort by: [Most Recent](#) [Most Views](#) [Most Comments](#)



**Celebrating stone-curlew heroes: Dominic Ash, Defence Estates Ecologist**

### Popular

**A secure future?**  
over 3 years ago by Heather G

**Nature of Farming Award - A fine crop of highly commended farms for the Northern England Region**  
over 3 years ago by Heather G

**Nature of Farming Award - Northern England Regional Winner, Richard Bramley - giving farm wildlife a home**

EU LIFE+ Wildlife Friendly Farming Conference  
Brussels 28<sup>th</sup> November 2012-  
Audience: policy decision makers



Overall, the project conveyed a positive impression of the EU Birds Directive to:

- 120,000+ farmers
- 3,000,000+ public

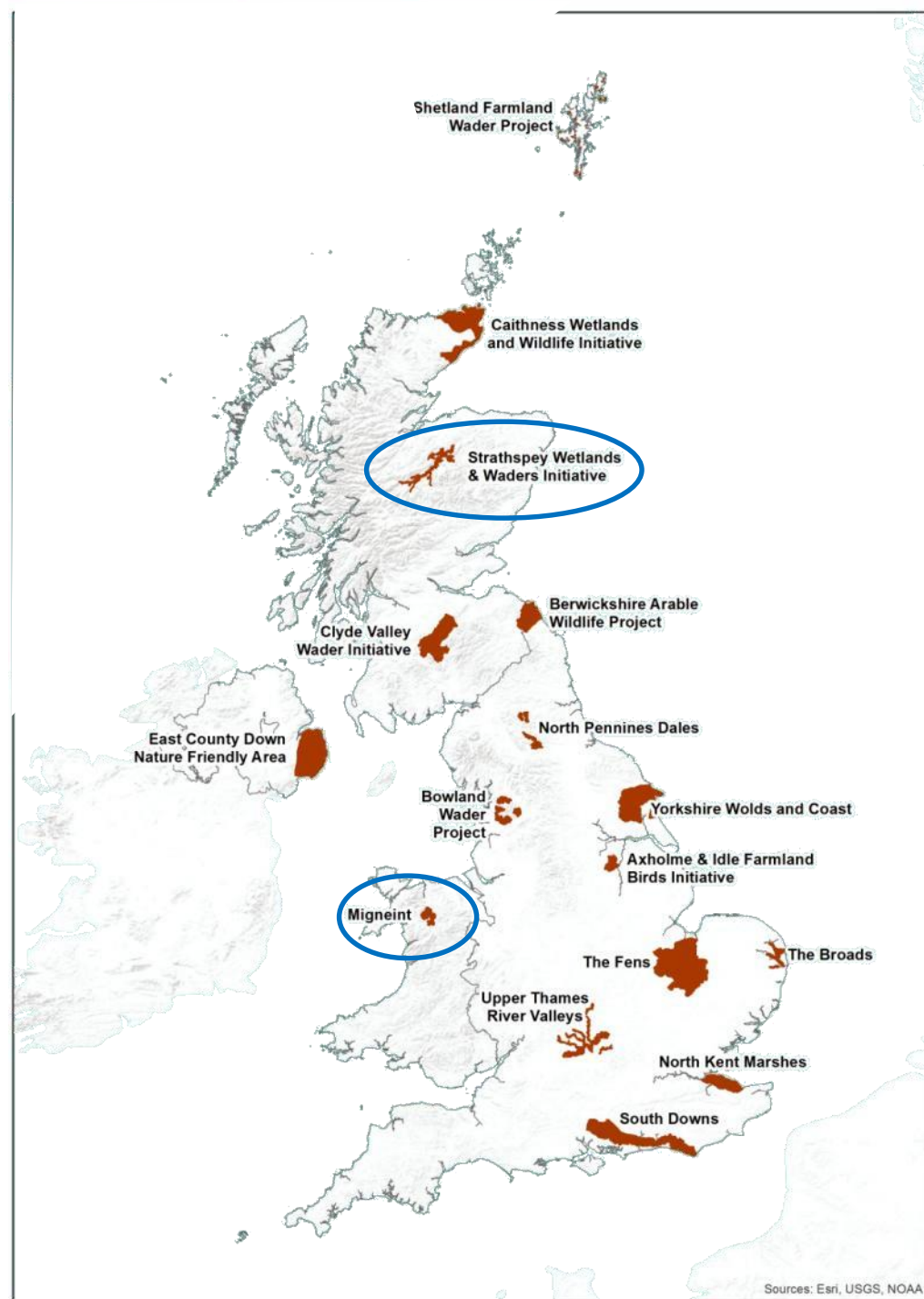
**But**, it was expensive and it was not intensive enough to recover farmland bird populations at a national scale....

So after the project we decided to target our work to demonstrate that nature friendly farming can be effective at a landscape scale.

# 16 Farm Advice Focus Areas

## Case studies:

1. Migneint Farm Advice Focus Area
2. Strathspey Wetlands and Waders Initiative (SWWI)



# 1. Migneint Farm Advice Focus Area (Mid Wales)

## Farm Advice Focus Area

Encouraging positive management for

- curlew
- golden plover
- ring ouzel

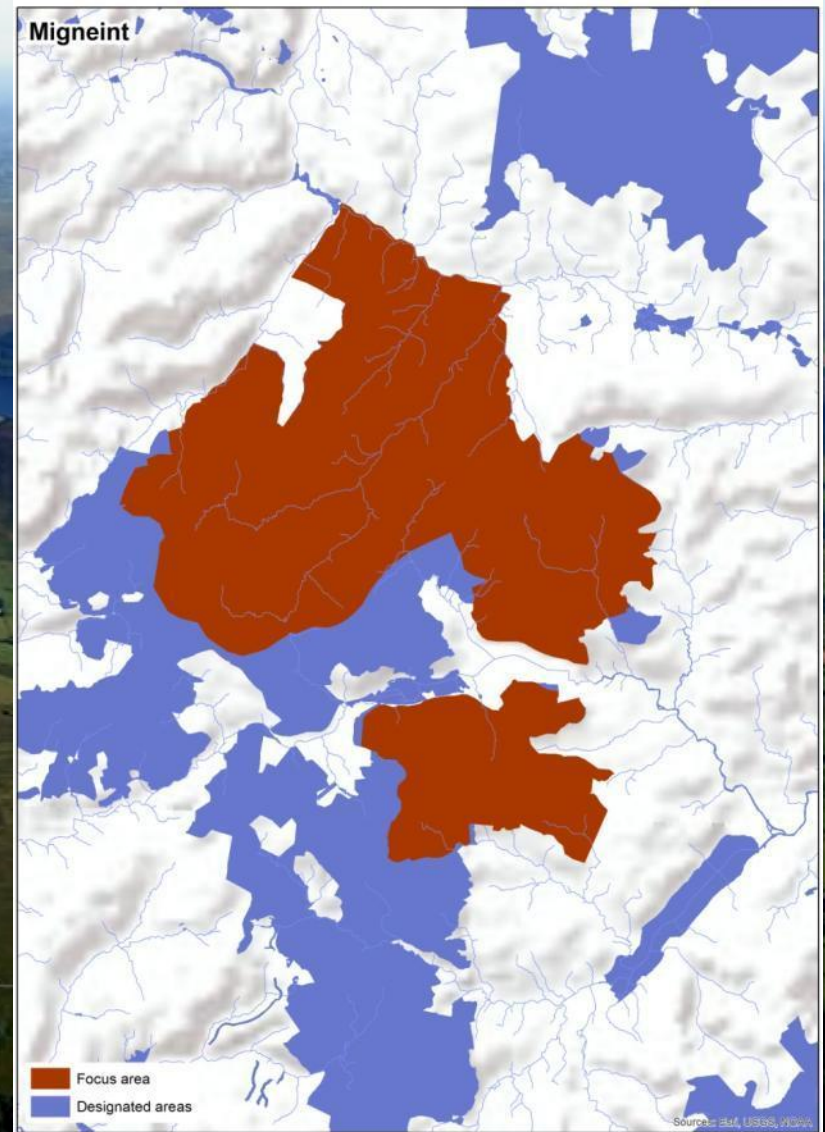
## Migneint Arenig Dduallt Natura 2000 site

### Special Protection Area (SPA)

- merlin
- hen harrier
- peregrine

### Special Area of Conservation (SAC)

- blanket bog
- wet heath
- dry heath
- woodland



# 1. Migneint Farm Advice Focus Area (Mid Wales)

Project Partner:

- The National Trust

Contributors:

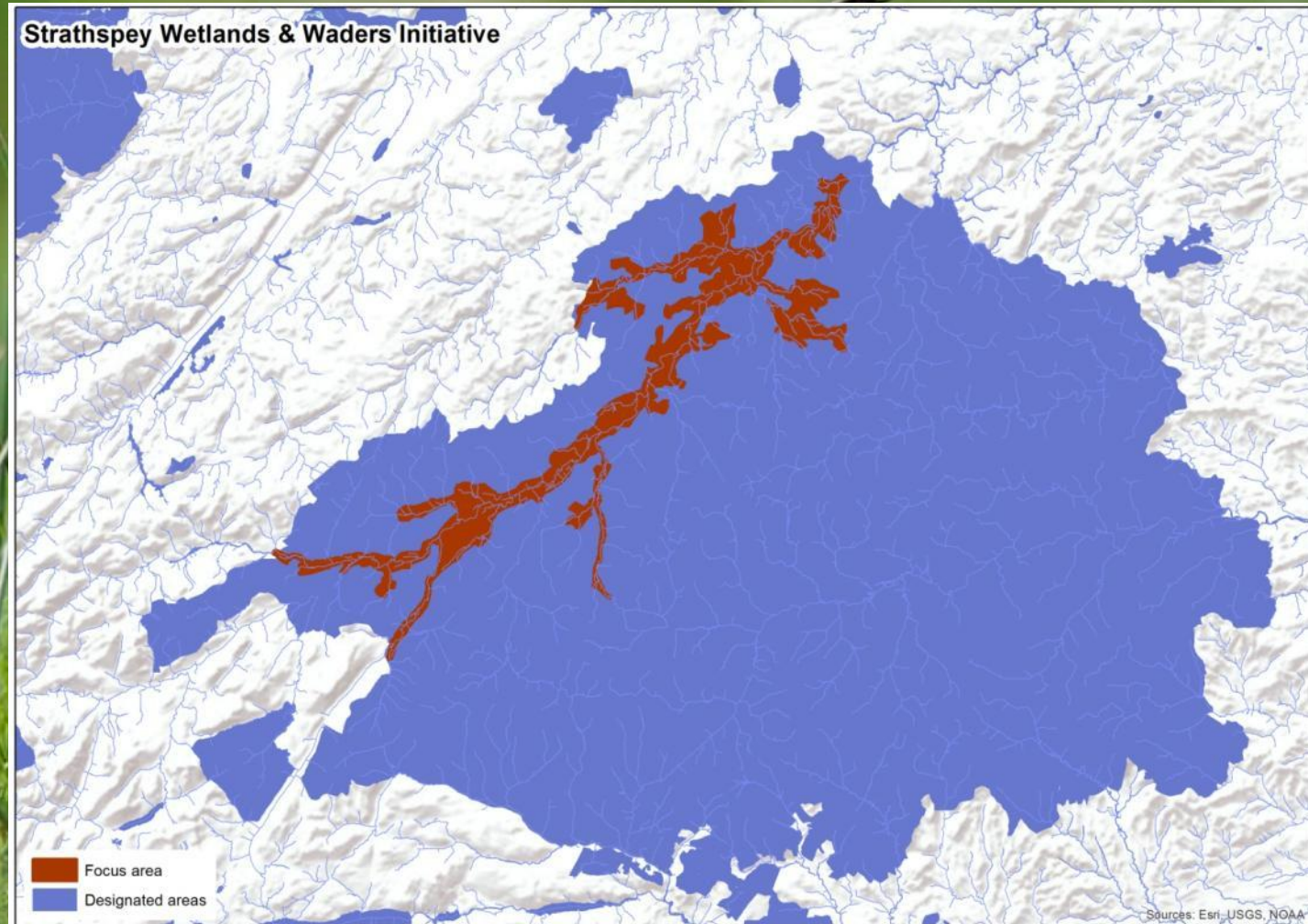
- Centre for Ecology & Hydrology
- Natural Resources Wales
- Snowdonia National Park Authority
- Fferm Ifan (A group of 11 National Trust Tenant farmers)

# 1. Migneint Farm Advice Focus Area (Mid Wales)

Extensive upland beef and sheep livestock system- maintaining this industry and creating habitat for golden plover and curlew

In conjunction with the National Trust we are currently carrying out assessments of each of the tenanted farms involved for priority habitats and species

## 2. Strathspey wetland and waders initiative



## 2. Strathspey wetland and waders initiative

highest density of  
breeding waders in  
mainland Britain

Work with farmers to  
maintain high quality  
wader habitat.,  
monitoring undertaken by  
volunteers

**43%↓**  
(2000-2010)



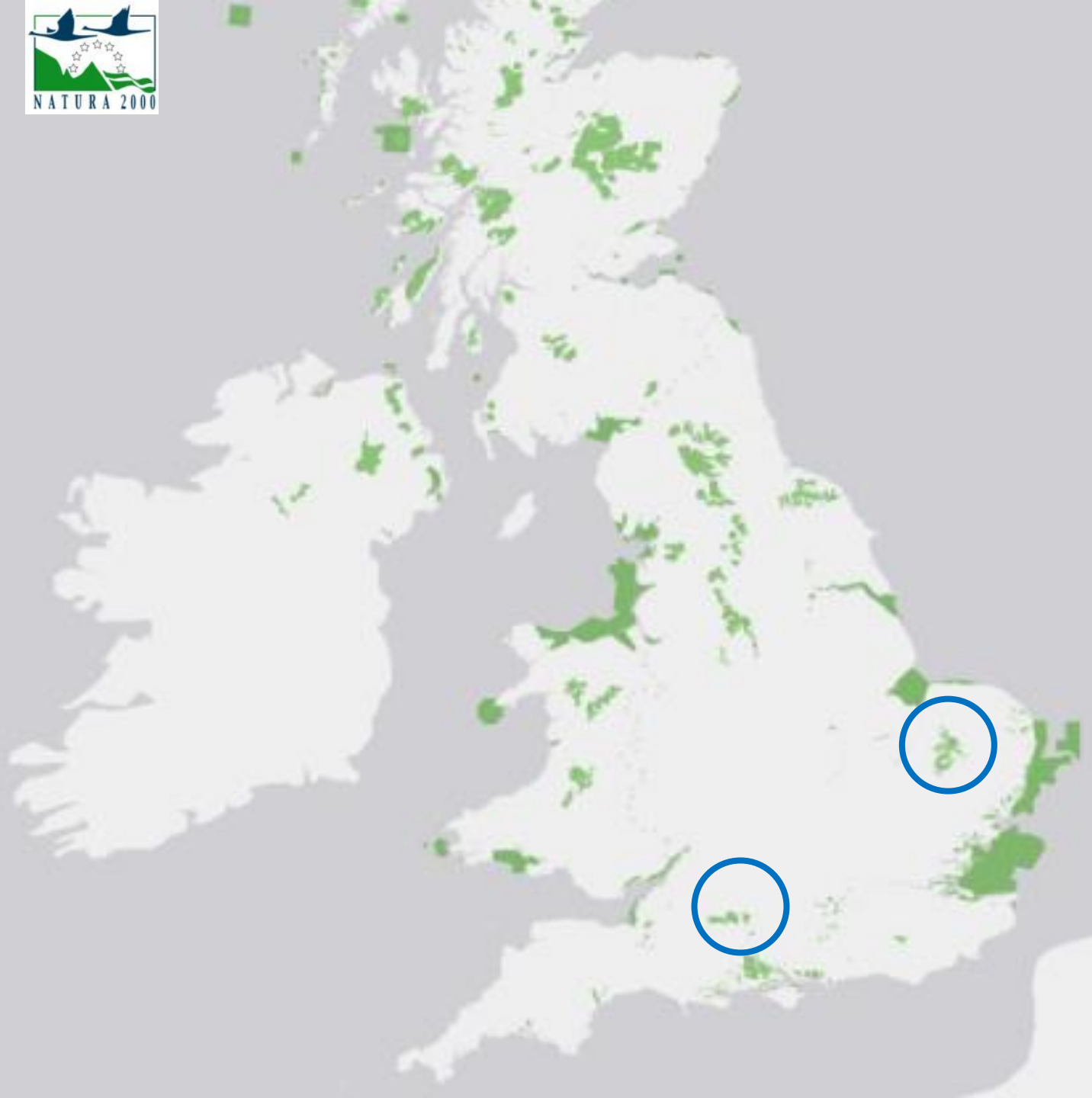


giving  
nature  
a home

**LIFE11/INF/UK/418**

“Securing the future of the Stone-curlew throughout its range in the UK”













# Recovery Action for stone-curlews

- Population monitoring
- Research
- Sites Conservation
- Reserves wardening & management (inc. land management agreements)
- Interventions
- Advisory on arable farms
- Advisory on semi-natural habitat
- Training Volunteers & Farmers
- Community Engagement
- Advocacy to decision makers e.g. Council
- Influencing Agricultural Policy inc. MELMS







CULTIVATOR  
WITH PRESS





