



Development of Great Bustard agro-environmental schemes in Hungary

Miklós Lóránt, nature conservation warden

Kiskunság National Park Directorate

Fertőújlak, Hungary – 2017.05.03.



The periods

- 2004-2009.
- 2009-2014.
- 2015. – No scheme!
- 2016-2020.
- LIFE OTISHU (2004-2008)
- No LIFE
- No LIFE
- LIFE Great Bustard (2016-2023)







Requirements of the GB schemes

Very simply: to increase breeding success.

- The specifications of the GB ESA program should adopt to the requirements of the species
- The GB ESA program should cover the distribution area of the Great Bustard
- The GB ESA program should be attractive to the farmers

Threatening factors	nr	Unsuccessful	Successful
Hay making/ mowing (alfalfa fields)	62	68%	32%
Hay making/ mowing (grasslands)	28	75%	25%
Chemical treatment of crops	40	44%	56%
Tillage	16	75%	25%
Harvesting	9	75%	25%
Grazing by livestock	9	57%	43%
Eggs left by females due to human disturbance (passersby)	9	83%	17%
Secondary tillage (with cultivators)	4	75%	25%
Eggs left by females due to human disturbance (cars)	2	100%	0%
Sowing	1	100%	0%
Silage making	1	100%	0%
Soil preparation	1	100%	0%

Mowing, hay making



Chemical treatment



Tillage



before



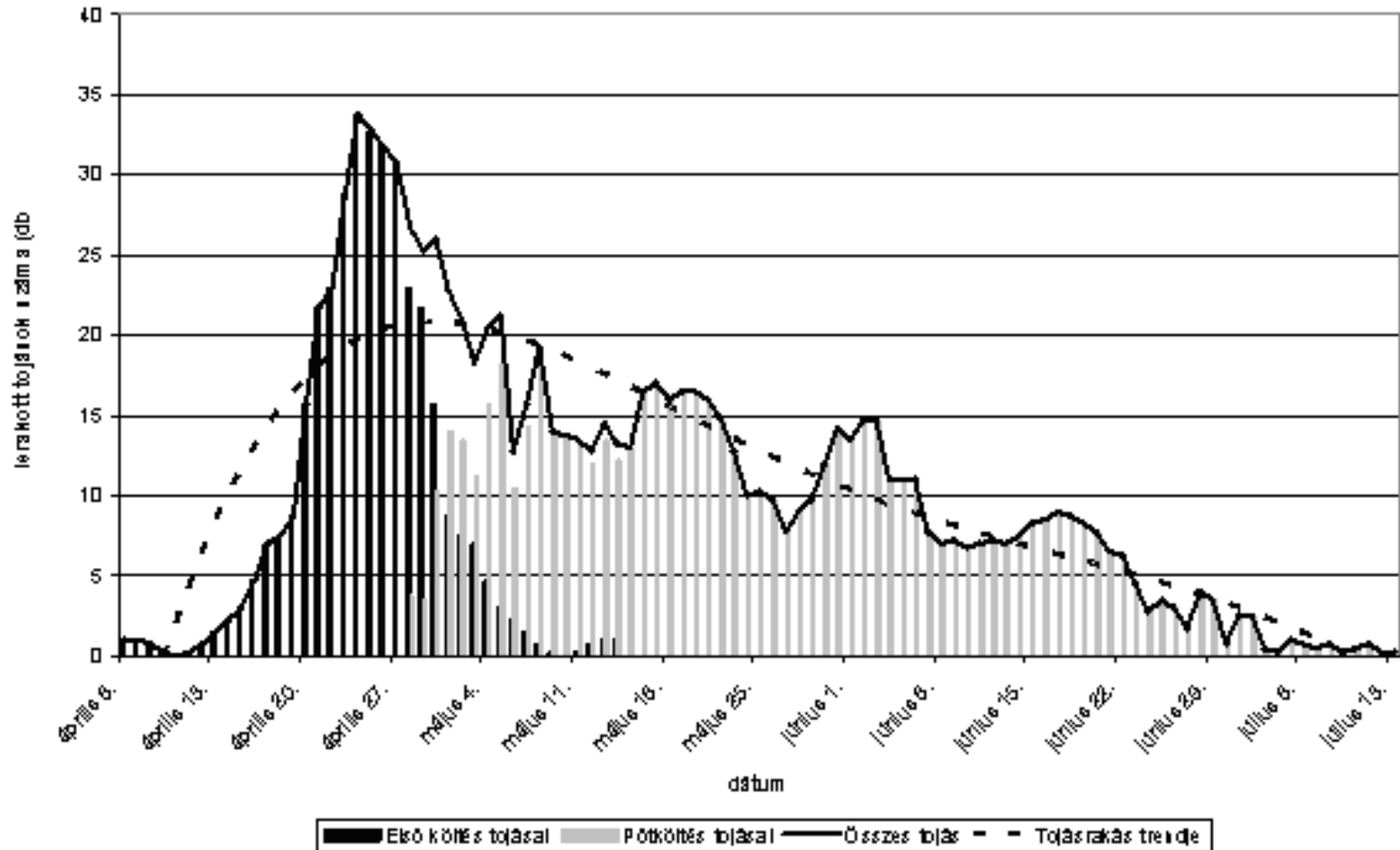
after



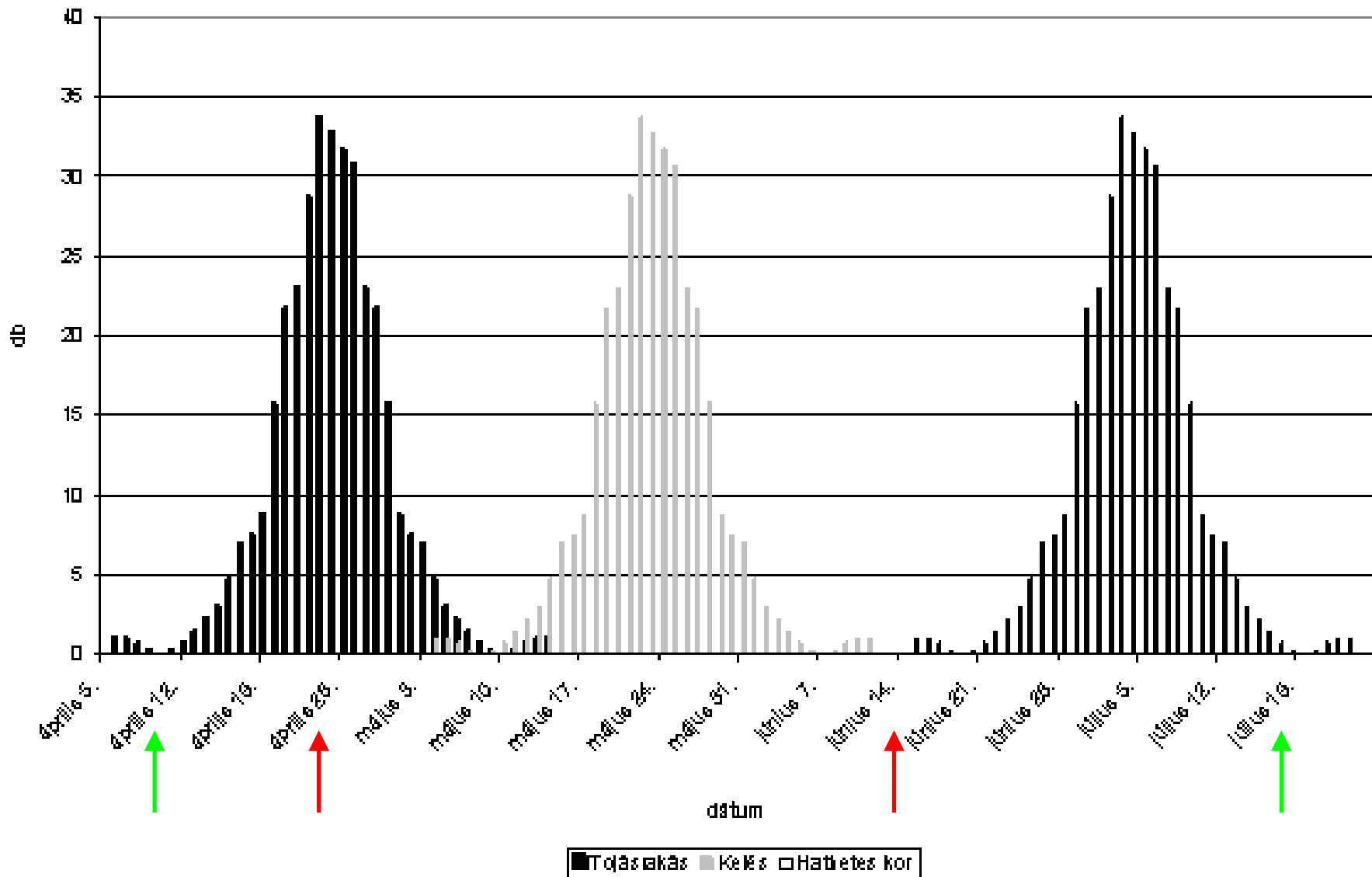
Period 2004-2009.

- 150/210014 (X.12.) FVM
- 3 schemes related to Great Bustard:
 - Management of arable lands
 - Management of alfalfa fields
 - Management of grasslands
- Key specifications:
 - Mowing **before 25th of April or after 15th of June**
(grassland from 1st of July in the Kiskunság!)
- Vegetation structure (20% cereal, 20% alfalfa, 20% fallowland, 10% oilseed rape, max 20% other) BUT
 - No regulation on chemical treatment, tillage, etc.

Laying of GB eggs in Hungary



The first broods in Hungary



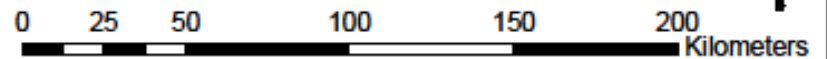
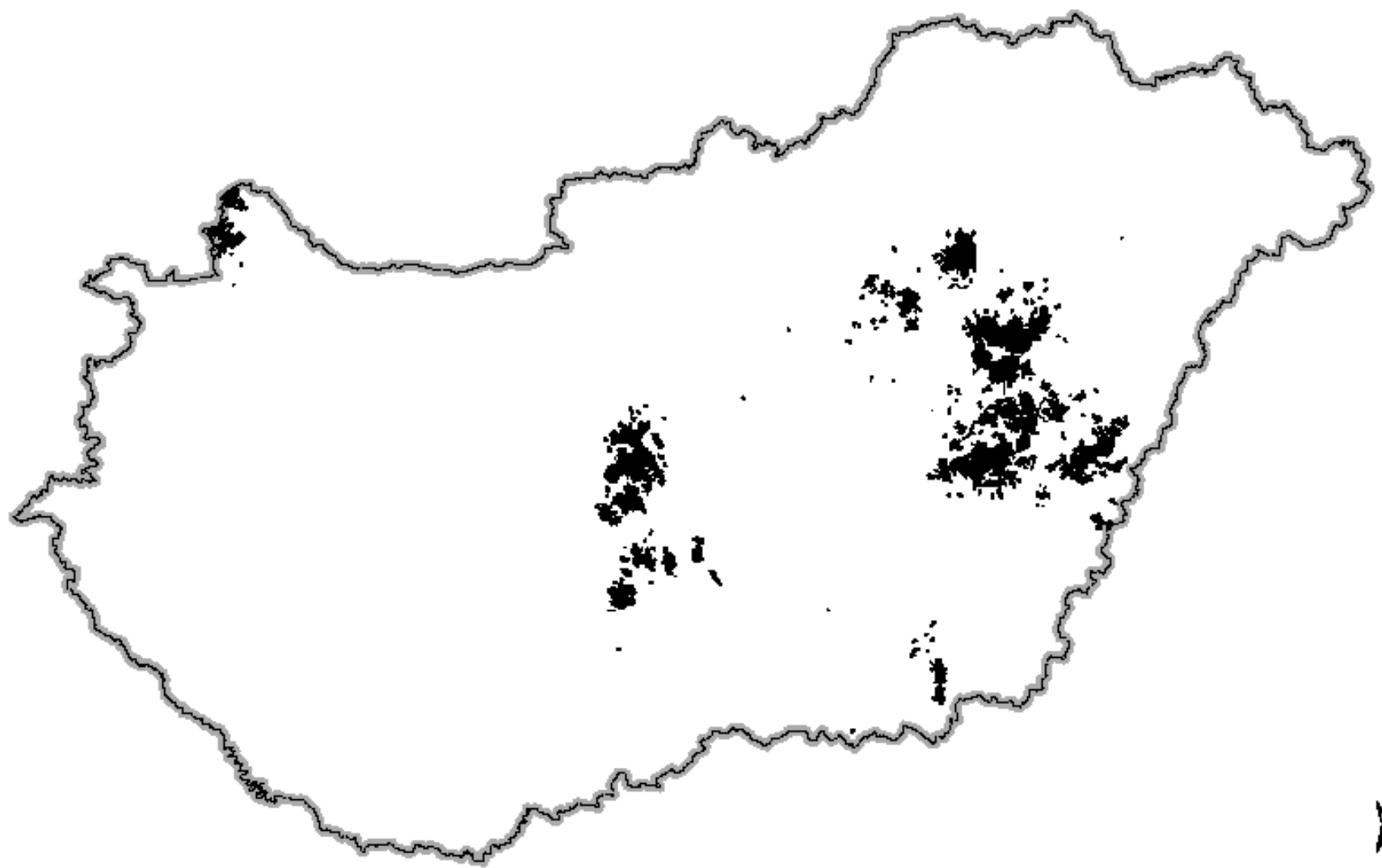


Scientific paper published

- **Mennyire tekinthetők hatékonyak az Agrár-Környezetgazdálkodási Program tűzokvédelmi célprogramjaiban szereplő előírások?**
 - Németh Ákos, Lóránt Miklós & Vadász Csaba Természetvédelmi Közlemények (2009), Vol. 15, p. 226-234

Period 2009-2014.

- 61/2009 (V.14.) FVM
- 2 schemes related to Great Bustard:
 - Management of arable lands
 - Management of grasslands
- Key specifications:
 - 50% mowing before 25th of April or after 30th of June, 50% after 15th of June
 - Mowing from 1st of July in the Kiskunság, and Hortobágy!
- Vegetation structure (20% cereal, 20% alfalfa, 20% fallowland, 10% oilseed rape, max 20% other) **BUT**
 - No regulation on chemical treatment, tillage, etc.

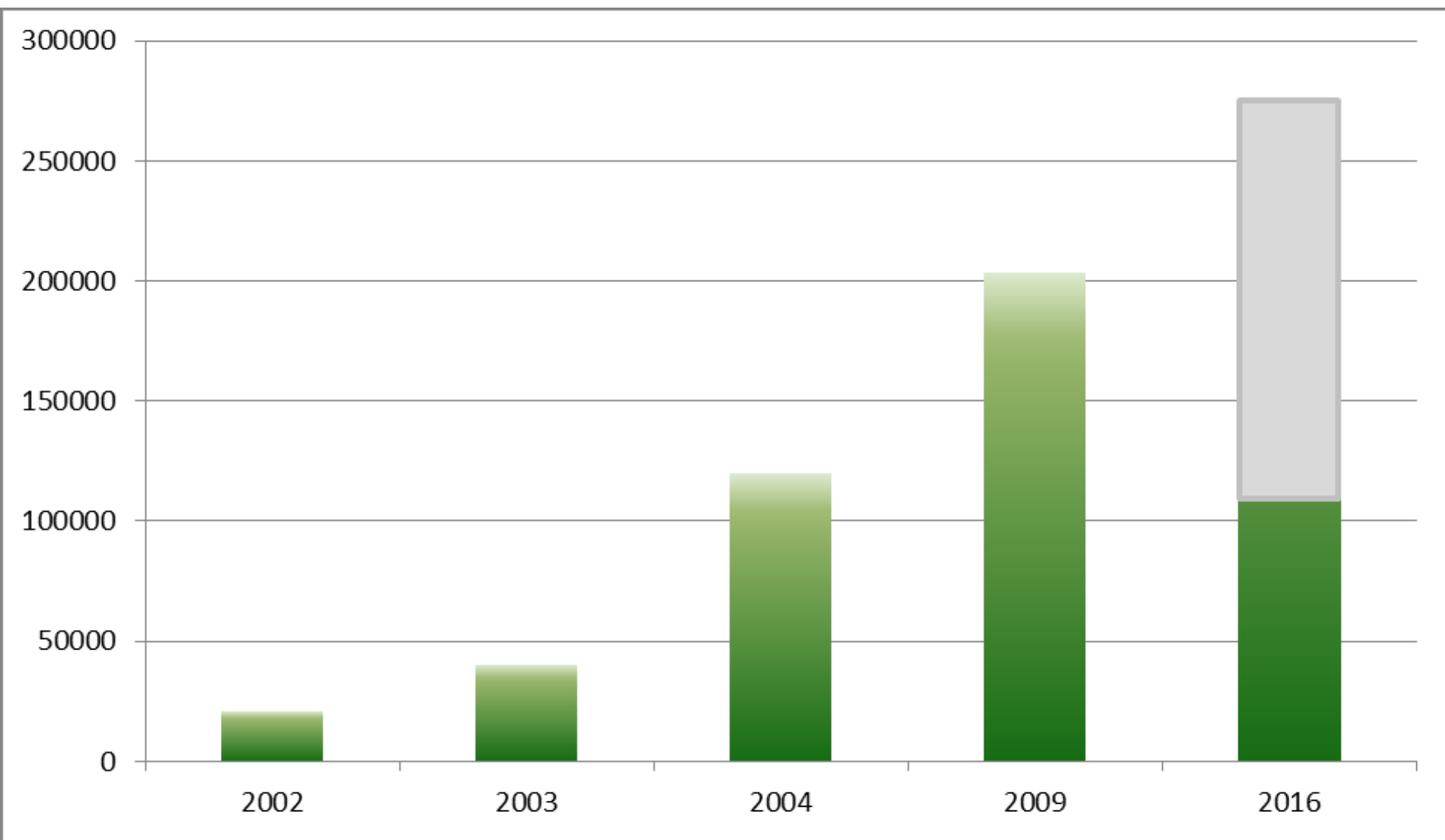


Scientific paper published

- **Mennyiben járultak hozzá a 2009–2014 között lezajlott agrár-környezetgazdálkodási program tűzokvédelmi zonális célprogramjainak előírásai a tűzok (*Otis tarda*) költési sikerét a fészkelési időszakban veszélyeztető tényezők mérsékléséhez?**
 - Vadász Csaba & Lóránt Miklós *Aquila* (2014), Vol. 121, p. 23–33

Period 2016-2020.

- 2 schemes related to Great Bustard:
 - Management of arable lands
 - Management of grasslands
- Key specifications:
 - Mowing from 1st of July (from 15th of June at Körös-Maros NPD)
 - Second level 15th of July (1st of July)
- Vegetation structure (20% cereal, 20% alfalfa, 20% fallowland, 10% oilseed rape, max 20% other) **AND**
 - Regulation on chemical treatment, tillage, etc. Between 15 of April and 1st/15th of July.



Requirements of the GB schemes

- The specifications of the GB ESA program should adopt to the requirements of the species
 - **We know, what the GBs need (2009)**
- The GB ESA program should cover the distribution area of the Great Bustard
 - **We know, where the GBs live (2014)**
- The GB ESA program should be attractive to the farmers
 - **Must be analyzed till 2020...**



LIFE GREAT BUSTARD