



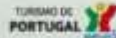
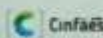
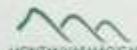
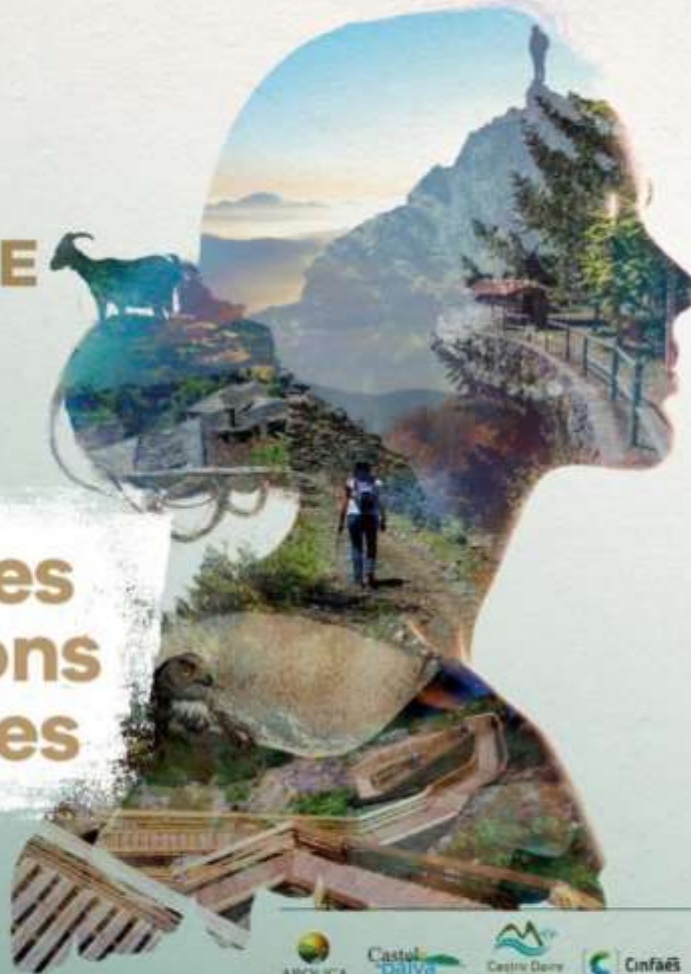
EUROPARC CONFERENCE

06 — 10
Sep 2017
Portugal

Montanhas
Mágicas®

**New Voices
New Visions
New Values**

*for People
and Nature
in Europe*





“Prescription of fire in nature conservation areas. Some practical cases in Portugal and Italy”

Carlos Loureiro - GIFF

**New Voices
New Visions
New Values**

*for People
and Nature
in Europe*



ADRMAG



GIFF - Gestão Integrada e Fomento Florestal, Lda (Integrated Management and Forest Development)

- **A private company - since 2008**
- **Work in:**
 - **forest fire management**
 - **prescribed fire**
 - **wildfire analyses**
- **Research & Development – prescribed fire, fuel management planning**

FIRE MANAGEMENT PLANNING IN CONSERVATION AREAS

Case 1 – Management of landscape and natural pastures

Case 2 – Habitat management

Case 3 – Wildfire hazard management/protection of conservation areas

Case 1 – Management of landscape and natural pastures

Montesinho Natural Park

Serra da Estrela Natural Park

Malcata Natural Park

Cilento e Vallo di Diano National Park – South Italy









Case 1 – Management of landscape and natural pastures

Cilento e Vallo di Diano National Park - Italy



Prescribed burning in *Spartium junceum* shrublands



Burning planning made with forest service and the shepherd.

Case 2 – Habitat management

Montesinho Natural Park

- *Erica and Pterospartum tridentatum shrublands*

Serra da Estrela Natural Park

- *Control of invasion by Calluna vulgaris of 'cervurnais' (Nardus stricta)*

Malcata Natural Park

- *Management of the rabbit habitat / favoring lynx population*

Cilento e Vallo di Diano National Park. Italy

- *Habitat conservation in Spartium junceum shrublands*
- *Habitat management in Quercus cerris forest – experimental PB*

Erica and Pterospartum tridentatum shrublands



Use of Prescribed Burning for *Nardus* habitat management



Use of Prescribed Burning for shrub management



Experimental Prescribed Burning in *Quercus cerris* forest



Case 3 – Wildfire hazard management / protection of conservation areas

Montesinho Natural Park - *shrublands*

Vale do Tua Regional Natural Park - *shrublands*

Serra da Estrela Natural Park - *shrublands and pine forest*

Malcata Natural Park – *shrublands and pine forest*

Serra de S. Mamede Natural Park – *pine forest*

Cilento e Vallo di Diano National Park. Italy – *shrubland and herbaceous*

Vezuvio National Park . Italy – *pine forest*

Use of Prescribed Burning for fuel management in wildfire prevention network



Prescribed Fire for fuel management in pine forest



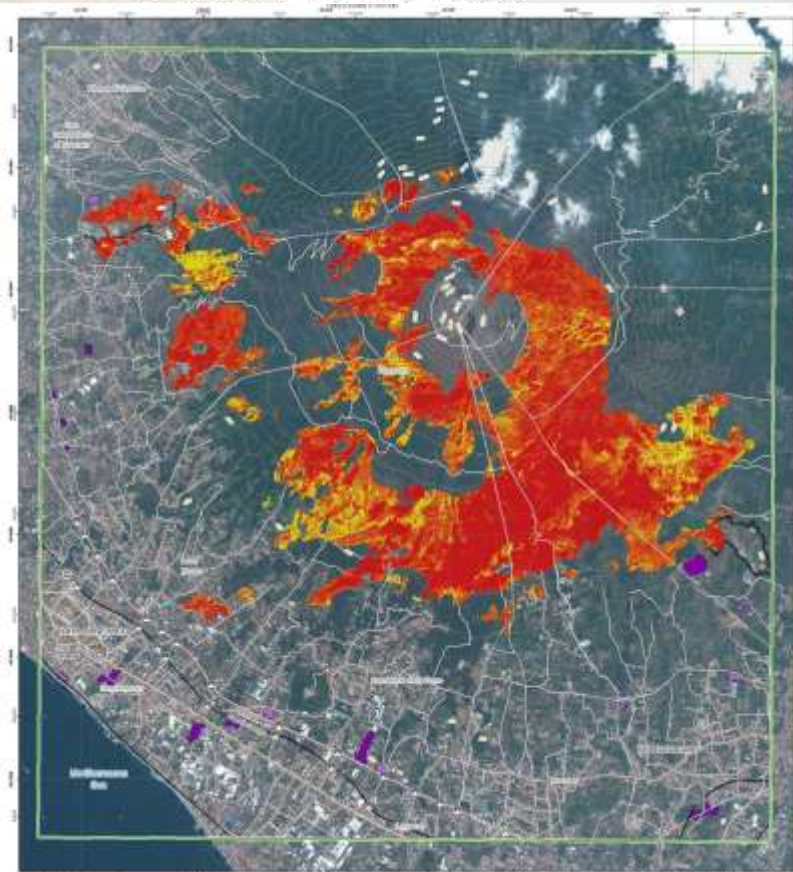
Prescribed Burning for fuel management - *Ampelodesmos mauritanicus*



Prescribed Burning in Vesuvio National Park. Italy



Vesuvio wildfire – july 2017



Burns made in public lands between 2009 and 2011 were done in the frame of the GAUF contract with the Instituto de Conservação da Natureza e Florestas (Portuguese Nature and Forest Services).

Burns made by GIFF in Cilento e Vallo di Diano National Park and in Vesuvio National Park – Italy, were performed in the frame of several research projects and PB training programs developed by Second University of Naples, University of Naples Federico II and University of Torino (Assunta Esposito, Stefano Mazzoleni and Davide Ascoli) in partnership with GIFF.

Planning fire management in National and Natural Parks

A long term issue...

An integrated approach...

The prescribed burn size paradigm...

- Relationship between burned area and cost efficiency - adjusted to wildfire prevention objectives
- Localized small size application, higher costs - mosaic burns for conservation purposes

Questions for discussion

- What can be done to rebalance fire in the ecosystems?
- The adoption of the new paradigm, "Integrated Fire Management" is desirable in Protected Areas?
- Using fire as a management tool in Protected Areas with private land.

Who decide and who pay?

- Good fire, Bad Fire. Who decides?



EUROPARC CONFERENCE

06 — 10
Sep 2017
Portugal

Montanhas
Mágicas®

**New Voices
New Visions
New Values**

*for People
and Nature
in Europe*

