



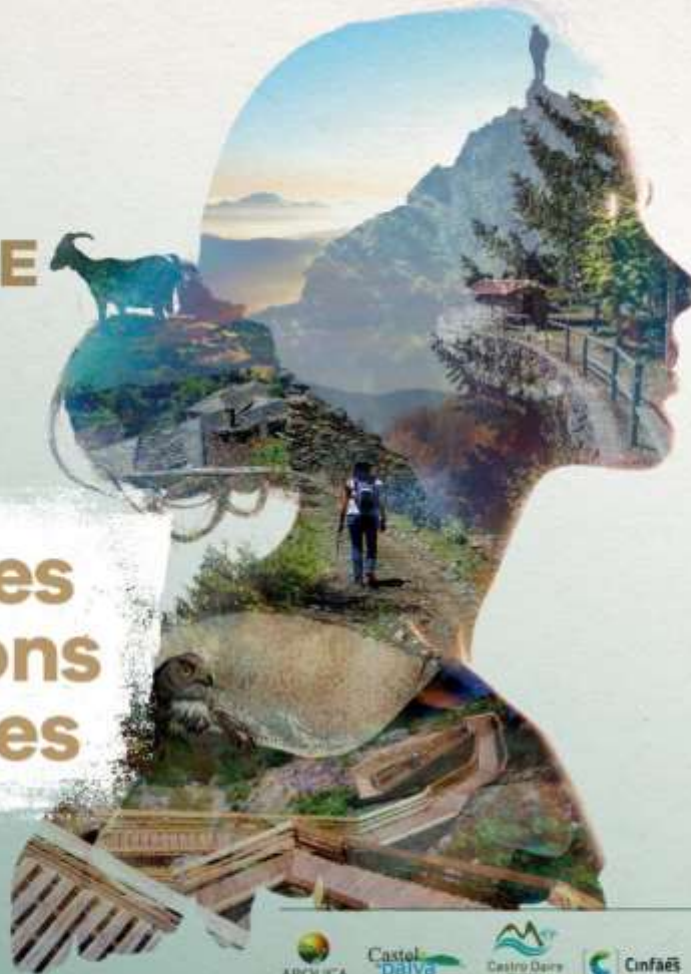
# EUROPARC CONFERENCE

06 — 10  
Sep 2017  
Portugal

Montanhas  
Mágicas®

**New Voices  
New Visions  
New Values**

*for People  
and Nature  
in Europe*



ADIRIMAG



MONTANHAS MÁGICAS



Castelo  
da Paiva



Cinfães



TURISMO DE  
PORTUGAL



porto norte

COMPETE  
2020

2020





# The Wicklow Uplands Council

## Tom Byrne-Vice Chairman

**New Voices  
New Visions  
New Values**

*for People  
and Nature  
in Europe*



## Wicklow uplands overview

- Born out of conflict
- Right of way
- High court – Walker vs Enniskerry walking group
- Mantra

***“To represent the people who **live, work and recreate** in the uplands”***



- *Est. in late 1970's –no funding*
- *Ltd by gaurantee, registered charity, registered lobby group*
- *Funding*
  - *Local authory*
  - *Heritage council (Government)*
  - *Private Benefactors*

# WUC-Structure

## Annual General Meeting

Farmers & Prop Owners



**Sean Byrne**  
*Chairman*



**Tom Byrne**  
*Vice-Chairman*

Env & Rec



Executive committee

**Brain Dunne**  
*Co-ordinator (full time employ)*

Community



Economic & Tourism



**Carmel Kealy**  
*Secretary*



**Jim Sheehan**  
*Treasurer*

Co Options





## WUC-Projects

### ***Past***

- *Vegetation Management*
- *PURE project*
- *Village Interpretative Panels*
- *Outdoor Recreation*
- *Rural security initiative*
- *Winter Weather*

### ***Present***

- *PATS accessibility*
- *Deer Management*
- *Targeted output scheme*



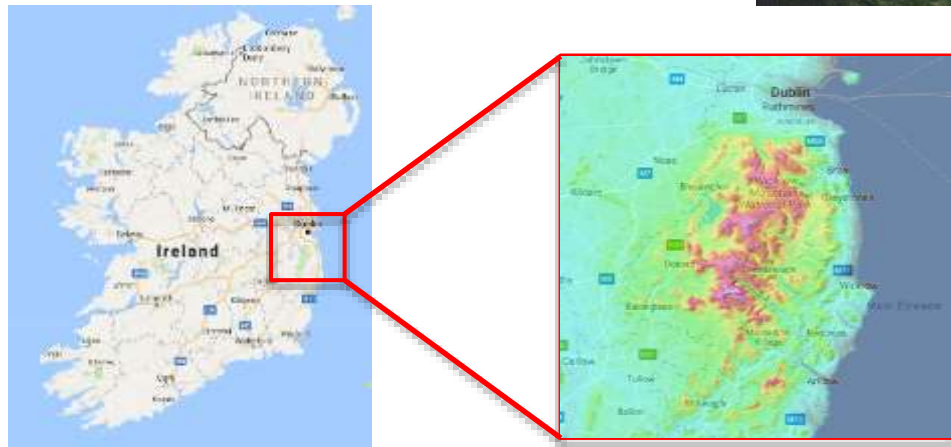
## Targeted output scheme

- Improve diversity in the uplands
- €3 million funding over 5 years
- Incentivise farmers to improve the habitat
- Generation of ideas
  - Blocking water courses
  - Managing heather
  - Increase shepherding
  - Introduction of native bee hives
  - Area grazing



## National park

- Spine of Wicklow
- 22500 ha (1/3 of Wicklow)
- Cat 2 National park (state owned)
- NPWS
- ~ 1 million visitors per year





## National park





## Conclusions

- The WUC is a small organisation
- Multiple projects – limited budget
- Great achievements
- Replicated in Europe





# EUROPARC CONFERENCE

06 — 10  
Sep 2017  
Portugal

Montanhas  
Mágicas®

**New Voices  
New Visions  
New Values**

*for People  
and Nature  
in Europe*

