



Europarc Webinar

November 20th 2017

**CULTURAL AND SOCIO-ECONOMIC BENEFITS
FOR CROSS-BORDER COMMUNITIES, INVOLVING PRIVATE AND PUBLIC STAKEHOLDERS
IN COMMON PROJECTS**

Dutch-German cross border nature park Maas-Swalm-Nette



Silke Weich

**Godsweerderstraat 2
NL-6041 GH Roermond
Netherlands**

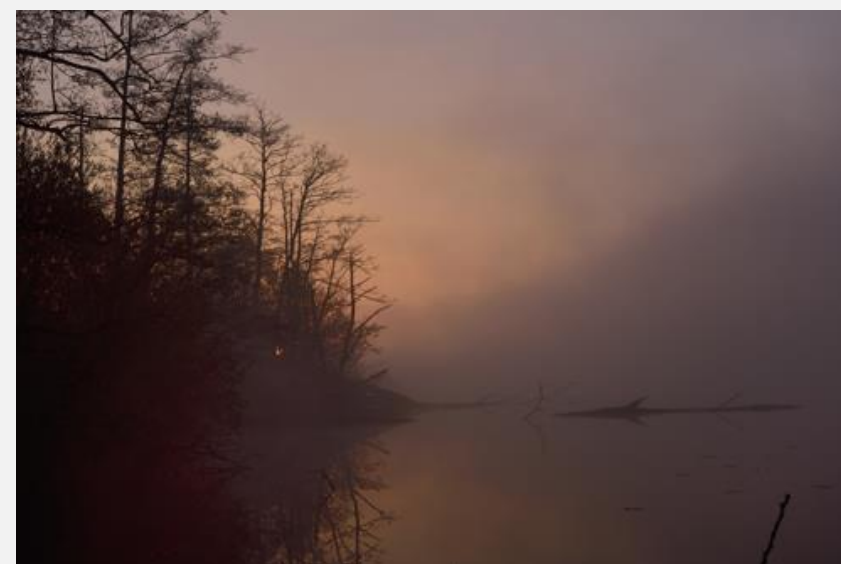
www.grenspark-msn.nl

www.naturpark-msn.de



Contents

- **Getting acquainted**
- **Organisation of the cooperation**
- **Tasks and goals**
- **Cross border projects**









The cross border park is an association formed by the German association nature park Schwalm-Nette and 7 Dutch communities in the Province of Limburg

Size: 1200 km²



2007

First certified as transboundary park following nature's design

2012 / 2017

recerfication

- part of TransParcNet
- common experience
- exchange of best practices
- exchange of data
- workshops, conferences





Characteristics

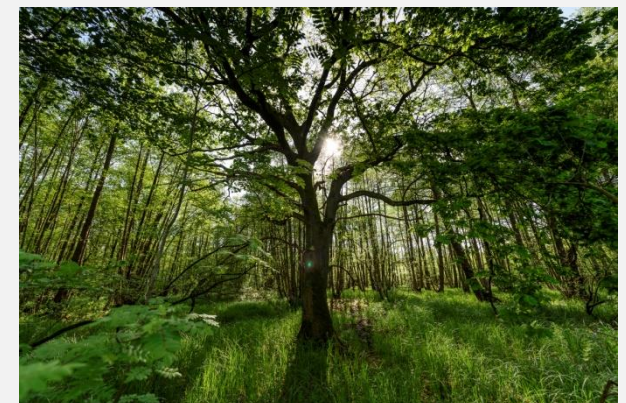
- rivers, forests, lakes, heath land, moors and agricultural landscapes
- 10.000 ha connected forest (FFH and Bird Directive, NATURA -2000) and national park De Meinweg in the Netherlands (2000 ha)
- water plays a significant role for tourism as well as for nature conservation
- within a radius of 100 km a visitor potential of more than 7 million people
- places with historical buildings and sites





History

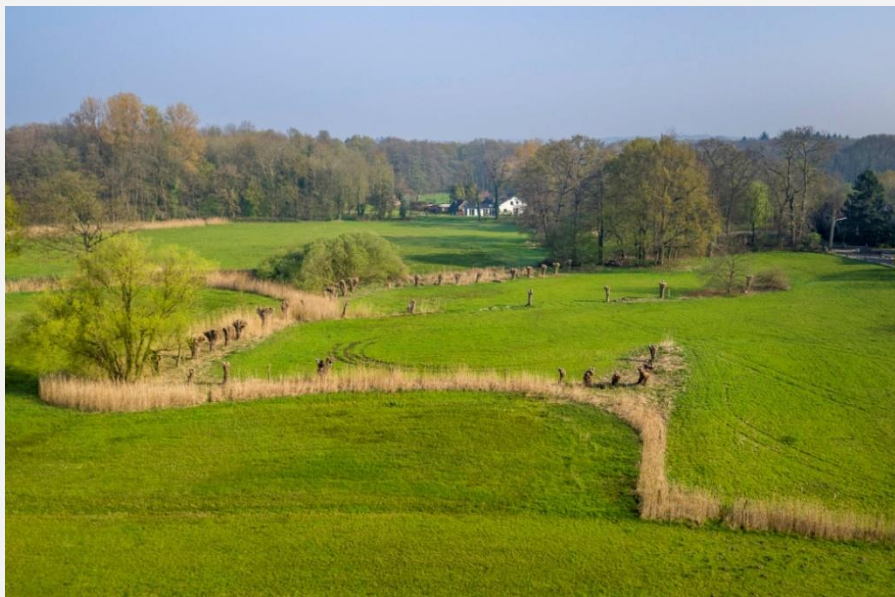
- 1965 **Foundation** of the German nature park Schwalm-Nette as an association by statutory regulations by four German districts (representing 17 German communities)
- 1976 **Enlargement** of the German nature park to the Dutch-German cross border nature park Maas-Swalm-Nette on behalf of a treaty between the Kingdom of the Netherlands and the federal state of Northrhine-Westfalia (management by an advisory board)
- 2002 **Foundation** of the cross border association Dutch-German cross border nature park Maas-Swalm-Nette





Administration

- **statutory regulations** → cooperation - policies - aims
- **board of directors** → 2 German / 2 Dutch
- **general board** → 7 German / 7 Dutch participants
→ 4 advisory members (NL/D)
- **Office (Dutch side)** → trans national
bilingual staff ; director (NL), project manager (D)





Goals and aims of the cross border cooperation

- nature and landscape → maintenance, development, connection
- recreation and tourism → support, development
- environmental education
- projects → planning, organisation, coordination
- stakeholders identification → PR, communication



→ communities – nature NGO's – inhabitants –
water boards – tourists – authorities – forestry
administration – tourist organisations





Finances

The basic budget for office → **220.000 €** per year

- 25 % Federal State of North Rhine-Westphalia
- 25 % Province of Limburg,
- 12,5 % German Nature park Schwalm-Nette
- 12,5 % 7 Dutch communities
- 25 % Funds through project management



Cross border project acquisition

2002-2008	4 projects	2.255.000,00 €
2009-2013	6 projects	5.530.000,00 €
2013-2017	3 projects	5.140.010,00 €
		12.925.010,00 €





Nature conservation





Recreation facilities





People in action



Excursions



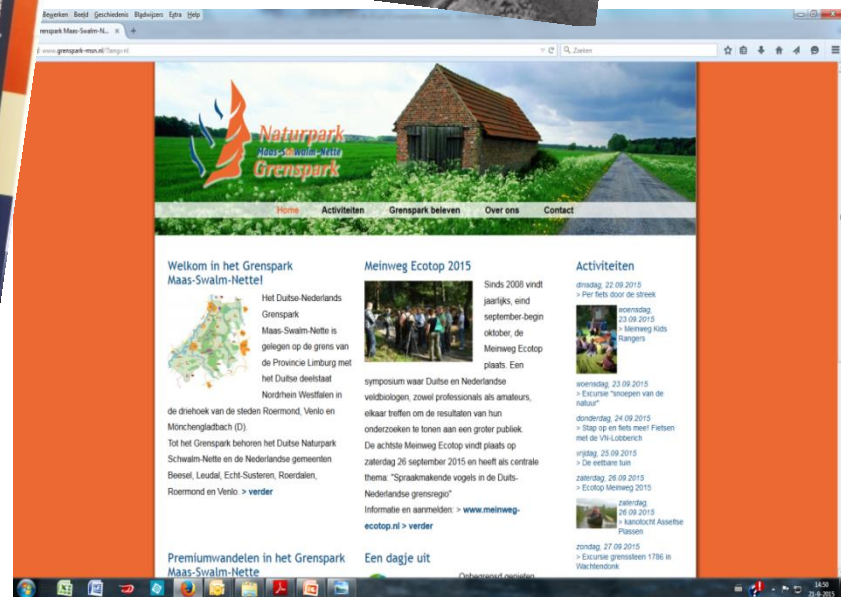


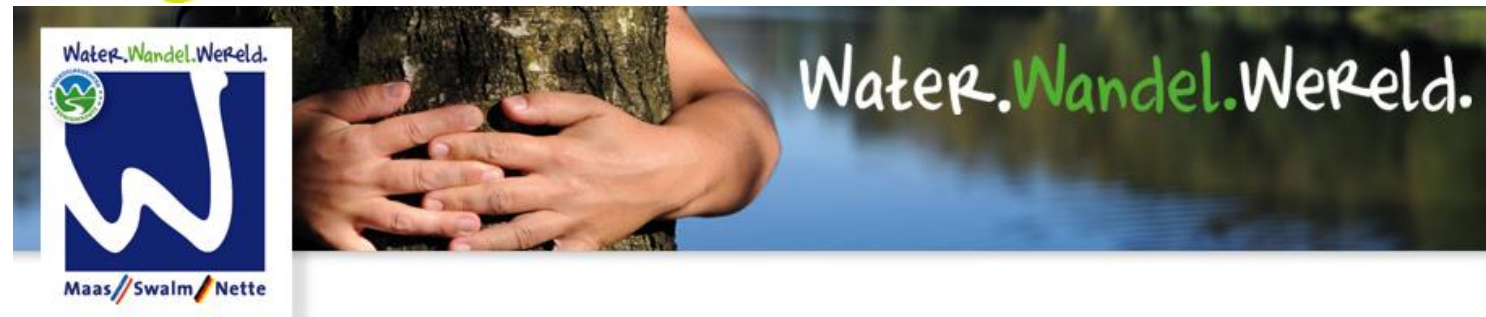
Workshops and trainings





PR & Communication





Natuurbelevenis maal negen.

Om het even of u het typische landschap van de Neder-Rijn nog niet kent of uw hart er al aan verpand hebt: wie iets bijzonders in deze regio wil beleven heeft nu de keus uit negen wandelroutes, die met een unieke en afwisselende flora en fauna in elk jaargetijde fascineren. Een voortdurende afwisseling van water, grasland, bos- en heidelandschap en een zeldzame dieren- en plantenwereld.

Door langdurig natuurbeheer zijn in het Grenspark Maas-Swalm-Nette waardevolle natte biotopen ontstaan die de wandelaar steeds weer opnieuw betoveren. Vanaf de eerste tot de negende route.



Water.Hiking.World

9 certified hiking trails on both sides of the border

Costs: 435.000,00 €

Stakeholders: gastronomes, hotels, other touristic facilities

Benefit example:

Stakeholders report

→ increase of up to 30 % more visitors

→ increase of visitors from across the border



- Home >
- Informatie >
- Routes >
- Routescouts >
- Partners >
- Film >
- Contact >



INTERREG V-A
Natuurbrandpreventie
Naturbrandprävention



Projectpartners / Projektpartner
Beesel - Bergen - Brüggen - Geldern - Gennep - Goch - Kevelaer - Mook en Middelaar
Nettetal - Niederkrüchten - Roerdalen - Roermond - Straelen - Venlo - Wegberg - Wassenberg
Biologische Station Krickenbecker Seen - Bosgroep Zuid Nederland - D-NL Naturpark/Grenspark
Maas-S(ch)walm-Nette - NABU Naturschutzstation Haus Wildenrath - Nordrhein-Westfalen-Stiftung
Naturschutz, Heimat- und Kulturpflege - Regionalforstamt Niederrhein, Landesbetrieb Wald und Holz
Staatsbosbeheer Limburg - Stichting Het Limburgs Landschap - Veiligheidsregio Limburg-Noord

Nature- en forest fire prevention

- Trainings of firefighters and nature NGO's
- measures for fire prevention

Costs: 900.000,00 €

Stakeholders:
firefighters
nature NGO's
communities

Benefit example:

Construction of wells at the border
for extra water facilities

costs: 150.000,00 €

Reconstruction water retention basins

Costs: 50.000,00 €

→cross border profit

→more safety



Cultural history

- physical improvement of historical sites
- implementation of nature theatre
- development of application for mobile devices for multi digital experience of 350 POIs

Costs: 2.640.000,00 €

Stakeholders:

communities

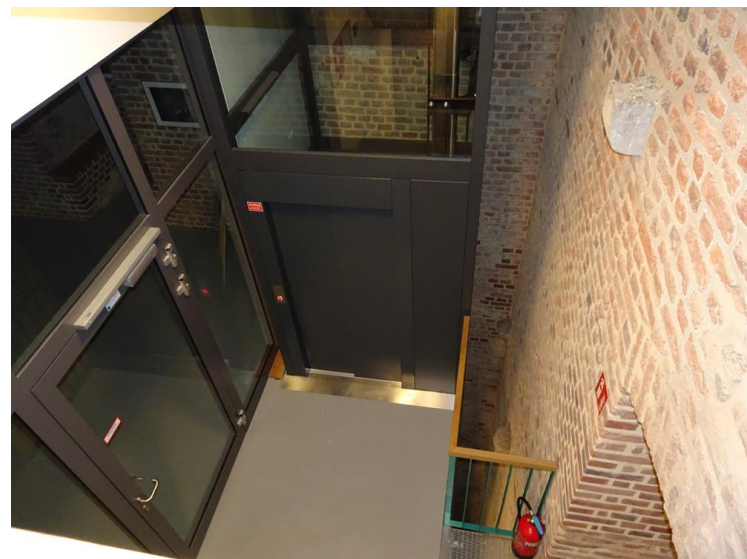
Museums / historical associations

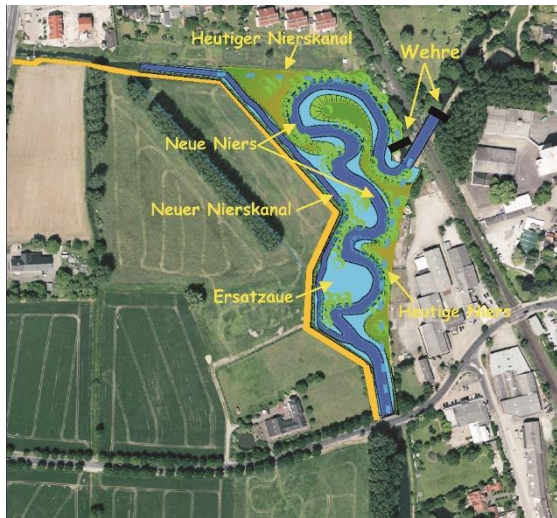
touristorganisations

Benefit example:

construction of elevator for physically handicapped people on top of a castle on a hill in the town of Wassenberg

Costs: 180.000,00 €





Nagrewa Nature Border Waters

- measures along rivers en streams, increase water quality and biodiversity

Costs: 4.200.000,00 €

Stakeholders:

waterbords
communities
private nature NGO's



Benefit examples:

River renaturations	1.000.000,00 €
Fishpasses	100.000,00 €
Water monitoring stations on border	25.000,00 €



Cross border cooperation

- bilinguality → big advantage
- mutual understanding → awareness of cross border socio-cultural commonalities and differences
- stronger than the challenges → flexibility, patience and the will to learn from each
- working cross border → makes you meet new friends, opens your mind

Thanks for your attention!

