

Experience with the mire restoration in Jizerské hory Mountains

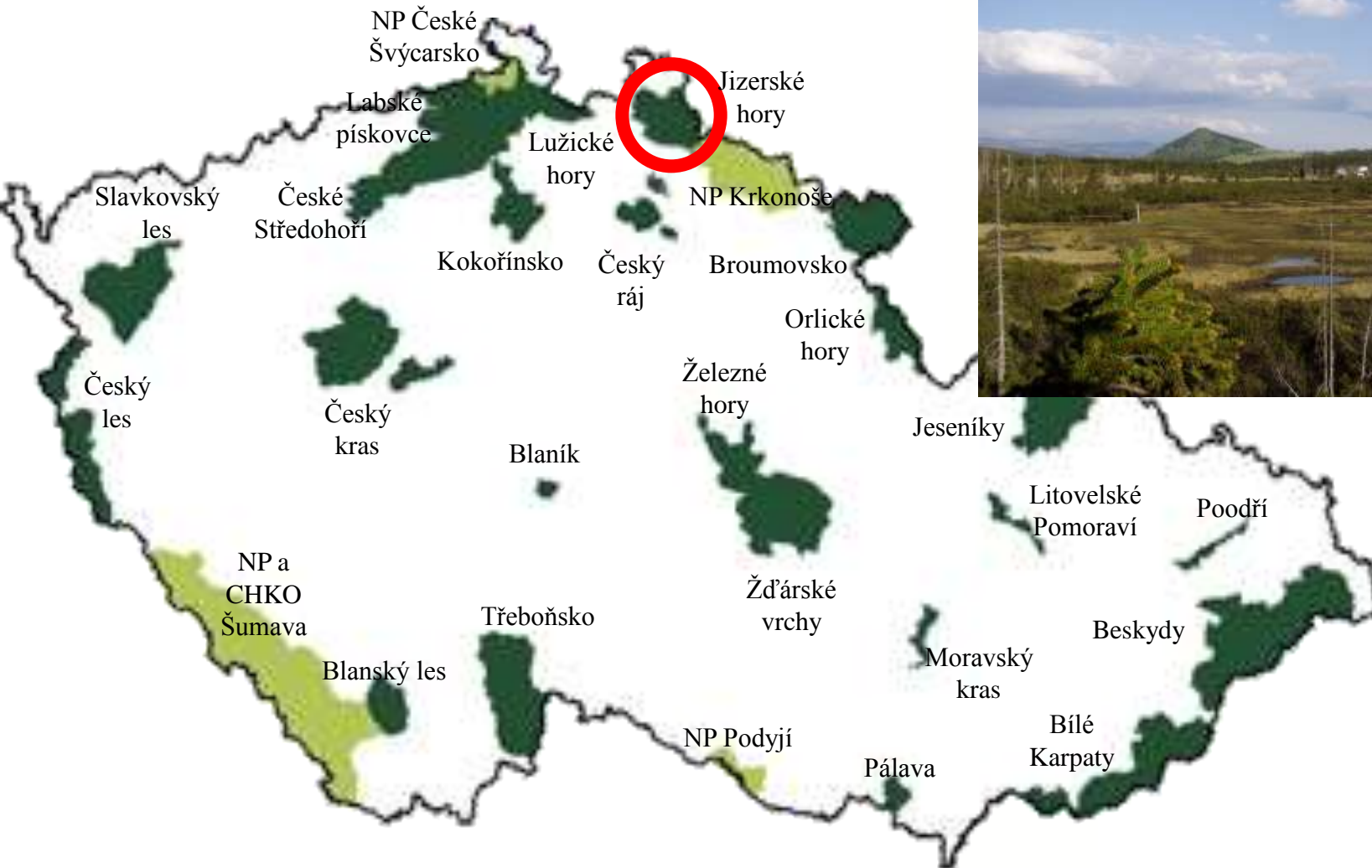
Václav Šrédl

Administration of Jizerské hory PLA

Kvilda, 8.11. 2017



Location



Plateau of Jizerské hory Mts.







NATURA 2000



mire coverage of PLA Jizerské hory Mts. **cca 3%** (9 km²) - all SAC



- mire drainage during 19th century
(forest management)



- present responsible administrator and owner - **Forests of the Czech Republic**
- Administration of PLA Jizerské hory Mts. - **Nature Conservation Agency of the Czech Republic**





→ money ?



→ measuring

→ project documentation

→ realization

→ cooperation !

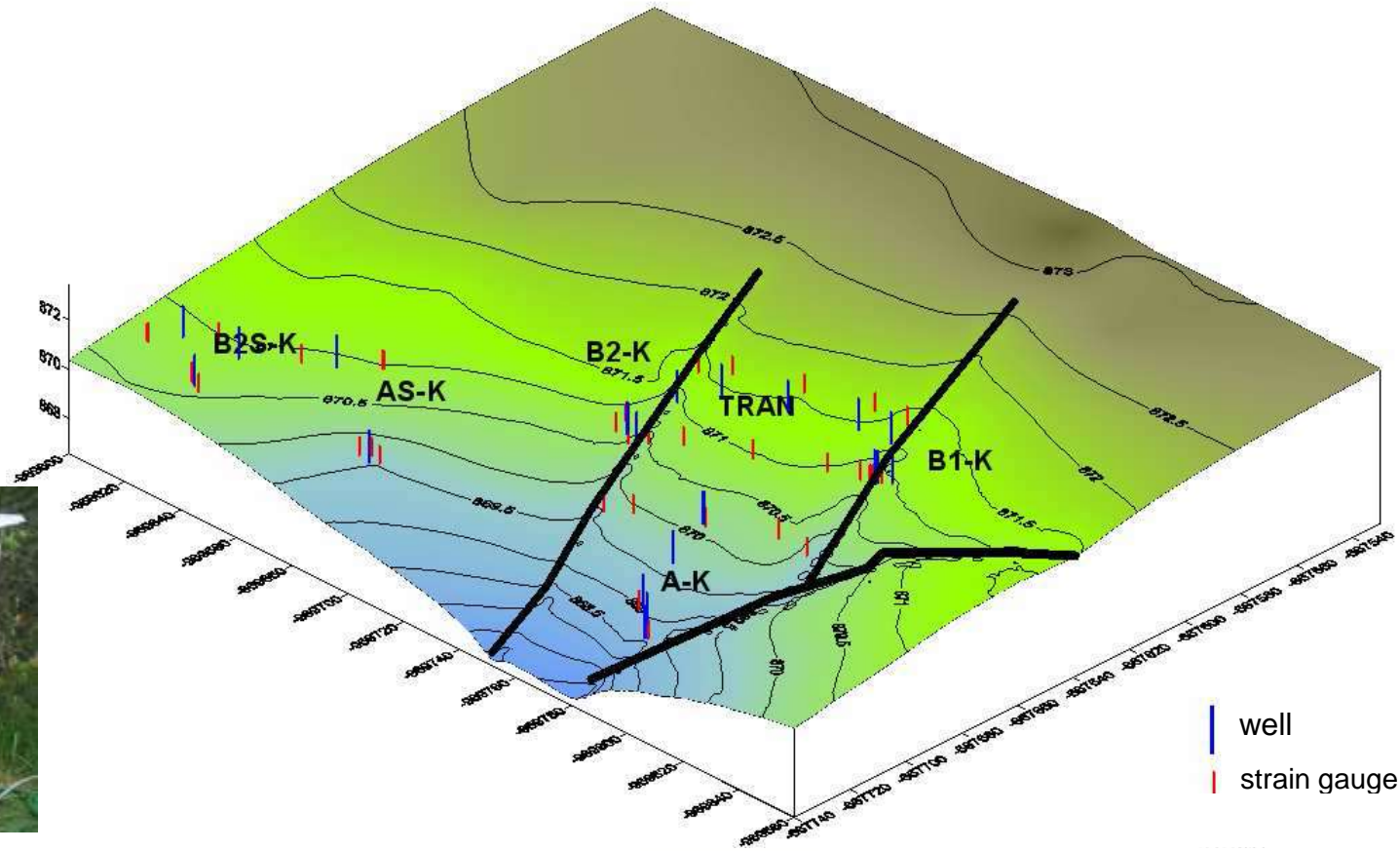


T. G. Masaryk
Water Research
Institute

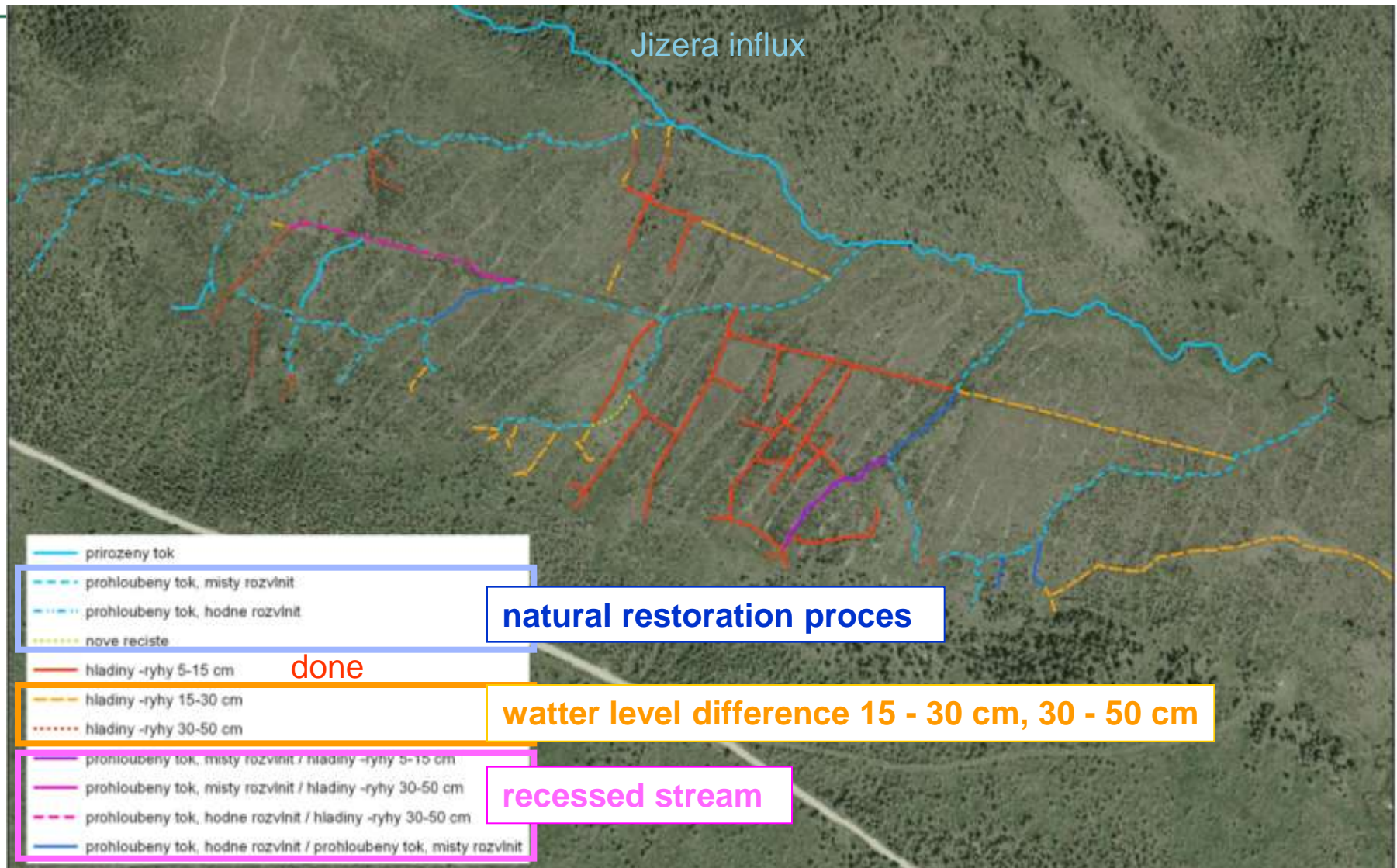


NGO's

Measuring



Scheme of the drainage system restoration



Project documentation - horizontal cut



VARIANTA 3

RÝHA 1

SPÁD HLADIN 15 cm, 30 cm

12.11 VZDÁLENOST HRÁZEK [m]

0.61 HLOUBKA HRÁZEK [m]

HRÁZKA

PŘÍČNÉ ŘEZY

PRAVÝ BŘEH [m n.m.]

LEVÝ BŘEH [m n.m.]

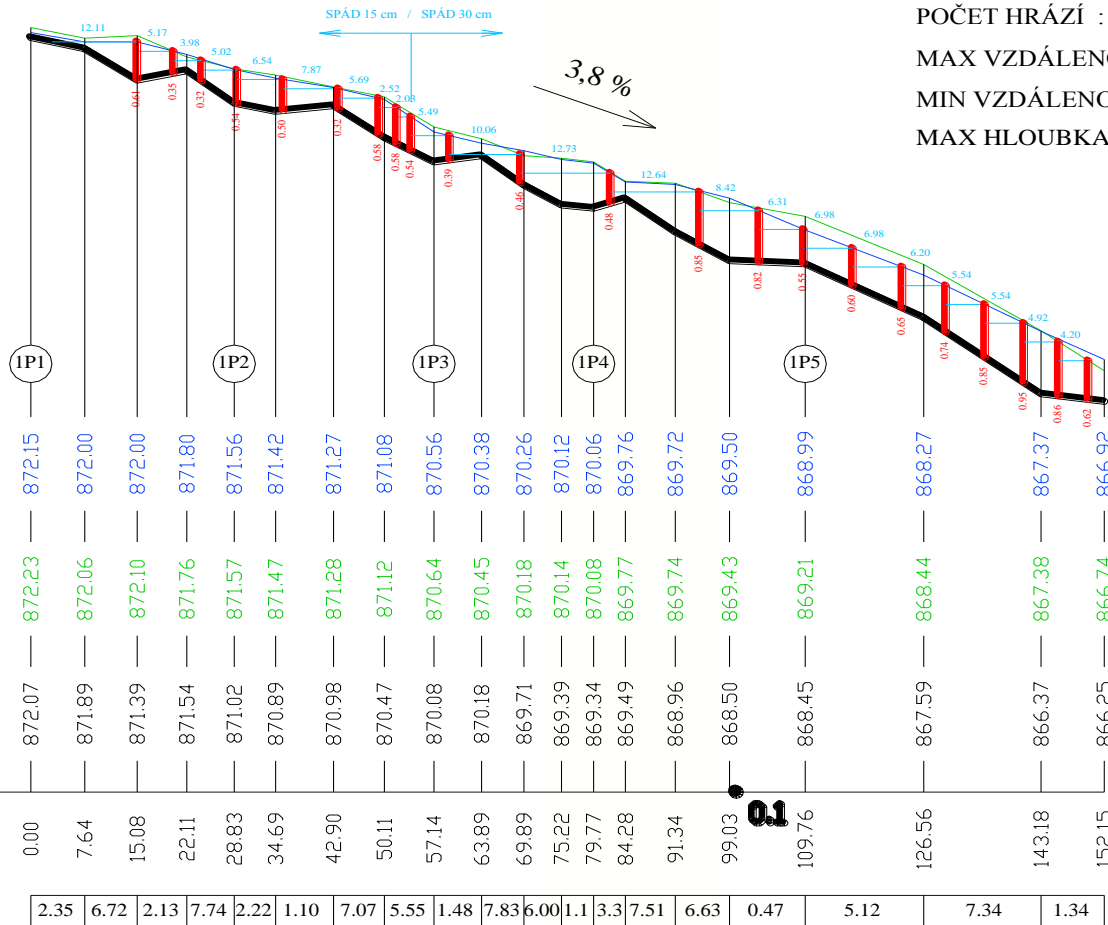
DNO [m n.m.]

860,00 m n.m.

STANIČENÍ [m]

SKLONOVÉ POMĚRY [%]

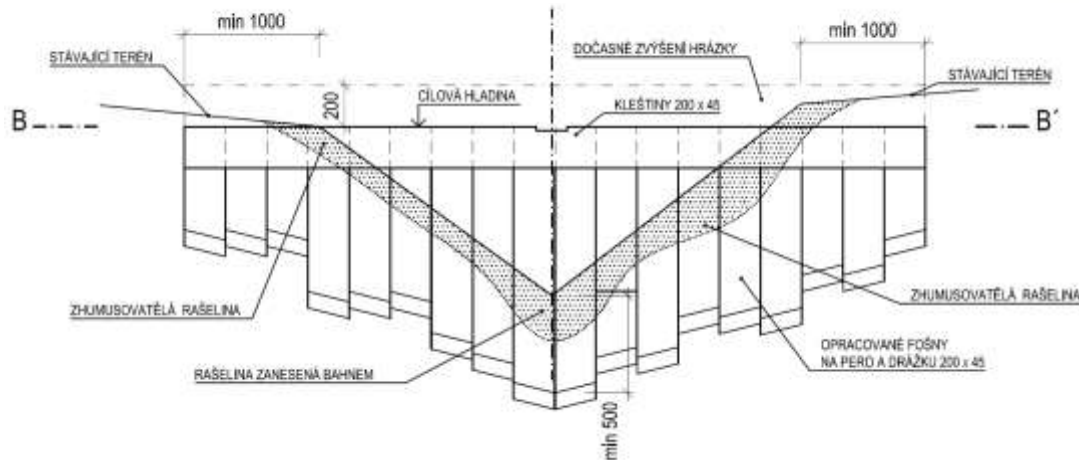
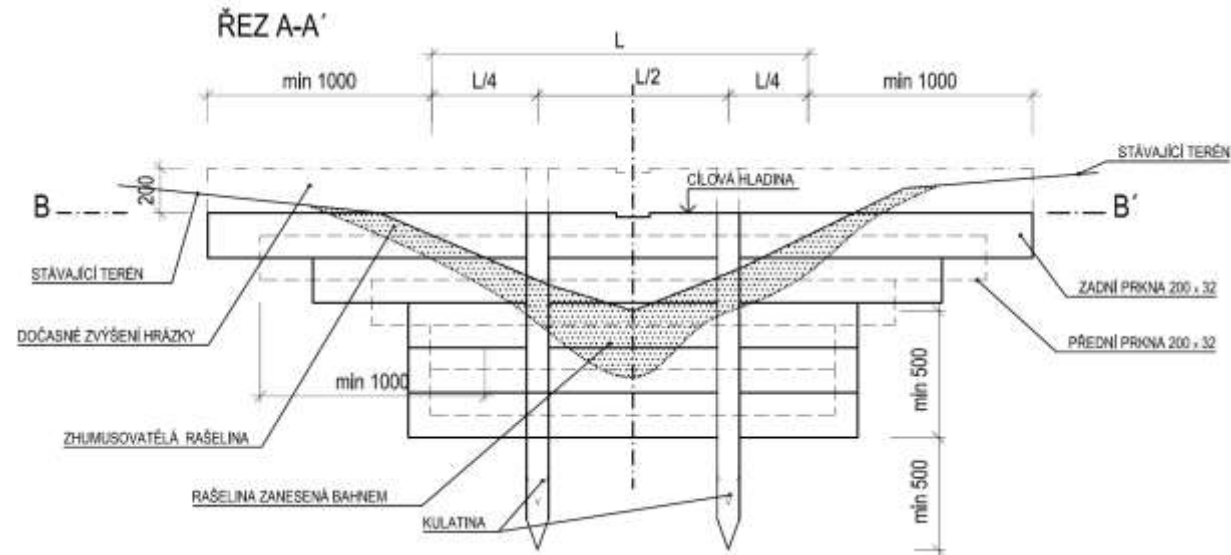
PŘEVÝŠENÍ : 5,82 m



Type of drainage interruption



horizontal type



vertical type

Realization in the field - NGO's



Realization in the field - NGO's



Final state





2008 - visit in NP Šumava - inspiration

2009 - 1st field realization

2017 - cca 800 objects done

financial support -

Ministry of the environment of CR

European funds

Ivan Dejmal Foundation

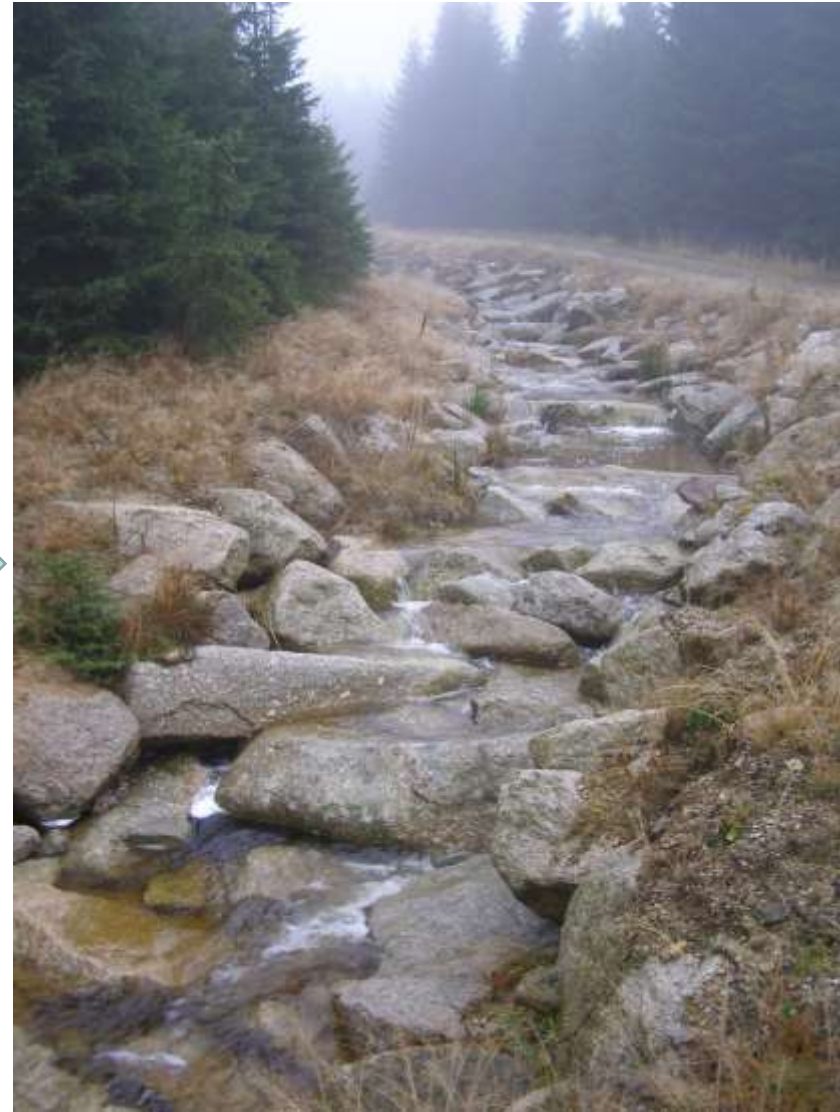
Forests of the Czech Republic



Specific type of drainage



Specific type of drainage



Thank you for your attention

Václav Šrédl

Regional Office Liberec
vaclav.sredl@nature.cz



**AGENTURA OCHRANY
PŘÍRODY A KRAJINY
ČESKÉ REPUBLIKY**

www.nature.cz

