

BRIEF OVERVIEW OF THE TOPIC: SOME KEY STARTING POINTS

WEBINAR

**Protected Areas for
Sustainable Agriculture:
building partnership with farmers**

23rd October 2017 - 15:00 CET

Stefania Petrosillo
Policy Officer EUROPARC Federation
s.petrosillo@europarc.org

Some key starting points



- **Europe's Protected Areas:** National and Regional Parks, Nature and Biosphere Reserves, Marine and Landscape Protected Areas, Natura 2000 Sites. Common aim: to protect Europe's unique variety of wildlife, habitats and landscapes.

- **Green Economy**

Economic growth depends on using up natural resources, that they are not unlimited. It is not a choice between environment protection and economic prosperity: they are strictly interconnected!!

To practice and encourage sustainable behavior, taking account of the value of natural systems, must be a general commitment to all of us.

For farmers and protected areas managers that means to work together, developing policies, methodologies, economic instruments and innovative practices for sustainable production and sustainable consumption, where wealth can be created without harming the environment.



Some key starting points



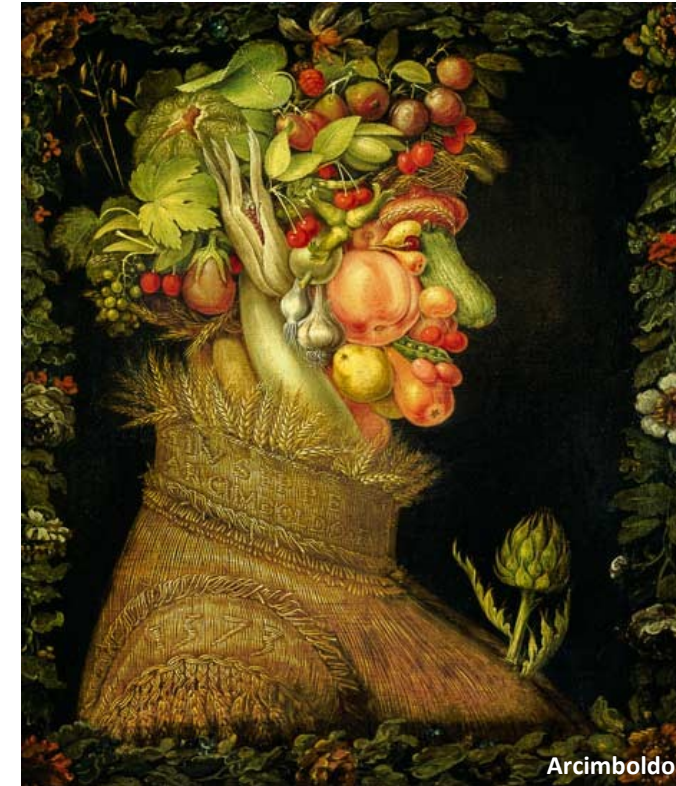
- **Agricultural diversity:** European Protected Areas have to deal with different sort of agricultures and, to promote more ecofriendly practices, have to dialogue with different kind of farmers (e.g. small traditional farmers in Alps, big farm companies in Netherlands...)



Some key starting points

Not only about food production:

- Biodiversity, water, soil, climate, landscape...
- Culture, history, memory, traditions, taste, identity...
- Health, wellbeing, ecosystem services...



Arcimboldo

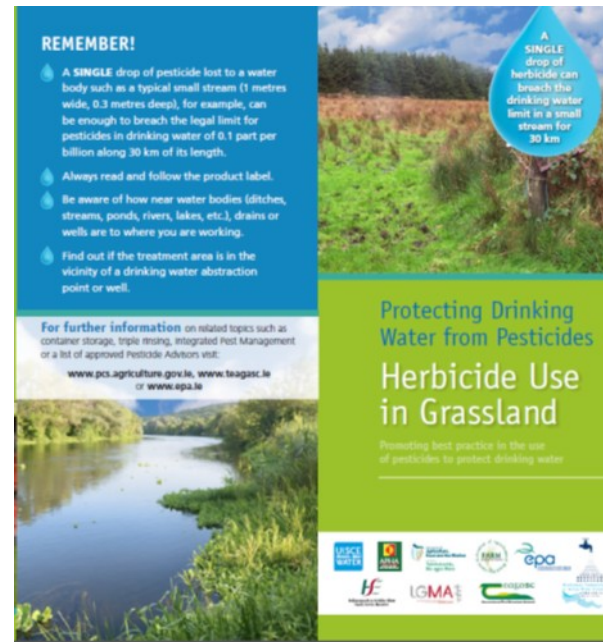


Hans Dahl

Some key starting points

Farmers and Protected Areas:

- Not only conflicts! Many good examples of collaborations!
- Partnership does not mean to agree always on everything...
- *Smile!* Both sides: be positive in the interaction... all of us are speaking and acting to improve the quality of life for us, our children and the planet.



EUROPARC for sustainable agriculture



- EUROPARC Agriculture and Protected Areas Commission ([here](#))
- Training for members: Siggen seminar 2017 “Sustainable Agriculture in and around Protected Areas” ([here](#))
- Case studies collection about Agriculture and Protected Areas ([here](#))
- European Day of Parks 2016 “A Taste of Nature”([here](#)) and the Recipe book ([here](#))
- Webinar “Protected Areas for Sustainable Agriculture – building partnership with farmers” ([here](#))

- Memorandum of Understanding with Slow Food International
- Collaboration with NGOs and farmer associations
- Member of platforms in Brussels (European Habitat Forum –EHF, Sustainable Food and Farming Platform (SFFP), NGOs CAP Working Group)

- Lobby, advocacy and collaboration with the European Institutions (EC, EP, CoR, CoE)

Preparing the CAP's future reform...



- CAP Cycles: early 60's..., 2014-2020; 2021-2027
- Commission 2017 Work Programme on *simplification and modernisation of the CAP*
- Public Consultation: 2 February – 2 May 2017 (results published in July 2017)
- Impact Assessment: during the summer 2017
- Committee of the Region position on future CAP: for a fairer and more sustainable policy, adopted in July 2017
- Further fora and debates at EU and National Level
- Commission Communication (orientation): November or December 2017
- Legislative Proposals (tbc): early 2018 ??
- *Juncker-led debate on the Future of the EU, 5 scenarios to be discussed in the Council of the EU in Dec. 2017*
- *Crucial national elections on 2017*
- *Brexit negotiations (ongoing)*
- *EU Budget (MFF) proposal from Commission in May 2018 ?*
- *New Parliament and Commission in 2019: how to finalize negotiations on the next CAP?*





Case Study 1 – Promoting open spaces with farmers in a forest park as means to increase biodiversity

Serra de Collserola Nature Park, Catalonia - SP

The loss of a mosaic landscape causes loss of biodiversity. Due to the expansion of forest, mainly because of the abandonment of farming activities, some species that depend on open spaces have declined. To counterbalance this situation, the Park is promoting several actions with a participatory approach with farmers.

***Seán Cahill** is a Biologist at Collserola Park's Biological Station. Working on wildlife and biodiversity monitoring in general, with expertise in wildlife conservation and related conflicts in this highly anthropogenic metropolitan protected area subject to multiple peri-urban pressures.*

***Joan Vilamú** is a technical agricultural engineer of the Park, working on the management of topics related to agriculture and livestock in the area.*





Case Study 2 – Food *de-mediation* and *multi-functionality* in a periurban park

Milan South Agricultural Park, IT

“Feeding Milan. Energies for change” was a 5 years framework research programme which addressed the Milanese regional food development.

The framework strategy of the project promoted the values of “zero mile food” and new activities – as the earth market – for proximity leisure and local tourism.

The project aimed at building new food networks based on the two main concepts: de-mediation – in order to shorten up the agri-food chain; and multi-functionality – in order to promote economies of scope among the farmers.

Paolo Bolzacchini is an Agronomist and the Vice President of Slow Food Lombardia

Alessandro Cecchini is a food engineer working in the Biodiversity area of Slow Food Lombardia

In collaboration with Maria Pia Sparla, Parco Agricolo Sud Milano

