

# **LIFE e-Natura2000edu: Supporting e-learning and open education for Natura 2000 managers**

Situation in Spain

Draft, June 20<sup>th</sup> 2018

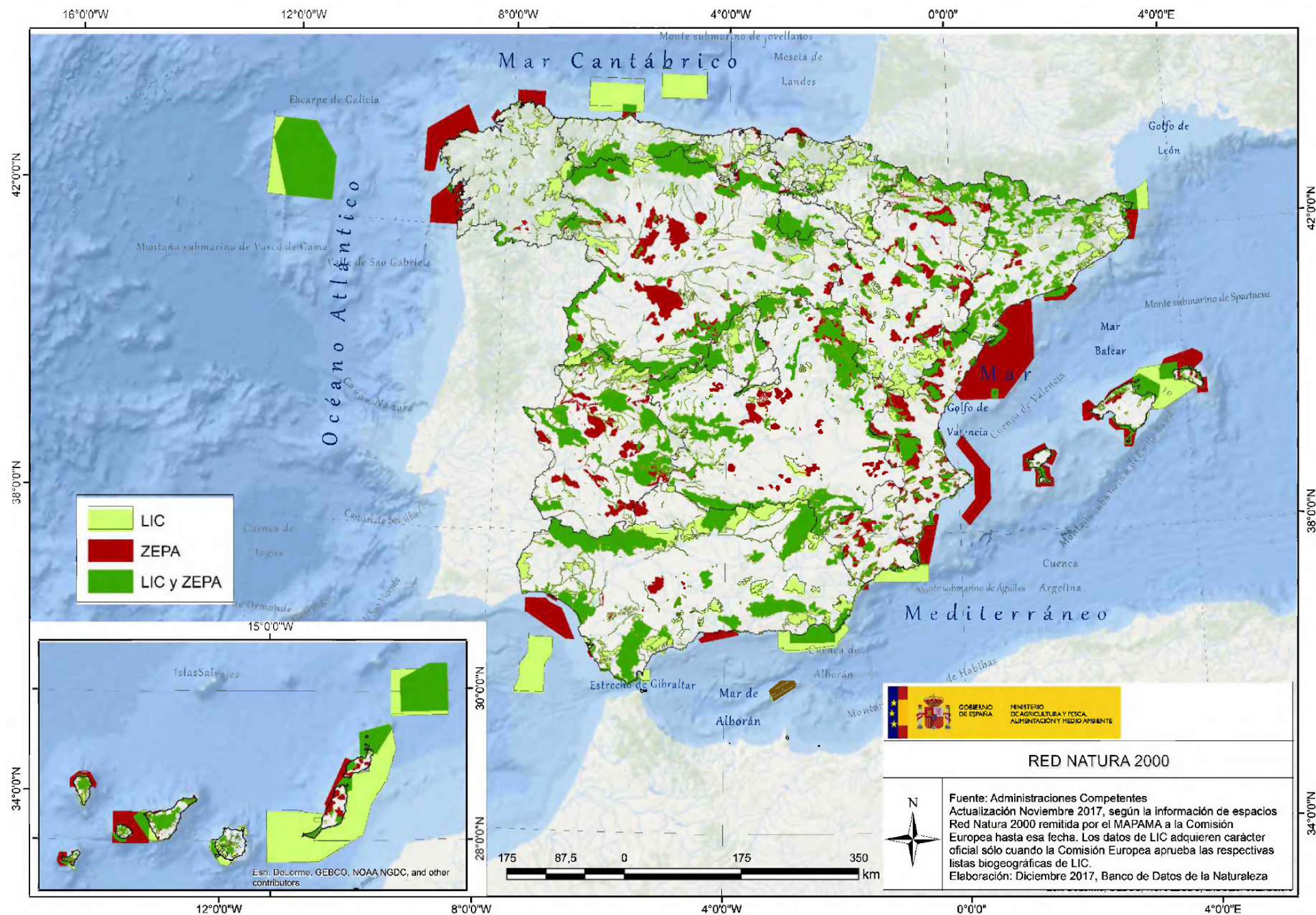


Fundación Interuniversitaria  
**Fernando González Bernáldez**  
PARA LOS ESPACIOS NATURALES



# Identification and assessment of competencies for management of Natura 2000

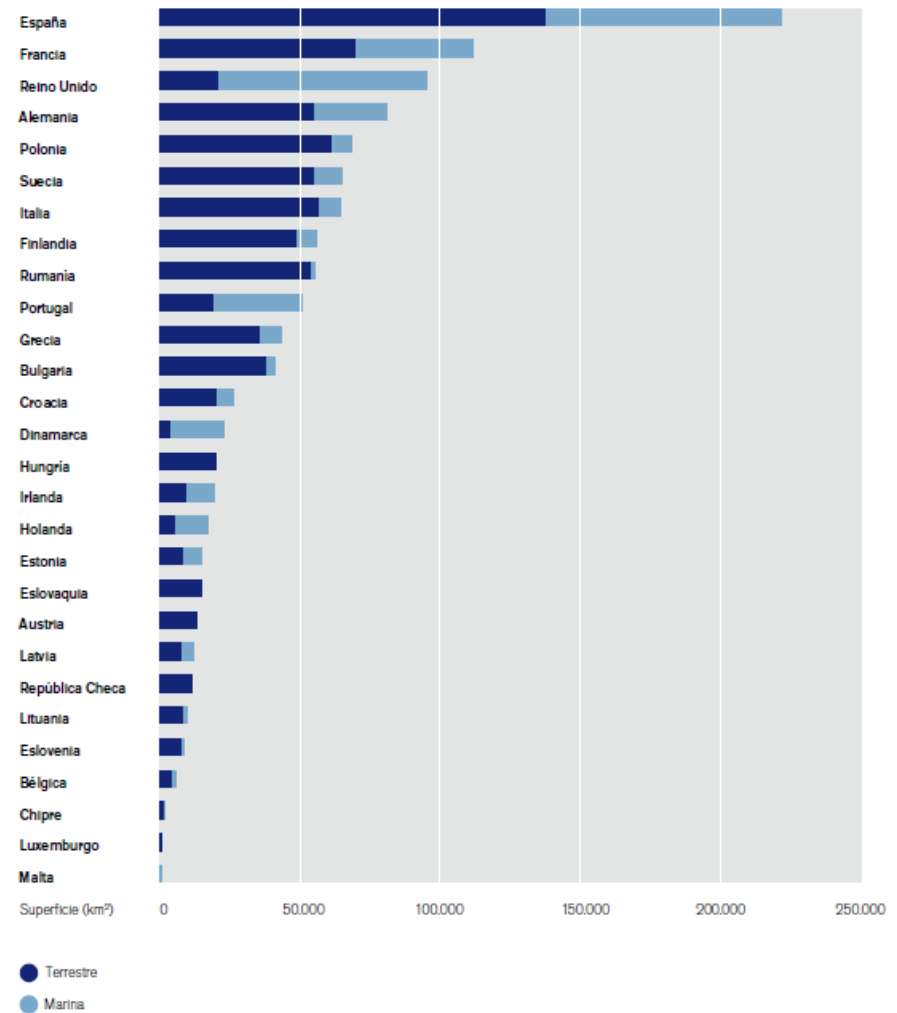
- Collection of information and desk analysis on:
  - the governance types / management structures that apply to the Natura 2000 network in **Spain**
  - management responsibilities and tasks assigned to the entities / individuals who are involved in the management of Natura 2000 sites at different levels (national, regional, local) in **Spain**
  - What are the implications of the approaches in **Spain** for Natura 2000 managers – what are they expected to know and do?



# Natura 2000 in Spain: big, diverse, complex

- Huge network: Spain is the country with more Natura 2000 sites /area in Europe:
  - 22,36 million ha (18,8 million terr.)
  - 27% Spanish surface (terr.)
  - 8% marine
  - Over 2.000 sites: 1.467 SCIs / 644 SPAs
  - 4 biogeographical regions / 5 marine

Figura 3. Superficie de Red Natura 2000 por países

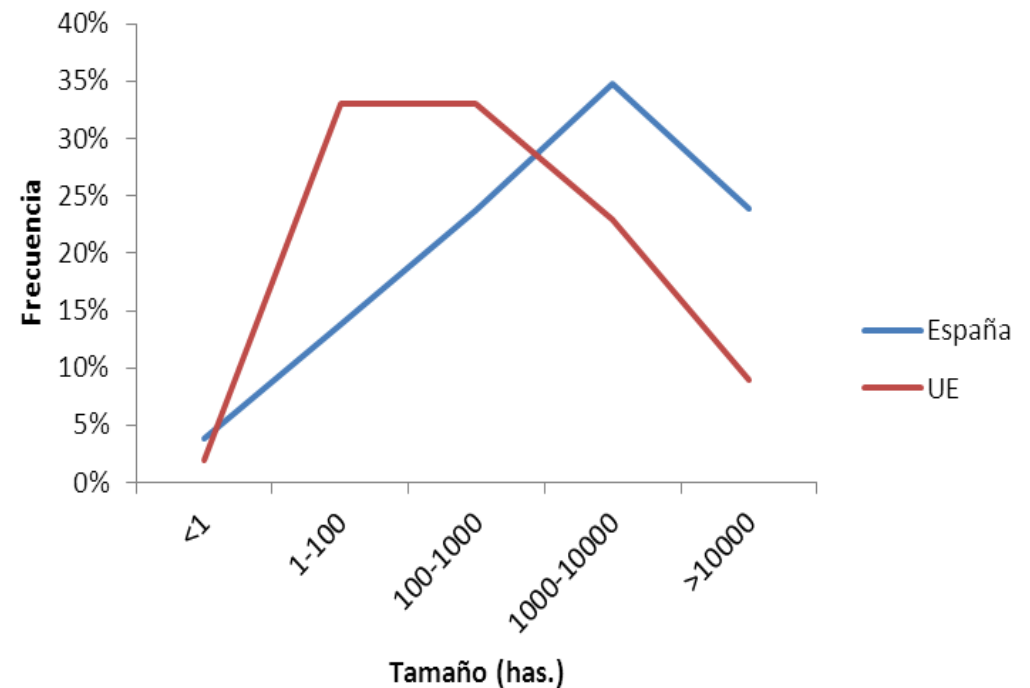


Fuente: Barómetro 2016 ([www.mapama.gob.es](http://www.mapama.gob.es))

# Natura 2000 in Spain

## ➤ Highly complex areas:

- Big areas (compared with other European N2000 sites):
  - Average size: 152 km<sup>2</sup>
  - Europe: 35% sites < 100 ha, 31% >1.000 ha, 9% >10.000 ha.
  - Spain: 59% >1.000 ha, 24% > 10.000 ha,
- Inhabited
- Land uses: 74% natural / 24% agriculture/forestry



# Natura 2000 in Spain

- 47% of Natura 2000 sites overlaps with other protected areas (National and Natural Parks, Nature Reserves, Protected landscapes, etc., under national and regional legislation)

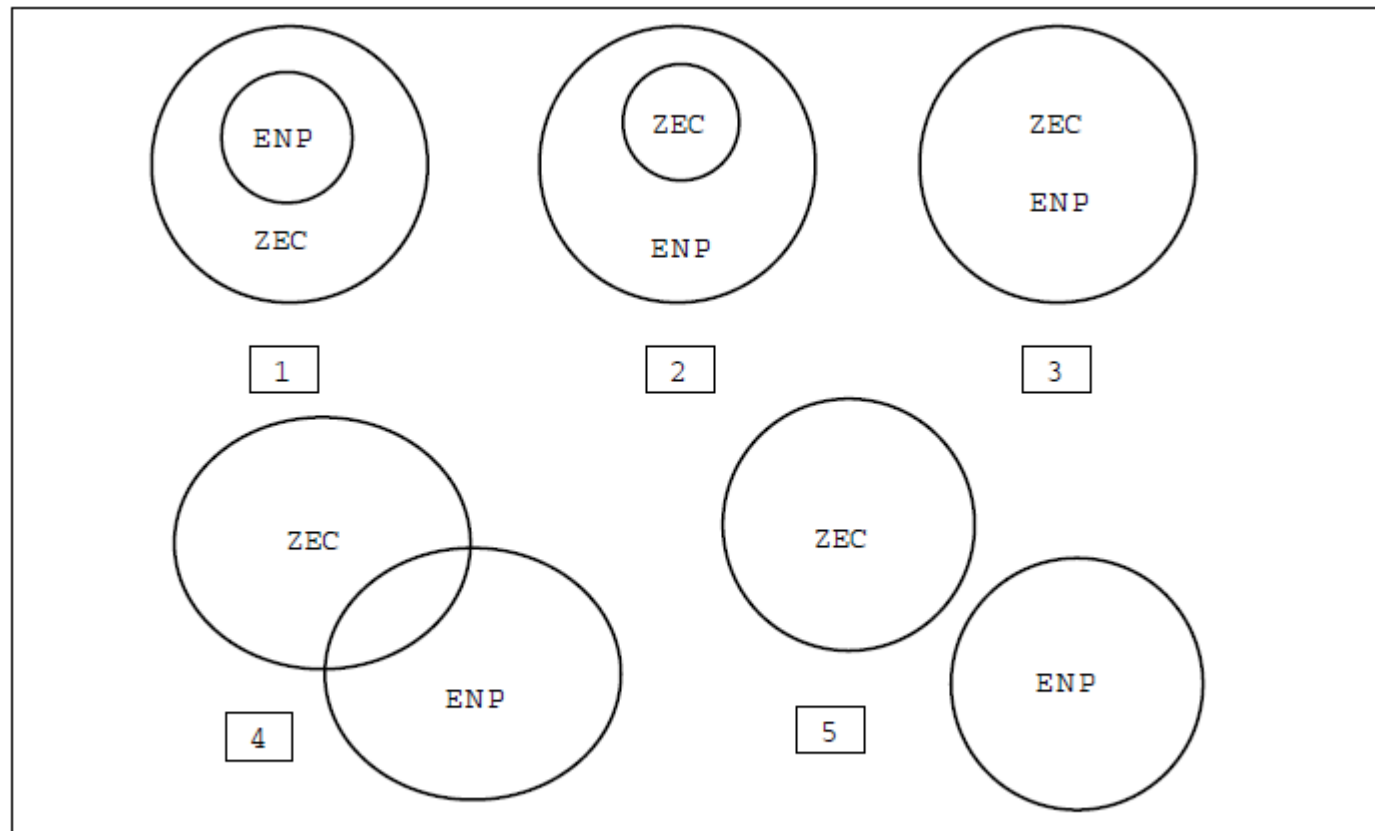


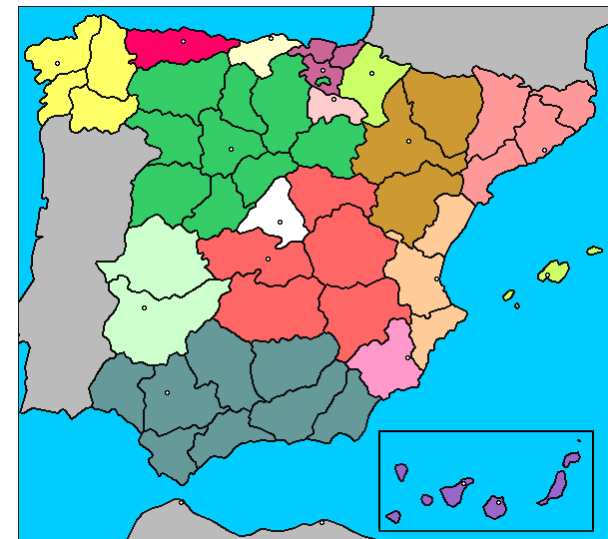
Figura 1.1. Posibles escenarios de relación entre un espacio natural protegido y una ZEC.



# Natura 2000 in Spain

## The governance types / management structures

- All of them Type A. Governance by government:
  - 17 Regions + National Government (marine sites)
  - 17 organisational structures: biodiversity dept. / PA dept. / Provinces
    - Local administrations have no competence in management/planning N2000. Urban planning/activities are affected by N2000 → communication
  - Different planning models (80% management plans formally approved)
    - EUROPARC-Spain: quality criteria for RN2000 planning / capacity building
  - Funding:
    - General budget (underfunded)
    - LIFE projects, FEADER, FEMP, etc.
  - Land stewardship in Natura 2000: 900 agreements, aprox. 212.000 ha (at least)



# Natura 2000 in Spain – Management

**Management responsibilities and tasks assigned to the entities / individuals who are involved in the management of Natura 2000 sites at different levels**

- Human resources:
  - General situation: understaffed
  - Government / public enterprises
  - If Natura 2000 overlaps PA: PA staff manages the site
  - Otherwise, best case scenario 1 or 2 managers / province in central services.
- Tasks:
  - Up to now, most of the efforts in planning (elaboration of management plans)
  - 70% preventive management actions (authorisations, reports on impact assessment, mainly)



# Natura 2000 & training needs: old tasks, new challenges

What are the implications of the approaches in Spain for Natura 2000 managers – what are they expected to know and do?

