

A scenic landscape photograph of Oulanka National Park. The foreground is dominated by a lush, green meadow with various wildflowers and tall grasses. In the middle ground, a calm, dark lake reflects the surrounding forest and the misty mountains in the background. The forest is dense and green, with some taller, darker trees visible. The background features rolling hills and mountains shrouded in a thick, white mist or fog, creating a serene and atmospheric scene. The sky is bright and overcast.

OULANKA National Park

High diversity of habitats and species

- 400 protected species with 4400 locations
- Many relict species, one endemic subspecies
- Many “Oulanka species” – in Finland only known from Oulanka
- New species named after Oulanka

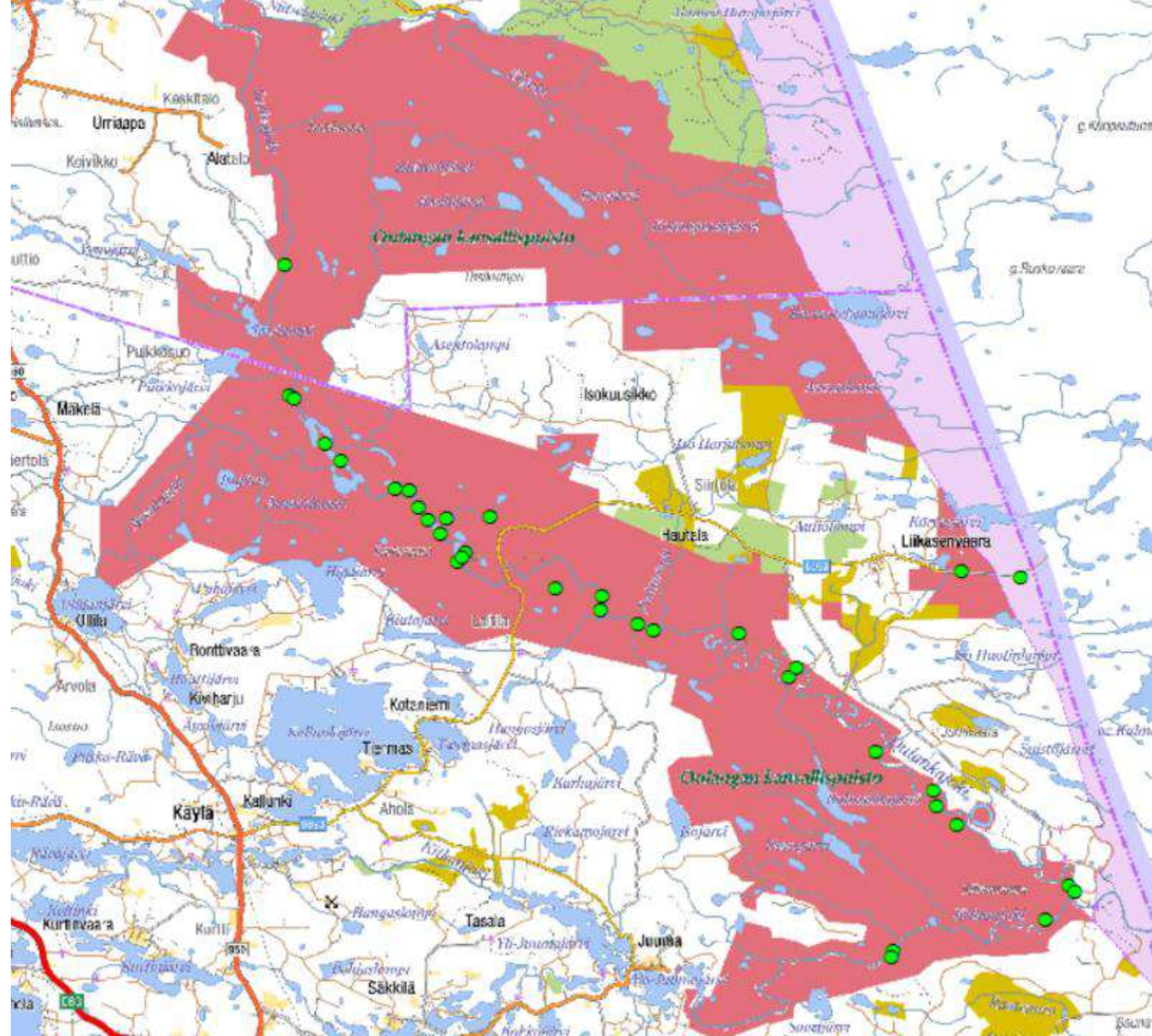




Management of semi-natural grasslands

Meadows under management in Oulanka

- Alluvial meadows 23 ha (29 areas)
- Dry land meadows 3 ha (4 areas)
- Mire meadow 1 ha (1 area)





Horsmamutka alluvial meadow





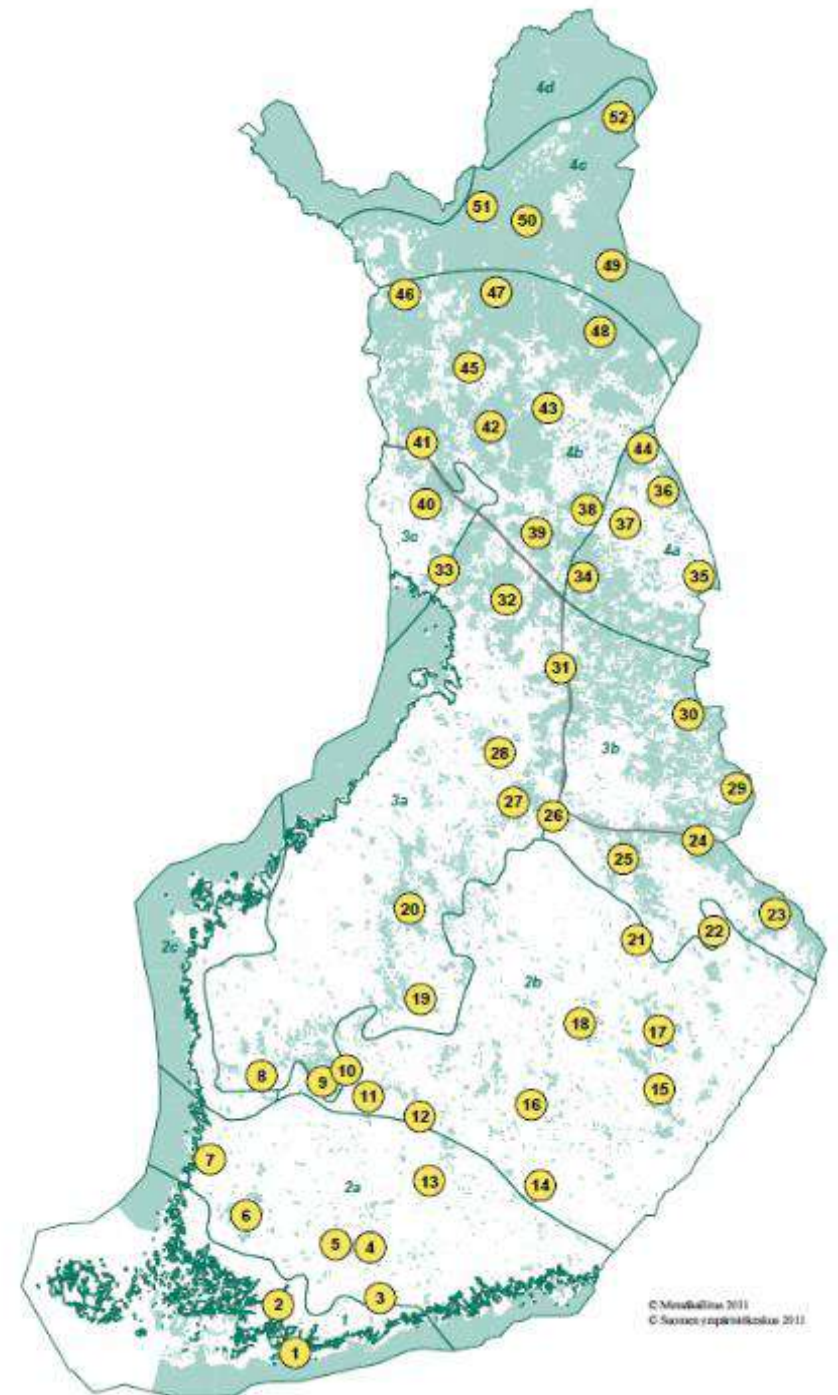
Lonicera caerulea

(Bluefly honeysuckle) in
Horsmamutka alluvial meadow

Small population and continuing
decline of population due to
overgrowth -> threatened (EN,
endangered)

Fire continuum areas in Finland

- Nationwide network of 52 fire continuum areas
- Fire continuums are maintained by
 - controlled burning in conservation areas
 - controlled burning in state-owned commercial forests
 - controlled burning in private owned forests
 - natural fires
- Burnings 1989-2018 on conservation areas
 - in total 2000 ha -> 70 ha/year
 - average size 8 ha





History of forest fires in Oulanka

<< 1700 – natural fires

1700-1900 – slash and burn fires (100-200 ha?)

1900-1950 – “uncontrolled forest fires” (100-200 ha?)

Controlled burnings in Oulanka



1992 – first controlled burning (5 ha)

2006 – Green Belt LIFE (7 ha)

2019 – Light & Fire LIFE (17 ha)

2020 – Beetles LIFE (19 ha)

> 2020 -



Reintroductions of *Epilobium laestadii*

- 48 present locations in Finland, approximately half in Oulanka region
- Fragmented occurrence & continuing decline of locations due to drainage -> threatened (EN, endangered)
- Habitats on rich fens & springs with seepage water
- Reintroductions in locations where species has gone extinct (ESCAPE-Life)



Examination of source populations



Habitat improvement before reintroductions



Planting and marking the individuals



Creating habitat for *Scapania carinthiaca*

- A bryophyte of five locations in Finland (four in Oulanka)
- Small population & threat of trampling -> threatened (CR, critically endangered)
- Grows on decaying conifer logs in very moist places





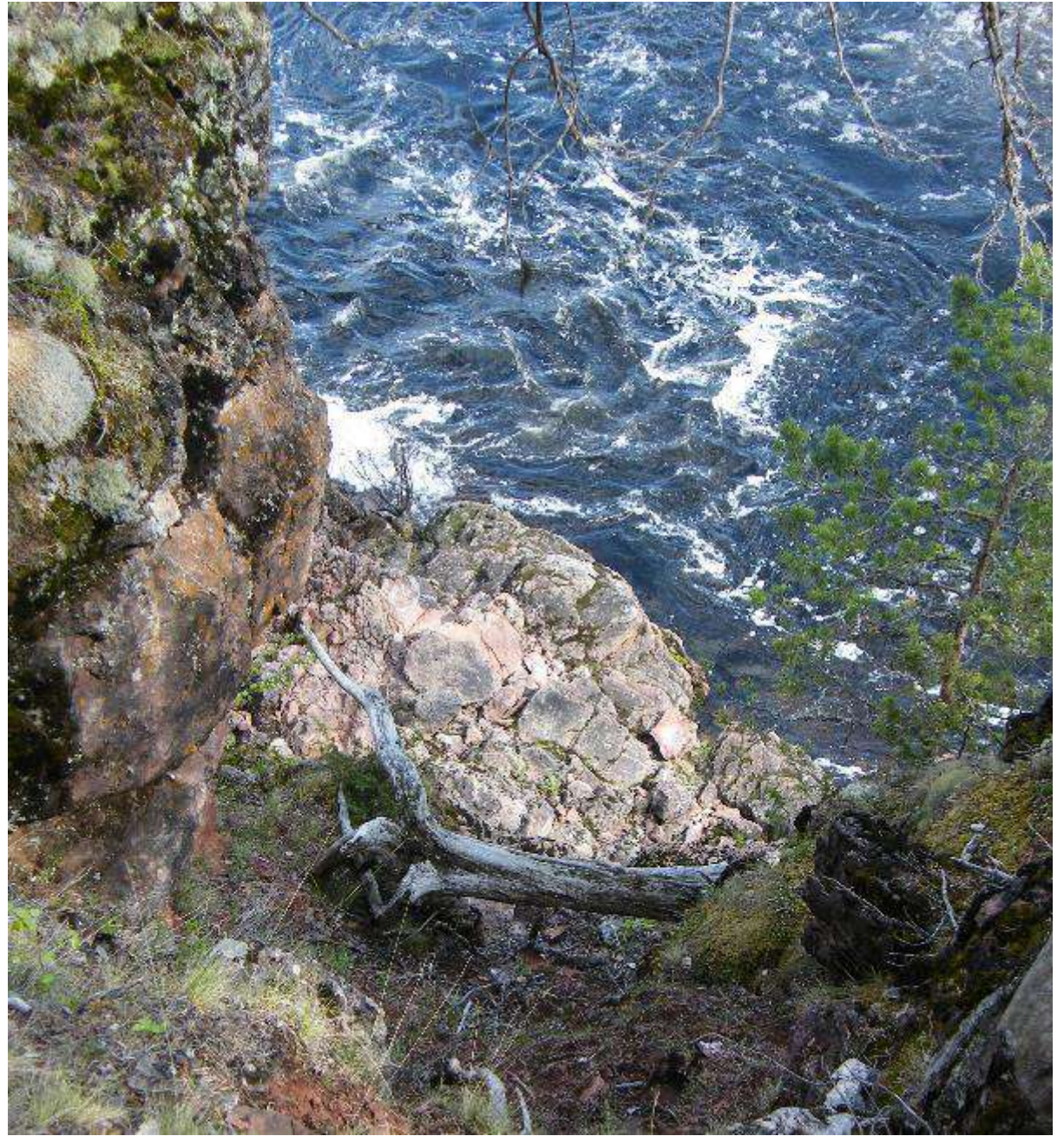




Protecting *Encalypta mutica*

- A bryophyte with 14 locations in Finland (four in Oulanka)
- Small population & threat of trampling -> threatened (EN, endangered)
- Grows on steep, eroding slopes of dolomite rock





Scapania glaucocephala meets tourism?







Thank you!