

WELCOME TO BRUSSELS

For the Seminar Dialogue 2019

The BRUSSELS OFFICE of THE
EUROPARC FEDERATION

is delighted to offer you....

A guided tour in the mysterious world of the European Union Institutions



Follow me, please



<https://youtu.be/CIUKkD0AGyw>

By the way... do you know the name and the author of the EU anthem?

[Ode to Joy](#) in the [Symphony No. 9](#) of [Ludwig van Beethoven](#)

<https://youtu.be/D4wfGlzCYZI>



And of the theme song of the Eurovision?

<https://youtu.be/4EbsFrZING4>

[Te Deum H. 146](#) of [Marc-Antoine Charpentier](#)



European Parliament

Council of Europe

I THINK I'LL GO BACK TO BED!

Committee of Regions

European Council

DG

an session

Commissioners

... and others...

A FIRST OVERVIEW TO START TO FILL AT HOME WITH THE EU INSTITUTIONS....

https://multimedia.europarl.europa.eu/en/at-home-with-the-european-institutions_V007-0007_ev

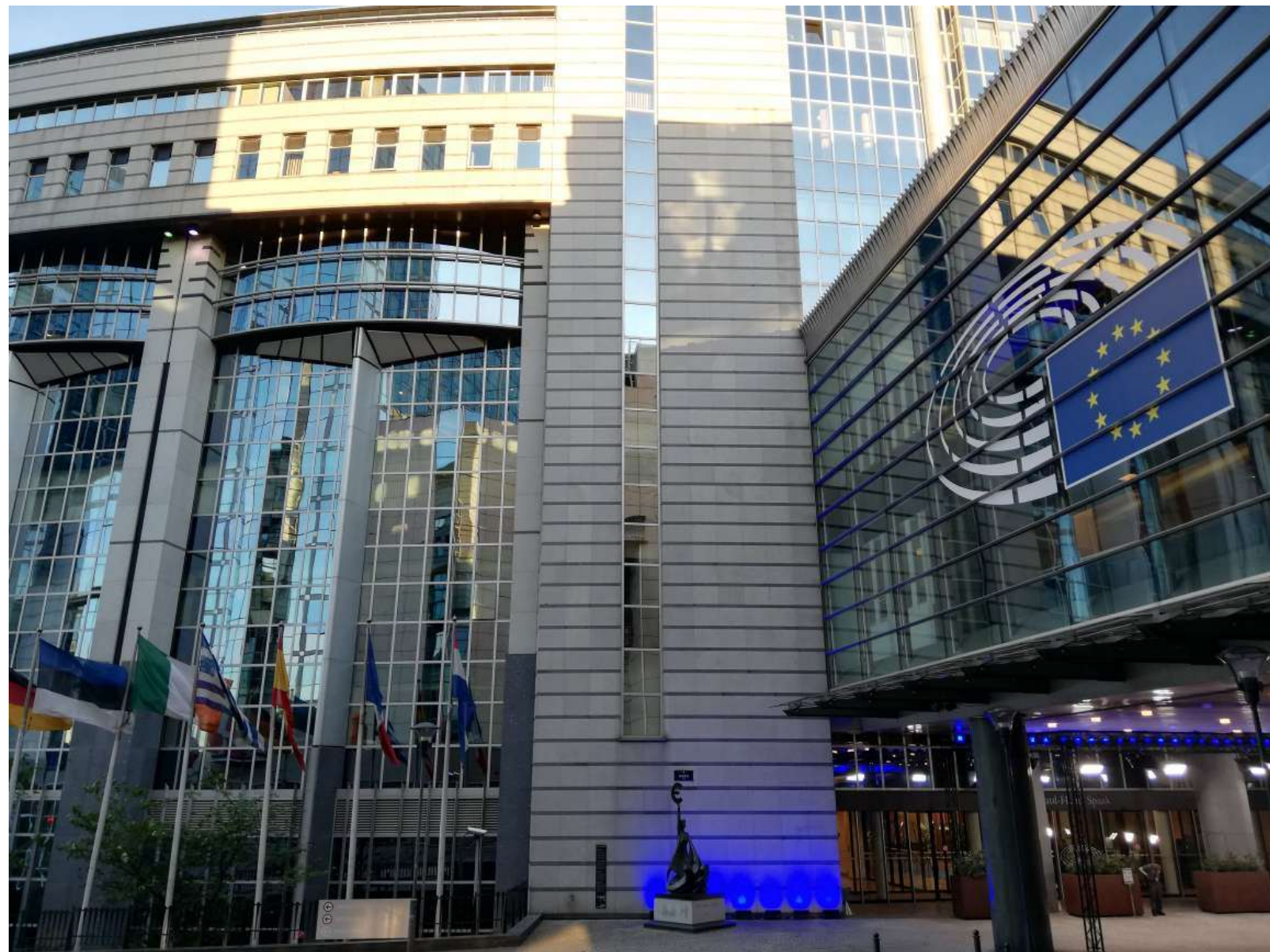
NO PANIC!!!





The Parliament :

- Acts as a co-legislator (with the Council):
to adopt and amend legislative proposals
to decide on the EU budget
- Supervises the work of the Commission and other EU bodies
- Cooperates with national parliaments of EU countries to get their input.



PLENARY

The Members of the European Parliament are not organised by nationality, but by political affiliation (political groups)

- EPP Group of the European People's Party (Christian Democrats)
- S&D Group of the Progressive Alliance of Socialists and Democrats in the European Parliament
- Renew Europe Group
- Group of the Greens/EFA European Free Alliance
- ID Identity and Democracy Group
- ECR European Conservatives and Reformists Group
- GUE/NGL Confederal Group of the European United Left - Nordic Green Left
- NI non-attached

Interactive seating plan of the hemicycle of the European Parliament

Search by MEP's name or seat number

Filter options: All seats, EPP, S&D, Renew, Greens/EFA, ID, ECR, GUE/NGL, NI, Council of the European Union, European Commission

EUROPARC DIALOGUE ADVOCACY FEDERATION

DIALOGUE, ADVOCACY:

- EUROPARC SECTIONS
- NATIONAL INSTITUTIONS
- PROTECTED AREAS

Strasbourg 21.10.2019

See also: Interactive seating plan of the hemicycle in Brussels

COMMITTEES

In order to do the preparatory (AND MOST IMPORTANT) work for Parliament's plenary sittings, the Members are divided up among a number of specialised standing Committees.

They are Parliament bodies and express official Parliament's opinion.

INTERGROUPS



Intergroups can be formed by Members from any political group and any committee.

Aim: Informal exchanges of views on particular subjects and promoting contact between Members and civil society (i.e., biodiversity, tourism...)

They are not Parliament bodies and not express official Parliament's opinion.

AFET Foreign Affairs

DROI Human Rights

SEDE Security and Defence

DEVE Development

INTA International Trade

BUDG Budgets

CONT Budgetary Control

ECON Economic and Monetary Affairs

EMPL Employment and Social Affairs

ENVI Environment, Public Health and Food Safety

ITRE Industry, Research and Energy

IMCO Internal Market and Consumer Protection

TRAN Transport and Tourism

REGI Regional Development

AGRI Agriculture and Rural Development

PECH Fisheries

CULT Culture and Education

JURI Legal Affairs

LIBE Civil Liberties, Justice and Home Affairs

AFCO Constitutional Affairs

FEMM Women's Rights and Gender Equality

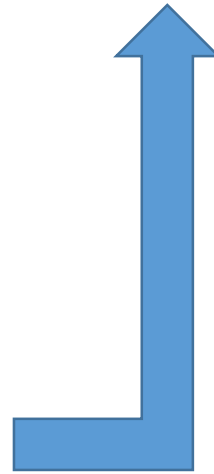
PETI Petitions





European Council Council of the European Union

<https://www.youtube.com/watch?v=RKPE3vWGJb0>





Council of Agriculture and Fishery meeting



Ministers of **Member States**



DIALOGUE, ADVOCACY:

- EUROPARC SECTIONS
- NATIONAL INSTITUTIONS
- PROTECTED AREAS



It is the EU's executive body:

- responsible for proposing and implementing EU laws
- monitoring the EU treaties
- and the day-to-day running of the EU



The Commission is composed of the **College of Commissioners** of 28 members, including the President and Vice-Presidents.

The Commissioners, one from each EU country, are the Commission's political leadership

5-year term

Each Commissioner is assigned responsibility for specific policy areas by the President

President and Commissioners must be approved by the European Parliament



Departments / Executive agencies

SERVICE DEPARTMENT | PMO

Administration and Payment of Individual Entitlen

DIRECTORATE-GENERAL | AGRI

Agriculture and Rural Development

DIRECTORATE-GENERAL | BUDG

Budget

DIRECTORATE-GENERAL | CLIMA

Climate Action

DIRECTORATE-GENERAL | COMM

Communication

DIRECTORATE-GENERAL | CONNECT

Communications Networks, Content and Technolc

DIRECTORATE-GENERAL | COMP

Competition

EXECUTIVE AGENCY | CHAFEA

Consumers, Health, Agriculture and Food Executi

SERVICE DEPARTMENT |

Data Protection Officer

DIRECTORATE-GENERAL |

Economic and Financial



EXECUTIVE AGENCY | EACEA

Education, Audiovisual and Culture Exec

DIRECTORATE-GENERAL | EAC

Education, Youth, Sport and Culture

DIRECTORATE-GENERAL | EMPL

Employment, Social Affairs and Inclusion

DIRECTORATE-GENERAL | ENER

Energy

DIRECTORATE-GENERAL | ENV

Environment

SERVICE DEPARTMENT | OLAF

European Anti-Fraud Office

DIRECTORATE-GENERAL | ECHO

European Civil Protection and Humanitari

DIRECTORATE-GENERAL | NEAR

European Neighbourhood Policy and Enla

SERVICE DEPARTMENT | EPSO

European Personnel Selection Office

SERVICE DEPARTMENT | EPSC

European Political Strategy Centre

EXECUTIVE AGENCY | ERCEA

European Research Council Executive Ag...

SERVICE DEPARTMENT | IAS

Internal Audit Service

DIRECTORATE-GENERAL | GROW

Internal Market, Industry, Entrepreneurs

DIRECTORATE-GENERAL | DEVCO

International Cooperation and Develop

DIRECTORATE-GENERAL | SCIC

Interpretation

DIRECTORATE-GENERAL | JRC

Joint Research Centre

DIRECTORATE-GENERAL | JUST

Justice and Consumers

SERVICE DEPARTMENT | SJ

Legal Service

SERVICE DEPARTMENT

Library and e-Resources Centre

DIRECTORATE-GENERAL | MARE

Maritime Affairs and Fisheries

DIRECTORATE-GENERAL | HOME

Migration and Home Affairs

DIRECTORATE-GENERAL | MOVE

Mobility and Transport

DIRECTORATE-GENERAL | EUROSTA

Eurostat - European statistics

EXECUTIVE AGENCY | EASME

Executive Agency for Small and M

DIRECTORATE-GENERAL | FISMA

Financial Stability, Financial Servi

SERVICE DEPARTMENT | FPI

Foreign Policy Instruments

DIRECTORATE-GENERAL | SANTE

Health and Food Safety

SERVICE DEPARTMENT

Historical Archives Service

DIRECTORATE-GENERAL | HR

Human Resources and Security

DIRECTORATE-GENERAL | DIGIT

Informatics

SERVICE DEPARTMENT | OIB

Infrastructure and Logistics in Bru

SERVICE DEPARTMENT | OIL

Infrastructure and Logistics in Lu

EXECUTIVE AGENCY | INEA

Innovation and Networks Executiv

SERVICE DEPARTMENT | OP

Publications Office

DIRECTORATE-GENERAL | REGIO

Regional and Urban Policy

DIRECTORATE-GENERAL | RTD

Research and Innovation

EXECUTIVE AGENCY | REA

Research Executive Agency

SERVICE DEPARTMENT | SG

Secretariat-General

SERVICE DEPARTMENT | SRSS

Structural Reform Support Service

SERVICE DEPARTMENT | ARTICLE 50 TASK FORCE

Taskforce on Article 50 negotiations with the U

DIRECTORATE-GENERAL | TAXUD

Taxation and Customs Union

DIRECTORATE-GENERAL | TRADE

Trade

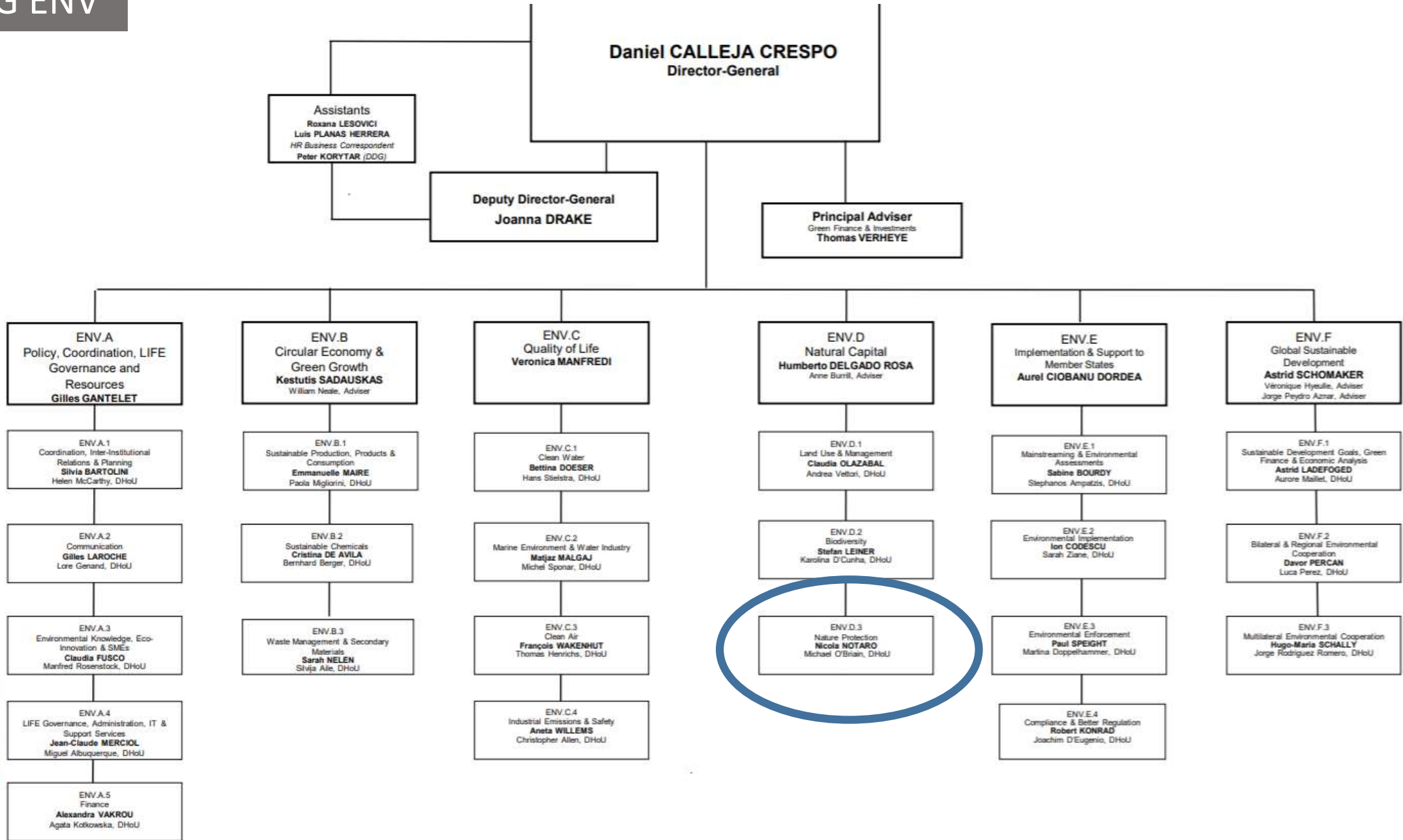
DIRECTORATE-GENERAL | DGT

Translation

DG ENV

EASME B.3
(Mirror Unit)
LIFE & CIP Eco-
innovation
Angelo SALSI, HoU

EASME C.1
(Mirror Unit)
Finance
Ch. Reffay, DHoU





The EU's Assembly of Regional and Local Representatives from all 28 Member States

Advisory body



DIALOGUE, ADVOCACY:

- EUROPARC SECTIONS
- NATIONAL INSTITUTIONS
- PROTECTED AREAS



https://europa.eu/european-union/index_en

Stefania Petrosillo
Policy Officer

EUROPARC Federation
s.petrosillo@europarc.org



The Seminar Dialogue 2019 is co-funded by the European Union.

The organisation of this event has been supported financially in the framework of the European Commission's (Directorates General Environment and Climate Action) LIFE + funding programme of operating grants for European Environmental NGOs.

Responsibility for the information and views expressed in the event lies entirely with the authors.