

« NaturAdapt,
The essential adaptation. »

Europarc climate change workshop

Key learning

Kenzo Héas – Massane forest National
Natural reserve

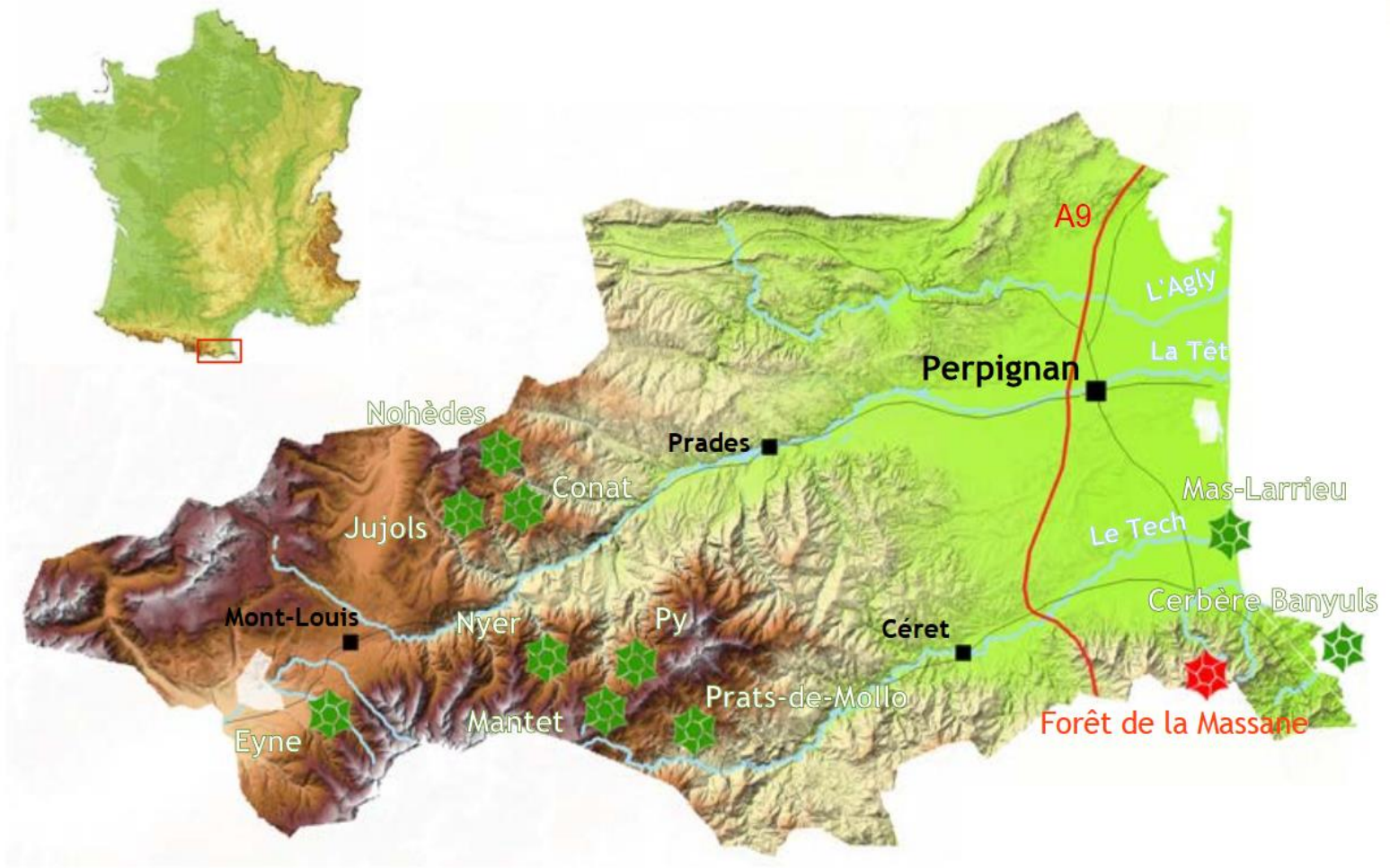




My Key learning

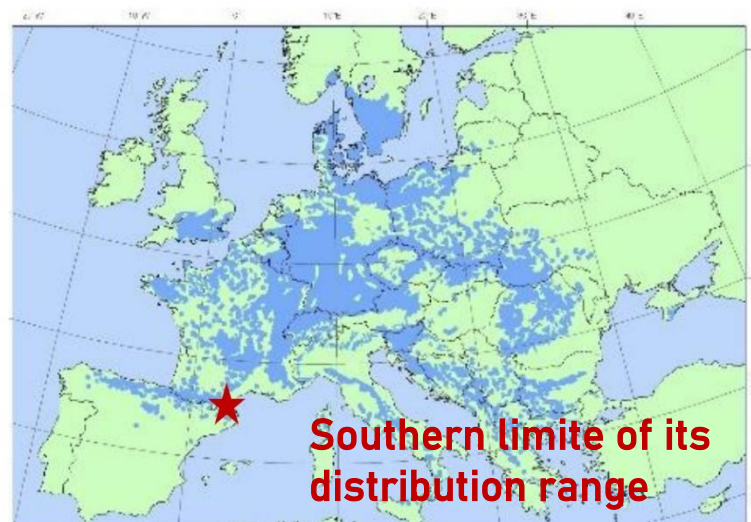
The process of planning for climate change adaptation in a protected area, requires a **systemic / holistic approach**

Massane Forest National Reserve

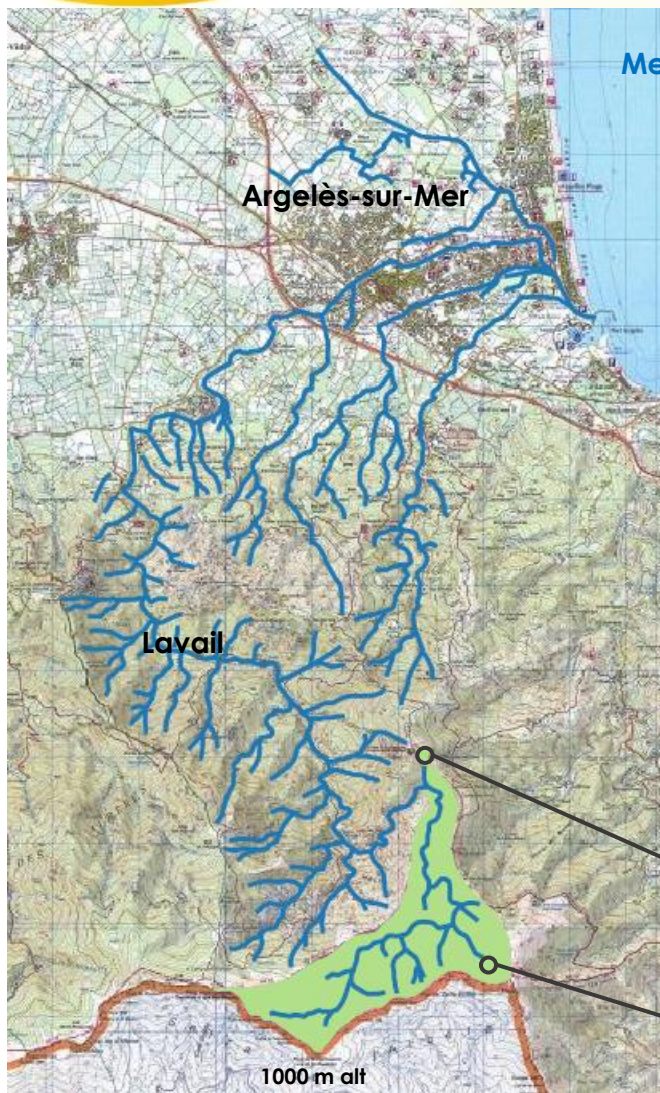


Massane Forest National Reserve

Well known for her beech forest



Massane Forest National Reserve : head of the watershed



Mediterranean sea

Argelès-sur-Mer

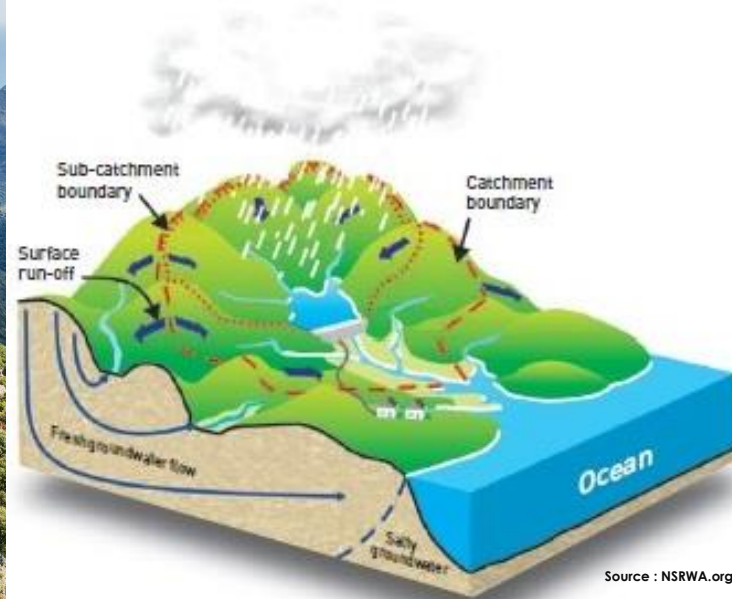
Lavail

1000 m alt



Massane
Tower

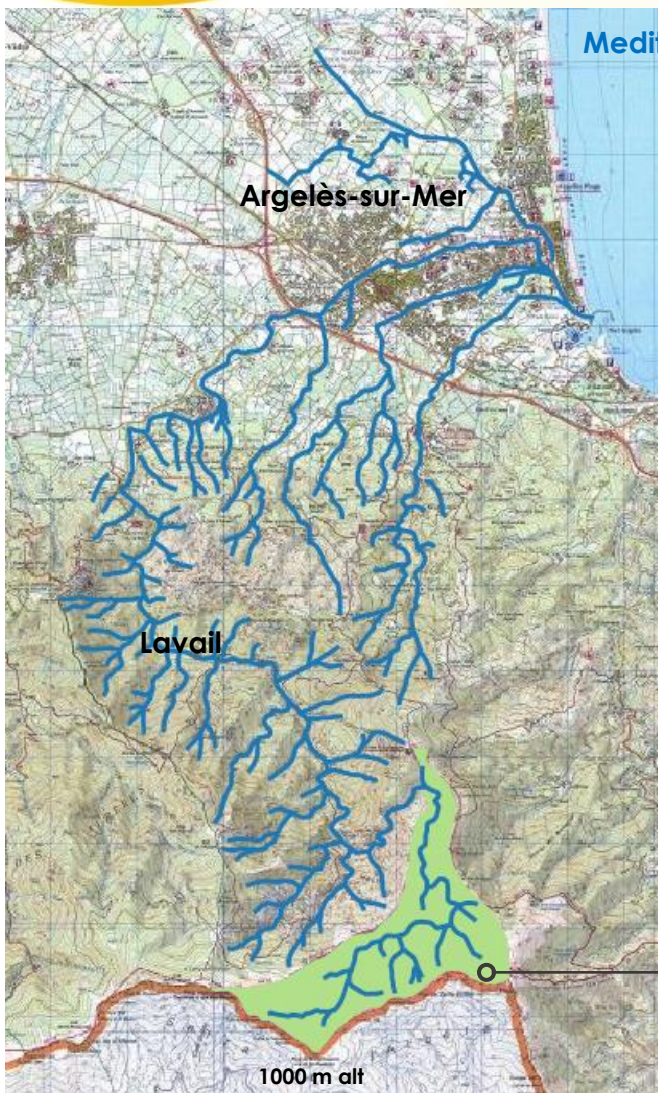
Massane Forest National
Reserve







Source : NSRWA.org

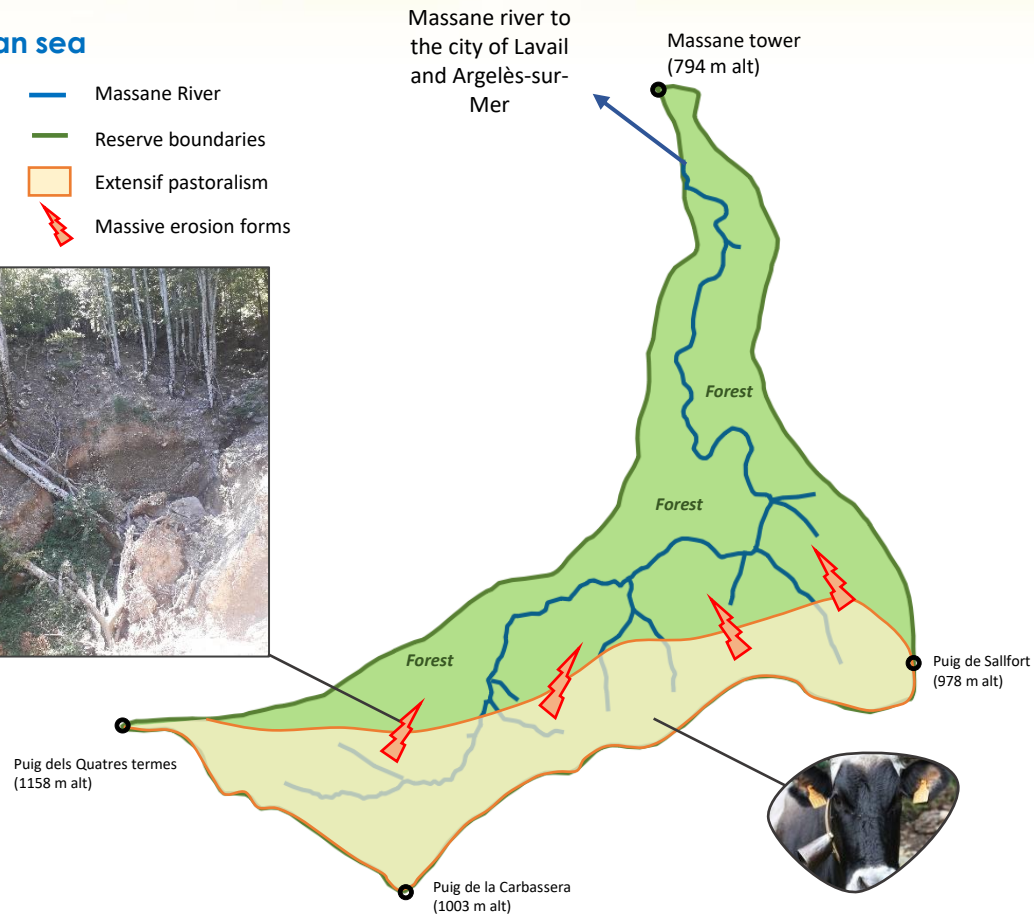
All actions taken upstream have
consequences downstream

Massane Forest National Reserve : head of the watershed



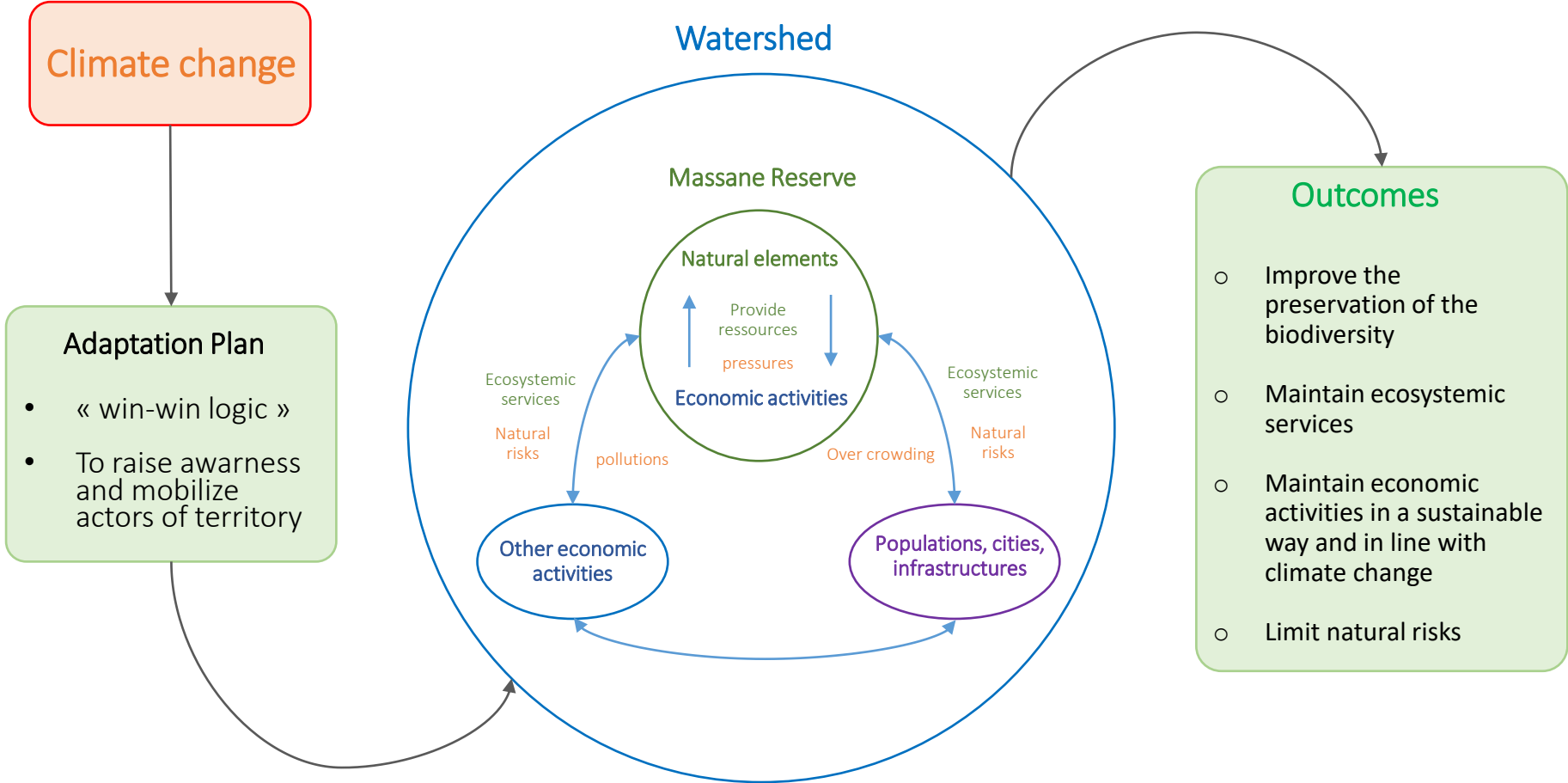
Mediterranean sea

-  Massane River
-  Reserve boundaries
-  Extensif pastoralism
-  Massive erosion forms



Massane Forest National Reserve

Systemic approach makes well adaptation to avoid the worst



Thank you for your attention

Kenzo Héas



Contact : kenzo.heas@espaces-naturels.fr

Coordinateur du projet



Contact : naturadapt-rnf@espaces-naturels.fr 03.80.48.91.00

Partenaires engagés dans le projet



Financeurs du projet



The NaturAdapt project has received funding from the LIFE Programme of the European Union