



NÁRODNÍ **PARK** BAYERISCHER WALD  
NATIONAL **PARK** ŠUMAVA



## Šumava and Bavarian Forest National Parks - thirty years of collaboration

Pavel Bečka

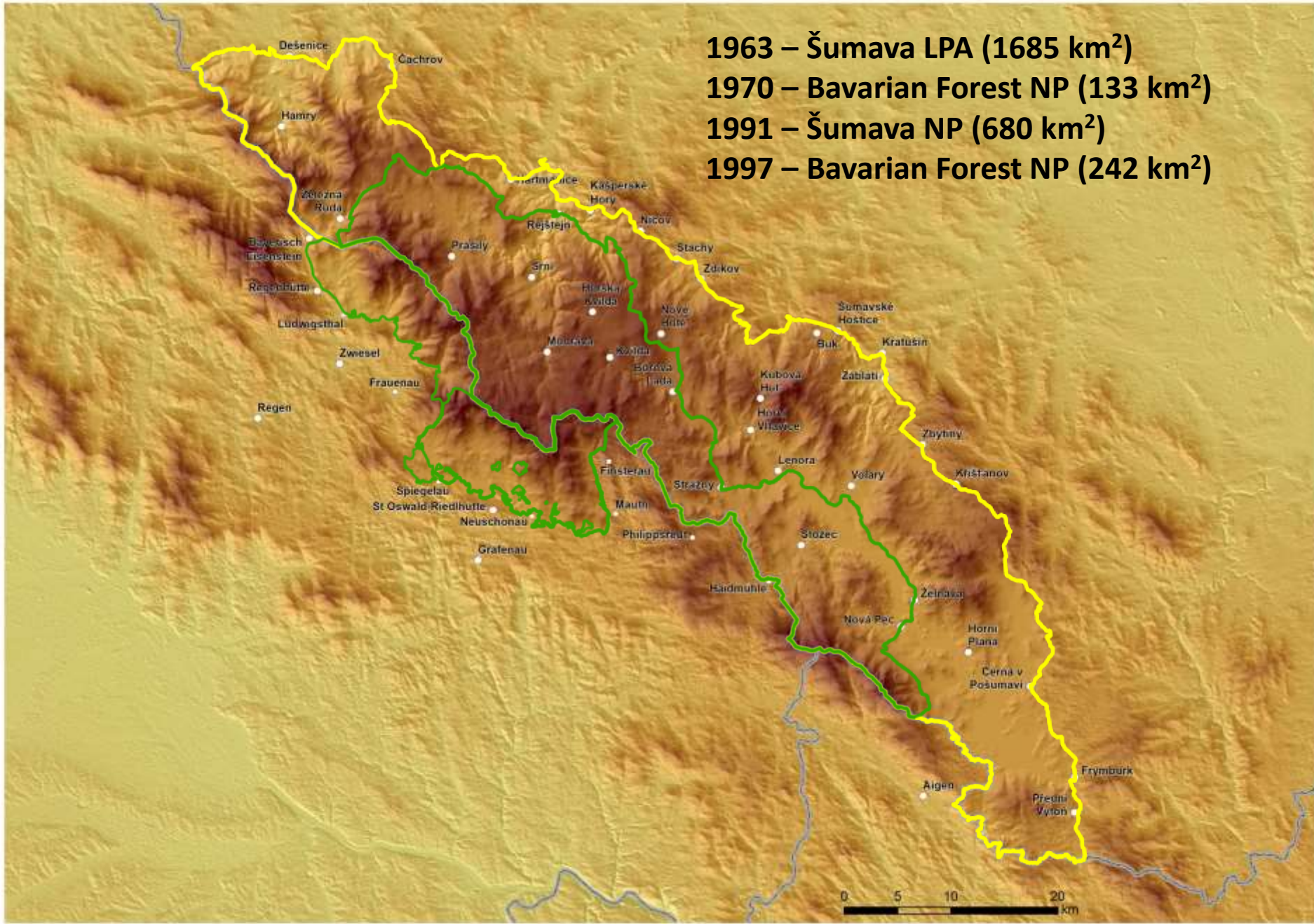
Šumava National Park Administration  
Bavarian Forest National Park Administration

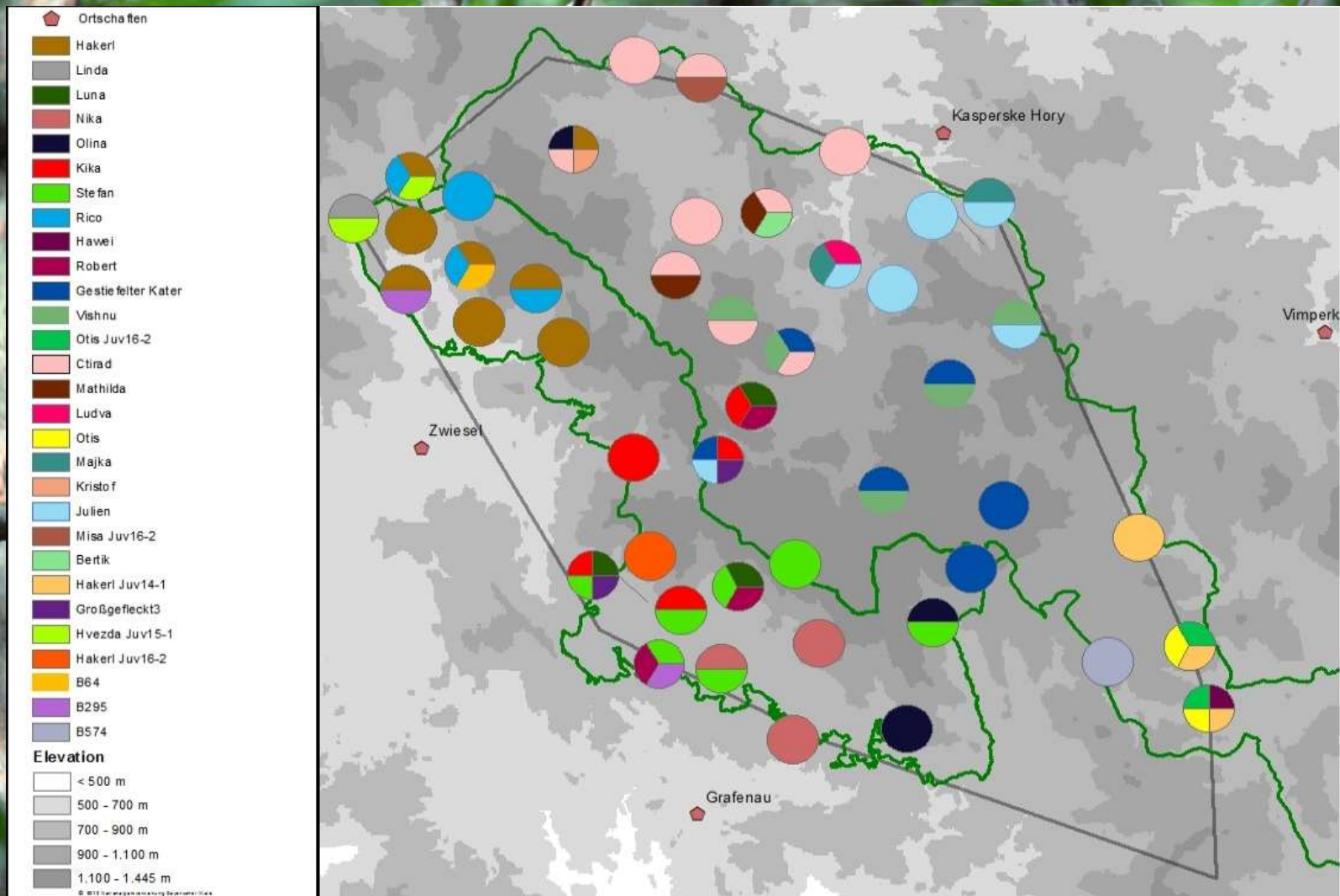
[pavel.becka@npsumava.cz](mailto:pavel.becka@npsumava.cz)

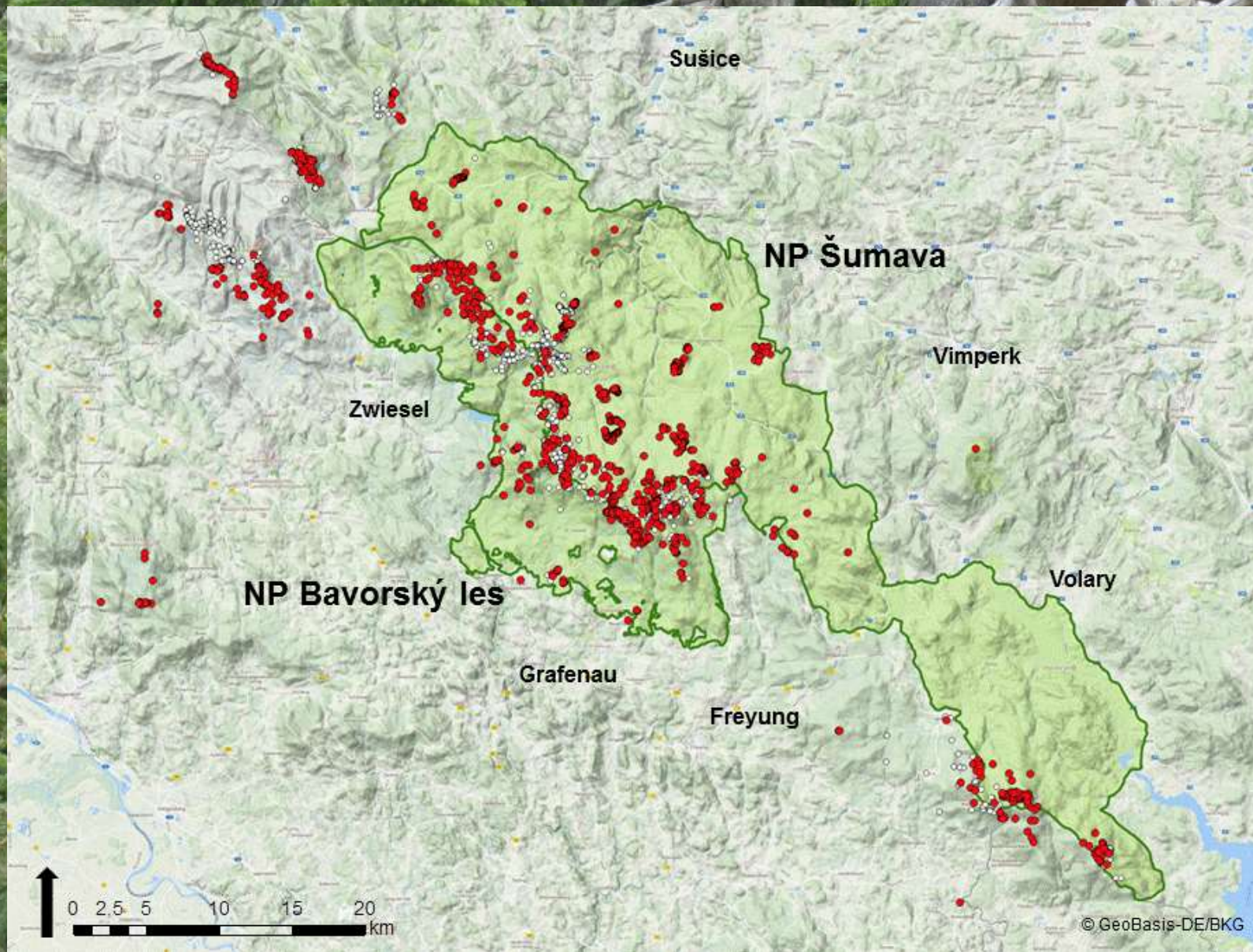
[pavel.becka@npv-bw.bayern.de](mailto:pavel.becka@npv-bw.bayern.de)



**1963 – Šumava LPA (1685 km<sup>2</sup>)**  
**1970 – Bavarian Forest NP (133 km<sup>2</sup>)**  
**1991 – Šumava NP (680 km<sup>2</sup>)**  
**1997 – Bavarian Forest NP (242 km<sup>2</sup>)**











22/11/2016 8:50 PM









European spruce bark beetle (*Ips typographus*)



© Dana Zývalová

© Marek Drha



# Transboundary cooperation



**Common Information Pavilion at the former Iron Curtain  
German-Czech border at Bučina/Buchwald  
Foto: Archiv H. Bibelriether**

# Daily work

- One employee who is employed in both administrations to coordinate the cooperation
- Multilingual staff, especially in the environmental education and research departments
- German und Czech speaking national park rangers
- Czech interns/students in the Bavarian Forest National Park Administration and German interns in the Šumava National Park Administration

# Environmental education projects

- Smaller projects for exchange of D-CZ school classes or groups
- Common field guides, books, brochures, calender
- Nature without borders - Living forest (deadwood brochure)



# Interreg projects

- Permanent staff for preparation of projects and their administration
- Project coordinators are employed for the duration of the project
- Experts from universities as project partners
- Experts as service providers
- Volunteers, for example for animal monitoring. Usually we have more volunteers on the German side, who then help with monitoring in Šumava National Park



**Europäische Union  
Evropská unie**  
Europäischer Fonds für  
regionale Entwicklung  
Evropský fond pro  
regionální rozvoj



**Ziel ETZ | Cíl EÚS**  
Freistaat Bayern –  
Tschechische Republik  
Česká republika –  
Svobodný stát Bavorsko  
2014 – 2020 (INTERREG V)



# LIFE-Projekt

- **TRANS-BOUNDARY RESTORATION OF MIRES FOR BIODIVERSITY AND LANDSCAPE HYDROLOGY IN SUMAVA AND BAVARIAN FOREST (2018-24)**
  - Šumava NP
  - Bund Naturschutz in Bayern
  - University of South Bohemia in České Budějovice
  - Bayerischer Wald NP
- **The total project budget is 5,845,002 €, the European Commission provides 60%**



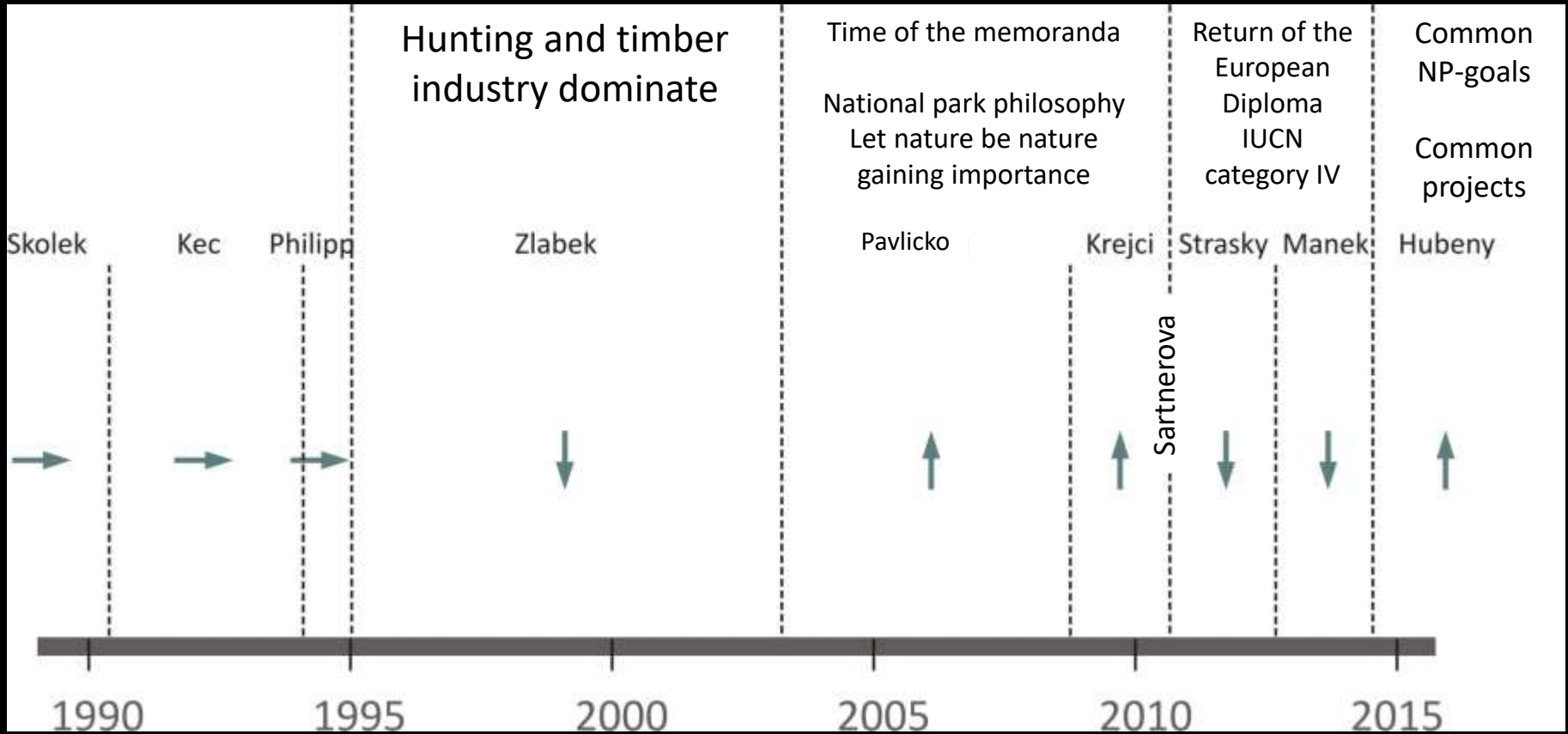
# Challenges

50

29

3

10



An aerial photograph of a forest landscape. The terrain is a mix of dense green coniferous trees and large, irregularly shaped areas of brown, dead or dormant trees. Several small, dark blue ponds are scattered throughout the forest, particularly in the lower-left and upper-middle sections. A thin, dark line, likely a stream or road, runs horizontally across the lower part of the image. The overall scene suggests a forest in a state of transition or recovery.

Thank you for  
your attention!