

Collaboration with conventional farmers at eye level

Upper Sûre Case Study

Martine Stoll

Upper Sûre Nature Park, LU

30.03.2021

Webinar Protected Areas and Conventional Agriculture:
opportunities and challenges for cooperation



Overview

- How the cooperation “LAKU” came to be
- Structure of the cooperation
- LAKU region
- Challenges and solutions
- Technical solutions for conventional farmers

The beginning

- 2012 public participation in the process of the creation of a new water protection area around the Upper Sûre lake to improve water quality
- Creation of working groups for different subject areas
→ WG Agriculture

→ **Good connection to the farmers due to the nature park!**

→ Agricultural counselling and Project “River contract”



Bottom-up approach

2012 bis 2015:

WG Agriculture:
Exchange between
Nature park / SEBES / Administrations /
agricultural counselors



2014:

Excursion Wahnbachtalsperre

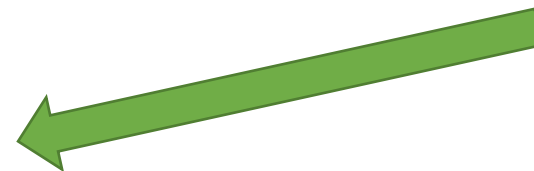


2015:

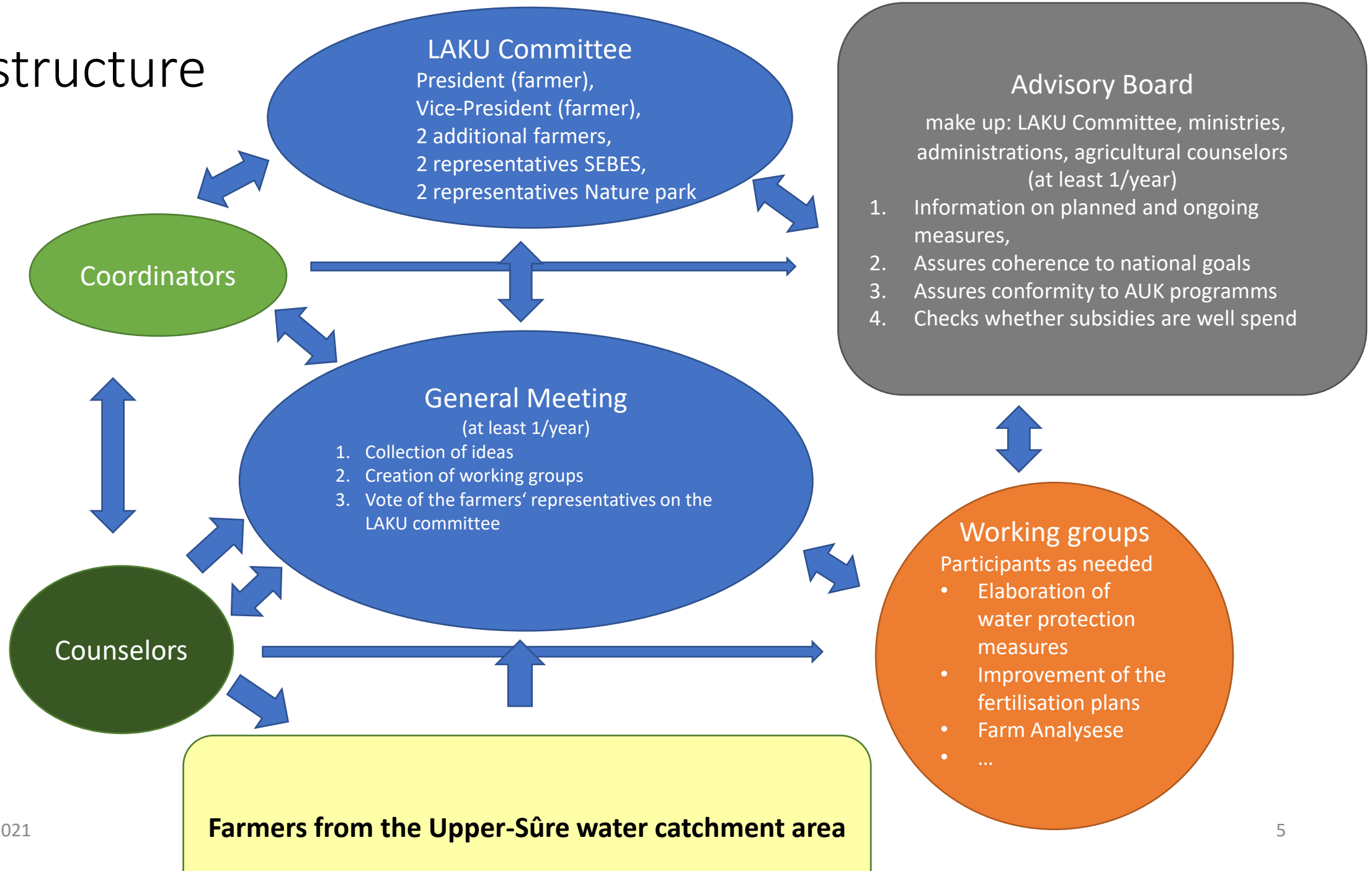
Setting up the cooperation agreement



2015 bis 2020:



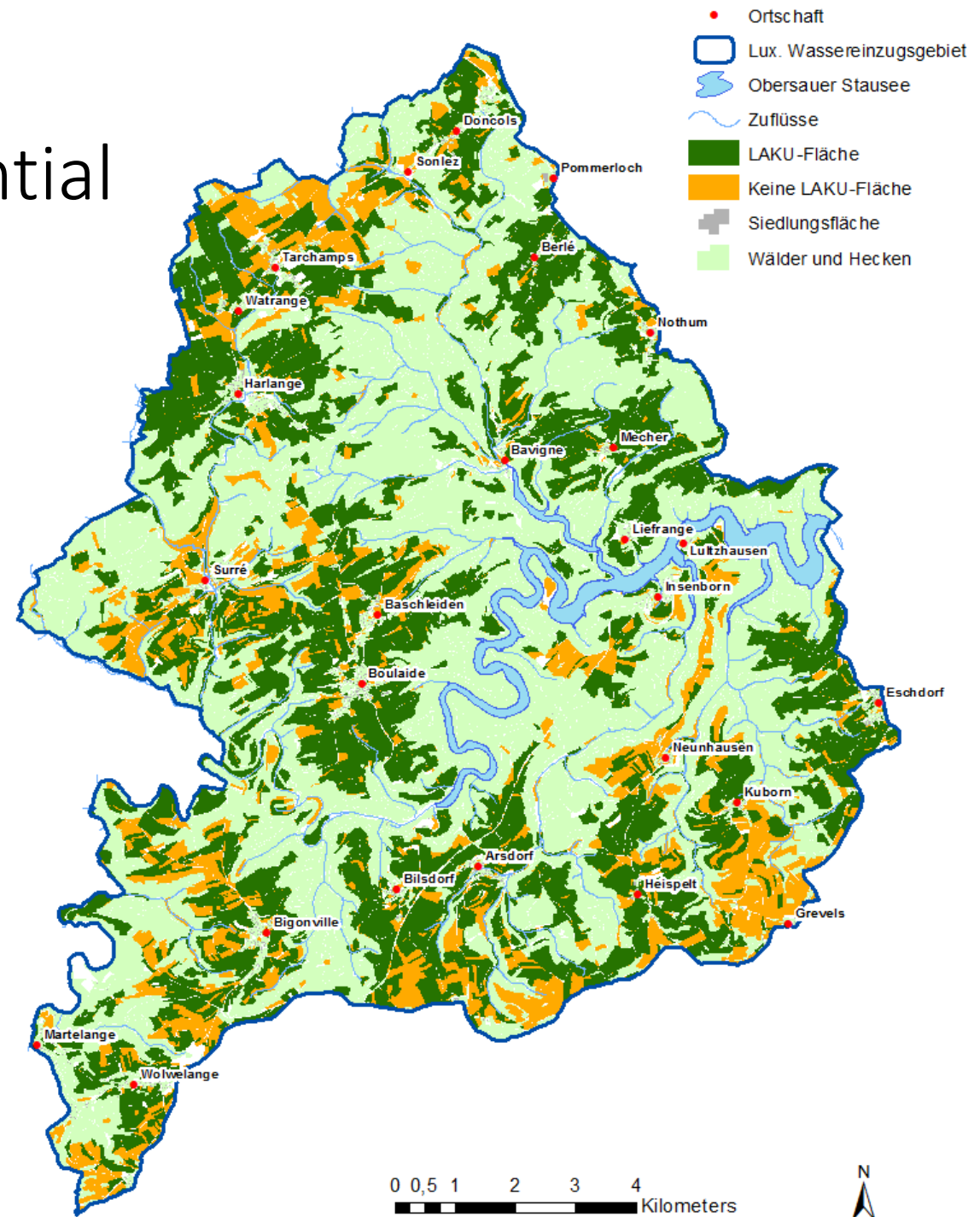
The structure



Members with lots of potential

2020

- Total agricultural surface: 6841 ha
- LAKU surface: 4931 ha (~72%)
 - of those 8% organically farmed
- Member farms: 89 / 185

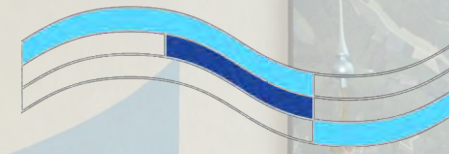


Challenges and solutions

- Different interests
 - Respect/openness to the interests of the other person
 - Opportunity to understand one another better
 - Define common goal
- Working at eye level with the farmers
 - all decisions of the committee are made unanimous
- Preventing contradictory measures
 - Protection of Water ↔ protection of Nature, e.g. planting of Miscanthus
 - Measures need to be specific and well thought through



SEBES



NATURPARK
ÖEWERSAUER

LAKU Committe

Challenges and solutions: **Resignation**

- August 2020 collective resignation of the 4 farmers from the LAKU Committee
- Farmers were disappointed and felt „to be at a dead end“
- High expectations towards LAKU → high pressure
- (Mis-)Communication played a major role
- Bottom-up approach was challenged but prevails
→ now in the process of defining LAKU 2.0

Participation of farmers

- Shake off all previous prejudices, openness to find solutions
- Meet at eye level at every level
- Keep administrative work to a minimum
- Discussions must be based on facts and arguments
- give farmers (middle-term) perspectives



Look at this, here's a Problem!

I think you are part of the solution. What are your ideas and what do you need to implement them?

Technical solutions for (conventional) farmers

Agricultural Contractors



Efficient management of manure

Strip-Till-Systems with RTK positioning

Counselling

Upgrading of field sprayers

Subsidies

Tyre pressure control system



Technical measure: Injection of slurry

- Injection of slurry into the soil → few outgassing / runoff → high nutrient efficiency
- Reduced input of slurry to obtain the same yield → less N-discharge into the water and the air
- Possible to increase Ammonium content by adding mineral fertilizer
 - less leaching
 - fewer drives across the field
- „Slurry is valued“, injection is also possible during drier periods → mineral fertilizers are being displaced → overall less nutrient import



Technical measure: weed regulation



Precision cultivator



Precision harrow



Hoe



Rotary harrow with vertical knives



Zasso X-Power

Technical measure: soil samples and analyse

Professional soil sampling with
contractor: boring rod mounted on jeep

- 60 cm deep / 2 horizons
- Analyse: Nmin, P, Mg, K, pH, Corg

→ Instrument in agricultural counselling: fertilisation plan

→ More information to work with for farmer

→ Information und evaluation tool for cooperation

→ Efficient fertilisation leads to N „leaching“ into the crops instead of into the water

Events

- Regularly host events to show and discuss with the farmers the technical solutions
- Seminars with international and national Experts
- Demonstration events at the field
 - Trials, methods, machinery
- Visits to member farms (conventional and organic)
 - Provoke objectiv exchange





Thanks