



# **Seminar-Dialogue 2021**

**DG Environment and EUROPARC Federation**

**1st of June 2021**

**Dutch-German Cross Border Nature park Maas-Swalm-Nette**



**Leo Reyrink  
André Claassen**

**Kapellerpoort 1  
6041 HZ Roermond  
Netherlands**





## Contents

- **Introduction and history**
- **Cross border projects**
- **Network of wetland habitats**







1965 Founding of the **German** Nature Park Schwalm-Nette as an association by four German districts



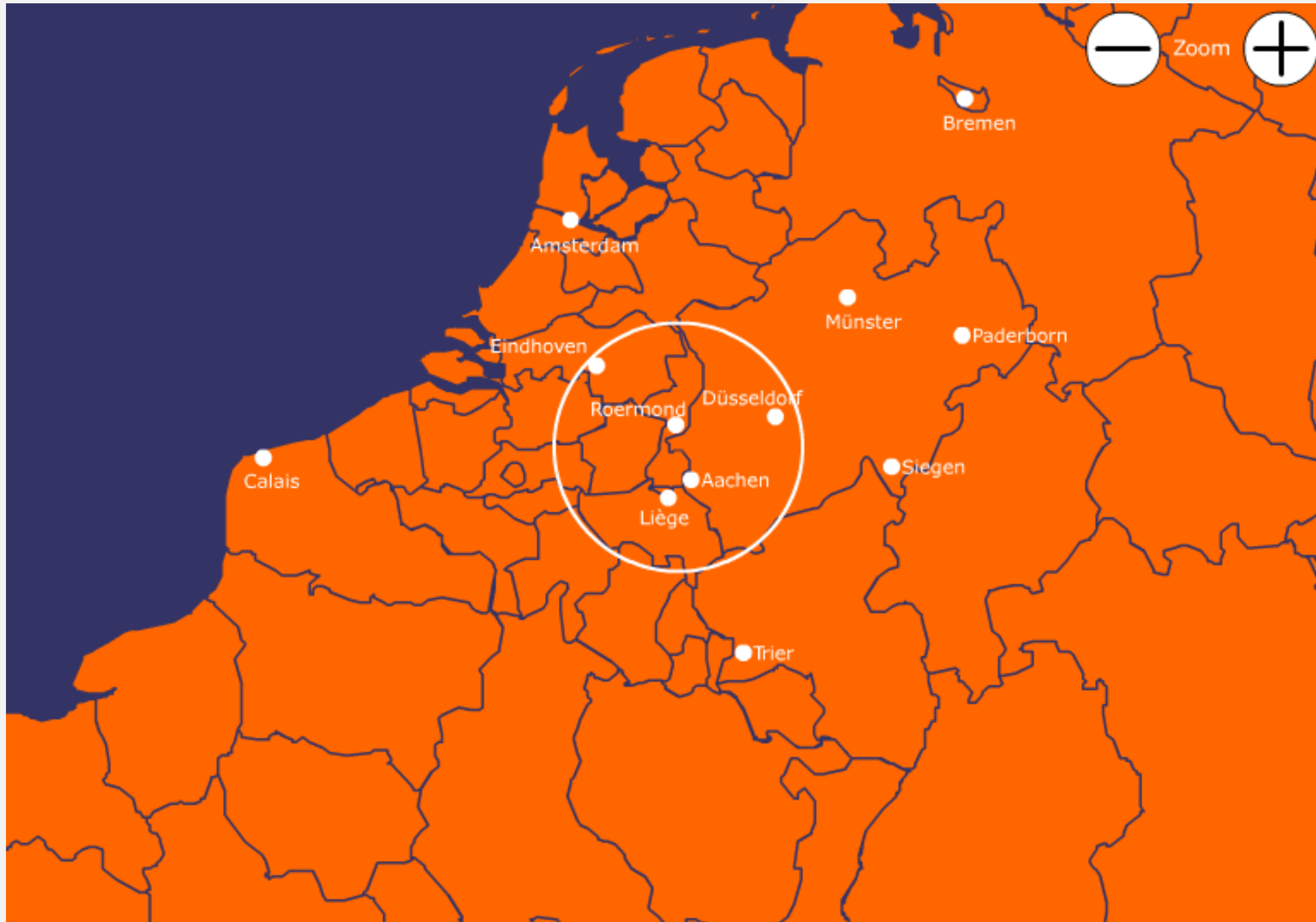
1976 Enlargement to **Dutch-German Cross Border Nature Park Maas-Swalm-Nette** by treaty between the Kingdom of the Netherlands and the federal state of Northrhine-Westfalia (management by **advisory board**)



2002 Foundation of the Dutch-German **cross border association** Maas-Swalm-Nette (**own office**)



2007 Certificate for high quality of cross border cooperation of the EUROPARC federation: **Transboundary Park**







The cross border park is a special purpose association by the German Nature Park Schwalm-Nette and 7 Dutch communities in the Province of Limburg

Size: 1200 km<sup>2</sup>

Inhabitants: ca. 390.000

Rivers: Maas, Nette, Niers, Roer/Rur/Swalm







## Characteristics

- Rivers, forests, lakes, heath land, moors and agricultural landscapes
- **10.000 ha NATURA 2000** German forests/rivers and Dutch national park De Meinweg
- Water plays an important role for recreation, tourism as well as water depending species
- Within a radius of 100 km a visitor potential of more than 7 million people
- Several places with culturally interesting historical buildings and sites







## The goals and aims of the cooperation

- Maintain and develop, reconnect nature and landscape
- Support and development of recreation and tourism
- Environmental education
- Support the Dutch and German cross border cooperation
- Create identification and awareness with the Cross Border Park Maas-Swalm-Nette

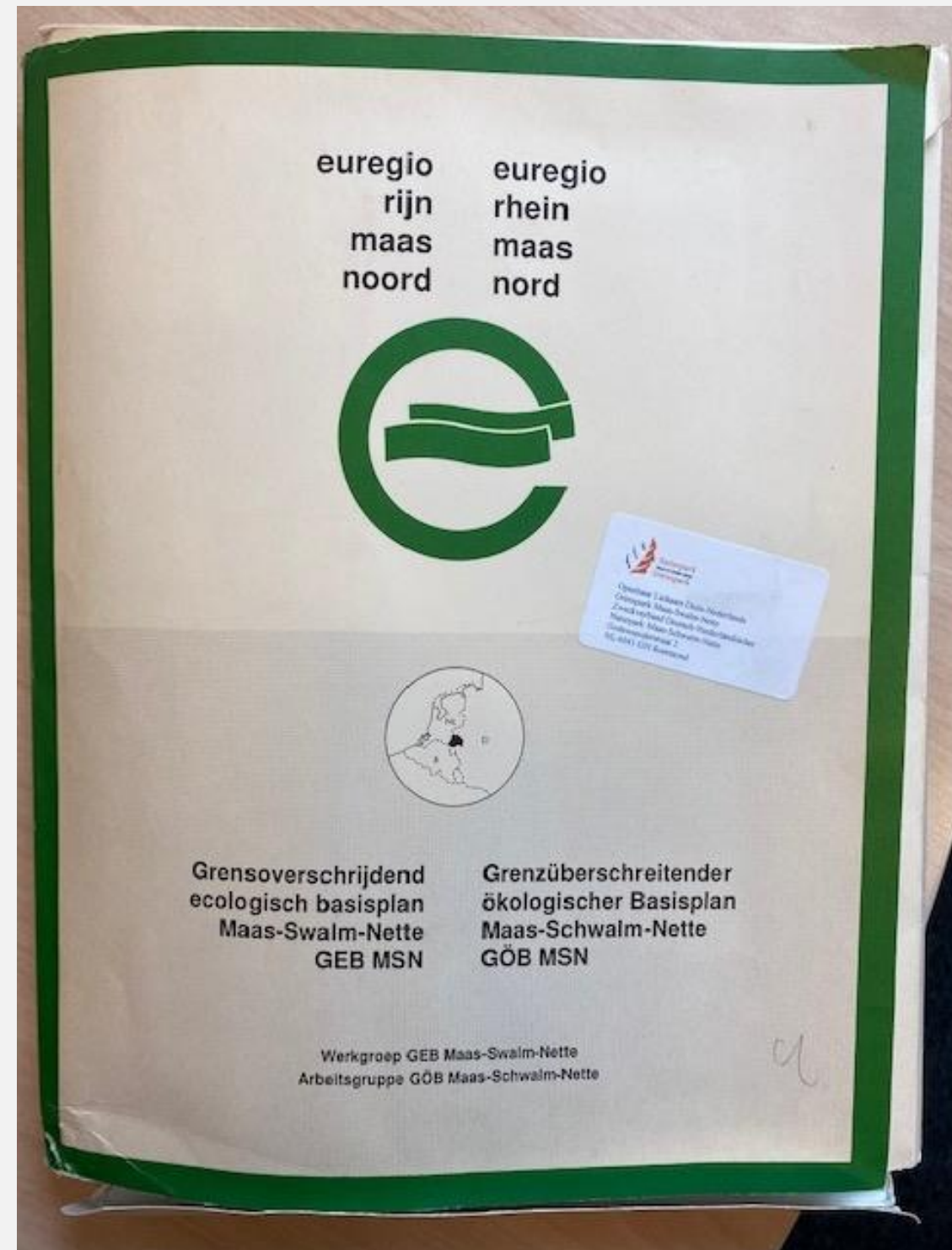




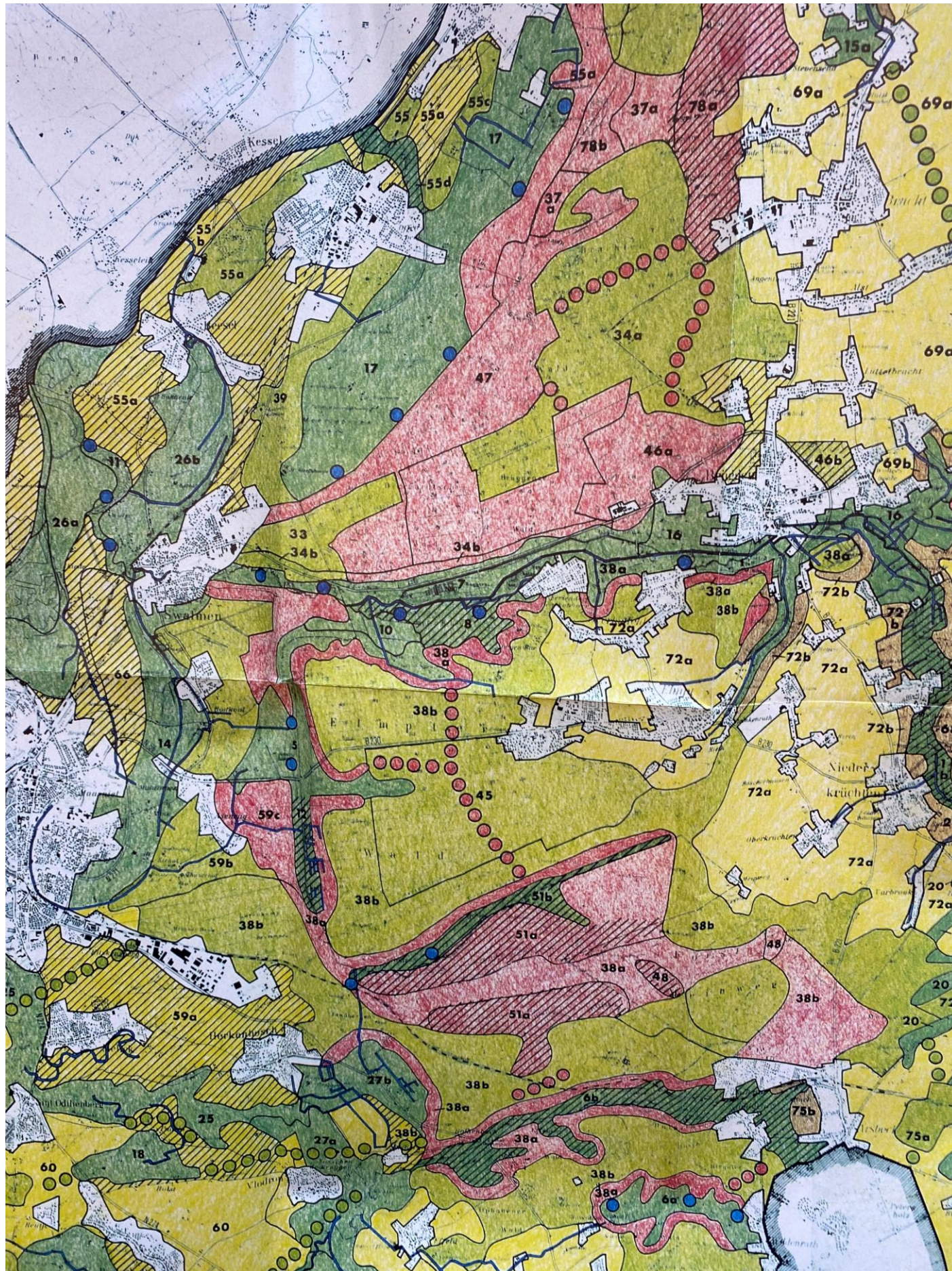


## Tasks of the office

- Planning, organisation and coordination of cross border projects (INTERREG)
- **Basis:** a 1994 through INTERREG I A financed cross border project:  
**Cross Border Ecological Vision**











INTERREG IIIA MSN in de picture	815.000
<b>INTERREG IIIA Ecological Network of Wetlands</b>	1.250.000
INTERREG IIIA Former II. WW Air base Venlo	90.000
Longdistance walking trail Maas-Nederrijnpad	57.000
INTERREG IVA National park region MeinWeg	950.000
INTERREG IVA P2P Projekt EcoTop MSN	38.000
INTERREG IVA Water.Walking.World	435.000
INTERREG IV A Natural waterborders	4.200.000
Network Green Border	1.600.010
Cultural history digital	2.400.000
INTERREG V A Nature and Forest fire protection	940.000



provincie limburg

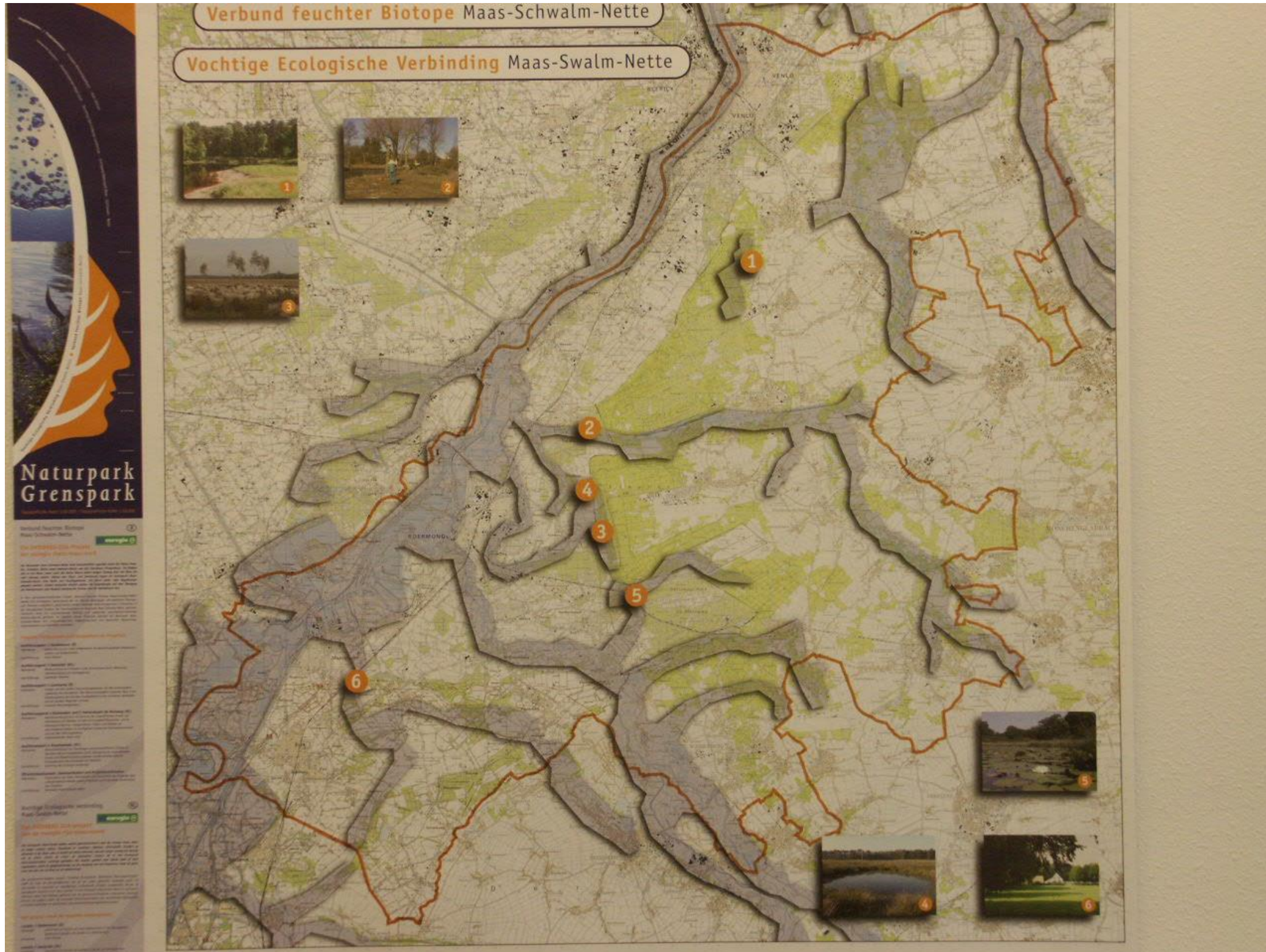


Ministerium für Wirtschaft, Energie, Industrie, Mittelstand und Handwerk des Landes Nordrhein-Westfalen





# Cross border wet ecological structure MSN





- 1 Restoration of three heather fens/bogs
- 2 Restoration of 8 small ponds (formal valley sites of the Swalm river)
- 4 Restoration of 4 ha of moorland by reduction of nutrients in former agricultural land near the border
- 3 Realisation of three ponds for special species protection/stepping stones near the border
- 5 Realisation of a species protection lake
- 6 Restoration of 16 ha of moorland by reduction of nutrients in former agricultural land combined with the realisation of 8 small pond in region Vlootbeek river

PR/Communication/Seminar















**Thanks for your attention!**

