



Transboundary Parks...following nature's design



TransParcNet Meeting 2021
***The contribution of the Transboundary Protected Areas
to the EU Green Deal***

Online - Thursday, 10th of June 2021

**Presentation and update about the EUROPARC
Transboundary Programme and the network**

Rolands Auzins & Stefano Santi, Co-chair EUROPARC TB Task Force

Nature has not borders



Transboundary Parks...following nature's design

The EUROPARC Transboundary Programme

is a

special methodology and certification system

to support mutual understanding, often between countries where history may have created mutual distrust or administrative barriers, and develop management tools to enable greater cooperative management.

Four elements of the system:

- *EUROPARC Basic Standards for transfrontier cooperation,*
- *verification process by external verifiers,*
- *certification as a "EUROPARC Transboundary Area",*
- *renewal of the Certificate every five years.*





Transboundary Parks...following nature's design



www.europarc.org/nature/transboundary-cooperation/

EUROPARC FEDERATION

Twitter Facebook LinkedIn YouTube Select Language

JOIN US Search

About Nature & People Sustainable Tourism Knowledge Hub Tools & Training Policy Natura 2000 Conference News Library

Nature & People

European Day of Parks

Park Management

Transboundary Cooperation

- Transboundary Parks Programme
- Discover our Transboundary Parks
- TransParcNet

Health and Well-being

Young People

Women in Protected Areas

Transboundary Cooperation

Landscape in Escaut Plaines Nature Park (BE) © Escaut Plaines Nature Park

Contact person:

**STEFANIA
PETROSILLO**

stefania.petrosillo@europarc.org



Transboundary Parks...following nature's design



Do you remember ?
Our **last TPNmeeting** was online
on December 9th 2020



Transboundary Parks...following nature's design



In January we prepared together with the Rete Italiana EGB (LP) and your kind support the **project "YOUTH AND NATURE, WITHOUT BORDER" for the financing of the Waldesian Church**

In the meantime, as a follow up of our 2020 TPN meeting, a specific Working Group began working on a **common project** idea to be financed for the benefit of the entire network

WG members

Pavel Bečka	Leo Reyrink
André Claassen	Stefano Santi
Pertti Itkonen	Riina Tervo
Daniele Piazza	

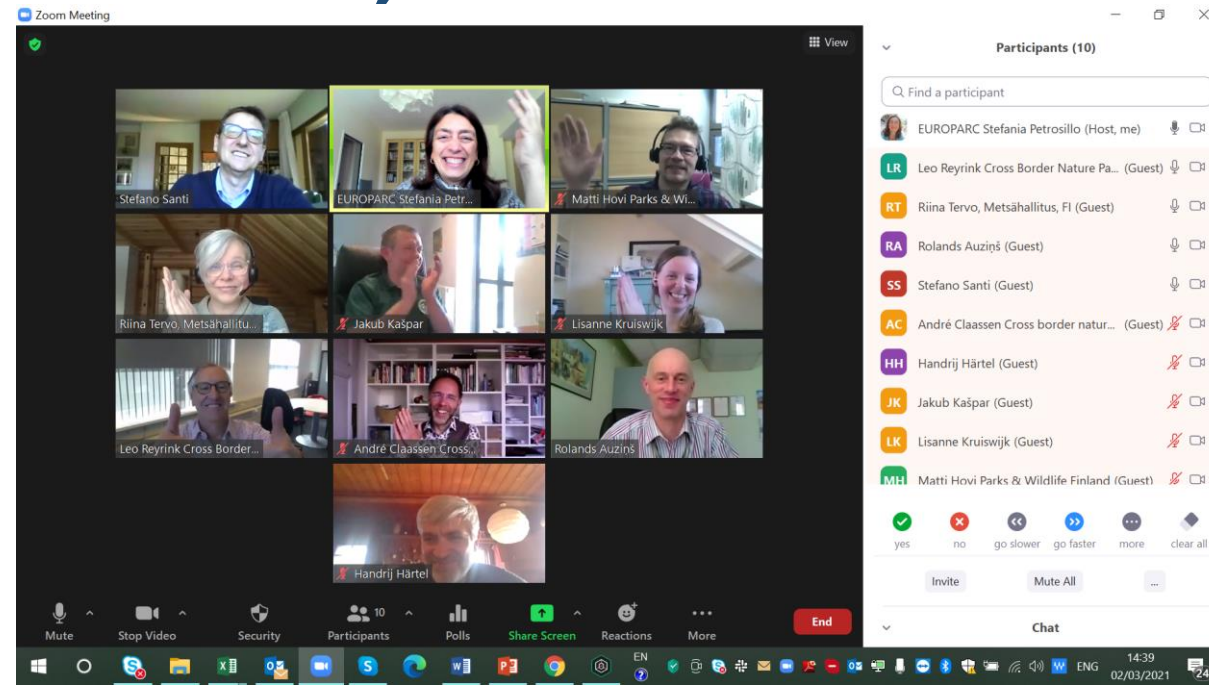
Supported by:

Stefania Petrosillo

Lisanne Krujswijk (Former Intern)



On March 2nd 2021 we had a **Task Force** meeting to discuss about projects initiatives, TransParcNet meeting 2021, webinars in other languages, recruitment, and Chair turnover



We also updated **TB strategy and Action Plan** in order to harmonize it with Europarc's general strategy and better target our next steps.

It includes 6 Categories of strategic activities:

1. Governance; 2. Communication; 3. Quality standards; 4. Enlargement; 5. Foreign policy; 6. Network activities

	work to be done
	needs attention and some work input
	doing well, flying high
?	not enough knowledge for defining the progress

SUMMARY ON ACTIVITIES	
Strategic	Communicational
2	8
16	10
14	6
0	5
32	29



Stefania with EUROPARC Spain organized one **webinar in Spanish– Portuguese to present the TB programme and to promote the participation in it.**

Another one in French is planned with EUROPARC Francophonie (*28th September, everyone welcome!*).

We also had **targeted meetings with some Parks who had shown interest in joining the TB programme**

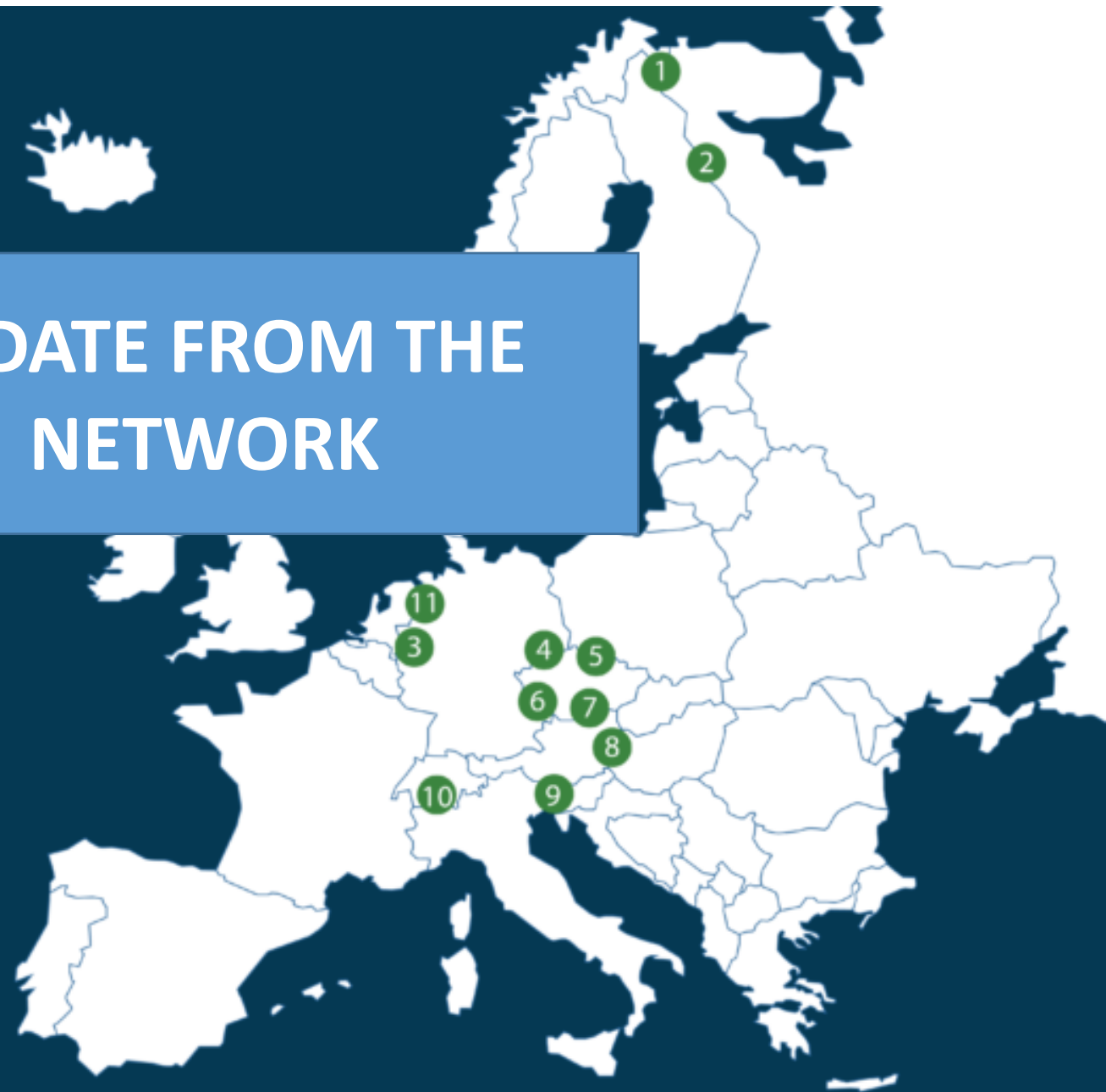


Thanks to the kind availability of a former Europarc intern, Elisa Tuillon, we had the opportunity to carry out a small research on how the members of our network **communicate the themes of the TB programme through their websites**

**And, of course, we organized today's TPN meeting
(hope you will enjoy it)**

UPDATE FROM THE NETWORK

- 1 Pasvik-Inari Trilateral Park (FI/NO/RU)
- 2 Oulanka-Paanajärvi Transboundary Parks (FI/RU)
- 3 Maas-Schwalm-Nette Nature Park (NL/DE)
- 4 Saxon-Bohemian Switzerland Transboundary Parks (DE/CZ)
- 5 Krkonoše and Karkonosze National Parks (CZ/PL)
- 6 Šumava and Bavarian Forest National Park (CZ/DE)
- 7 Podyjí-Thayatal Transboundary Parks (CZ/AU)
- 8 Neusiedler See-Seewinkel & Fertő-Hanság (AU/HU)
- 9 Julian Alps Transboundary Ecoregion (IT/SI)
- 10 Binntal Veglia Devero Transboundary Nature Park (IT/CH)
- 11 Internationaler Naturpark Bourtanger Moor - Veenland (DE/NL)





Transboundary Parks

EUROPARC

EUROPARC.ORG/TRANSBOUNDARY-COOPERATION

- 1 Pasvik-Inari Trilateral Park (FI/NO/RU)
- 2 Oulanka-Paanajärvi Transboundary Parks (FI/RU)
- 3 Maas-Schwalm-Nette Nature Park (NL/DE)
- 4 Saxon-Bohemian Switzerland Transboundary Parks (DE/CZ)
- 5 Krkonoše and Karkonosze National Parks (CZ/PL)
- 6 Šumava and Bavarian Forest National Park (CZ/DE)
- 7 Podyjí-Thayatal Transboundary Parks (CZ/AU)
- 8 Neusiedler See-Seewinkel & Fertő-Hanság (AU/HU)
- 9 Julian Alps Transboundary Ecoregion (IT/SI)
- 10 Binntal Veglia Devero Transboundary Nature Park (IT/CH)
- 11 Internationaler Naturpark Bourtanger Moor - Veenland (DE/NL)



Pasvik Inari Trilateral Park

Pasvik Zapovednik (RU):

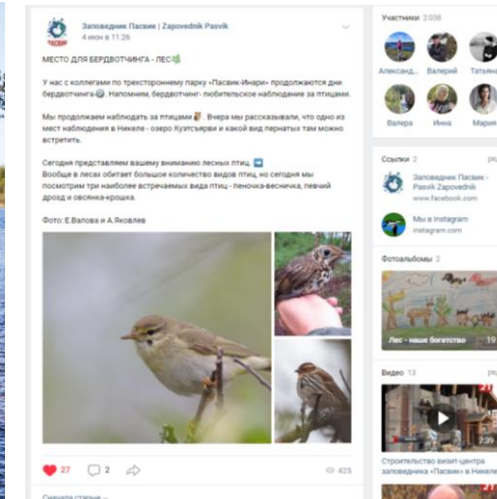
- Ecoweeek (April 2021) - common Pasvik-Inari TP themes: Brown bear monitoring, Ramsar convention, our joint projects: PAN, Aurora.
- Birdwatching trips (on Varlama Island, 06.06.2021) and publications in social media.

Metsähallitus (FI):

- Social media –campaign on bird watching for World Environment Day, 5.6.2021
- Extension and renovation of Visitor Centre Siida and renewal of its permanent exhibition continue. Name of the new exhibition is «These lands are our children».



Transboundary Parks...following nature's design 





**Øvre Pasvik
National Park**

Pasvik  Inari
Trilateral Park

Transboundary Parks...following nature's design 

Through the Kolarctic PAN project (2019-2022) the vision of a new Visitor Point in the outskirts of Øvre Pasvik National Park, is now being realized. In this PAN (Phenomena of the Arctic Nature) we cooperate amongst others with our partners in the Pasvik Inari Trilateral Park, to disseminate the values of the nature protected areas and support sustainable nature tourism.

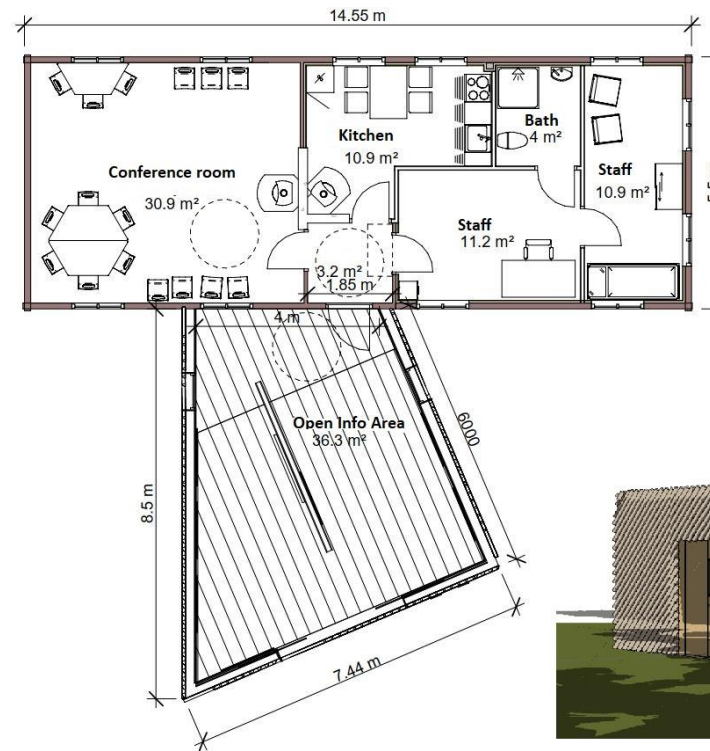


Figure: The main building will be a reused building originally for forestry workers, the drawings shows the new interior with a new open entrance room dedicated to information posters and screens.



Statsforvalteren i Troms og Finnmark

County Governor of Troms and Finnmark



Transboundary Parks...following nature's design



From the yearly bird registration in **Pasvik Nature Reserve** on Friday 4. June, 24 eager bird watchers identified 50 species and 192 individuals. Unusually good weather - 28°C.

Pasvik  Inari
Trilateral Park



Foto: Tor A.A. Simonsen



Foto: Paul Aspholm



Transboundary Parks

EUROPARC

EUROPARC.ORG/TRANSBOUNDARY-COOPERATION

- 1 Pasvik-Inari Trilateral Park (FI/NO/RU)
- 2 Oulanka-Paanajärvi Transboundary Parks (FI/RU)
- 3 Maas-Schwalm-Nette Nature Park (NL/DE)
- 4 Saxon-Bohemian Switzerland Transboundary Parks (DE/CZ)
- 5 Krkonoše and Karkonosze National Parks (CZ/PL)
- 6 Šumava and Bavarian Forest National Park (CZ/DE)
- 7 Podyjí-Thayatal Transboundary Parks (CZ/AU)
- 8 Neusiedler See-Seewinkel & Fertő-Hanság (AU/HU)
- 9 Julian Alps Transboundary Ecoregion (IT/SI)
- 10 Binntal Veglia Devero Transboundary Nature Park (IT/CH)
- 11 Internationaler Naturpark Bourtanger Moor - Veenland (DE/NL)





Picture: Pro Trout, Karelia CBC

OULANKA-PAANAJÄRVI TRANSBOUNDARY PARKS

- Transborder Karelia CBC collaboration project Pro Trout has installed six receivers of underwater acoustic radiosignals in Paanajärvi NP along the migration route of the transborder brown trout in April-June 2021.
- The receivers record the migration schedule, reach and survival of juvenile brown trout that were marked with tiny radiotransmitters in River Kuusinkijoki, Finland, in August 2020. The data recorded by the receivers will be used to improve the simulation model of the brown trout life cycle in Oulanka-Paanajärvi area.
- The model can be used to estimate sustainable levels of fishing mortality of brown trout in each side of the Finnish-Russian border. In Oulanka National Park, fishing of brown trout remains prohibited also in 2021. The prohibition has now been in place for seven years.

Picture: Paanajarvi National Park



Picture: Oulanka National Park



Transboundary Parks...following nature's design

OULANKA-PAANAJÄRVI TRANSBOUNDARY PARKS

- Winter is the best time of the year to transport materials to the park
- In the summer new duck boards are put on their place on hiking trails
- Above a picture from Paanajärvi NP and below from Oulanka NP



Transboundary Parks

EUROPARC

EUROPARC.ORG/TRANSBOUNDARY-COOPERATION

- 1 Pasvik-Inari Trilateral Park (FI/NO/RU)
- 2 Oulanka-Paanajärvi Transboundary Parks (FI/RU)
- 3 Maas-Schwalm-Nette Nature Park (NL/DE) 
- 4 Saxon-Bohemian Switzerland Transboundary Parks (DE/CZ)
- 5 Krkonoše and Karkonosze National Parks (CZ/PL)
- 6 Šumava and Bavarian Forest National Park (CZ/DE)
- 7 Podyjí-Thayatal Transboundary Parks (CZ/AU)
- 8 Neusiedler See-Seewinkel & Fertő-Hanság (AU/HU)
- 9 Julian Alps Transboundary Ecoregion (IT/SI)
- 10 Binntal Veglia Devero Transboundary Nature Park (IT/CH)
- 11 Internationaler Naturpark Bourtanger Moor - Veenland (DE/NL)





Cross Border Project Nature and Woodprotection
against fires didn't prevent a big fire last year.
But this spring after one year on some places the
heath is recovering rather well!



Leo Reyrynk is out of office, but you still might hear from him!



Long live the new designated captain André Claassen



Transboundary Parks

EUROPARC

EUROPARC.ORG/TRANSBOUNDARY-COOPERATION

- 1 Pasvik-Inari Trilateral Park (FI/NO/RU)
- 2 Oulanka-Paanajärvi Transboundary Parks (FI/RU)
- 3 Maas-Schwalm-Nette Nature Park (NL/DE)
- 4 Saxon-Bohemian Switzerland Transboundary Parks (DE/CZ)
- 5 Krkonoše and Karkonosze National Parks (CZ/PL)
- 6 Šumava and Bavarian Forest National Park (CZ/DE)
- 7 Podyjí-Thayatal Transboundary Parks (CZ/AU)
- 8 Neusiedler See-Seewinkel & Fertő-Hanság (AU/HU)
- 9 Julian Alps Transboundary Ecoregion (IT/SI)
- 10 Binntal Veglia Devero Transboundary Nature Park (IT/CH)
- 11 Internationaler Naturpark Bourtanger Moor - Veenland (DE/NL)





Massive barkbeetle attack in NLP Saxon Switzerland. More than half of the spruce (*Picea abies*) is absorbed (>2000 ha). The process is going on...



We are on the way back to wilderness – 75% of our area is nature dynamic area now



Transboundary Parks

EUROPARC

EUROPARC.ORG/TRANSBOUNDARY-COOPERATION

- 1 Pasvik-Inari Trilateral Park (FI/NO/RU)
- 2 Oulanka-Paanajärvi Transboundary Parks (FI/RU)
- 3 Maas-Schwalm-Nette Nature Park (NL/DE)
- 4 Saxon-Bohemian Switzerland Transboundary Parks (DE/CZ)
- 5 Krkonoše and Karkonosze National Parks (CZ/PL)
- 6 Šumava and Bavarian Forest National Park (CZ/DE)
- 7 Podyjí-Thayatal Transboundary Parks (CZ/AU)
- 8 Neusiedler See-Seewinkel & Fertő-Hanság (AU/HU)
- 9 Julian Alps Transboundary Ecoregion (IT/SI)
- 10 Binntal Veglia Devero Transboundary Nature Park (IT/CH)
- 11 Internationaler Naturpark Bourtanger Moor - Veenland (DE/NL)



ŠUMAVA AND BAVARIAN FOREST NATIONAL PARKS

For the first time in our national parks and in the Czech Republic, a wolf was caught and tagged. The telemetric collar is worn by a female wolf.



ŠUMAVA AND BAVARIAN FOREST NATIONAL PARKS

Two new INTERREG projects has started:

- Assessment of the risk of infecting wild animals with the invasive parasite large American liver fluke

Partners: LWF and our national park administrations

- Insects, fungi, lichen and mosses - promoting biodiversity and development of forest nature protection concepts in the Bohemian Forest

Goethe-University Frankfurt and our national park administrations





Transboundary Parks

EUROPARC

EUROPARC.ORG/TRANSBOUNDARY-COOPERATION

- 1 Pasvik-Inari Trilateral Park (FI/NO/RU)
- 2 Oulanka-Paanajärvi Transboundary Parks (FI/RU)
- 3 Maas-Schwalm-Nette Nature Park (NL/DE)
- 4 Saxon-Bohemian Switzerland Transboundary Parks (DE/CZ)
- 5 Krkonoše and Karkonosze National Parks (CZ/PL)
- 6 Šumava and Bavarian Forest National Park (CZ/DE)
- 7 Podyjí-Thayatal Transboundary Parks (CZ/AU) 
- 8 Neusiedler See-Seewinkel & Fertő-Hanság (AU/HU)
- 9 Julian Alps Transboundary Ecoregion (IT/SI)
- 10 Binntal Veglia Devero Transboundary Nature Park (IT/CH)
- 11 Internationaler Naturpark Bourtanger Moor - Veenland (DE/NL)



National Parks Thayatal (AT) & Podyjí (CZ)



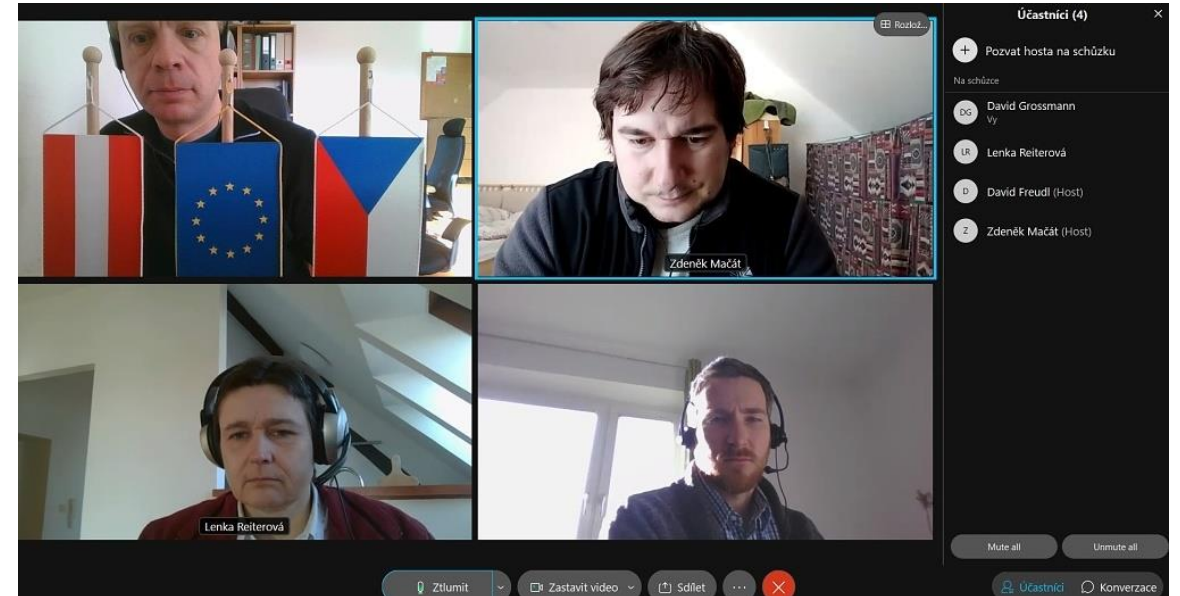
Transboundary Parks...following nature's design



While the borders looked like this: ↑



Our cooperation looked like this: ↓





.. and nevertheless both National Parks managed to further deepen their transboundary cooperation:

- Approval of a new project: “nATCZwork”
 - Language courses for employees
 - Employee exchanges
 - Joint excursions
 - Transboundary Networking
- Application of another new project: “Wo ist die Grenze? – Kde je Hranice?”
 - Visitor management and improvement of visitor infrastructure
- Organization of a joint anniversary conference „50 years together“
- Coordination in research and management
- Completion of the research project „Connecting Nature AT-CZ“
 - Transboundary biodiversity and habitat network research





Transboundary Parks

EUROPARC

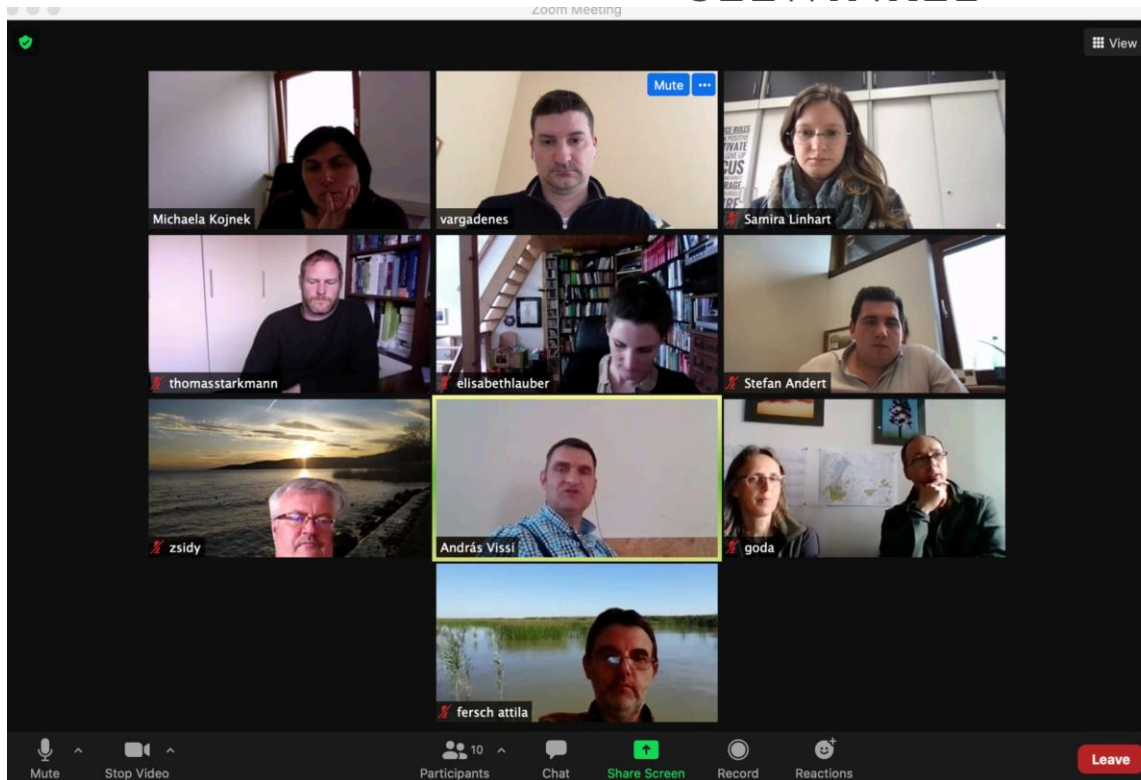
EUROPARC.ORG/TRANSBOUNDARY-COOPERATION

- 1 Pasvik-Inari Trilateral Park (FI/NO/RU)
- 2 Oulanka-Paanajärvi Transboundary Parks (FI/RU)
- 3 Maas-Schwalm-Nette Nature Park (NL/DE)
- 4 Saxon-Bohemian Switzerland Transboundary Parks (DE/CZ)
- 5 Krkonoše and Karkonosze National Parks (CZ/PL)
- 6 Šumava and Bavarian Forest National Park (CZ/DE)
- 7 Podyjí-Thayatal Transboundary Parks (CZ/AU)
- 8 Neusiedler See-Seewinkel & Fertő-Hanság (AU/HU) 
- 9 Julian Alps Transboundary Ecoregion (IT/SI)
- 10 Binntal Veglia Devero Transboundary Nature Park (IT/CH)
- 11 Internationaler Naturpark Bourtanger Moor - Veenland (DE/NL)





Transboundary Parks...following nature's design



Controlled and agreed implementation of the new logo for the 2 national parks and several online meetings.

Building of the common center for rangers of the transboundary national park on the Hungarian part of Lake Fertő is already in process. Opening late summer 2021.





Transboundary Parks

EUROPARC

EUROPARC.ORG/TRANSBOUNDARY-COOPERATION

- 1 Pasvik-Inari Trilateral Park (FI/NO/RU)
- 2 Oulanka-Paanajärvi Transboundary Parks (FI/RU)
- 3 Maas-Schwalm-Nette Nature Park (NL/DE)
- 4 Saxon-Bohemian Switzerland Transboundary Parks (DE/CZ)
- 5 Krkonoše and Karkonosze National Parks (CZ/PL)
- 6 Šumava and Bavarian Forest National Park (CZ/DE)
- 7 Podyjí-Thayatal Transboundary Parks (CZ/AU)
- 8 Neusiedler See-Seewinkel & Fertő-Hanság (AU/HU)
- 9 Julian Alps Transboundary Ecoregion (IT/SI)
- 10 Binntal Veglia Devero Transboundary Nature Park (IT/CH)
- 11 Internationaler Naturpark Bourtanger Moor - Veenland (DE/NL)



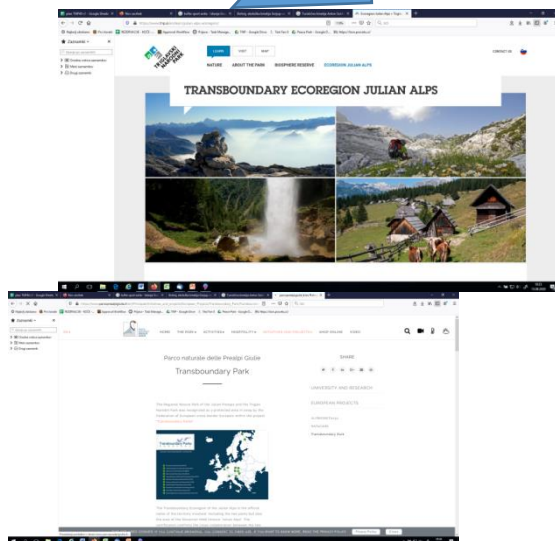


Transboundary Parks...following nature's design

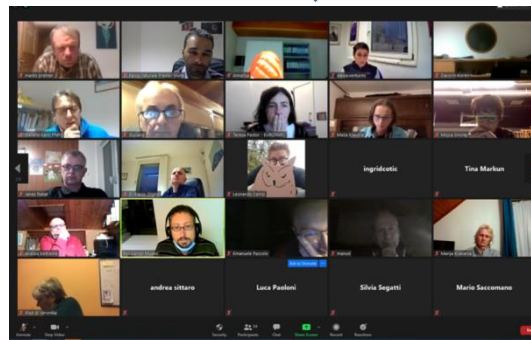


TRANSBOUNDARY ECOREGION JULIAN ALPS

NEW INFO ON WWW AND
REPRINT OF TB LEAFLETS



ECST ECOREGION
JULIAN ALPS FORUM
OCTOBER 2020



NEWSPAPER FOR COMMUNITY OF SCHOOLS
JULIAN ALPS WITH TB MAP



Transboundary Parks
EUROPARC

EUROPARC
Sustainable Tourism
in Protected Areas

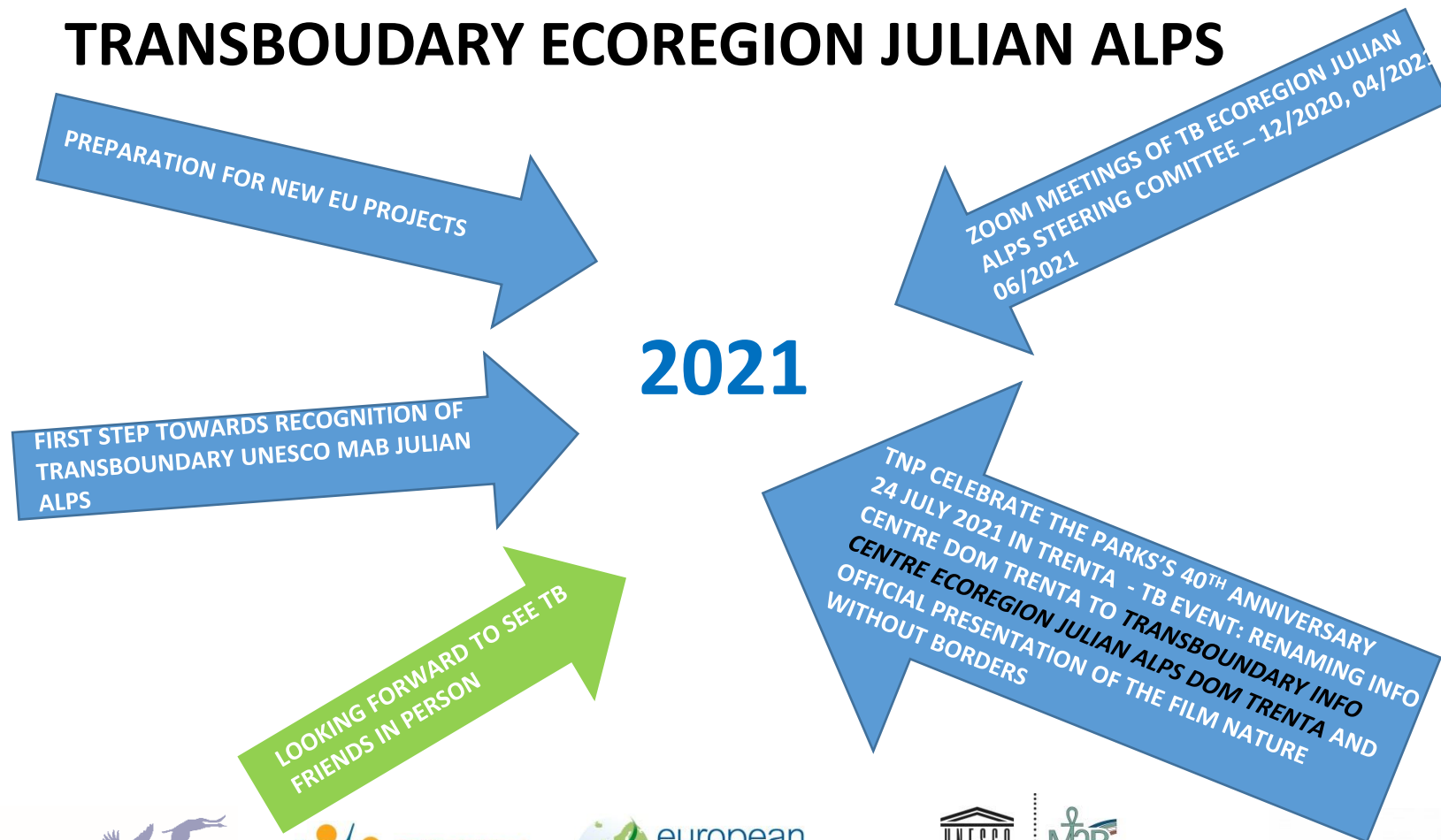
European
greenbelt

UNESCO
United Nations
Educational, Scientific and
Cultural Organization

MAB
Julian Alps
Biosphere Reserve since 2003
Man and the Biosphere Programme

JULIJSKE ALPE
TRIGLAVSKI NARODNI PARK

TRANSBOUNDARY ECOREGION JULIAN ALPS





Transboundary Parks

EUROPARC

EUROPARC.ORG/TRANSBOUNDARY-COOPERATION

- 1 Pasvik-Inari Trilateral Park (FI/NO/RU)
- 2 Oulanka-Paanajärvi Transboundary Parks (FI/RU)
- 3 Maas-Schwalm-Nette Nature Park (NL/DE)
- 4 Saxon-Bohemian Switzerland Transboundary Parks (DE/CZ)
- 5 Krkonoše and Karkonosze National Parks (CZ/PL)
- 6 Šumava and Bavarian Forest National Park (CZ/DE)
- 7 Podyjí-Thayatal Transboundary Parks (CZ/AU)
- 8 Neusiedler See-Seewinkel & Fertő-Hanság (AU/HU)
- 9 Julian Alps Transboundary Ecoregion (IT/SI)
- 10 Binntal Veglia Devero Transboundary Nature Park (IT/CH)
- 11 Internationaler Naturpark Bourtanger Moor - Veenland (DE/NL)





Joint promotion and cross-marketing initiatives
(according to COVID restrictions)
(Binntal and Veglia Devero Transboundary Parks @Ernen Market, CH)



Mutual exchange and on – field learning initiatives (Trans Park Guides @ Alpe Veglia, IT)





LANDSCHAFTSPARK
BINNTAL



Transboundary Parks...following nature's design



Shared project management and development (Interreg IT – CH “Mineralp”)



Constant coordination, development and follow up (Steering Group on-line meetings)

mar, 25 mag

10:00 AM - 11:00 AM

Riunione LPB-EGAPO

ID riunione: 938 3471 3146



Transboundary Parks

EUROPARC

EUROPARC.ORG/TRANSBOUNDARY-COOPERATION

- 1 Pasvik-Inari Trilateral Park (FI/NO/RU)
- 2 Oulanka-Paanajärvi Transboundary Parks (FI/RU)
- 3 Maas-Schwalm-Nette Nature Park (NL/DE)
- 4 Saxon-Bohemian Switzerland Transboundary Parks (DE/CZ)
- 5 Krkonoše and Karkonosze National Parks (CZ/PL)
- 6 Šumava and Bavarian Forest National Park (CZ/DE)
- 7 Podyjí-Thayatal Transboundary Parks (CZ/AU)
- 8 Neusiedler See-Seewinkel & Fertő-Hanság (AU/HU)
- 9 Julian Alps Transboundary Ecoregion (IT/SI)
- 10 Binntal Veglia Devero Transboundary Nature Park (IT/CH)
- 11 Internationaler Naturpark Bourtanger Moor - Veenland (DE/NL)



Hiking Without Borders 400km International Hiking Trail System

Completion of our 400km cross boarder hiking trail system on May 2021

Intensive coordination and close cooperation between nature conservation and tourism

Only when people see and experience what we protect they can gain an understanding of nature and our work



Digital Information-Points We Explain The Secret Behind The Obvious

Establishment of a network of digital information points in the landscape

Explaining nature and culture of the region

Small information signs with QR code: easy to find, but not disturbing the beauty of the landscape

Information can be accessed at any time via the internet

Bilingual and cross-border



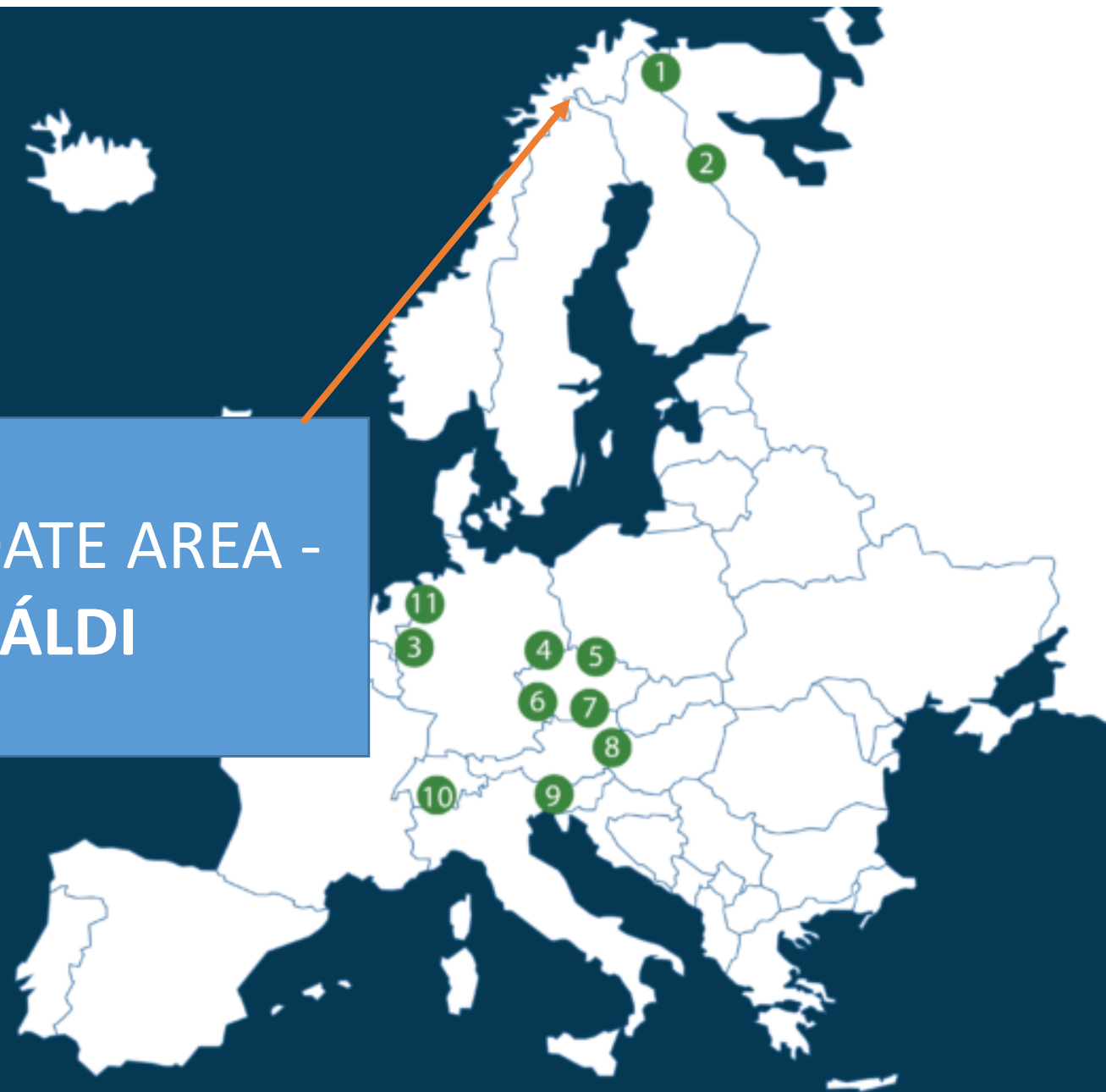
Urstromtal

Beekdal



CANDIDATE AREA - HÁLDI

- 1 Pasvik-Inari Trilateral Park (FI/NO/RU)
- 2 Oulanka-Paanajärvi Transboundary Parks (FI/RU)
- 3 Maas-Schwalm-Nette Nature Park (NL/DE)
- 4 Saxon-Bohemian Switzerland Transboundary Parks (DE/CZ)
- 5 Krkonoše and Karkonosze National Parks (CZ/PL)
- 6 Šumava and Bavarian Forest National Park (CZ/DE)
- 7 Podyjí-Thayatal Transboundary Parks (CZ/AU)
- 8 Neusiedler See-Seewinkel & Fertő-Hanság (AU/HU)
- 9 Julian Alps Transboundary Ecoregion (IT/SI)
- 10 Binntal Veglia Devero Transboundary Nature Park (IT/CH)
- 11 Internationaler Naturpark Bourtanger Moor - Veenland (DE/NL)



Overview

The Háldi area not yet confirmed as TBA. But, work in progress to prepare if we are accepted.

Reports and documents of development project (Interreg) concluded 31th of May. Some work still to be concluded. Waiting for borders to open.

Joint Management Board established. First meeting in Teams 15.01.21. Cooperation plan and Action plan accepted. Second meeting planned in August.

Group of stakeholders will be invited to meeting during 2021.

Common Information Film – in 2021 only available in visitor centres – and for you. [Please use this link](#). (Limited link Vimeo).



Coordinated Háldi Area information in the web sites of Metsähallitus and Reisa NP.

<https://www.nationalparks.fi/halditransboundaryarea>

<https://reisanasjonalpark.no/en/haldi-transboundary-area/>

Other information service for the visitor centres – [info screen](#).



Transboundary Parks...following nature's design



Working to establish common basemap for the Håldi area and the Nordkalotten hiking trail. Takes time.....



Fjellrev – forvaltning og bevaring mellom Norge, Sverige og Finland

Nasjonalt parkstyret for Reisa nasjonalpark - Reisa Metsähallitus har etablert et formelt samarbeid mellom verneområdene som ligger mellom Kilpisjärvi og Reisa np - Ráisdouttarháldi lvo.

Et tiltak i samarbeidet er "deling av informasjon/ besøkforvaltning."

Vinteren 2021 ble det satt ut fjellrev i Reisa np. Det kom ut av samarbeidet mellom forvaltningen og de bevaringstiltakene som gjøres på begge sidene av grensen. Arbeidet som gjøres i Sverige sør for Kilpisjärvi.

Vi inviterer derfor nå til et lite seminar om dette tema, med fokus på deling av informasjon. Invitasjonen er sendt til forvaltningsmyndighetene for verneområdene i regionen og forvaltningspartnere knyttet til artsforvaltning herunder Statsforvalteren i Troms og Finnmark, Statens naturoppsyn, Statskog/Fjelltjenesten, Miljødirektoratet, Länstyrelsen og Metsähallitus. Denne invitasjonen kan sendes videre til andre relevante partnere hvis det er nødvendig.

Mountain Fox – management and conservation in the border areas between Norway, Sweden and Finland

The management authorities of Reisa National Park and Metsähallitus have established a formal cooperation which aims for strengthening the management of the protected areas Käsivarsi wilderness area and Reisa NP.

One common objective at this stage is "shearing of information" which is relevant for management including visitor management.

During 2021 there were placed out Mountain Fox in Reisa NP by Miljødirektoratet and NINA. From that it evolved a need to know more of the issues regarding the management and conservation actions for Fjellrev in this border region.

This invitation goes to both managers of protected areas and also management partners including representatives from County governor in Troms and Finnmark, State supervision authorities (SNO), Länstyrelsen and Metsähallitus.

Info-session for specialist, researchers and managers. Mountain Fox conservation and management. 19 participants.

PROGRAM (Norsk/Svensk tid)

Kl 12:00 – 12:15	Welcome v/ Rune Benonisen.
Kl 12:15 – 12:30	Presentations of participants. Cooperation on management of protected areas in Håldi
Kl 12:30 – 12:50	Monitoring and practical conservation actions in Finland v/ Tuomo Ollila
Kl 13:00 – 13:15	BREAK
Kl 13:15 – 13:30	Conservation of the Arctic Fox, status and future prospects. v/ Nina E. Eide, NINA
Kl 13:30 – 13:50	Arctic Fox issues Norway v/ Karen Lone, Miljødirektoratet
Kl 13:50 – 14:00	PAUSE
Kl 14:00 – 14:25	Felles Fjellrev Nord II – Project objectives & conservation measures v/ David Bell, Länstyrelsen
Kl 14:25 – 15:00	Comments and questions. Future actions and cooperation?



<https://www.nina.no/Naturmangfold/Fjellrev>

3. februar 2021

Nye fjellrever skal sprengre grenser

Tolv valper er satt ut for å lage nye revestreker i det gamle fjellrevområdet Reisa Sør. Håpet er at fjellrevene både skal etablere seg selv og bli grenseløst til andre fjellrevområder.



Internationaler Naturpark Bourtanger Moor - Veenland (DE/NL)