



Community Involvement

EUROPARC 2021

Who are we?

- Registered Social Landlord, established September 2008 as the first LSVT in North Wales
- Over 4000 homes in the county of Conwy
- Invested £30m to attain Welsh Housing Quality Standard by 2012
- Employ 170 staff with turnover of £20M
- Committed to deliver Environmental Improvements across our portfolio

Our approach to regeneration

Site selection based on approved methodology

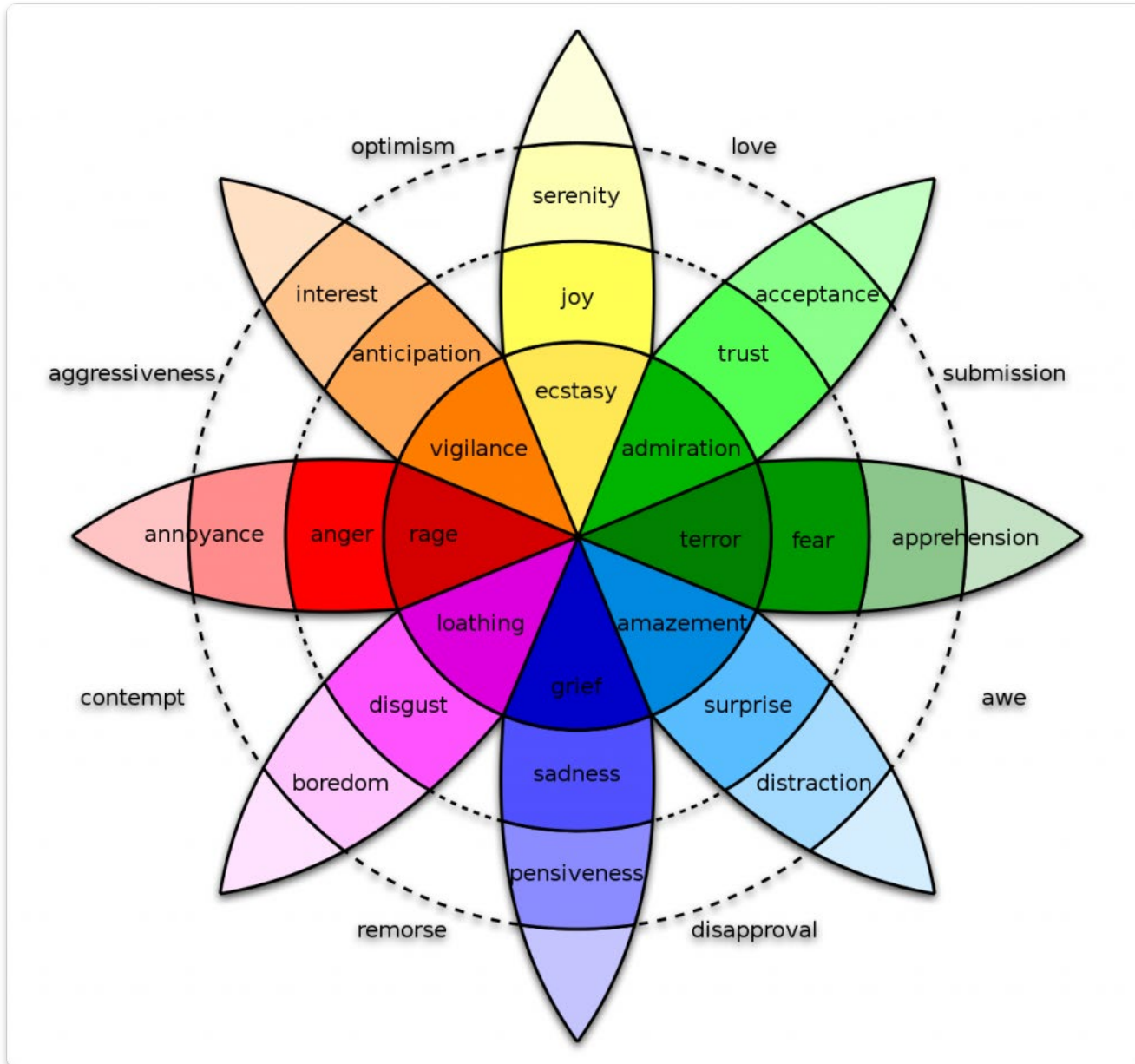
- Functionality
- Play provision
- Habitat creation
- Biodiversity
- SuDS
- Skills & Employment
- Local identity and Placemaking



Peulwys & Tre Cwm Estates



Plutchik's Model of Emotions

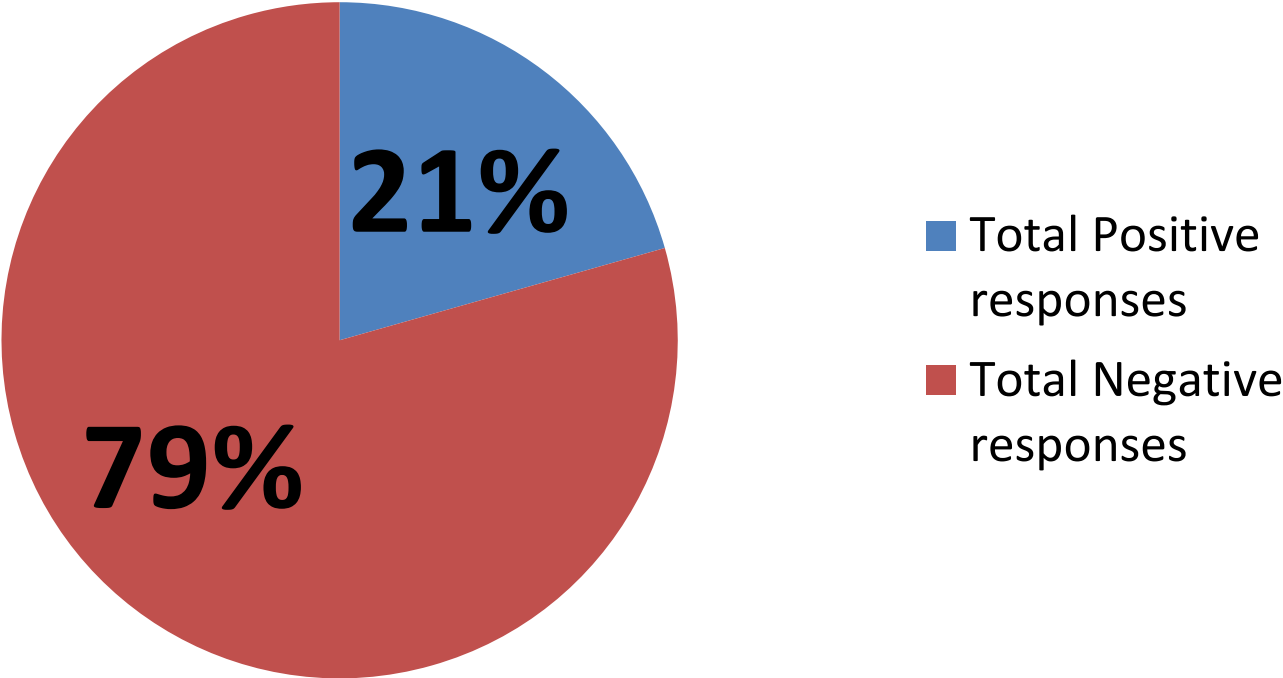


Community Consultation



Consultation Results

Emotional Response (All stations)

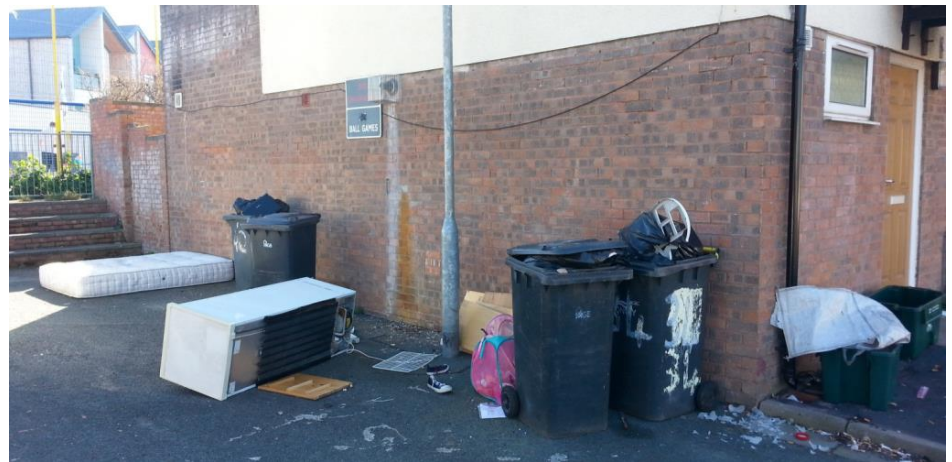


Community Aspirations

Better play for children

Enhanced green spaces

A cleaner environment



Involving the community

- **Initial consultation** (Aspirations and Design Brief)
- **Community Feedback** (Have we got it right?)
- **Create “Friends of...” group** (to keep dialogue open)
- **Engage with local school** (Align activities with curriculum)
- **Community event days** (Spring bulb planting, woodland creation..)
- **Economic benefits** (Making investment go further)
 - Training opportunities (Level 1 Horticulture)
 - Employment opportunities (Local labour built into contract)

Involving the next generation



Carreg Peulwys Stone

Carreg galch yw 'Carreg Peulwys' sy'n pwysio dros 4 tunnell! Pfurfwyd y garreg yn wreiddiol ar wlaŵ moroedd trofannol tua 300-350 miliwn mlynedd yn ôl. Roedd hyn mewn amser pan oedd Cymru (a Pharc Peulwys) wedi'u lleoli yn ymyl y cyhydedd fel rhan o gyfandir mawr eang o'r enw Pangea. O ganlyniad, gellir dod o hyd i amrywiaeth o ffosilau morol gwahanol o fewn y garreg.

Mae 'Carreg Peulwys' wedi'i chloddio o'r chwarel garreg galch llwyd olaf sy'n dal i weithredu ar Ynys Môn. Bu'r chwarel ddarparu'r cerrig a'i defnyddwyd wrth adeiladu pontydd Menai a Britannia rhwng 1819 a 1850. Dewiswyd y garreg yn ofalus er mwyn adlewyrchu treftadaeth gyfoethog leol chwarel garreg galch yn yr ardal, ac mae'n dathlu cwblhad y gwaith adfywio arngycheddol ym Mharc Peulwys ym mis Mai 2014.

Mae'r arysgrif yn seiliedig ar ymchwil gan ddisgyblion o Ysgol Tan Y Marian.

The 'Peulwys Stone' is a single block of limestone and weighs over 4 tonnes! It was originally formed 300-350 million years ago on the bed of a tropical sea. This was at a time when Wales (and Parc Peulwys) resided near the equator as part of a global supercontinent known as Pangea. As a result, this stone will be filled with hundreds of different marine fossils. The 'Peulwys Stone' comes from the last remaining grey limestone quarry still in operation on the Isle of Anglesey. The quarry provided stone to help construct both the Menai and Britannia bridges between 1819 and 1850. This stone has been carefully selected to reflect the rich local heritage of limestone quarrying in this area, and celebrates the completion of the Parc Peulwys environmental regeneration works by Caerfeli Conwy in May 2014.

This inscription was compiled based on research by pupils of Ysgol Tan Y Marian.



Skills & Employment





**Community Woodland
1600 trees planted by
volunteers**



SWN-Y-DON



PARC
PEULWYS



Natural Play



Natural Play





Creu cymunedau i fod yn falch ohonynt
Creating communities to be proud of

Questions?



Diolch / Thank you