

# EUROPARC WEBINAR

16/11/2021

**Creating bee-friendly cities.**  
Setting the scenes

**Etienne Aulotte**

GREEN SPACES DIVISION  
NATURE & AGRICULTURE DEVELOPMENT

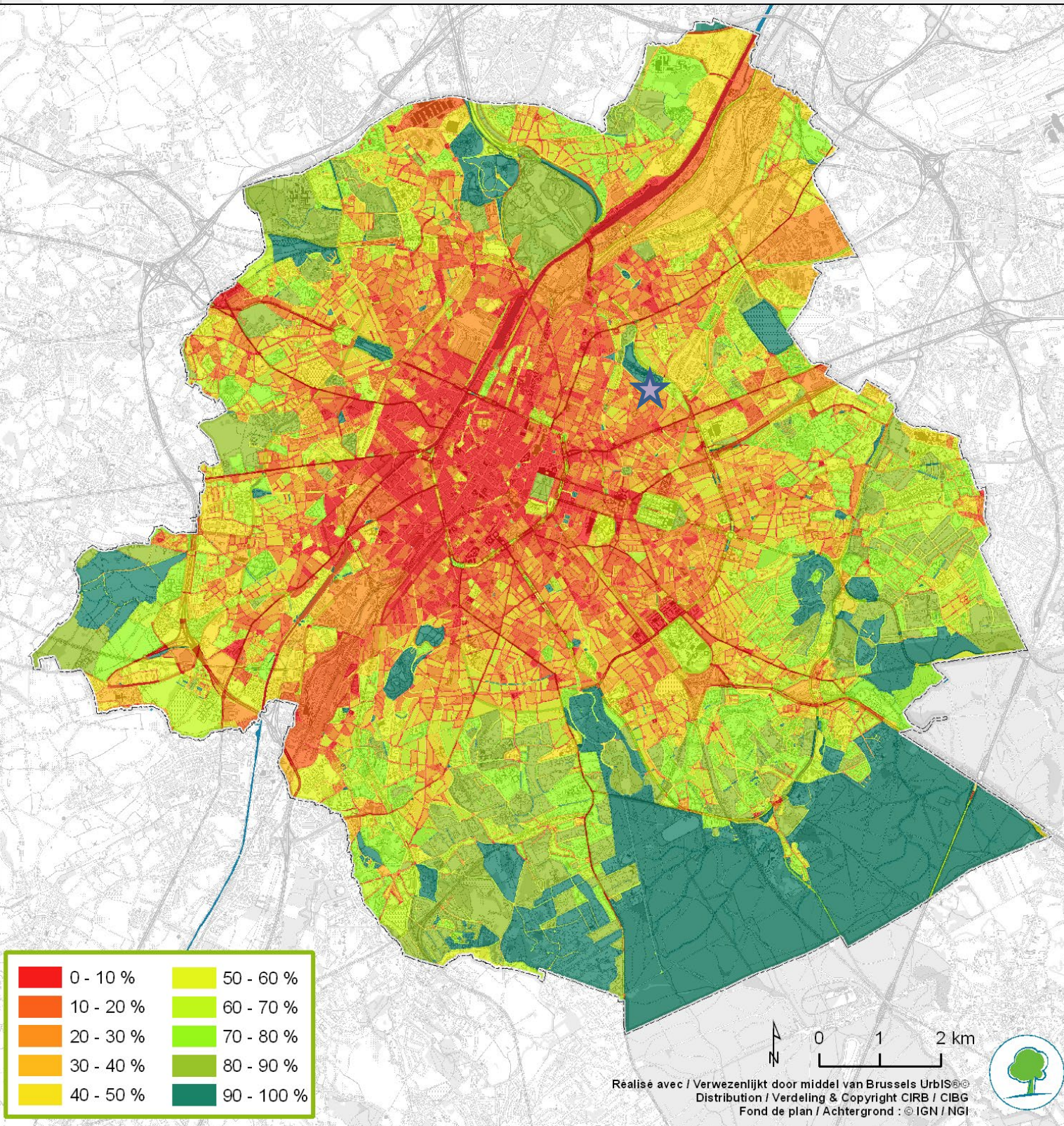


bruxelles  
environnement  
.brussels 





# COMPLEXITY OF URBAN AREAS



161 km<sup>2</sup>

19 municipalities

1.200.000 inhabitants

Dense traffic infrastructure

Fragmentation of habitats

Pressure on green areas (50% of total areas but 50% are private)

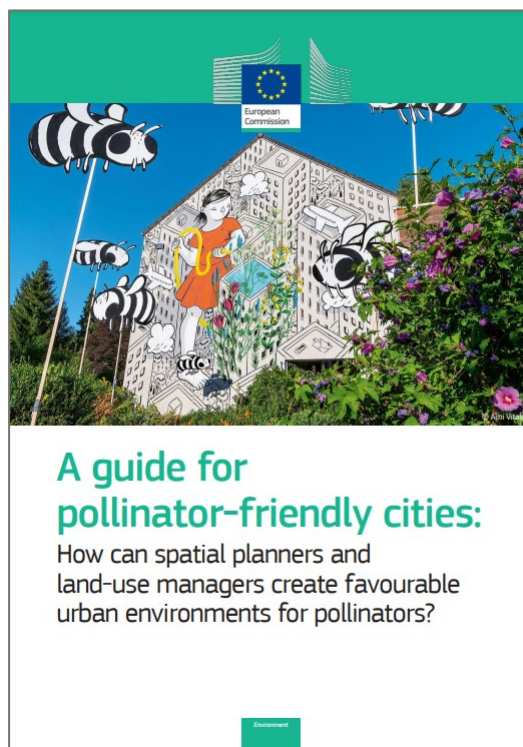
Unequal distribution of green areas





# Pollinators@Brussels is inspired by EU strategy = A need to scale-up current EU initiatives, boost networking and develop scientific knowledge

- **EU Pollinators Initiative** (→2020)
  - Improving knowledge of pollinator decline, its causes and consequences
  - Tackling the causes of pollinator decline
  - Raising awareness, engaging society-at-large and promoting collaboration
- **EU Pollinators information HIVE**
- **Further developing scientific knowledge**
- **Further developing guidance, best practices, frame document for national and regional strategy**





# OUR STRATEGY NEED TO BE THE CORNER STONES OF VARIOUS REGIONAL STRATEGIES



**BYE BYE  
PESTICIDES**  
À BRUXELLES - IN BRUSSEL

Programme  
Pesticides  
*Pesticideprogramma*

Plan Nature  
*Natuurplan*

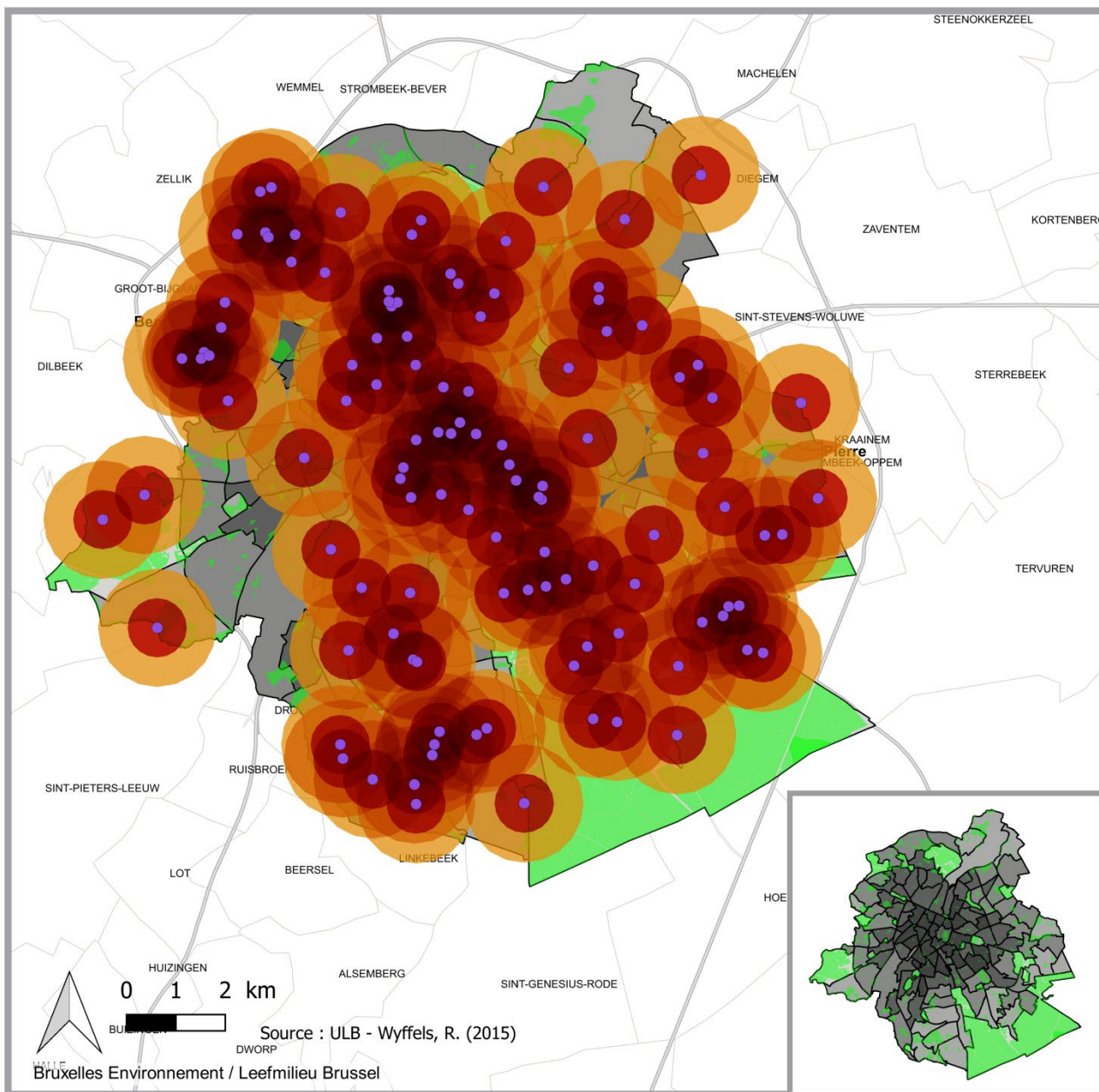
Stratégie  
Good Food-  
*strategie*







# OUR STRATEGY NEED TO ANSWER THIS QUESTION : BEEHIVES: HOW MANY IS TOO MANY?



## Foraging areas for Brussels' apiaries

Partial data  
(111 apiaries)

### Légende

● Apiaries (Wyffels, ULB 2015) [114]

■ Foraging area (600 m)

■ Foraging area (1200 m)

Soil sealing

■ 0 - 20 %

■ 20 - 40 %

■ 40 - 60 %

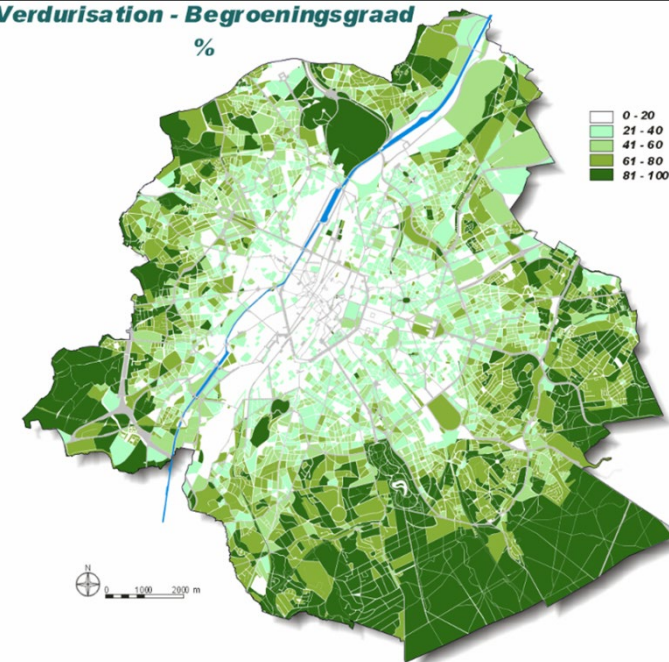
■ 60 - 80 %

■ 80 - 100 %



Fond de plan / Achtergrond :  
Brussels UrbIS ©© - CIRB-CIBG  
© IGN-NGI

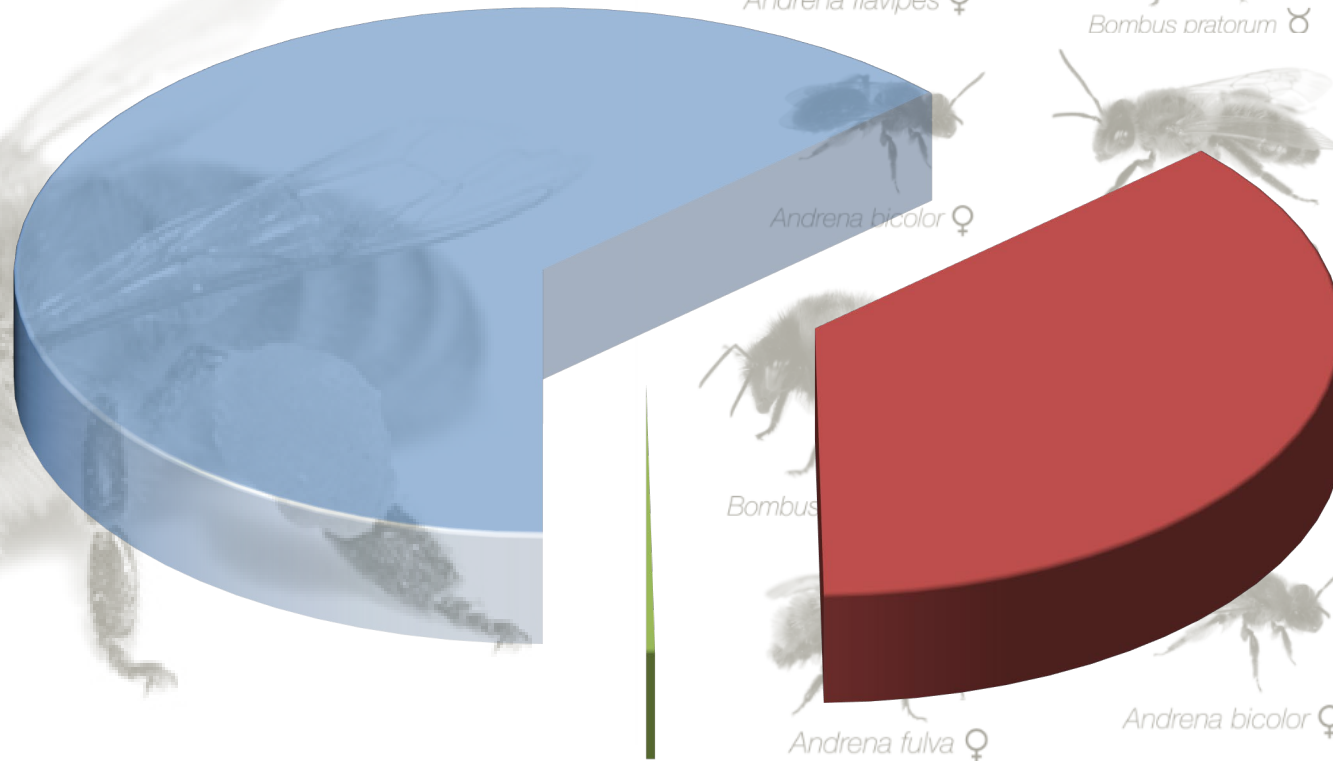
## Verdurisation - Begroeningsgraad %





# OUR STRATEGY NEED TO BE HOLISTIC (ECOSYSTEM APPROACH VERSUS A SINGLE ENTRY DOOR

1 sp. / ~ 14  
0 spp.



- Wild - BE
- Wild - BCR
- Domestic







# A 3 PILARS STRATEGY

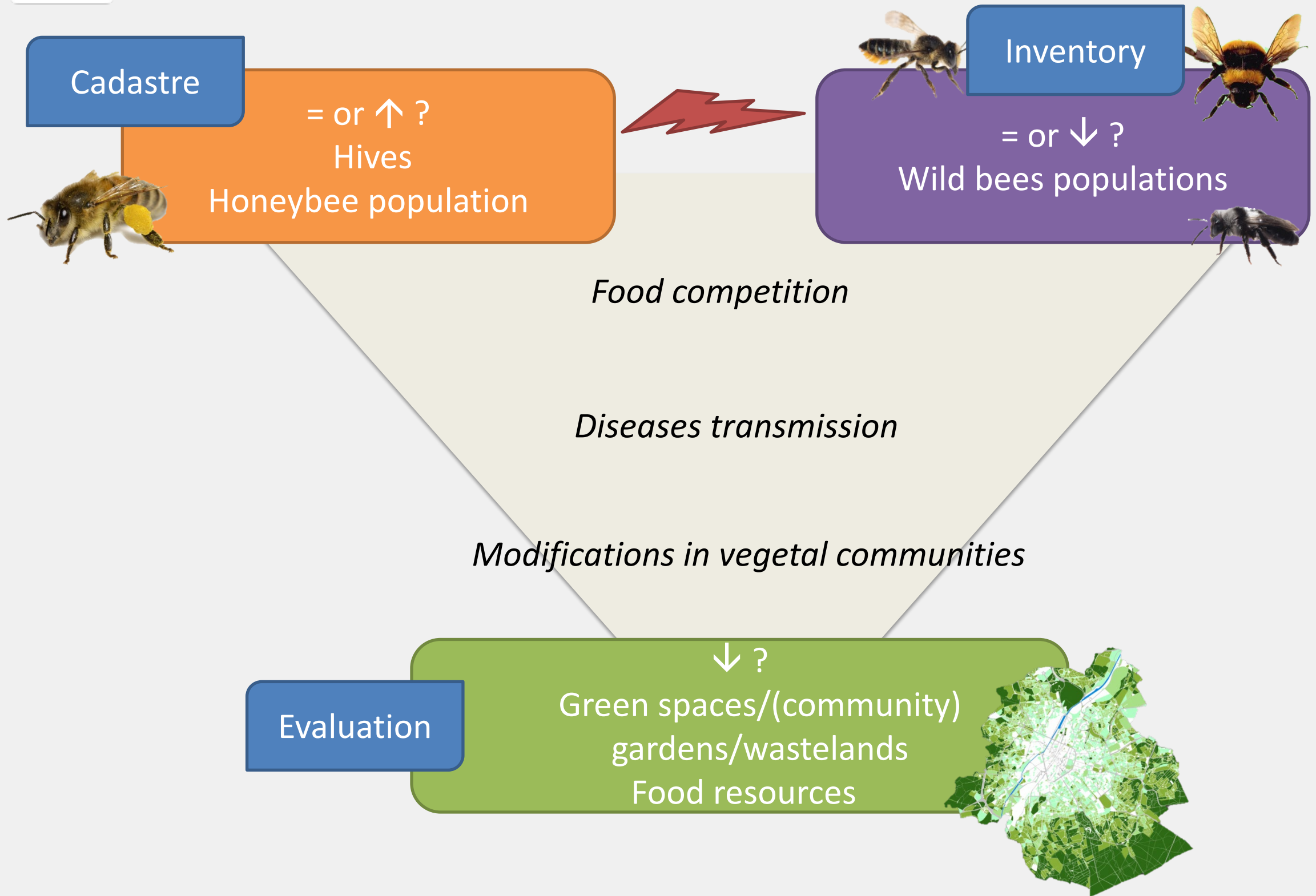


**Streetbees**





# BRUSSELS STRATEGY FIRST PILLAR WILL BE BUILT ON A TRIANGULAR KNOWLEDGE







**bruxelles  
environnement**  
.brussels 

**02 775 75 75 · WWW.ENVIRONNEMENT.BRUSSELS**