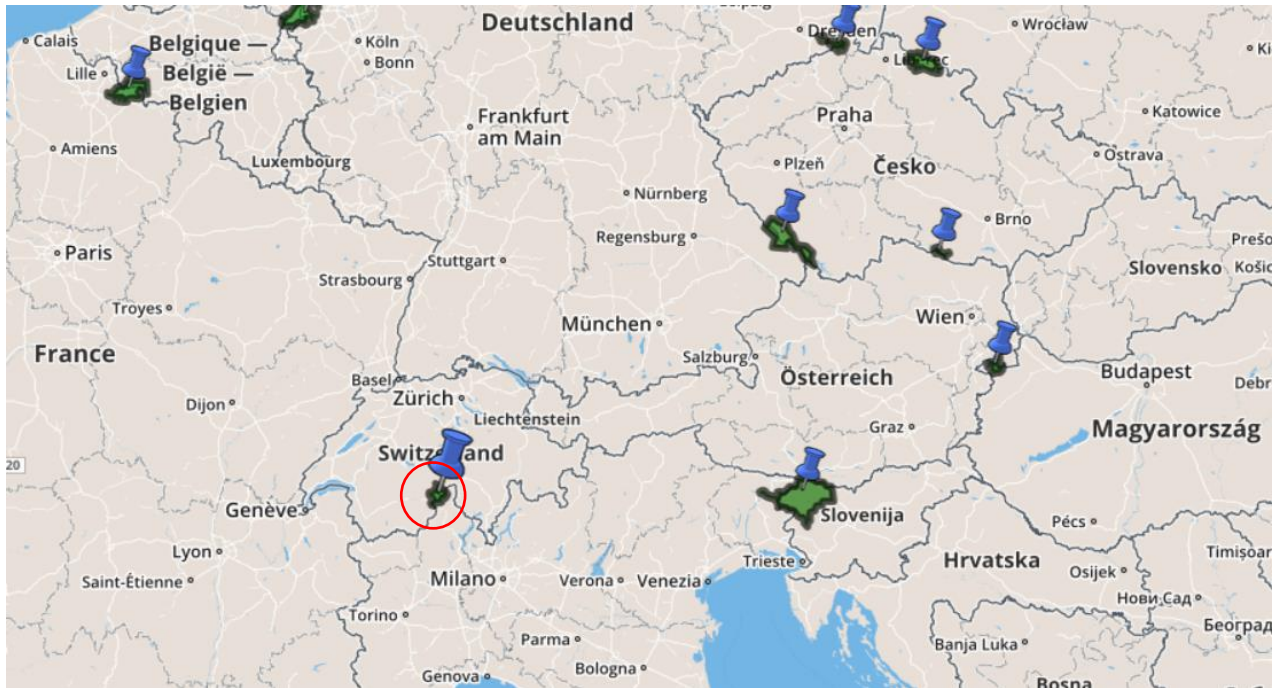


Practical Information

Localisation

The two Nature Parks Binnal and Alpe Veglia-Devero are located in the border area of the Italian Region of Piemonte and the Swiss Canton of Wallis/Valais. The nearest big city is Milan/Italy.



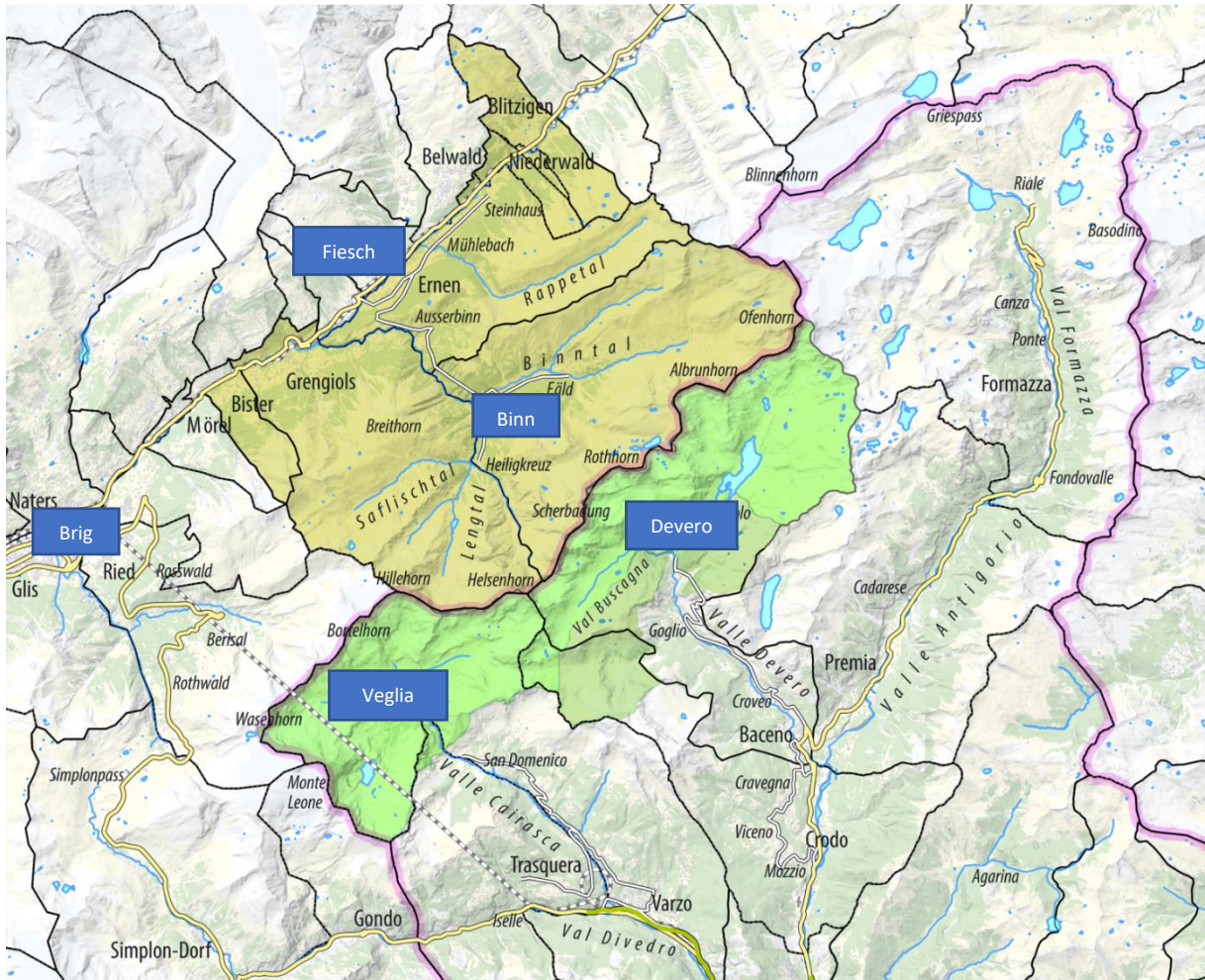
We have two venues for the meeting:

- Tuesday/Wednesday: **Binn** in Switzerland
- Thursday/Friday: **Alpe Devero** in Italy

Travelling time from Binn to Devero: 3 hours (by car or by public transport).

Travelling time from Milan to Binn: 3.5 hours.

Travelling time from Devero to Milan: 2.5 hours.



Domodossola

Travelling to Binn in Switzerland

By train and bus

From North, East, South and West:

- Trains arrive at the international railway station of **Brig**
- little red train to **Fiesch** (35 minutes)
- Postbus to **Binn Dorf** (30 minutes)

Timetable Train/Bus: <https://www.sbb.ch/en/home.html>

By car

There are shuttle trains for cars through the railway tunnels of **Simplon/Sempione** (south), **Furka** (east) or **Lötschberg** (north) arriving at the Upper Valais/Wallis

Route planner: <https://www.viamichelin.com/>

By airplane

The nearest international airport is **Milan Malpensa** in Italy. From there, busses are going to **Domodossola**, connection to **Brig**, by train, connection to **Fiesch** by train and a few busses to **Binn Dorf**.

Time table: Malpensa - Domodossola (Comazzibus)

Malpensa T1	7.20	10.00	11.00	13.00	14.50	*
Malpensa T2	7.25	10.05	11.05	13.05	14.55	
Domodossola Railway Station	8.40	11.25	12.25	14.25	16.15	

** If you arrive later, let us know and we will find a travel solution.*

In any case we have to make a reservation for the bus.

Time table: Domodossola - Brig (Train)

Domodossola	8.48	11.48	12.48	14.48	16.48	
Brig	9.16	12.16	13.16	15.16	17.16	

There is a train every hour.

Time table Brig - Fiesch: (Train, Matterhorn Gotthard Bahn MGB)

Brig	9.23/9.48	12.23/12.48	13.23/12.48	15.23/15.48	17.23/17.48	
Fiesch	9.55/10.22	12.55/13.22	13.55/14.22	15.55/16.22	17.55/18.48	

There are 2 trains every hour.

Time table: Fiesch – Binn (Postbus)

Fiesch	11.48	14.08	15.08/15.58		17.58	
Binn	12.19	14.33	15.33/16.23		18.23	

There are just a few connections from Fiesch to Binn. So, communicate us your arrival time at Fiesch and we will take you with a shuttle bus to Binn.

Contact

If you have any questions concerning the organisation of your travel, please contact Doris Imhasly of Binntal Nature Park: doris.imhasly@landschaftspark-binntal.ch