

EUROVÉRTICE
EXPERTS IN EUROPEAN FUNDING

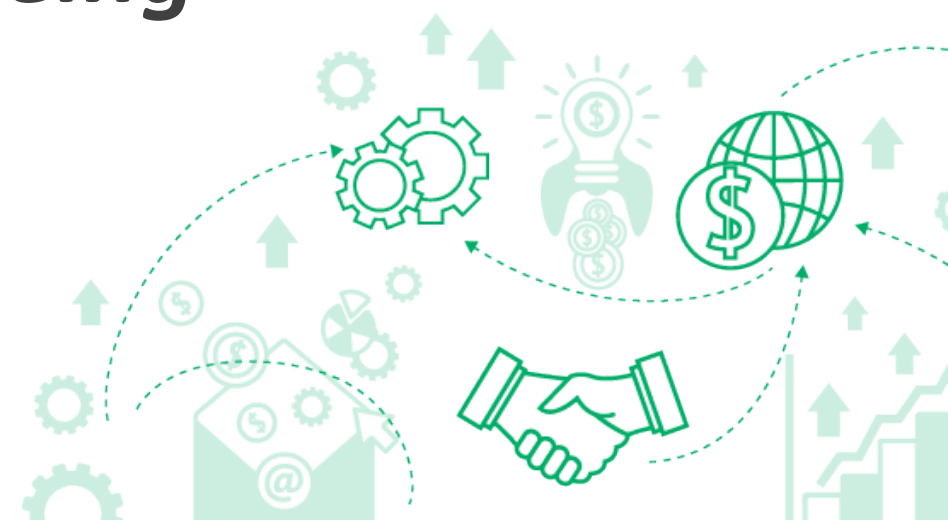
Make Innovation Yours

EUROPARC roundtable

**HPHPE surgery:
Developing projects to deliver
the Healthy Parks Healthy
People Europe programme in
practice**

INTERREG EUROPE GREENHEALTH proposal *Sustainable protected areas as a key value for human well-being*

*With the
participation of...*



- Programme financed by **European Regional Development Fund (ERDF)**
- **Objective:** to improve the implementation of regional development policies through the **exchange of experiences, innovative approaches and capacity building** in the identification, dissemination and transfer of good practices among key actors of regional policies.

Topics

Group 1
(80% budget)

Group 2
(20% budget)

Smarter Europe

More connected Europe

Greener Europe

Europe closer to citizens

More social Europe

More social Europe

Specific objectives:

- (i) Energy efficiency and reduction of greenhouse emissions
- (ii) Renewable energy
- (iii) Smart energy systems, grids and storage
- (iv) Climate change adaptation, disaster risk prevention, resilience
- (v) Access to water and sustainable water management
- (vi) Circular and resource efficient economy
- (vii) Protection and preservation of nature and biodiversity, green infrastructures, pollution reduction**
- (viii) Sustainable urban mobility for zero carbon economy

Partnership

INTERREG EUROPE 2021-2027



Norther and Western
Regional Assembly
(Ireland)

Kullabergs naturreservat,
Länsstyrelsen Skåne(Sweeden)

EUROPARC
Federation
(Germany)

Podka-packie
Region(Poland)

Prešov Self Governing Region (Slovakia)

Public Institution for Management of
Protected Natural Areas of the
Dubrovnik-Neretva County (Croatia)

They participate in the project to **offer a concrete capacity** that can **help** the project to achieve its objectives.

ADVISORY
PARTNER

COORDINATOR

Dirección General de
Medio Natural de la
Región de Murcia (Spain)

Project idea

Background. What are the key issues?



- Biodiversity loss → **European Biodiversity Strategy 2030**. Relevance of **protected areas** in Europe (**over 120,000 sites**)
- Demonstrated **link** between **nature** and **human health/well-being**
- Increase in **visitors after COVID-19**. Need to **adapt management** to meet demands and contribute to citizen wellbeing without compromising environmental goals
- Need to remove **environmental barriers and design friendly spaces**, which will encourage people to take care of nature and of their own health.
- **Lack of networks between stakeholders** to set a common and integrated strategy to maximize the ecosystem services that PAs provide, specially for human health and wellbeing
- **Communication programmes** usually focus on communicating natural values, but do not emphasize the impact of PAs on citizens health

What does the project aim?

Objective: making EU regions more biodiversity-resilient by improving the management of European PAs through **strengthening links between biodiversity protection and human health and well-being.**

Sub-objectives:

- Increase the knowledge and capacity building of EU regional public authorities in the following thematic areas:
 - improving PAs management and accessibility without compromising the objectives of nature conservation and sustainable development
 - investments and funding opportunities for green infrastructure to promote human well-being
 - promoting nature-based interventions to attract new target groups to nature as more inclusive areas: reducing social inequalities through nature
 - capacity building of PA's managers in the management of health-promoting places and related monitoring and evaluation
 - communicating the mental and physical health benefits of protected areas
 - new technologies in protected areas
- Develop **networks** that enable **collaboration** at strategic and operational level between health, environment and other key stakeholders.
- **Identify, transfer and adopt innovative and successful good practices and lessons learned** in the regions to improve regional policy instruments and create the right regional contexts to maximize the links between protected areas and health and well-being.

What does the project involve?

WORK PROGRAMME
2 PHASES

**Project
duration:
4 years**

Core phase

- **3 years.** Exchange of experiences (identification of good practices, interregional learning, training, action plans...).

Follow up phase

- **1 year.** Follow-up of the results of the exchange of experience and action plans

All the process accompanied by **communication activities** (website, logo, social media, videos, brochures, newsletters...) and **management.**

WORK PROGRAMME

CORE PHASE

WORK PROGRAMME

2 PHASES



Important role of EUROPARC:

Support and capacity building on the use of the HPHPe toolkit.

Coordination in the communication.

- **Identify, select and transfer best practices** among the regions (Development of **regional studies** and design of an **action plan**).
- **Capacity building** sessions related with the Healthy Parks, Healthy People programme and toolkit
- Formation of **local living labs** with the participation of regional and local stakeholders (Partners, responsible organizations for protected areas and health policies, academia representatives, citizens and associated policy authorities...). These groups will be set from the beginning of the project and will meet once per semester.
- Organization of **3 Interregional Learning Workshops** for the transfer of best practices.
- Project meetings and study visits to learn about the **different regional territorial contexts** and decide with of the best practices visited are most suitable to be transferred into our own context.

WORK PROGRAMME

FOLLOW UP PHASE

WORK PROGRAMME
2 PHASES

- Monitoring of the **improvements in the policy instruments**
- Implementation of a **pilot action**, as a small scale test of some good practices discovered
- **“Online green and healthy coffee breaks”** to monitor the implementation of the action plans at local level and the transfer of good practices
- Congress to present updates of the **“Healthy Parks, Healthy People”** programme and toolkit
- Consolidation of **local living labs**, continuation of periodic meetings between stakeholders

How are the parks and PAs involved?

- As **partners**
- As **participants of the local action groups** (Living labs)



How does it deliver health outcomes/engage with the health sector?

- **Participants of the local action groups** (Living labs)
- Attendance to **Interregional Learning Workshops** and project events

Create **linkages between health and environmental policies** and incorporating human health initiatives into protected area programmes:

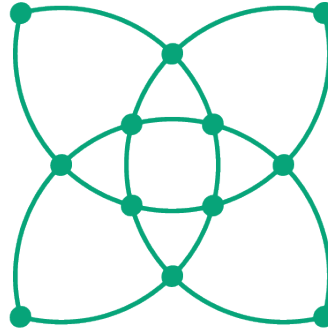
- **ENVIRONMENTAL IMPACT:** by revaluing these areas, society will demand their conservation and more funds will be allocated, which will have a positive impact on biodiversity.
- **SOCIAL IMPACT:** the social benefits of protected areas for European citizens would be maximized.

Deliver the HPHPe Europe programme in practice

OUTCOMES
GREENHEALTH



- **Promotion** and use of the **tools and methodologies** already created with “Healthy Parks, Healthy People” (HPHPe toolkit)
- Identification of **innovative best practices to incorporate to the HPHPe**. Learnings from **other regional contexts**
- **Opportunities** for creating a **network** with areas of Europe that are **less active at the moment (East, South)**
- **Budget and opportunities to organize events and capacity-building workshops** aligned with **HPHPe priorities**



For more information:

Marta Reguilón:

marta.reguilon@eurovertice.eu

Consuelo García:

consuelo.garcia@eurovertice.eu

EUROVÉRTICE

EXPERTS IN EUROPEAN FUNDING

Make Innovation Yours

