

« Natur'Adapt,  
The necessary adaptation »



# Introduction

*Natur'Adapt project and some  
lessons learnt*

*Anne-Cerise Tissot, Réserves Naturelles de France*

Tuesday 20th June 2023

LIFE #CC #NATURADAPT - LIFE17 CCA/FR/000089





# Natur'Adapt project in brief



**MAINSTREAMING  
climate change  
in protected areas  
MANAGEMENT**

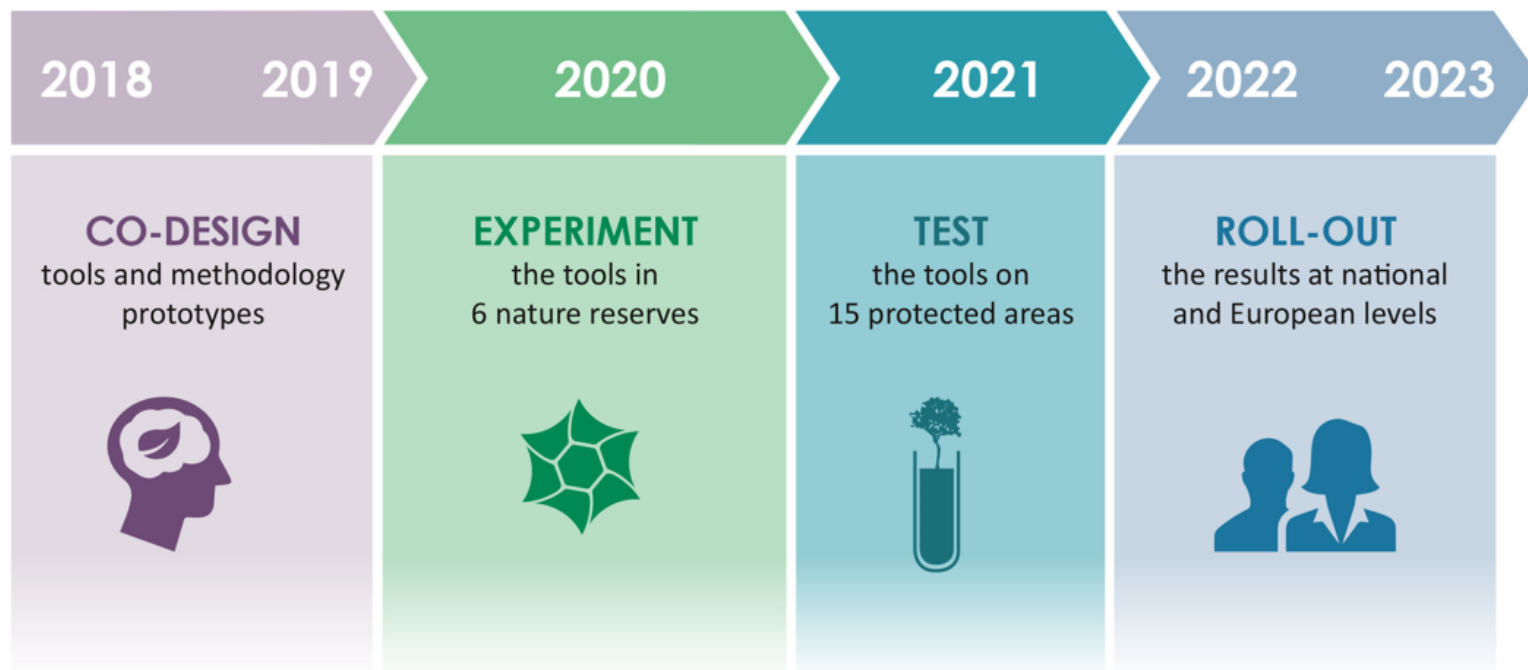


## 10-year objective



of French Nature Reserve managers have adopted these management, planning and adaptative governance processes in a context of climate change and the other main protected natural areas are moving in the same direction.





## Project coordinator



With the financial support of



Contact : [naturadapt@rnfrance.org](mailto:naturadapt@rnfrance.org)  
+33 (0)3.80.48.91.00

## Partners involved in the project

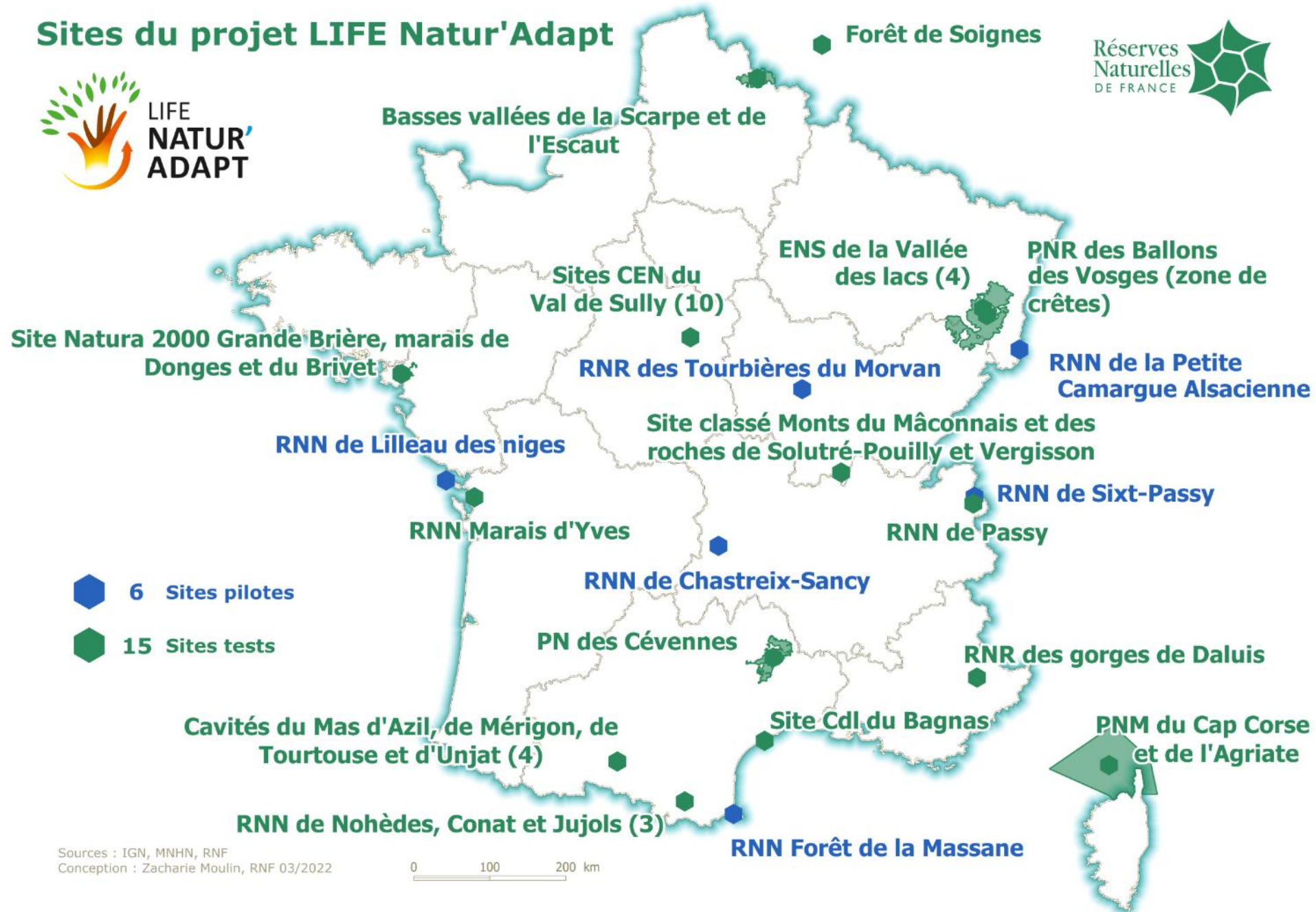


## Project co-financers



The Natur'Adapt project has received funding from the LIFE Programme of the European Union

# Sites du projet LIFE Natur'Adapt









A scenic photograph of a forest stream with a small waterfall. The water flows over mossy rocks into a pool, surrounded by trees and fallen leaves. The text "Our work" is overlaid in the center.

# Our work



## A EUROPEAN PROJECT ?

- Most of the work has been done in France & French

### BUT :

- **A specific action at European level** managed by EUROPARC Federation, with a dedicated « **Task Force** » (thanks to them!), webinars, articles, 2022 Conference, etc. in English



- All productions have a least an **English summary**, some have been (or will be) entirely translated in English





Welcome to the Natur'Adapt community!  
What are we talking about? The Natur'Adapt community is interested in climate change and its impacts on nature, particularly in protected natural areas (national reserves, Natura 2000 sites, national parks, regional natural parks, etc.).

Collaborative online  
**platform**  
<https://naturadapt.com/>

*English viewing  
possible*

**DEVELOP AND  
MANAGE A  
COMMUNITY** on  
the topic of CC  
adaptation in PA

**White paper** on  
European policies

*In English [here](#)*

**USE ALL  
LEVERAGES** to help  
actual adaptation  
on the ground

**Pledge** of European PA  
networks

*In English [here](#)*

**PROPOSE A  
METHOD AND  
TOOLS** for PA  
managers to adapt  
to climate change

**Methodological guide** to  
carry out a vulnerability  
assessment and an  
adaptation plan at PA scale



*In French [here](#)  
English version soon!*

**Online training course** for  
professionals

*In French only  
Simplified English  
version **considered***

**Feedbacks** from the field

*Vidéos and articles in  
English [here](#)*



Bibliography, experts and stakeholders

🕒 15-20%

## IMMERSION & FRAMING

- **Understand** global climate change
- **Know** the characteristics of the protected area
- **Frame and plan** the process



Framing note

🕒 40-45%

## PROSPECTIVE ANALYSIS

- Analyse past and future **climate**
- Analyse the **direct and indirect effects** of climate change on the protected area



Vulnerability assessment

🕒 30%

## MANAGEMENT ADAPTATION

- Define an **adaptation strategy and actions**
- Feed the **management reference document**



Adaptation plan

🕒 10%

## REVIEW AND CAPITALISATION

- Take a **step back**
- **Share** results
- Provide **feedback** to peers



Status report





PROJET  
CORSE  
2014-2020

# Lessons learnt



## Adaptation is a forward-looking, iterative process

- You are projecting into the future, with many **uncertainties**
- **Qualitative**: you are working on trends and expert opinion
- Requires you to "**zoom out**" in time, space and intellect
- **Time-consuming**: you need to build skills, raise awareness (internally and externally), and "digest" the results at each major stage, etc.
- **Iterative**: you often come back to previous results
- **Continuous**: there is no end to adaptation!



The process makes you wear your « climate change glasses ». This is even more important than the produced documents!

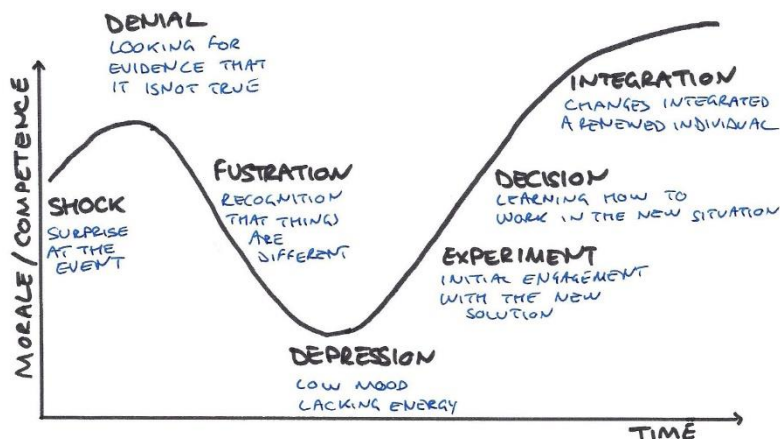


## Adaptation challenges, but it also creates opportunities

### ➤ Challenging :

- You go through the different **emotional** phases of change (Kubler-Ross)
- **Changes the way you look** at you work as PA manager

## KUBLER-ROSS CHANGE CURVE



DifferentWired.co.uk

### ➤ Source of opportunities for the protected area :

- New **knowledge and skills**
- **Anticipating** rather than reacting
- **New internal and local dynamics**, with new relationships with local stakeholders, etc.

## Towards less patrimonial and more dynamic management



- Some species and habitats will disappear, others will appear and balances will be **altered**
- Climate change **(re)challenges current management**, from objectives to operations
- Habitat **connectivity and functionality** are key factors for adaptation



**The purpose of protected areas can no longer be only to conserve the species and habitats that justify their creation, but to be functional and connected nature areas that shelter a rich biodiversity!**



Adaptation is :

**Indispensable!**



# Thank you for your attention !



## Project coordinator



With the financial support of



Contact : [naturadapt@mfance.org](mailto:naturadapt@mfance.org)  
+33 (0)3.80.48.91.00

LIFE17 CCA/FR/000089 – LIFE #CC #NATURADAPT

## Partners involved in the project



## Project co-financers



The NaturAdapt project has received funding from the LIFE Programme of the European Union