

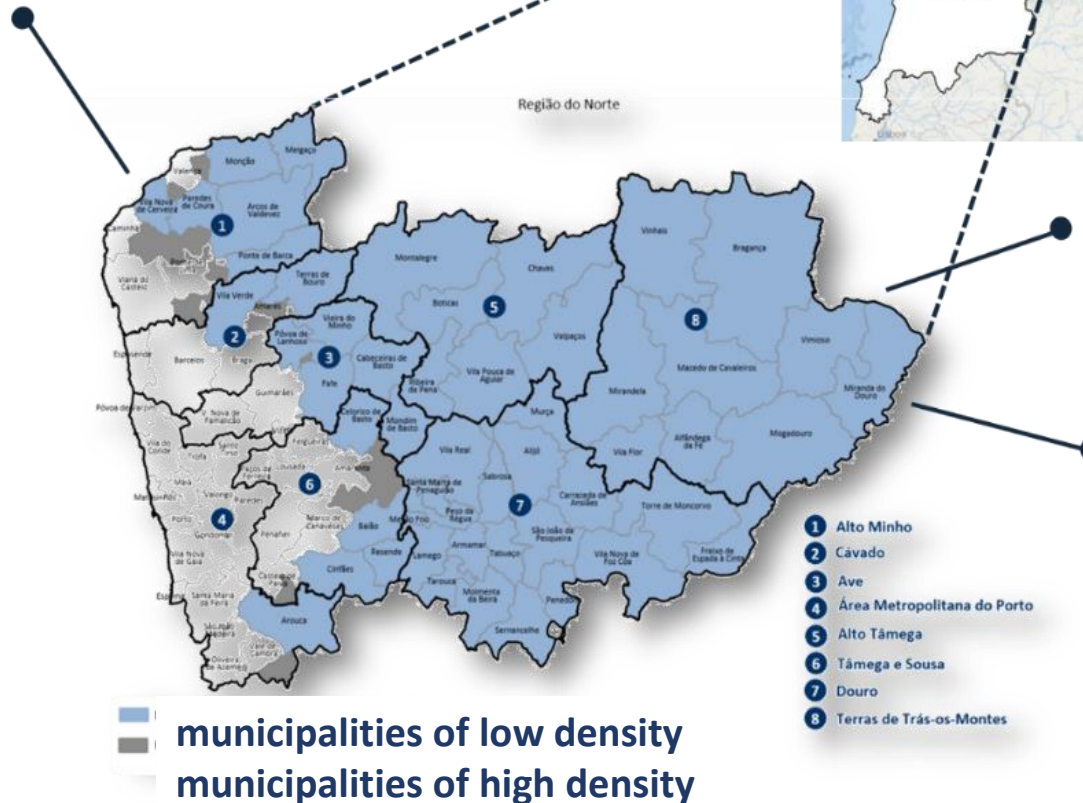
Strategic planning for climate adaptation and biodiversity conservation

The ABC Challenge **A**qua, **B**iodiversity and **C**arbon

Linking Natural Resources Protection, Habitat Restoration and **Carbon Farming**

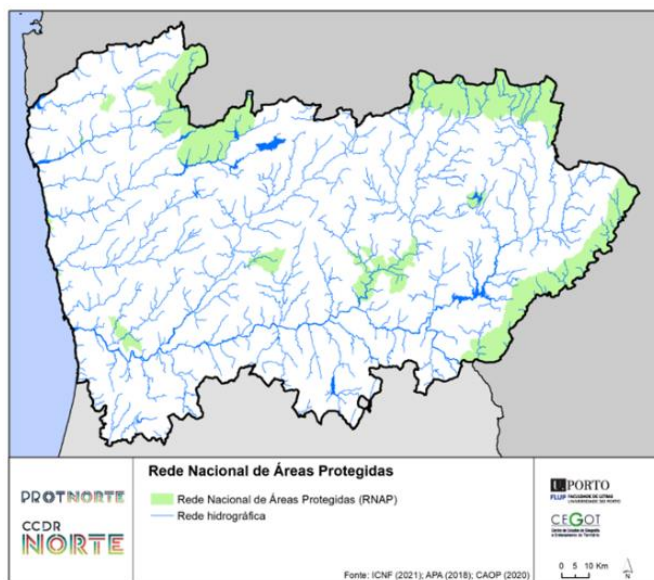
NORTE's Region: we are....

3,6 M inhabitants
35% of Portuguese population
8 NUT III units

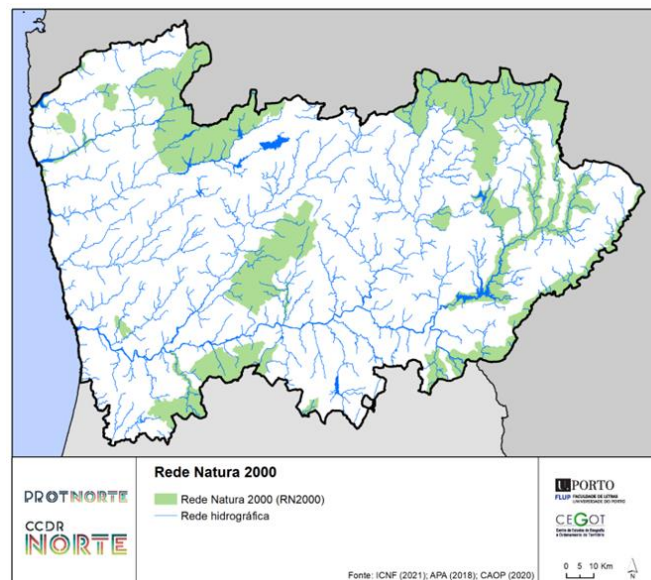


- Regional Authority for Land Planning
- Coordinates and manages the EU funding
- Increasing planning policies' coordination
- Regional Commission for the Integrated Management of Rural Fires System
- Approval of our Regional Master Plan (PROT-NORTE) expected beginning 2024

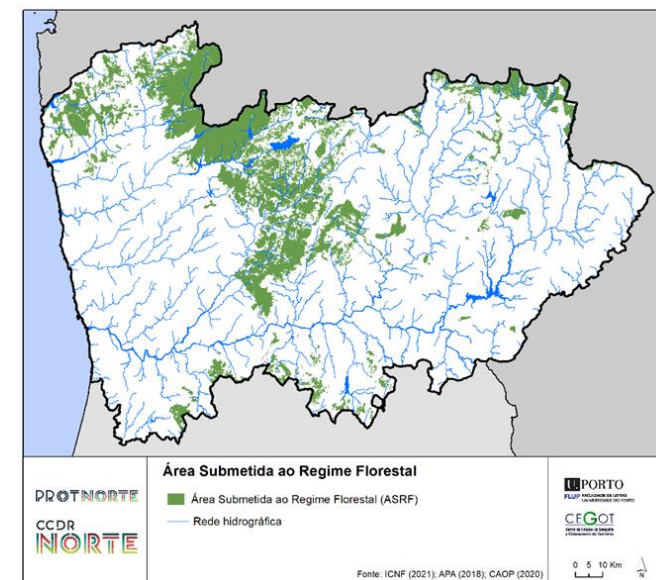
Main Natural assets with legal recognition...



+



+



Protected Areas Network

13 different type of PA
1 national park
4 nature parks and other PA
260K ha
35% of national PA network

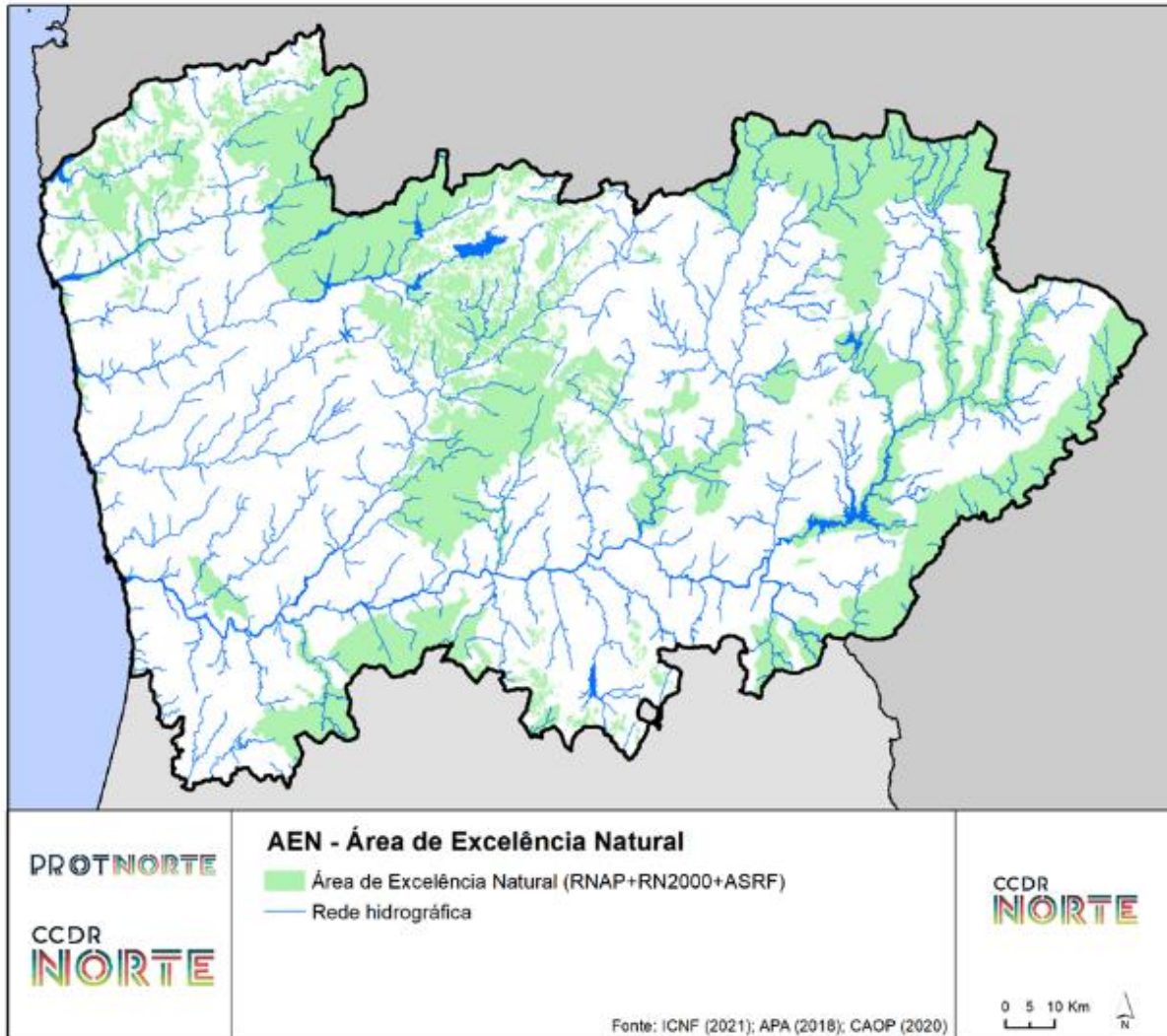
Natura 2000 Network

19 SAC Special Areas of Conservation
5 SPA Special Protected Areas
450K ha (non overlap area)
24% of national N2000 network

“Communal Forest” Areas

53 Communal Forest units
98% of commons (baldios)
308k ha
59% of total “Communal Forest”

Area of Natural Excellence (ANE)



671k ha of natural excellence areas:

259k ha of forest

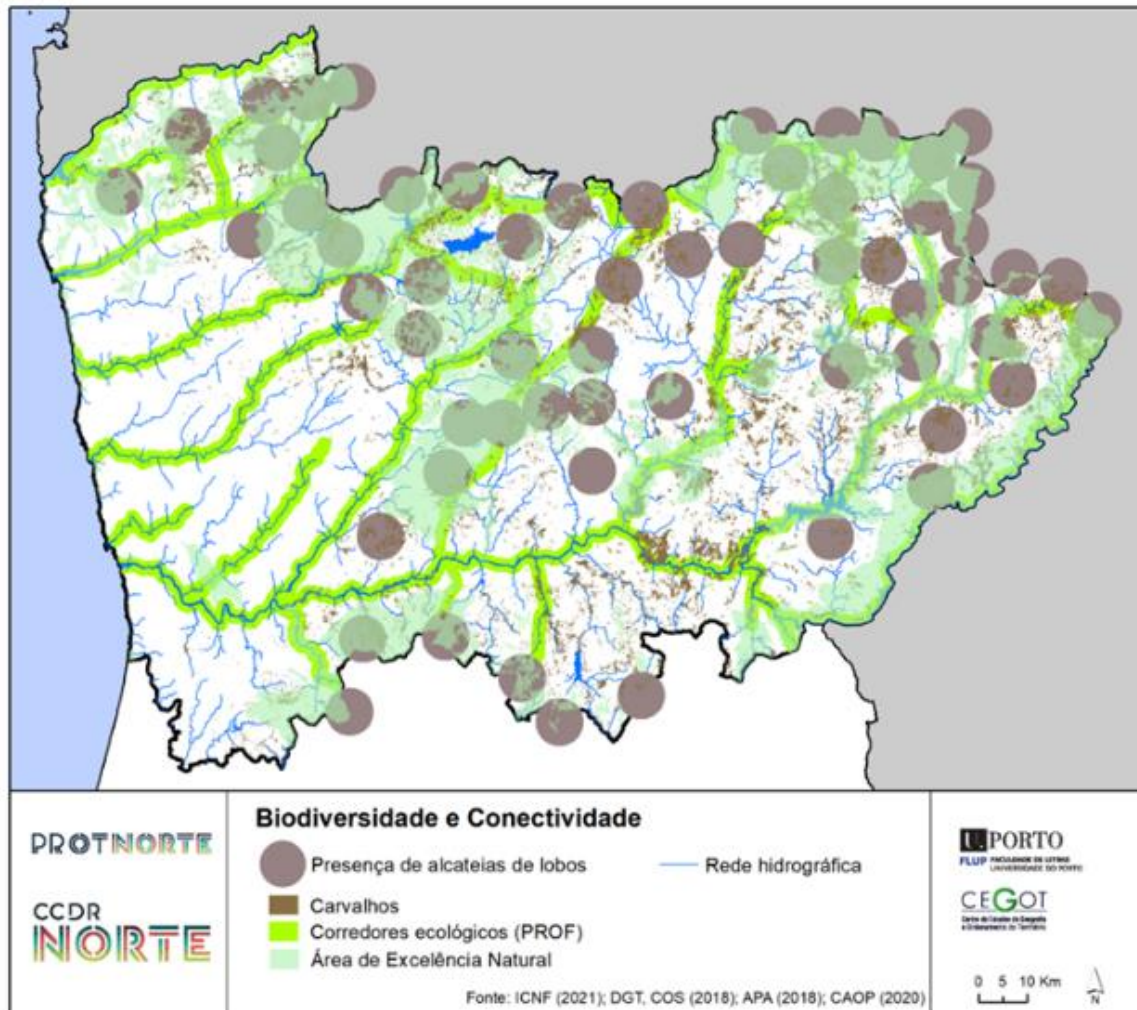
273k ha of shrub and rangelands

303k ha of commons (baldios)

74% of the LSU livestock Unit mainly local breeds

Biodiversity and connectivity,

the next step for nature conservation

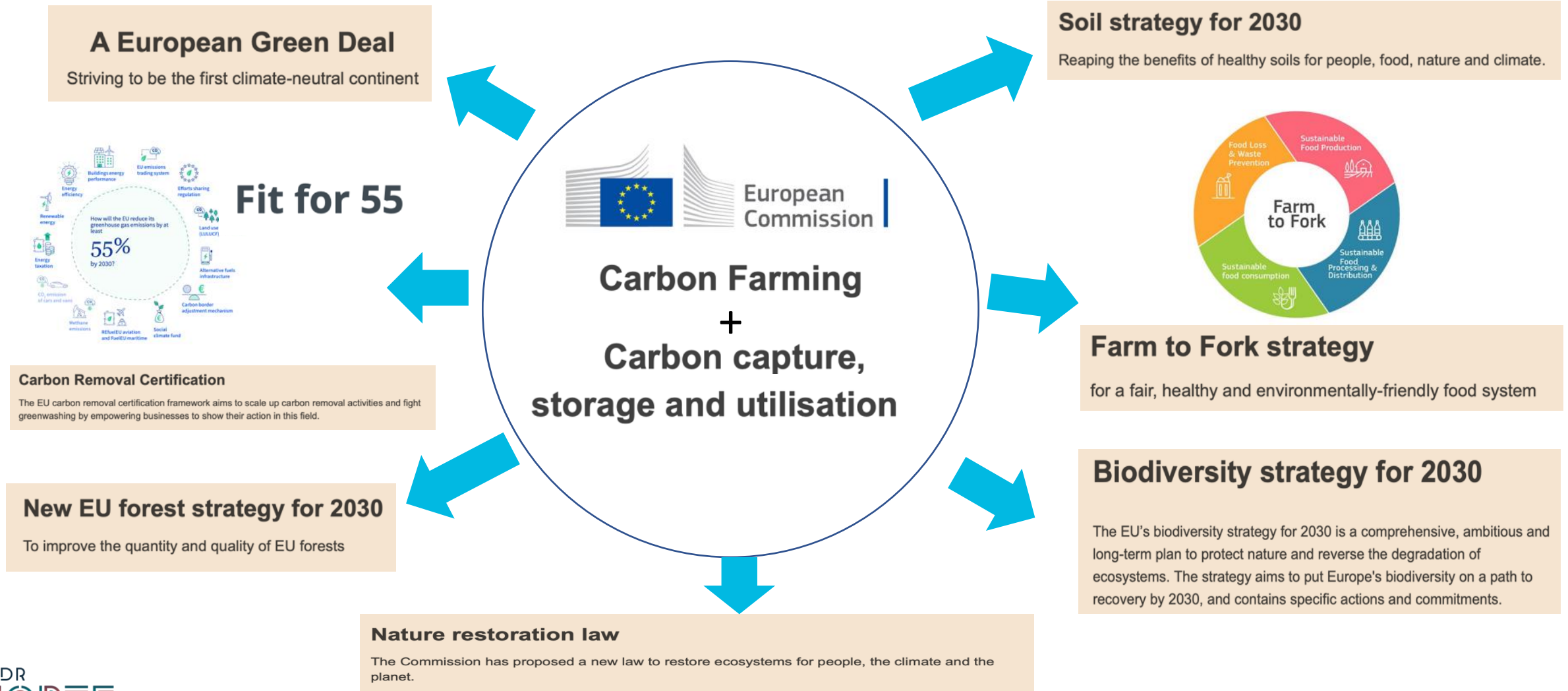


1 million ha

325 758 ha outside ANE

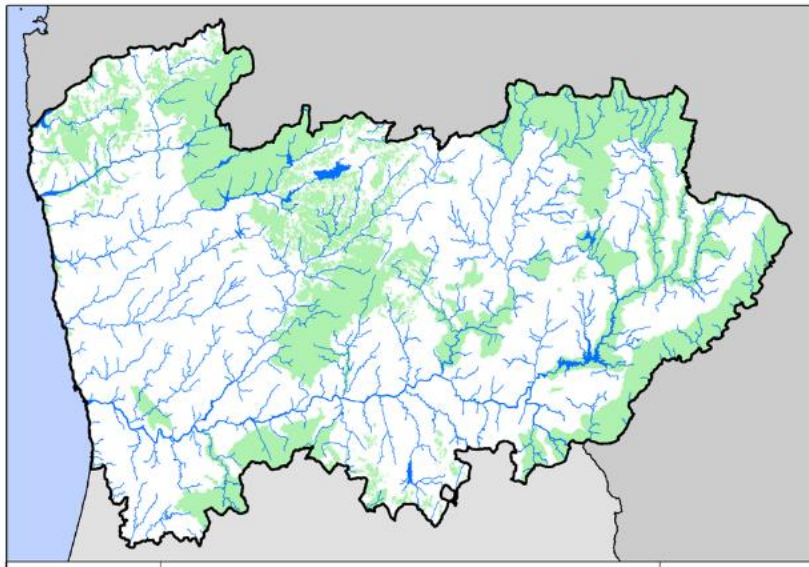
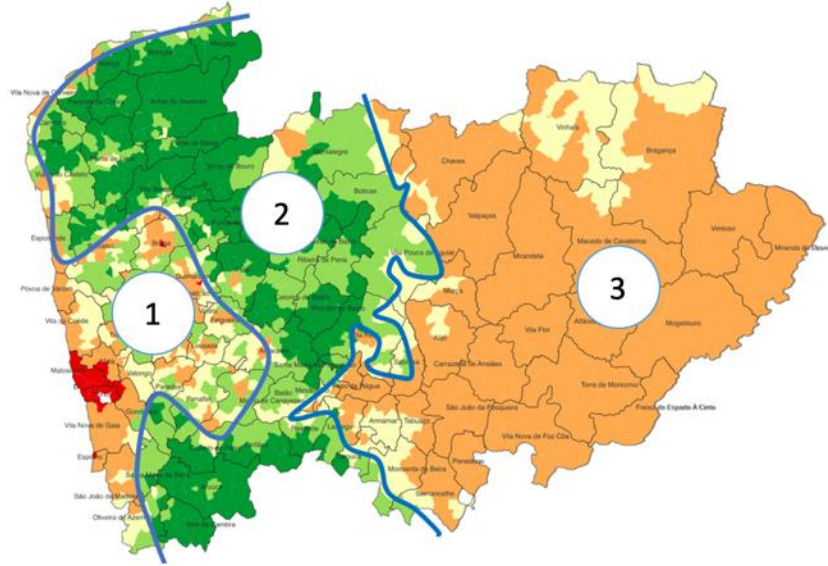
Linking Natural Resources Protection, Habitat Restoration and Carbon Farming

Completely aligned with European Strategies and plans:



Linking Natural Resources Protection, Habitat Restoration and Carbon Farming

Different opportunities for carbon sequestration projects:



- The northern region has three homogeneous territories from the point of view of carbon neutrality:
 1. Territories with high GHG emissions and very low carbon stocks – coastal, industrialized;
 2. Territories with low GHG emissions and high carbon stocks – mountainous center with integration of forest, livestock and shrub and rangelands in commons areas;
 3. Territories with low GHG emissions and very low carbon stocks – essentially based on extensive agricultural production and shrub and rangelands



The ABC Challenge - Aqua, Biodiversity and Carbon: we want/we wish...

- We are available to integrate a network and share results and knowledge.
- We have a good knowledge about carbon neutrality to share
- Nature conservation authorities and commons can develop large areas of habitat restauration connected with water catchment protection and carbon neutrality
- We are making a huge effort with Rural Fires control with this new Integrated Management System and Action Plan
- It is urgent to set up pilot areas and all the pre-requisite actions to install the “Observatory” that will in the future certify all the neutrality action

Thank you!

alexandra.cabral@ccdr-n.pt

Linking Natural Resources Protection, Habitat Restoration and Carbon Farming