



Connecting People & Parks
since 1973

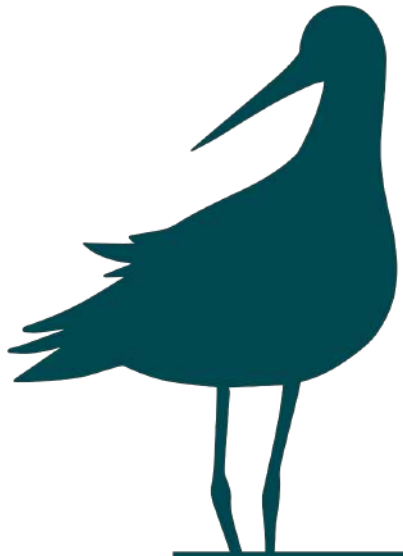


Landscapes for the Future

EUROPARC Conference 2023 – Tribute to our landscape
Where nature and people meet in harmony



Connecting People & Parks
since 1973



EUROPARC Conference 2023

TRIBUTE TO OUR LANDSCAPE

Leeuwarden | The Netherlands | 3-6 October 2023

WHERE NATURE AND PEOPLE MEET IN HARMONY



What will we be doing

- Welcome
- PART 1
 - What is management effectiveness
 - Case studies
- PART 2
 - Management Effectiveness in your protected area
 - Our challenges
 - Implementing management effectiveness
- What do we do now?



Connecting People & Parks
since 1973



What is Management Effectiveness?

Background to management effectiveness

The role of the IUCN

CBD and EU Biodiversity Strategy 2030

Europarc Management Effectiveness Commission

EUROPARC Conference 2023 – Tribute to our landscape
Where nature and people meet in harmony

Effective protected area management should achieve positive and sustained conservation outcomes.

Protected area management effectiveness (PAME) assessment: is defined by the IUCN World Commission on Protected Areas (WCPA) as the assessment of how well the protected area is being managed – primarily the extent to which it is protecting values and achieving goals and objectives. The term management effectiveness reflects three main themes:

- design issues relating to both individual sites and protected area systems;
- adequacy and appropriateness of management systems and processes; and
- delivery of protected area objectives including conservation of values.

<https://julkaisut.metsa.fi/fi/julkaisut/show/416>

EMEC: EUROPARC Management Effectiveness Commission

- PAME – one of the main tasks to establish and operate till 2030
(EU Biodiversity Strategy - 30x30, Nature Restoration Law, ...)

„You can't manage what you can't measure.“ (Peter Drucker)

EMEC: Membership

- Michael Hošek (EUROPARC Federation Council)
- Leelo Kukk (EUROPARC Federation Council)
- Ben Ross (EUROPARC Atlantic Isles Section, Nature Scot)
- Matti Tapaninen (EUROPARC Nordic-Baltic Section, Metsähallitus)
- Diego Garcia (EUROPARC Spanish Section)
- Elena Osipova (European Environment Agency)
- Erika Stanciu (IUCN World Commission on Protected Areas)
- Micheal O'Brian (expert)

EMEC: Goals

1. Clarification of expectations by our partners (European Commission / European Environment Agency) incl. EUROPARC members consultation
2. Desktop collation of existing methodological approaches and comparison analyses.
3. Developed recommendations of necessary actions.
4. Prepared project proposal for the pilot implementation. To develop new guidance.

Case Studies

System level

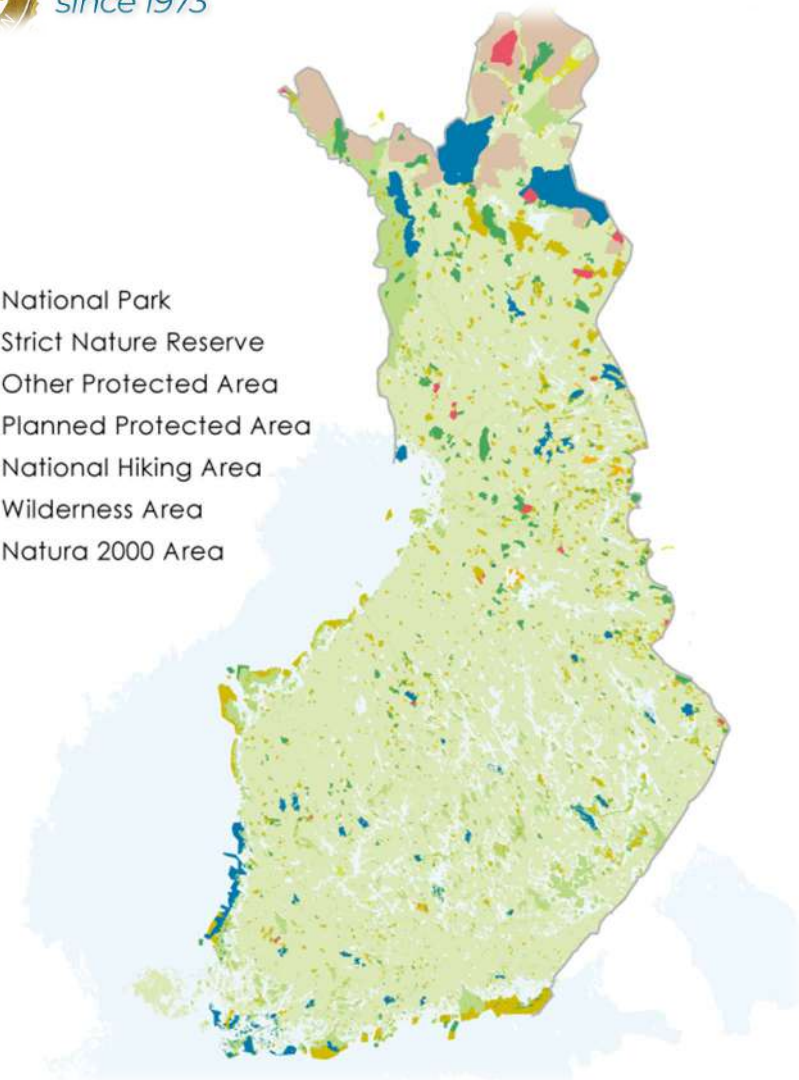
Site level



Connecting People & Parks
since 1973



-  National Park
-  Strict Nature Reserve
-  Other Protected Area
-  Planned Protected Area
-  National Hiking Area
-  Wilderness Area
-  Natura 2000 Area



Protected Area Management Effectiveness for Parks & Wildlife Finland

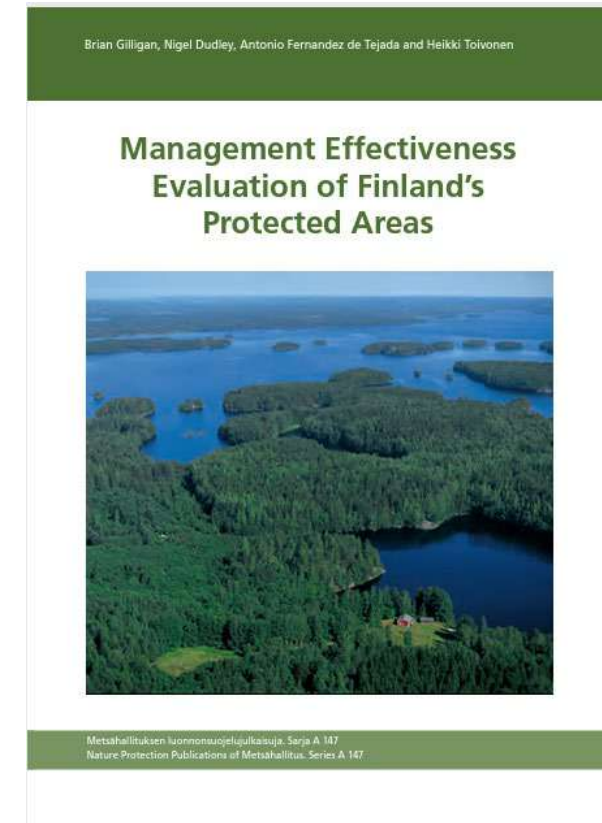
Matti Tapaninen

EUROPARC Conference 2023 – Tribute to our landscape
Where nature and people meet in harmony

Evaluations 1994 ja 2004

- **2004 recommendations:**

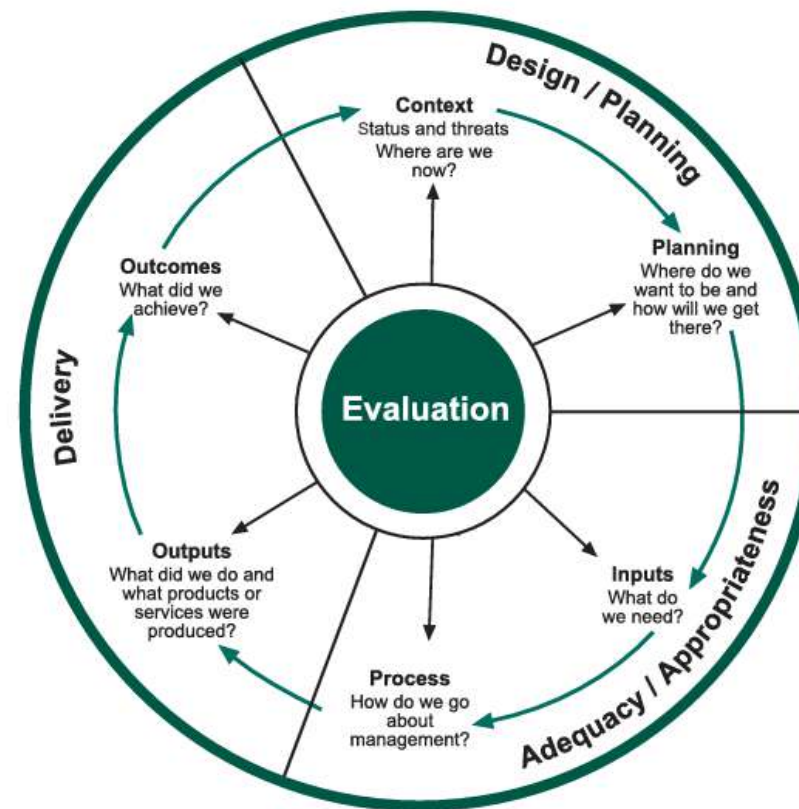
- Ecosystem approach in planning
- National strategies for alien species and climate change
- Development for management planning and resources for it
- More focus to the outcomes of conservation
- Communications and participation. More focus with positive attitude to conservation
- Better understanding for environmental impacts of recreational services
- Wider economical background
- Better understanding of the international importance of Parks & Wildlife Finland
- Strategy for the management of cultural heritage
- State of Parks reporting



<https://julkaisut.metsa.fi/fi/julkaisut/show/416>

Figure 3. The Framework for assessing management effectiveness of protected areas

IUCN framework





Sue Stolton/Nigel Dudley,
Equilibrium Research



Ben Ross, NatureScot



Michael Hosek, Europarc
Federation



Yu-Fai Leung, North Carolina
State University



Naira Dehmel, Equilibrium
Research



Petri Ahlroth, Ministry of Environment



Ari-Pekka Auvinen, Finnish Environment Institute



Kari Lahti, Finnish Environment Institute

Quality Criteria and Standards for German National Parks

Case study 1 – Michael Hošek

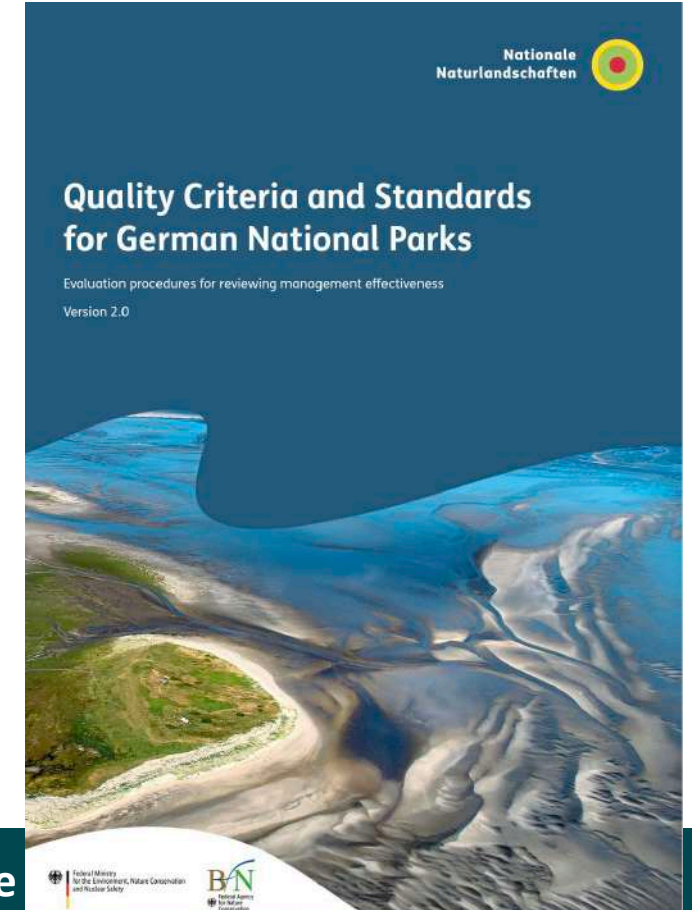
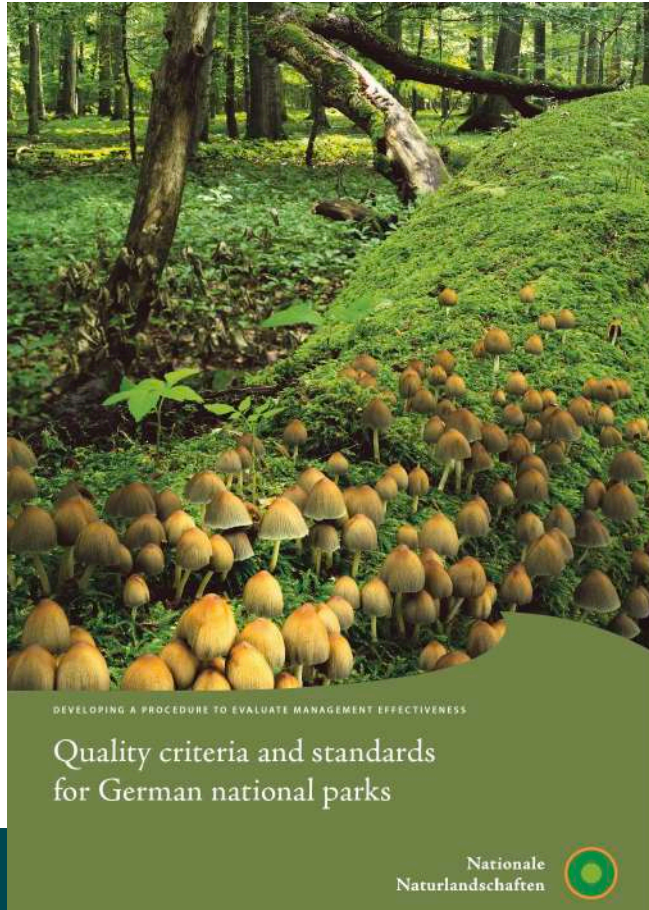
German national parks only

- Why?



EUROPARC Conference 2023 – Tribute to
 Where nature and people meet in

Regular assessment, regular methodology update



EUROPARC Conference 2023 – Tribute to our landscape
Where nature and people meet in harmony

Areas of assessment

- Framework conditions
- Organisation
- Protection of natural biodiversity and dynamics
- Management
- Cooperation and sustainable regional development
- External communication
- Education and nature experience
- Research and monitoring

Czech approach


1. Modification of the German criteria to Czech
 2. Establishment of the expert team
 3. Assessment
 4. Report – separately for each NP as well as
- All financially covered by the Czech Ministry (cheap...)



Hodnocení národních parků České republiky

Syntetická zpráva

Zpráva hodnotícího panelu
prosinec 2019

 Ministerstvo životního prostředí

Lessons learned

Pros

- Very accurately targeted assessment on a specific territory
- Clear and applicable recommendations
- Cooperation with stakeholders during the evaluation

Lessons learned

Cons

Quite demanding:

- Professional capacity
- time
- money



Connecting People & Parks
since 1973



Green List – pilot study for Europe

Case study 2 – Michael Hošek

EUROPARC Conference 2023 – Tribute to our landscape
Where nature and people meet in harmony

Green List – IUCN Global Standard



Robust governance system

Green List Committee

Green List Standard Committee

Green List Management Committee

Green List Operations Team

IUCN WCPA Regional Vice-Chairs

Expert Assessment Group for the Green List (EAGL)

- EAGLs are jurisdictional expert bodies convened by WCPA and approved by an assigned Reviewer. The jurisdiction of an EAGL is geographic (e.g. a country or region within a country) and is established and operates within the jurisdictions that have been approved by the Management Committee
- The primary tasks of an EAGL are to ensure that the IUCN Green List Standard is applicable in their jurisdiction and to evaluate PAs against the indicators of the Standard.

Project on modification of GL criteria to European conditions

- *“...EAGLs are jurisdictional expert bodies convened by WCPA and approved by an assigned Reviewer. The jurisdiction of an EAGL is geographic (e.g. a country or region within a country) and is established and operates within the jurisdictions that have been approved by the Management Committee*
- *The primary tasks of an EAGL are to ensure that the IUCN Green List Standard is applicable in their jurisdiction and to evaluate PAs against the indicators of the Standard...”*

Life Study on modification of GL criteria for Natura 2000

1. Modification of criteria
2. Stakeholders consultation
3. Pilot sites (Krkonoše (CZ), Kaldoaivi (FI), Kullaberg (SE))
4. Final report to the European Commission

Lessons learned

Pros

- Comparison of conditions and needs of PAs in Europe versus other regions and globally (we are very specific!)
- Pilot studies (self-evaluation)

Lessons learned

Cons

- The criteria have not been sufficiently modified for our conditions because of the link to the global criteria
- Complex and challenging governance structure (EAGL)
- Unclear who should pay - challenging process



Connecting People & Parks
since 1973



Monitoring to Deliver Healthy Ecosystems

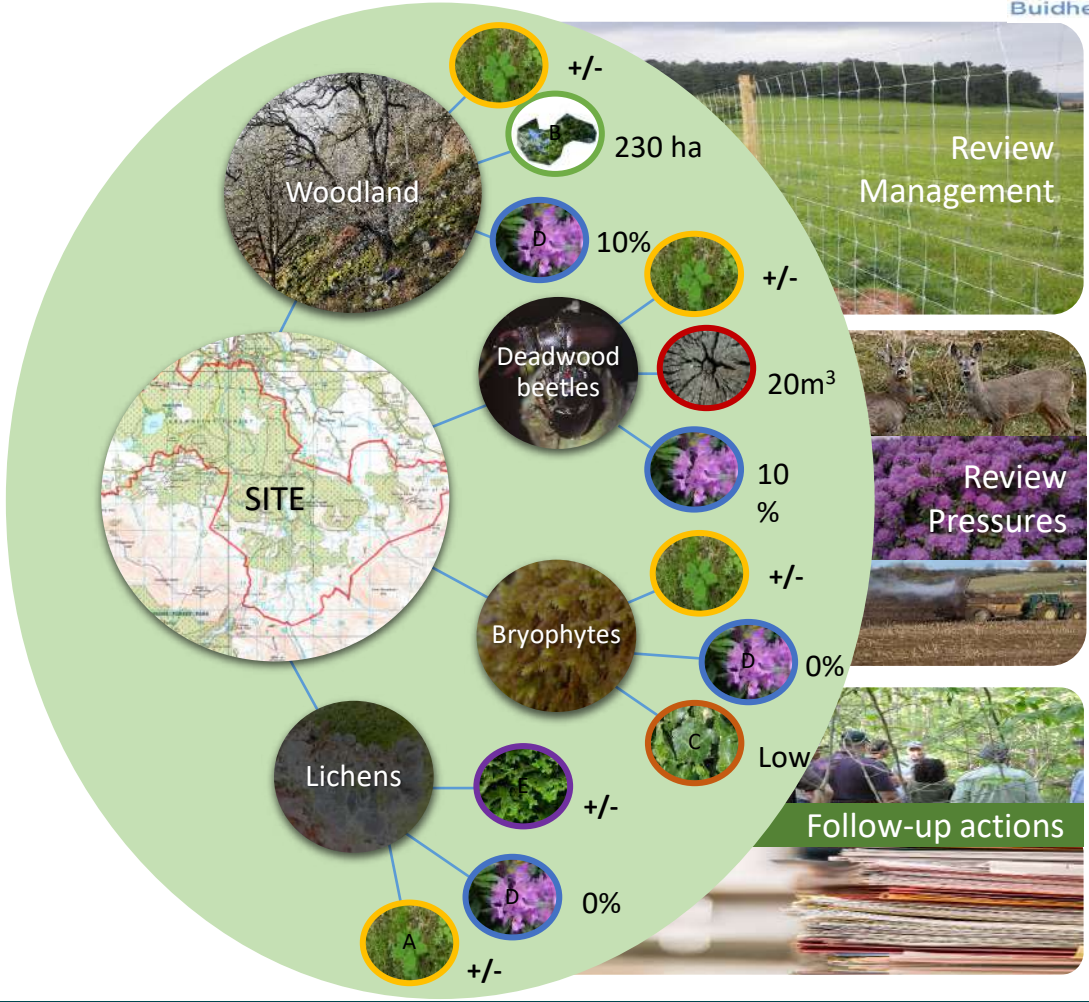
Scotland's protected areas

Lisa Davidson – Ecosystems Health Officer

Dave Genney – Protected Area Monitoring & Surveillance Team Manager

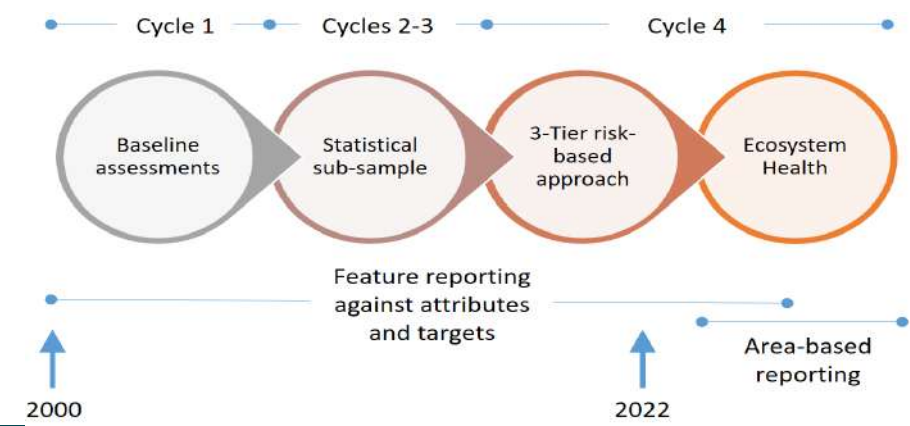
NatureScot

EUROPARC Conference 2023 – Tribute to our landscape
Where nature and people meet in harmony

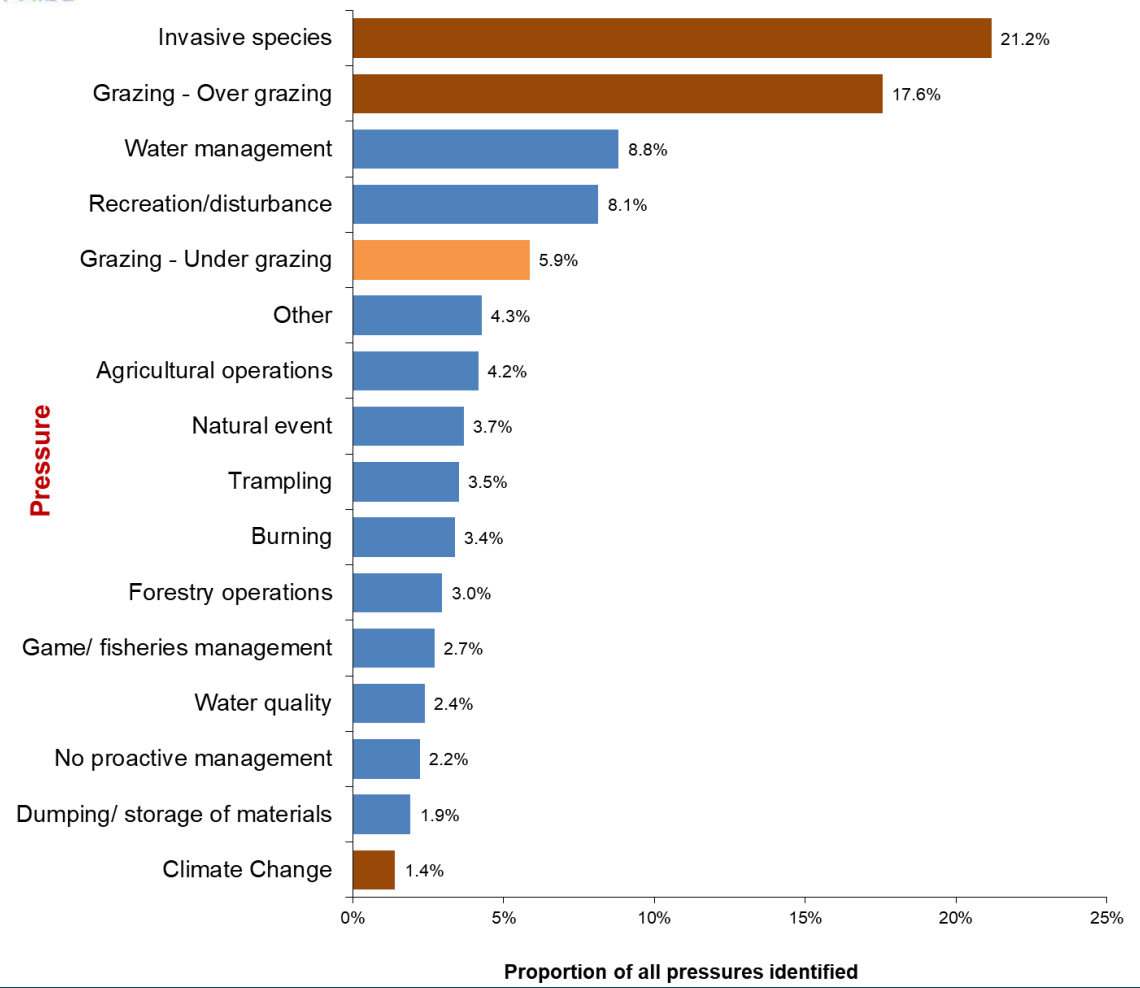
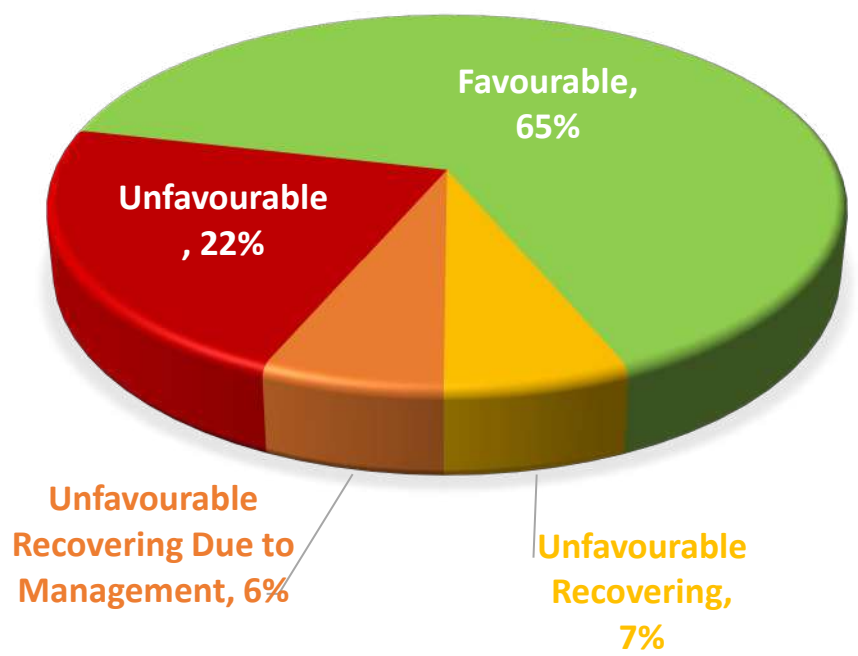


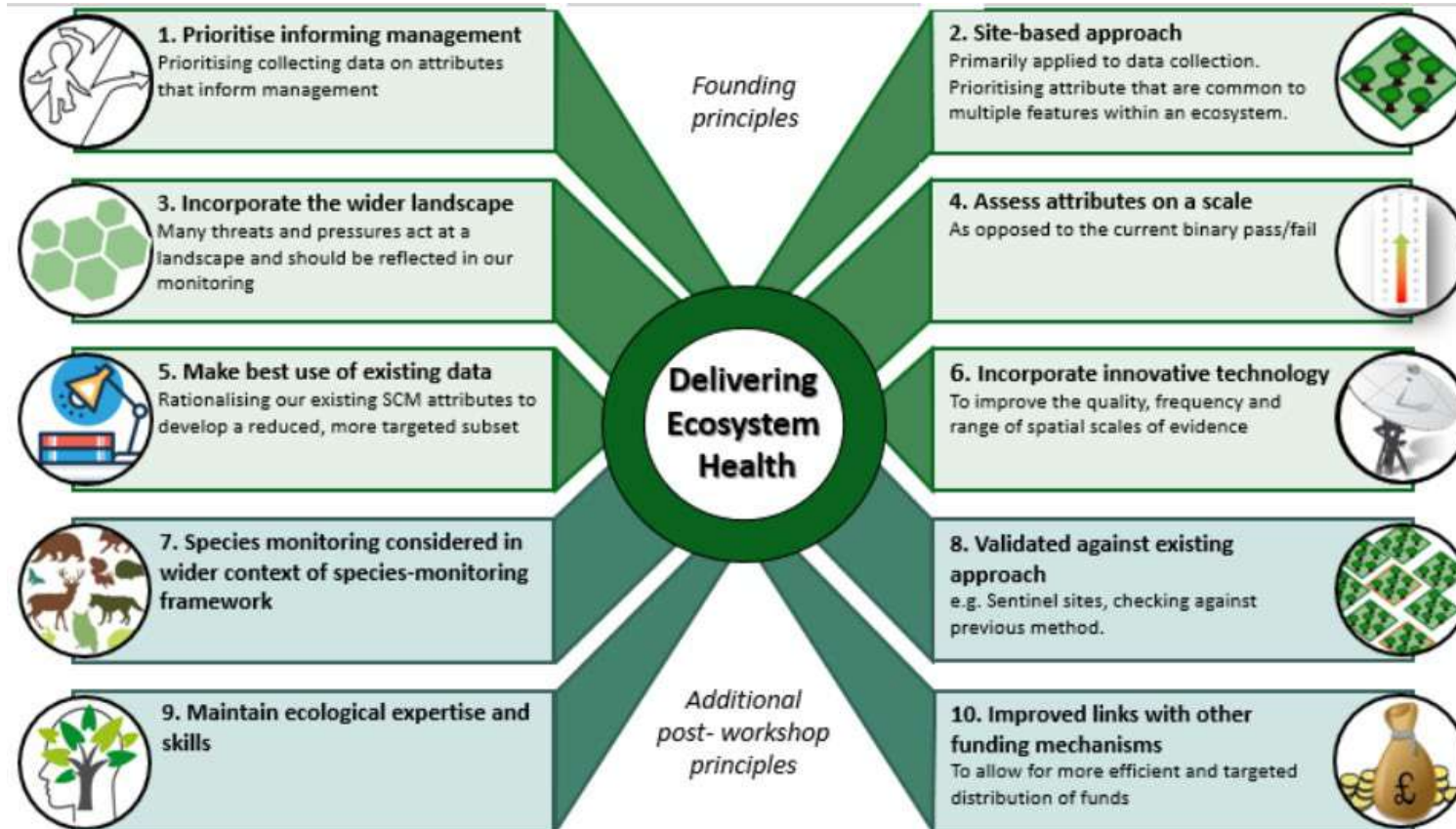
SCM monitoring

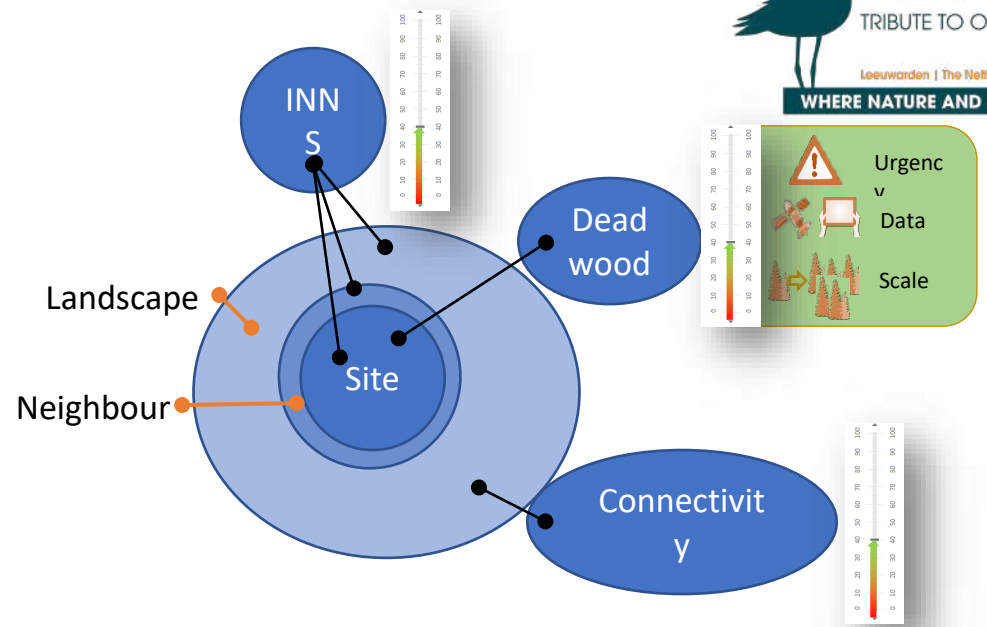
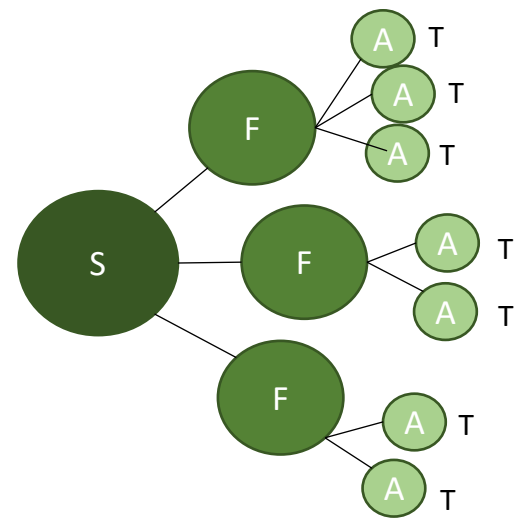
- Feature-based monitoring
 - Feature -> Attribute -> Target
- Attributes can be COMMON across features
- Targets can vary



Has our monitoring delivered favourable features?







Monitoring as it is today

- Feature base approach
- Condition monitoring focused
- Pass/fail targets
- Limited to feature scale
- Potentially 100s attributes

Ecosystem health approach

- Site based approach
- Informing management focused
- Gradient/ scaled approach
- Landscape scale inc.
- A reduced, rationalised set of indicators

Thank you!

Lisa.Davidson@nature.scot

Break

Back in 15...



Connecting People & Parks
since 1973



Management Effectiveness in your protected area

What methods are used?

How do you evaluate?

What do you with the evaluation evidence?

EUROPARC Conference 2023 – Tribute to our landscape
Where nature and people meet in harmony

Our challenges

Awareness and communication

Barriers to implementation

Resourcing management effectiveness

Staff skills and experience



Connecting People & Parks
since 1973



Implementing management effectiveness?

How do we address/overcome these challenges?

What do you need to be successful?

What resources, skills, tools and policy is needed?

How will you use management effectiveness?

EUROPARC Conference 2023 – Tribute to our landscape
Where nature and people meet in harmony

What do we do now?