



NPWS

An tSeirbhís Páirceanna
Náisiúnta agus Fiadhúlra
National Parks and Wildlife
Service

Wild Nephin National Park



Sam Birch, Regional Manager
National Parks & Wildlife Service



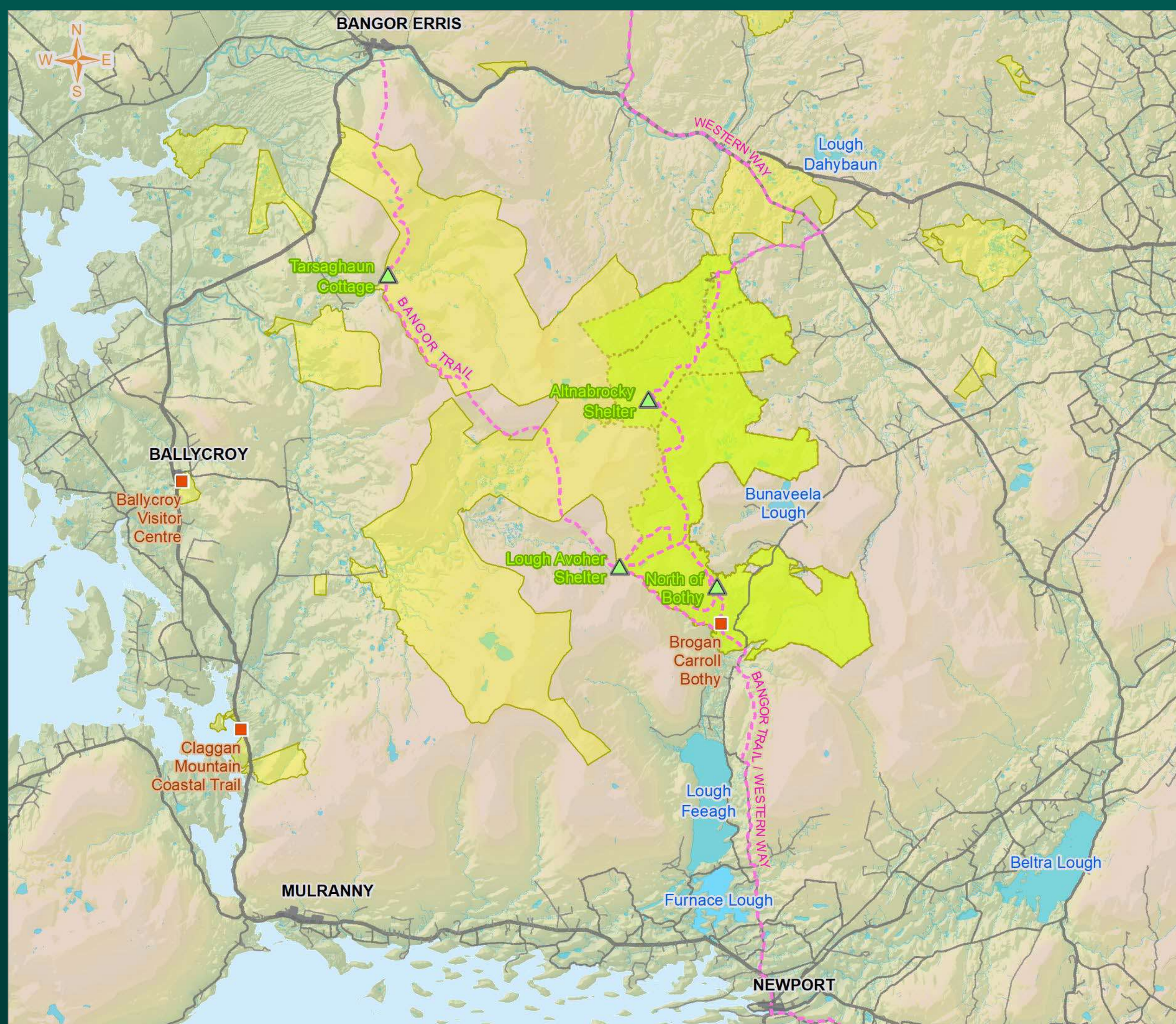
NPWS

An tSeirbhís Páirceanna
Náisiúnta agus Fiadhúlra
National Parks and Wildlife
Service

"Indeed the Nephinbeg range of mountains is I think the very loneliest place in this country, for the hills themselves are encircled by this vast area of trackless bog.....I confess I find such a place not lonely or depressing but inspiring. You are thrown at the same time back upon yourself and forward against the mystery and majesty of nature."

The Way That I Went, Robert Lloyd Praeger 1937





Wild Nephin National Park Conversion



-  Camp site
-  Mayo Dark Skies viewing point
-  Wild Nephin National Park boundaries
-  Conversion Plan Area
-  Bangor Trail Western Way

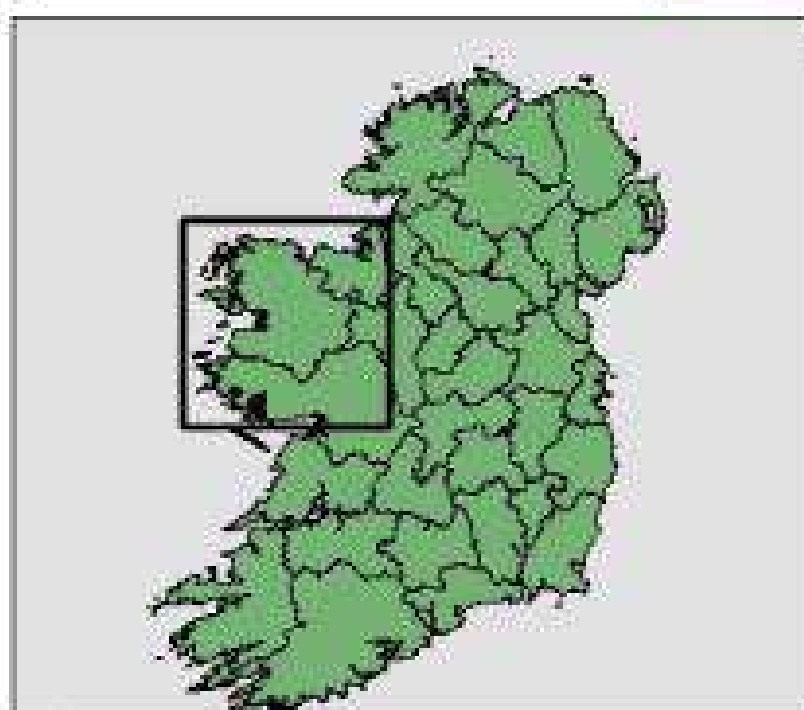
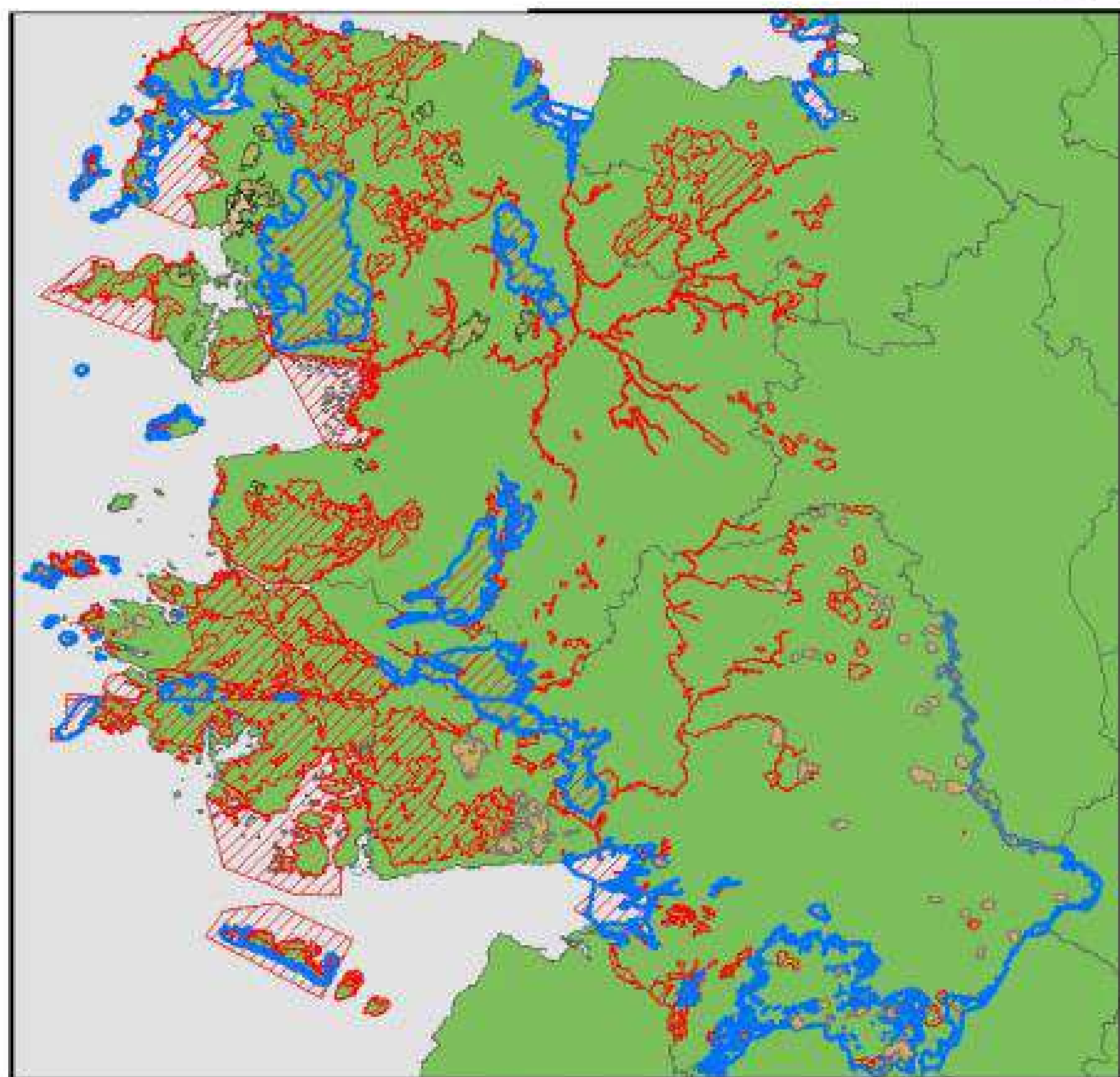


Compiled by Geographic Information Systems Unit, NPWS on 12/05/2022.

© Ordnance Survey Ireland (licence No. OSI-NMA-014). © National Parks and Wildlife Service, Department of Housing, Local Government and Heritage. © Government of Ireland. © Intermap's IfSAR digital terrain model (circa 2010).



An Roinn Tithíochta,
Rialtais Áitiúil agus Oidhreacht
Department of Housing,
Local Government and Heritage



0 30 60 Kilometers



Owenduff/Nephin SAC & SPA

Qualifying interests include:
Atlantic blanket bog, Salmon, Otter,
Merlin & Golden plover.



NPWS

An tSeirbhís Páirceanna
Náisiúnta agus Fiadhúlra
National Parks and Wildlife
Service

Background to Wild Nephin National Park

- The National Park lands were previously used for turbary, agriculture and recreational uses including fishing, shooting, and hillwalking
- Ballycroy National Park established in 1998
- Ballycroy Visitor Centre was opened in 2009
- The Nephin forest became part of the overall National Park area in 2017
- Wild Nephin National Park now circa 17,000 ha
- IUCN Category II



NPWS

An tSeirbhís Páirceanna
Náisiúnta agus Fiadhúlra
National Parks and Wildlife
Service

Habitats









NPWS

An tSeirbhís Páirceanna
Náisiúnta agus Fiadhúlra
National Parks and Wildlife
Service

Species of Note





NPWS

An tSeirbhís Páirceanna
Náisiúnta agus Fiadhúlra
National Parks and Wildlife
Service





NPWS

An tSeirbhís Páirceanna
Náisiúnta agus Fiadhúlra
National Parks and Wildlife
Service



Ballycroy Visitor Centre



Free admission
Free WiFi
Tearoom
Ample car parking







NPWS

An tSeirbhís Páirceanna
Náisiúnta agus Fiadhúlra
National Parks and Wildlife
Service

National Park Loop Walks





NPWS

An tSeirbhís Páirceanna
Náisiúnta agus Fiadhúlra
National Parks and Wildlife
Service

Bangor Trail 40km Newport to Bangor

*The Bangor Trail – offering
wild and ‘green’
recreational experiences*





NPWS

An tSeirbhís Páirceanna
Náisiúnta agus Fiadhúlra
National Parks and Wildlife
Service

Shelters and Cottages (Bothies)









Together with 'Friends of Mayo
Dark Skies' we have
complemented and developed
our environmental education
programme.

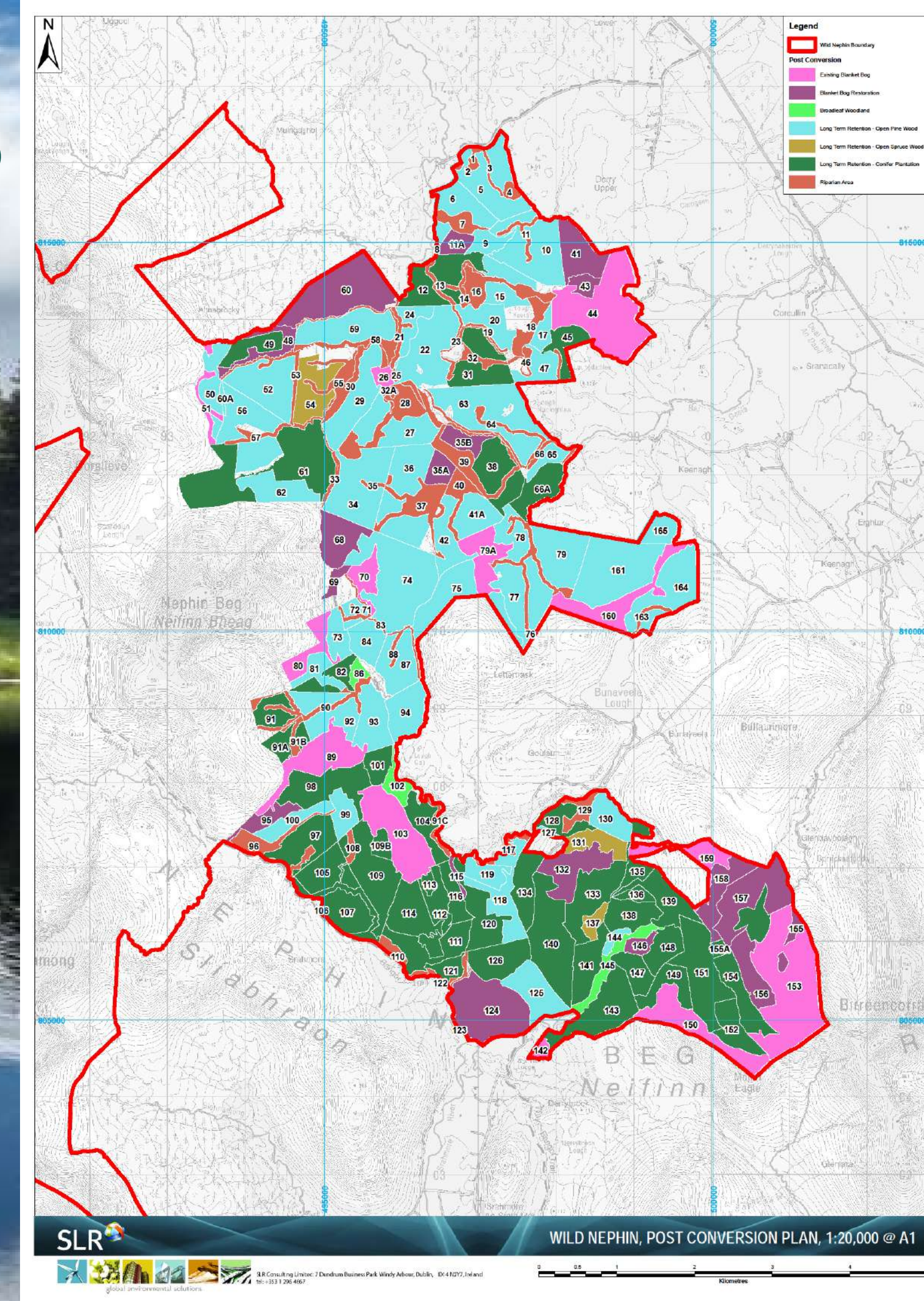
Mobile Planetarium

Dark Sky Festival

**Received Gold Tier
accreditation as an Intl Dark
Sky Park in May 2016**

Wild Nephin Future Plans

- 15 year Conversion Plan
- Native Woodlands
- Bog Restoration
- Invasive Species
- Aquatic Buffers
- Additional Loop Walks
- Western Way to North Mayo Coast
- Bothy Restoration
- Dark Sky Park Developments
- Planetarium & Observatory





Thank You!