

PROTECTED AREAS
Life insurance for a changing
planet
2011-2020

Trevor Sandwith



The 5th IUCN World Parks Congress DURBAN 2003



"we must break with traditional thinking, catalyze a new vision, and join hands in new partnerships"

Climate change was not identified as a critical issue

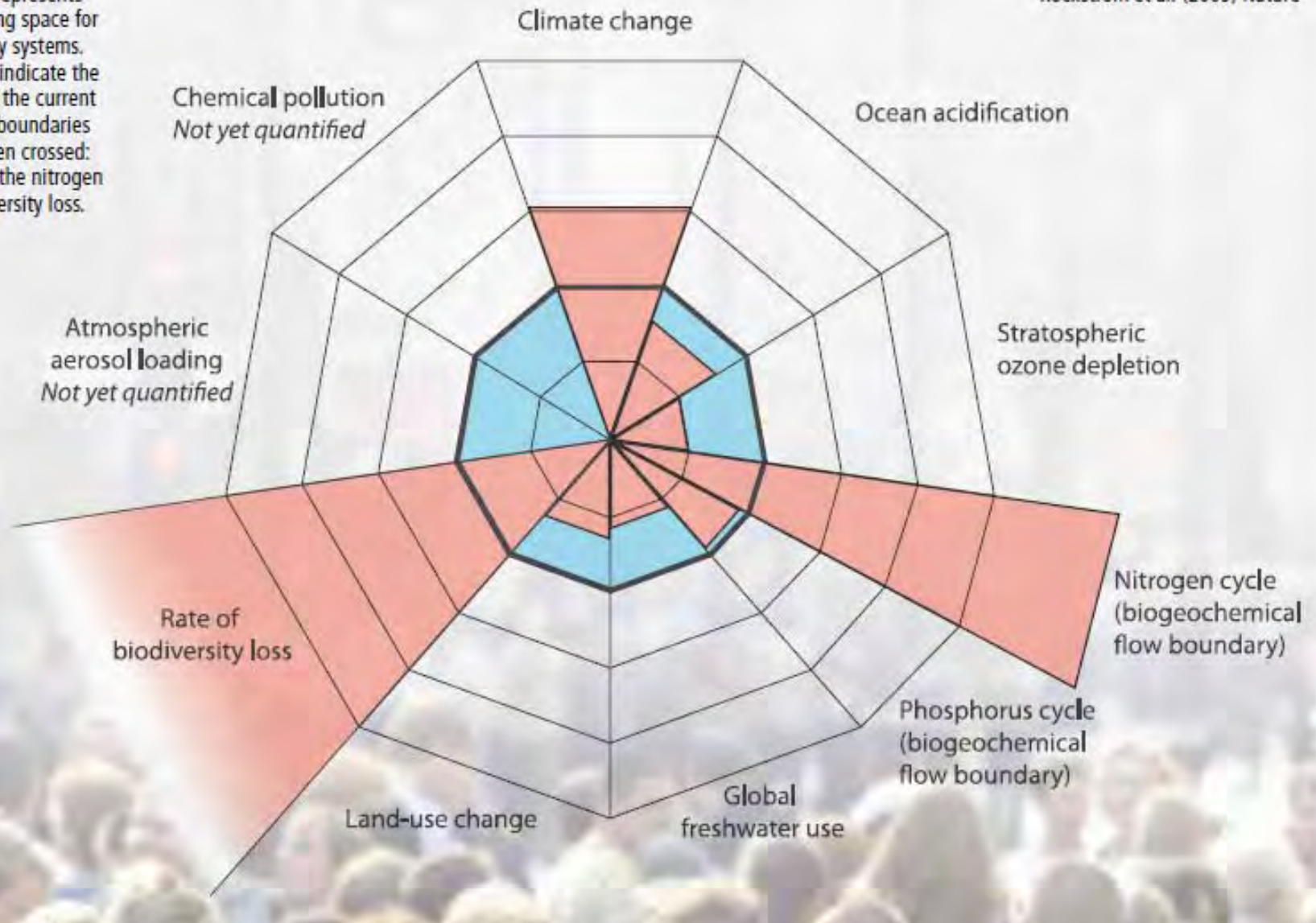
Adoption of the CBD Programme of Work on Protected Areas Kuala Lumpur 2004



Global Development Challenges

Rockström et al. (2009) *Nature*

The inner circle represents the safe operating space for the key planetary systems. The red wedges indicate the best estimate of the current situation. Three boundaries have already been crossed: climate change, the nitrogen cycle and biodiversity loss.



Global Biodiversity Outlook 3



Convention on
Biological Diversity



2010
Year of Biodiversity

Status and trends of the components of biological diversity



Trends in extent of selected
biomes, ecosystems, and
habitats



Trends in abundance and
distribution of selected
species



Change in status of
threatened species

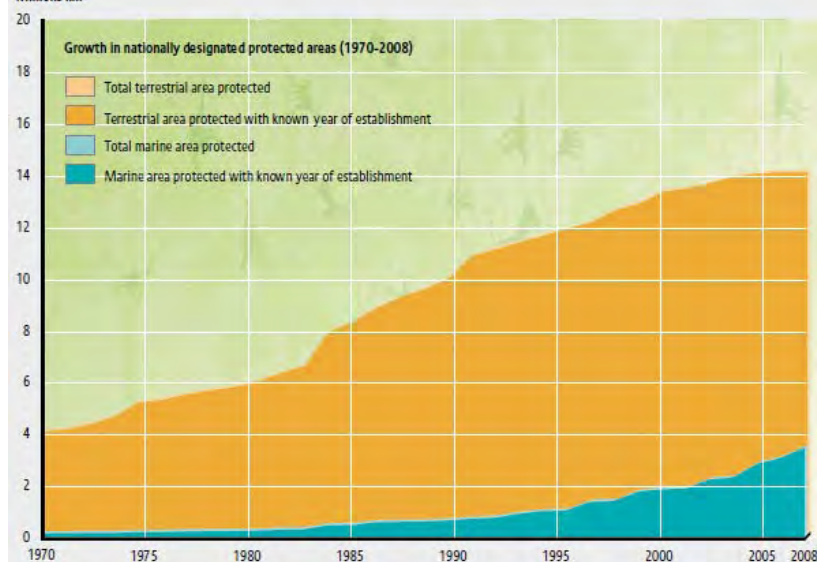


Trends in genetic diversity of domesticated
animals, cultivated plants, and fish species
of major socio-economic importance



Coverage of protected areas

Millions km²



The Strategic Plan for Biodiversity 2011-2020

Take effective and urgent action to halt the loss of biodiversity to ensure that by 2020 ecosystems are resilient and continue to provide essential services, thereby securing the planet's variety of life, and contributing to human well-being, and poverty eradication





Climate change negotiations

- Collectively aim to slow, halt and reverse **forest cover and carbon loss**
- **Deliver multiple-benefits for sustainable livelihoods and biodiversity**
- Enhance action on adaptation, including on **ecosystem-based approaches**





Strategic Plan: TARGET 11

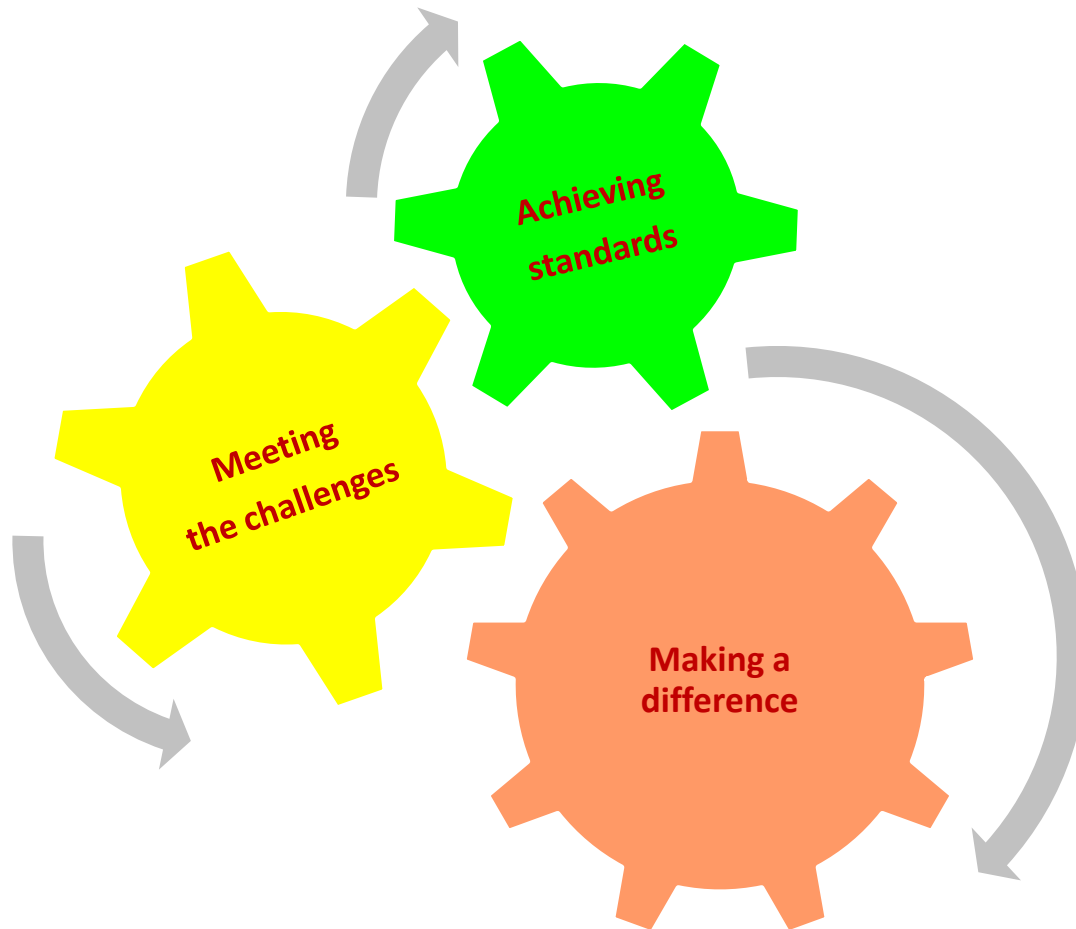
At least

17 % of terrestrial and inland water, and
10 % of coastal and marine areas,

especially areas of particular importance for biodiversity and ecosystem services, are conserved

through **effectively and equitably managed**,
ecologically representative and well-connected systems of protected areas, and
other **effective area-based conservation measures**,
and integrated into the wider landscape and seascape.

What does this mean for the management of protected areas?



1. Achieve effective management

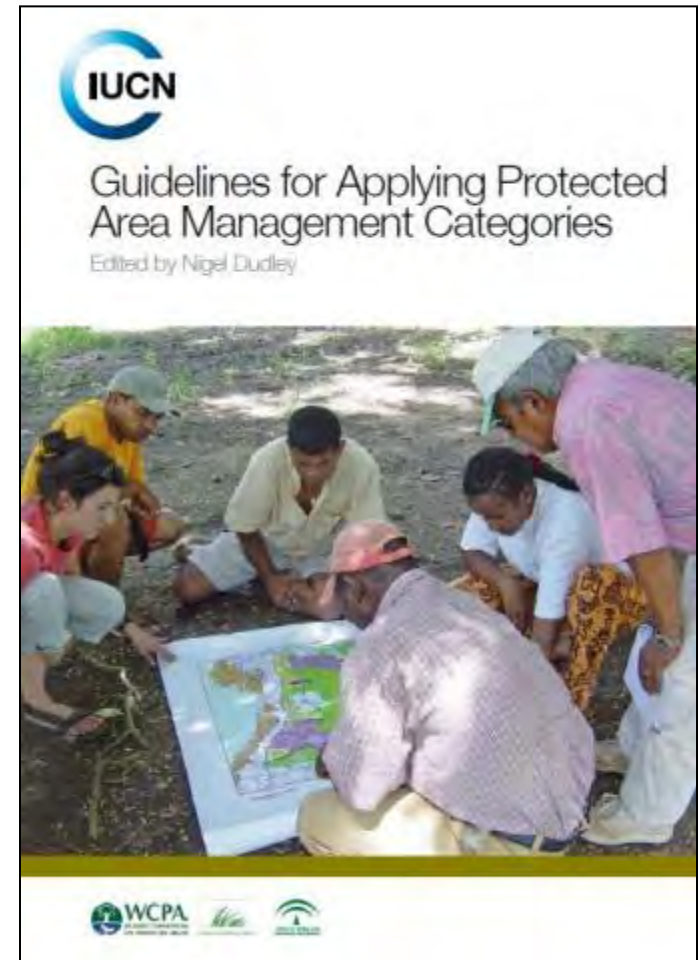


Standards and guidance

- World Heritage
- Categories
- Management effectiveness assessment



Global professional curriculum and competence standards



1 + Achieve effective performance



The IUCN Green List of well managed protected areas (??)

Recognize and measure progress, celebrate success, innovation and endeavour in protected area management



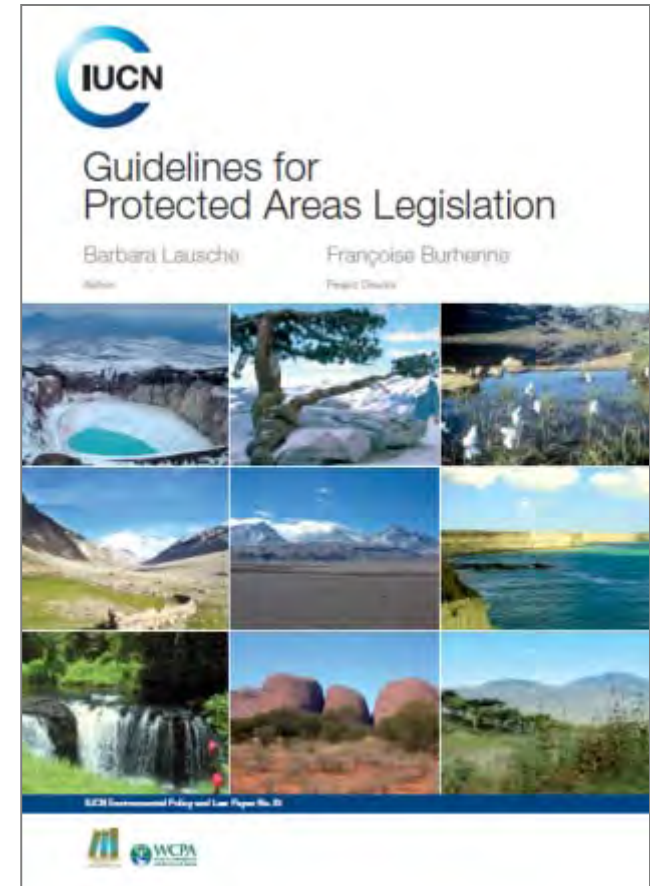
2. Facilitating equitable governance



- Focus on recognition of all PA governance types in the production landscape/seascape



- Address inadequacies in protected area legislation



Governance type	A. Governance by Government			B. Shared Governance			C. Private Governance			D. Indigenous Peoples & Community Governance	
	Federal or national ministry or agency	Local/municipal ministry or agency in charge	Government-delegated management (e.g. to an NGO)	Trans-boundary management	Collaborative management (various forms of pluralist influence)	Joint management (pluralist management board)	Declared and run by individual land-owner	...by non-profit organisations (e.g. NGOs, univ. etc.)	...by for profit organisations (e.g. corporate land-owners)	Indigenous bio-cultural areas & Territories-declared and run by Indigenous Peoples	Community Conserved Areas - declared and run by traditional peoples and local communities
Category (manag. objective)											
I - Strict Nature Reserve/ Wilderness Area											
II – National Park (ecosystem protection; protection of cultural values)											
III – Natural Monument											
IV – Habitat/Species Management											
V – Protected Landscape/ Seascape											
VI – Managed Resource											

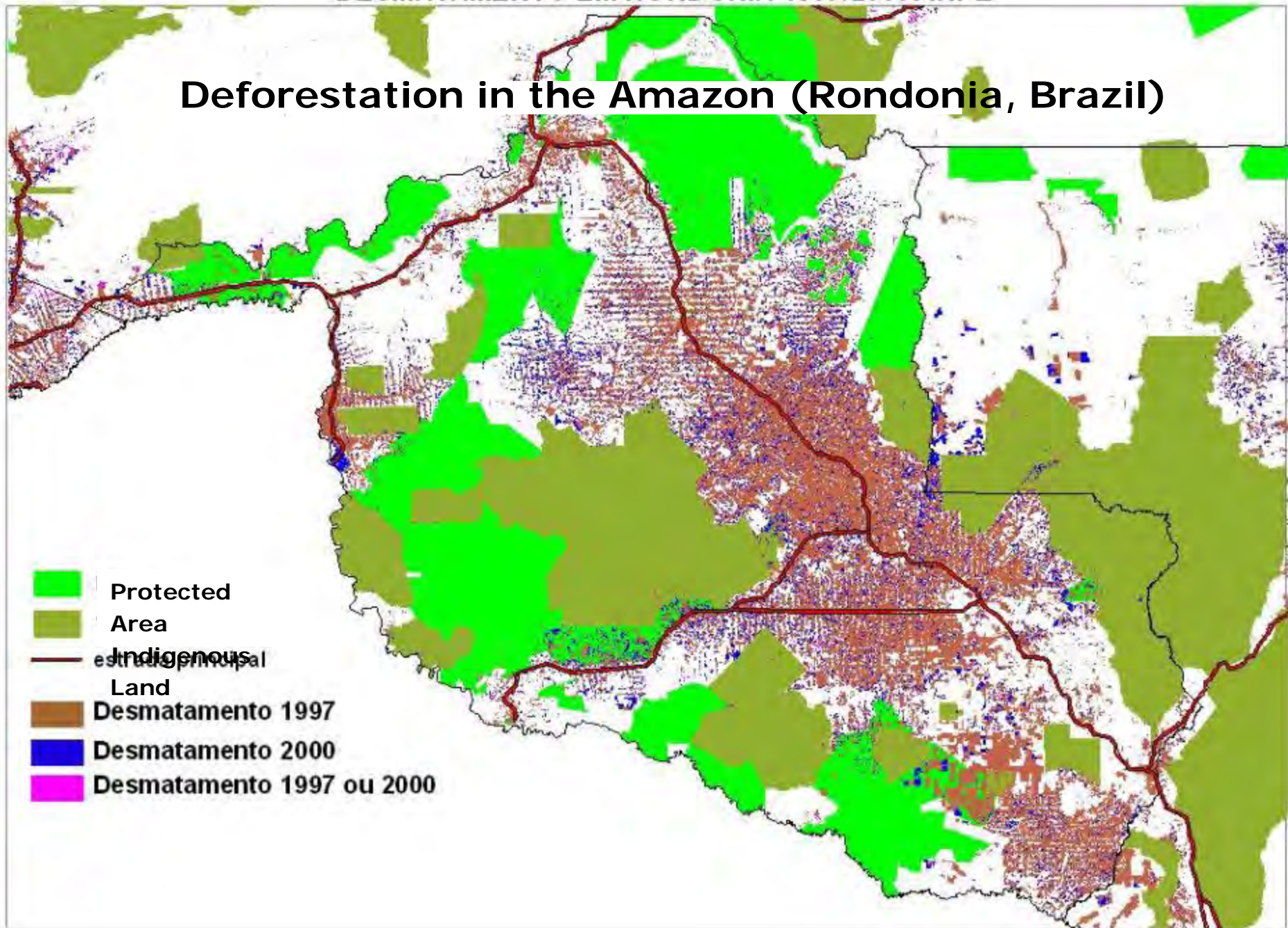
2+ Facilitate equitable governance

Making a
difference

- Contribute towards social assessment of PAs
- Enable landscape, seascape scale multiple agency , biosphere reserve and transboundary protected areas governance
- Pilot, test and demonstrate Access and Benefit Sharing arrangements



Deforestation in the Amazon (Rondonia, Brazil)



3. Making the case for sustainable financing and incentives

Achieving
standards

- A global assessment of PA financing
- Application of a suite of financing mechanisms (government funding, trust funds, payments for ecosystem services, mitigation offsets)

Meeting
the
challenges



4. Meeting global challenges

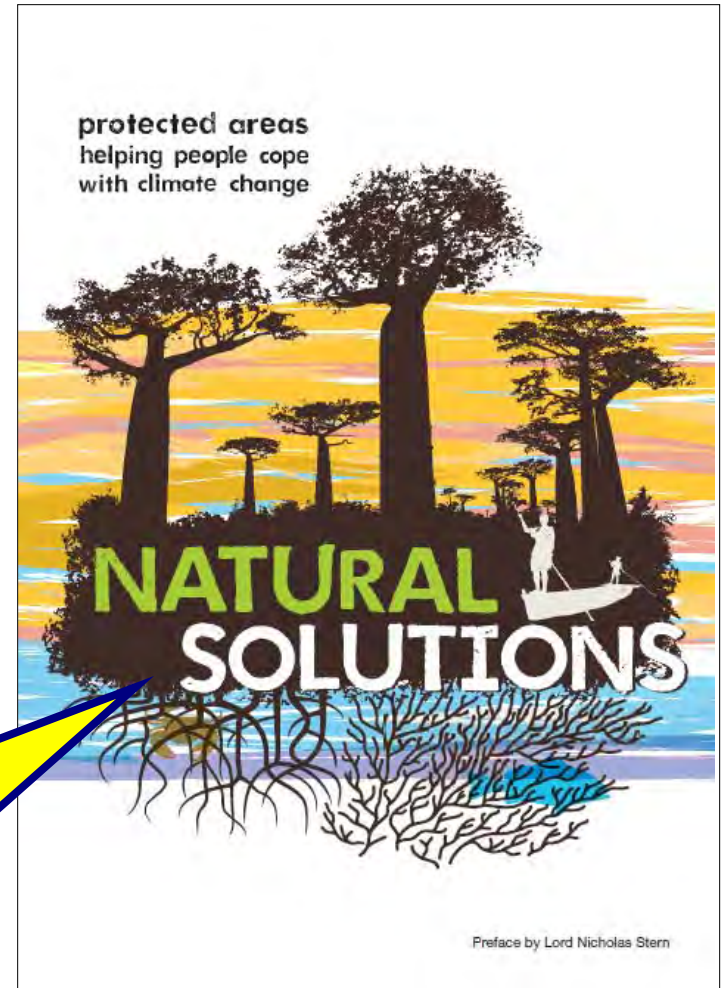
Meeting
the
challenges

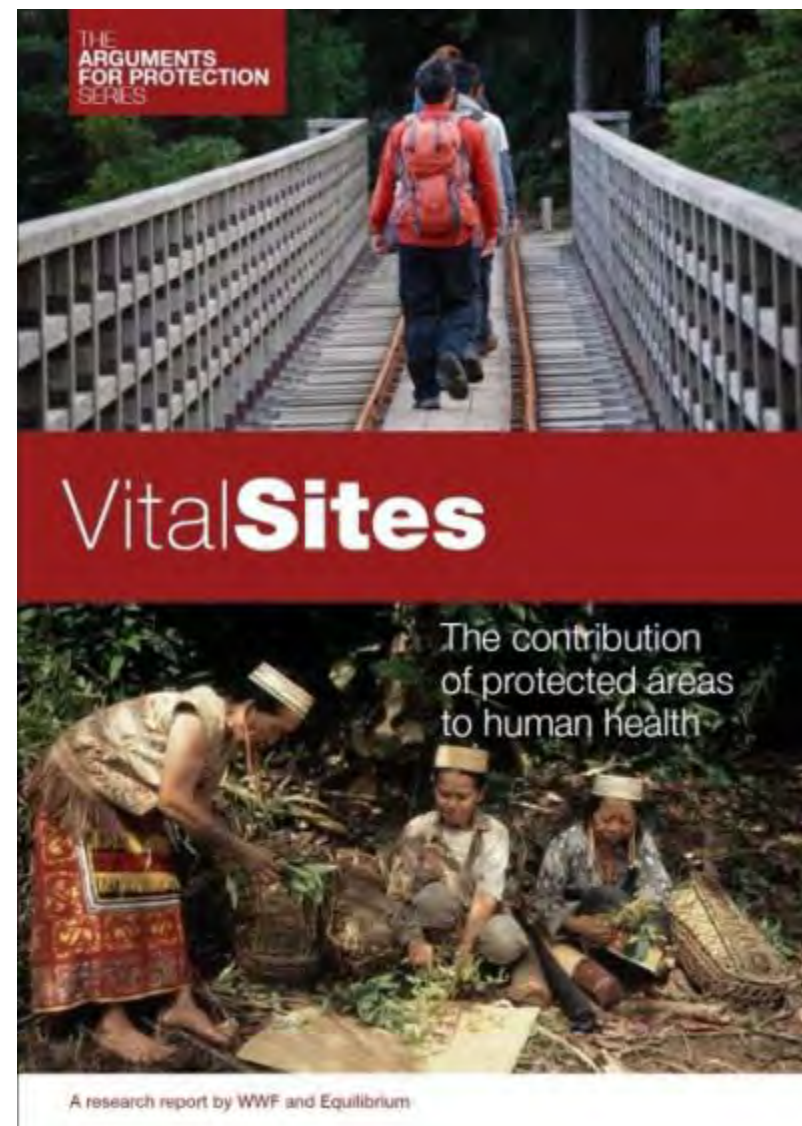
Developing
guidance to help
PA manager meet
global challenges
to PA systems

Compiling evidence
of how PA systems
can contribute to
addressing global
challenges

"This book clearly indicates
for the first time how
**protected areas contribute
significantly to reducing the
impacts of climate change ...**"

- LORD NICHOLAS STERN







News

Articles

Videos

Images

Books

Health & Medicine

Mind & Brain

Plants & Animals

Earth & Climate

Space & Time

Matter

Science News

Share Blog Cite

Green Environments Essential for Human Health, Research Shows

ScienceDaily (Apr. 26, 2011) — Research shows that a walk in the park is more than just a nice way to spend an afternoon. It's an essential component for good health, according to University of Illinois environment and behavior researcher Frances "Ming" Kuo.

See Also:

Health & Medicine

- [Health Policy](#)
- [Children's Health](#)

"Through the decades, parks advocates, landscape architects, and popular writers have consistently claimed that nature had healing powers," Kuo said. "But until recently, their claims haven't



Research confirms that the impacts of parks and



INTERNATIONAL CONGRESS 2010

***Healthy Parks
Healthy People***

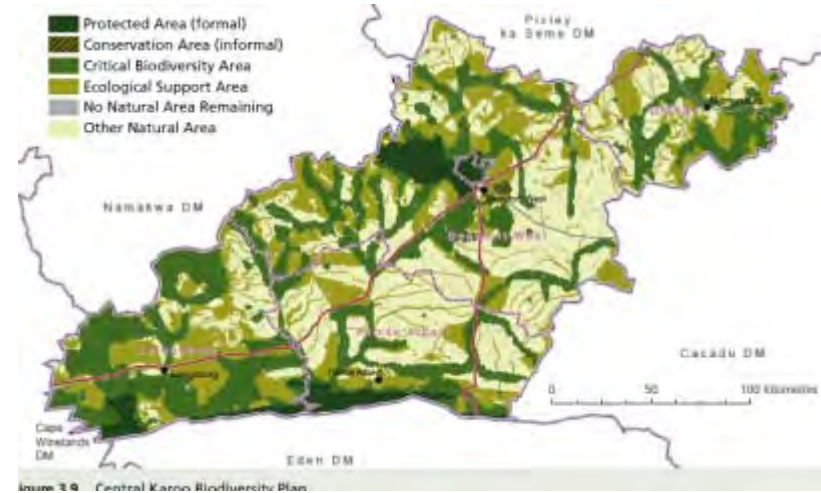
<http://www.hphpcentral.com>

4 + Meeting global challenges

Making a difference

Developing guidance for embedding biodiversity and PAs into development and land-use planning

Achieving sectoral support for the critical role of PA systems, management and governance in addressing global challenges



5. Communication

Achieving
standards

Standard print,
media, web, news,
Workshops,
conferences

Meeting
the
challenges

Restrictions on
travel

Enhanced
communication
technologies



5+ Using the power of social networks



protectedplanet.net

6th World Parks Congress 2014



- ✓ Locking in the new paradigm of relevance:
natural solutions to human needs
- ✓ IUCN global and regional leadership for results

Visioning the future and responding



Illuminating success and acting

