

**EXAMPLES
OF
APPROACHES TO INTEGRATION IN UK**

**EDWARD HOLDAWAY
Europarc Atlantic Isles**

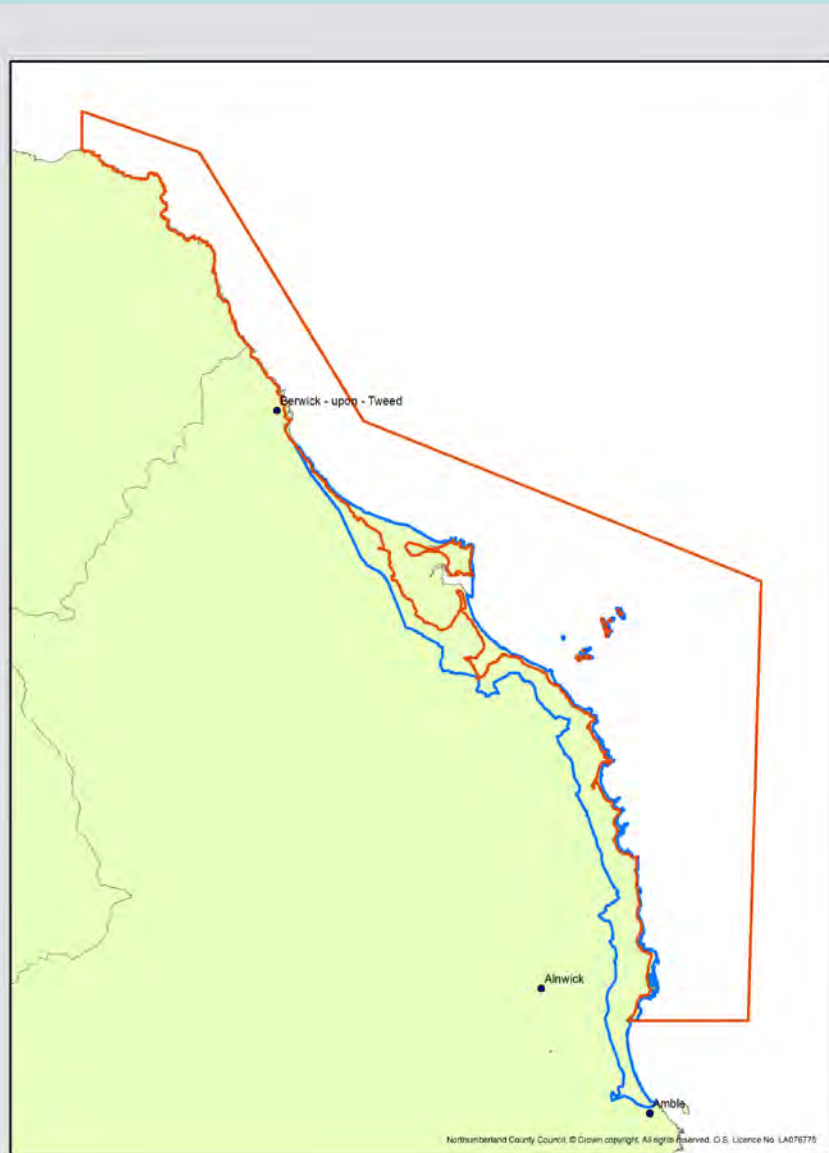
NORTHUMBERLAND AONB - ENGLAND

2 Designations

AONB & European Marine Site

- **Overlap in the inter-tidal area**
- **Separate Management Organisations**
- **Joint management plan – numerous overlaps in terms of issues to be dealt with e.g.**

- **Climate change**
- **Natural environment**
- **Historic environment**
- **Environmental quality – water**
- **Enjoying the area**
- **Living & working in the area**
- **Land use & marine planning**

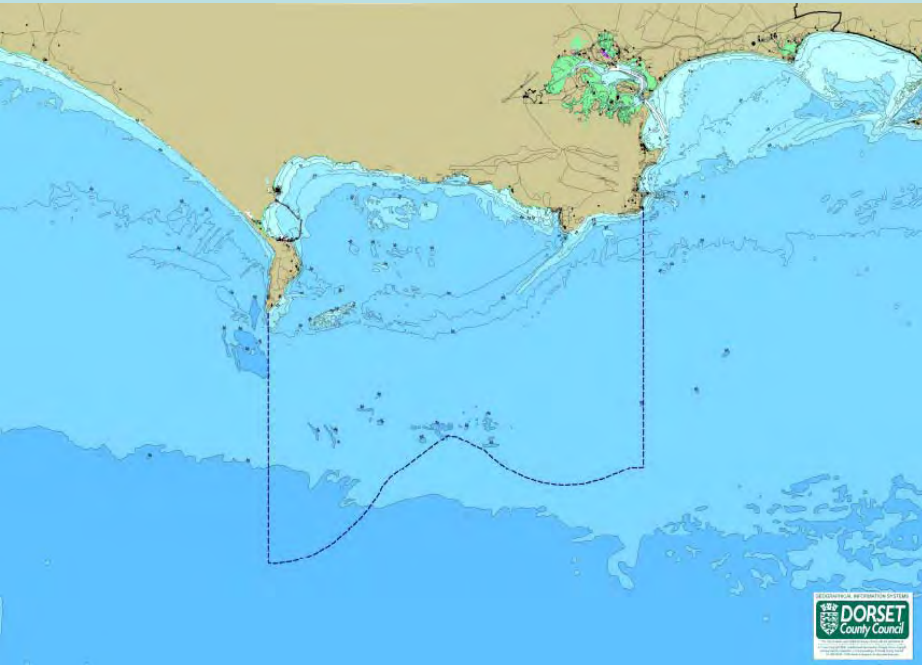


NORTH YORK MOORS NATIONAL PARK - ENGLAND



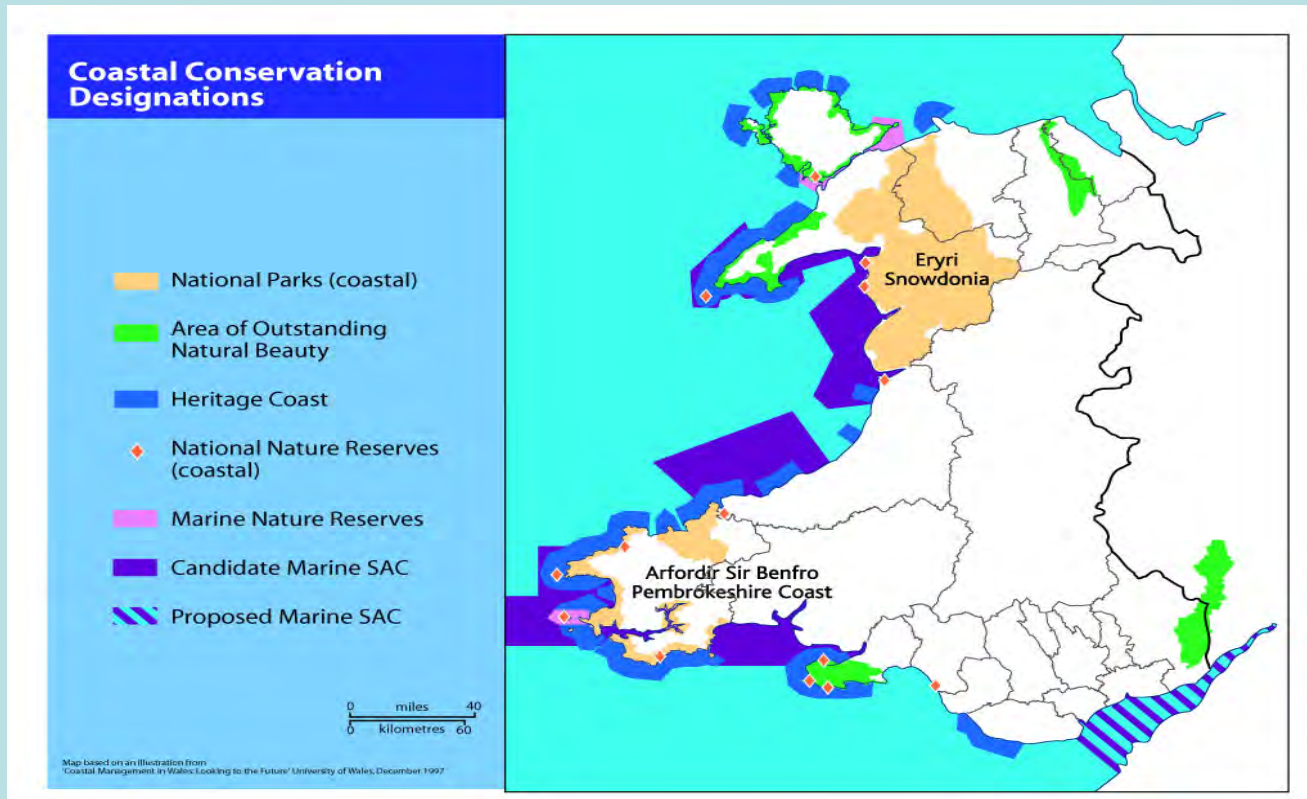
- **N Yorkshire & Cleveland Coastal Forum**
 - Strategy for the coast
 - National Park key player
- **Heritage Coast Plan**
 - health of coastal waters
 - coastal defences & natural processes
 - Renewable energy
 - Offshore minerals
- **Biodiversity Action Plan**
 - Marine sub-tidal
 - Rocky shores
 - Maritime Cliffs
- **National Park Plan**
 - objectives for the coast inc marine area

DORSET AONB - ENGLAND

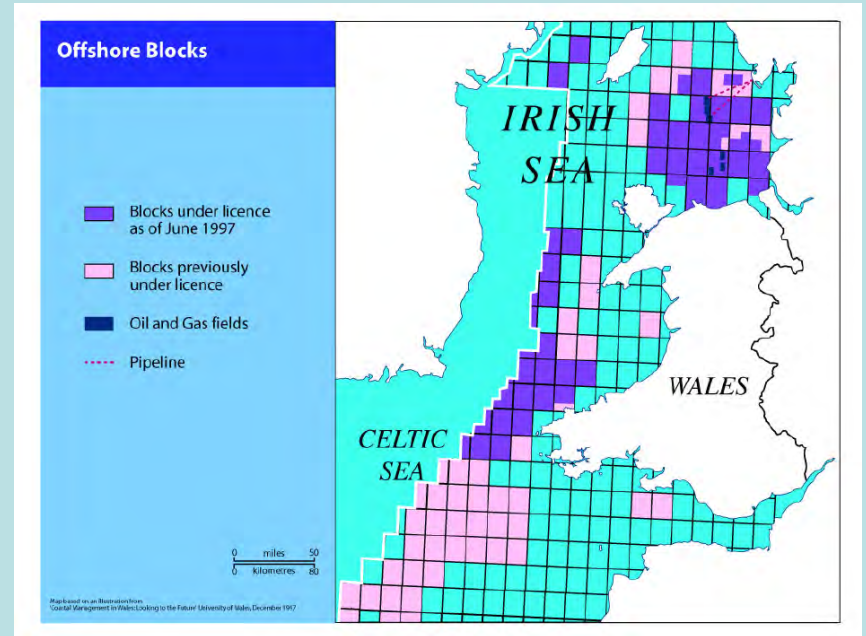
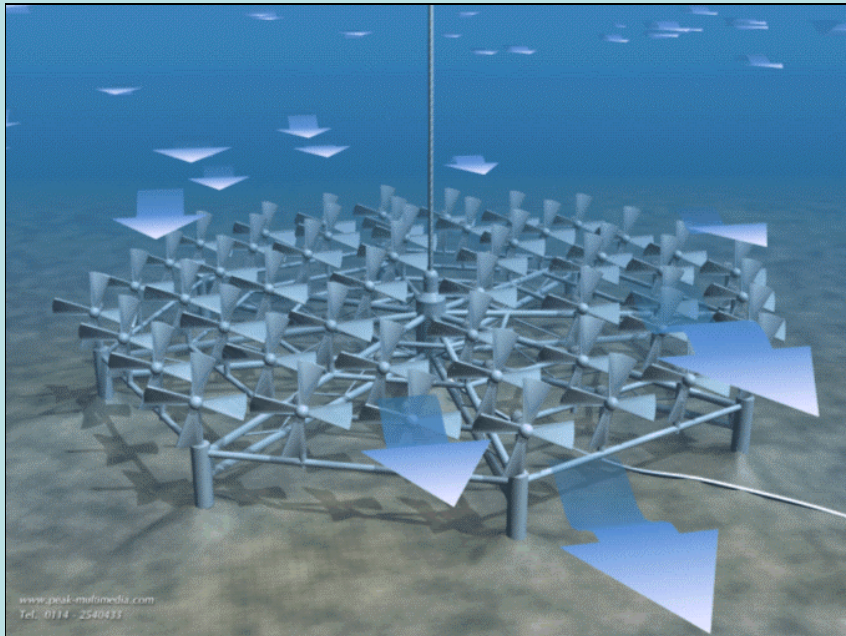


- **Many designations on coast**
 - World Heritage site
 - Heritage Coast
 - Coastal SAC
- **No spatial plan linking land & sea**
- **Dorset C-Scope Project**
 - Framework for integrating land & sea management
 - tools for achieving sustainable coastal economies & environments
 - achieving commitment to ICZM

PEMBROKESHIRE COAST NATIONAL PARK -WALES



PEMBROKESHIRE COAST NATIONAL PARK -WALES



PEMBROKESHIRE COAST NATIONAL PARK -WALES



PEMBROKESHIRE COAST NATIONAL PARK -WALES

VOLUNTARY RESPONSE

WALES ICZM STRATEGY – Importance of NPs and AONBs recognised

WALES COAST & MARITIME PARTNERSHIP

PEMBROKESHIRE COASTAL & MARINE NETWORK

= Pembrokeshire Coastal Partnership – statutory bodies

+ Pembrokeshire Coastal Forum – wider community

+ Projects like the Pembrokeshire Marine Code

+ Pollution response strategy

PEMBROKESHIRE COAST NATIONAL PARK -WALES

VOLUNTARY RESPONSE THE SHORTCOMINGS

can be effective but:

- No statutory basis**
- No formal basis for spatial plans connecting land & Sea**
- No long term security of funding**
- Marine protected areas nature rather than landscape driven**
- Awareness of the many aspects of the connection is lacking**
- Marine dimension is not understood**