

EUROPARC Federation

Report to Council

25th March 2011



Title:

Crib Sheet for Council Members

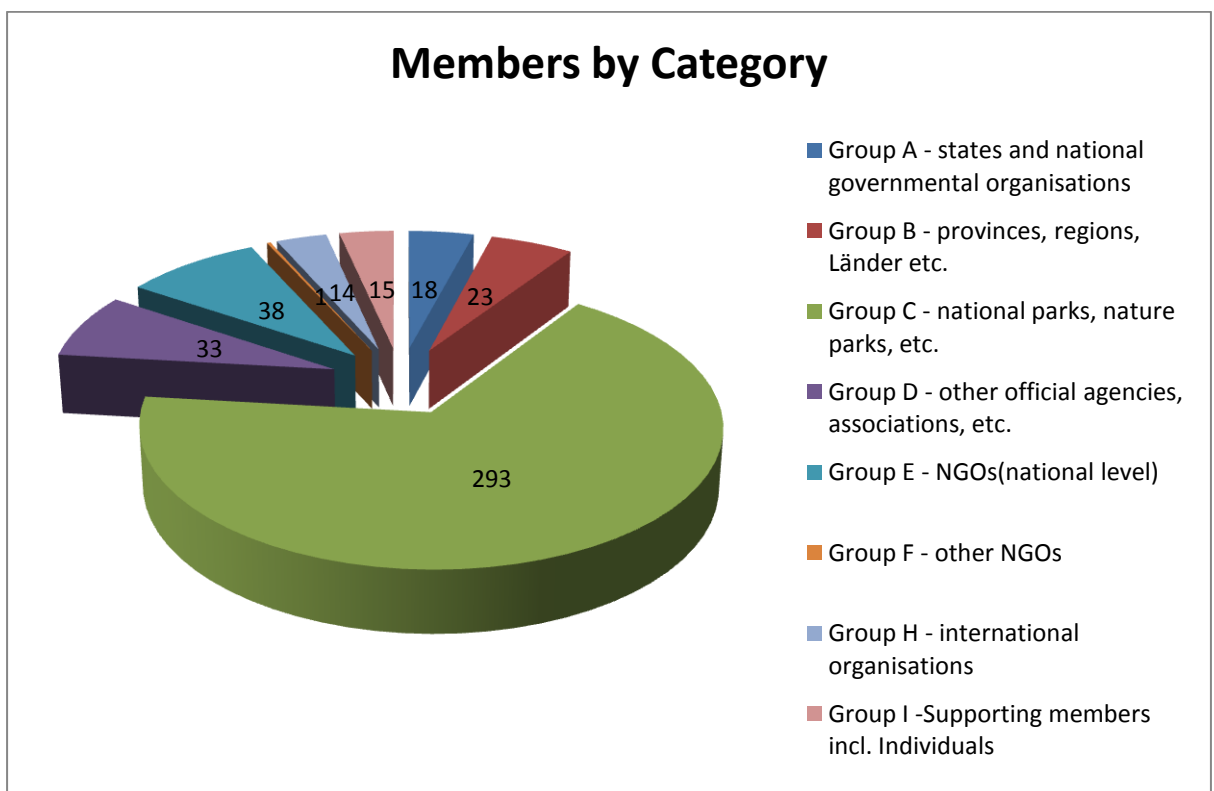
Summary :

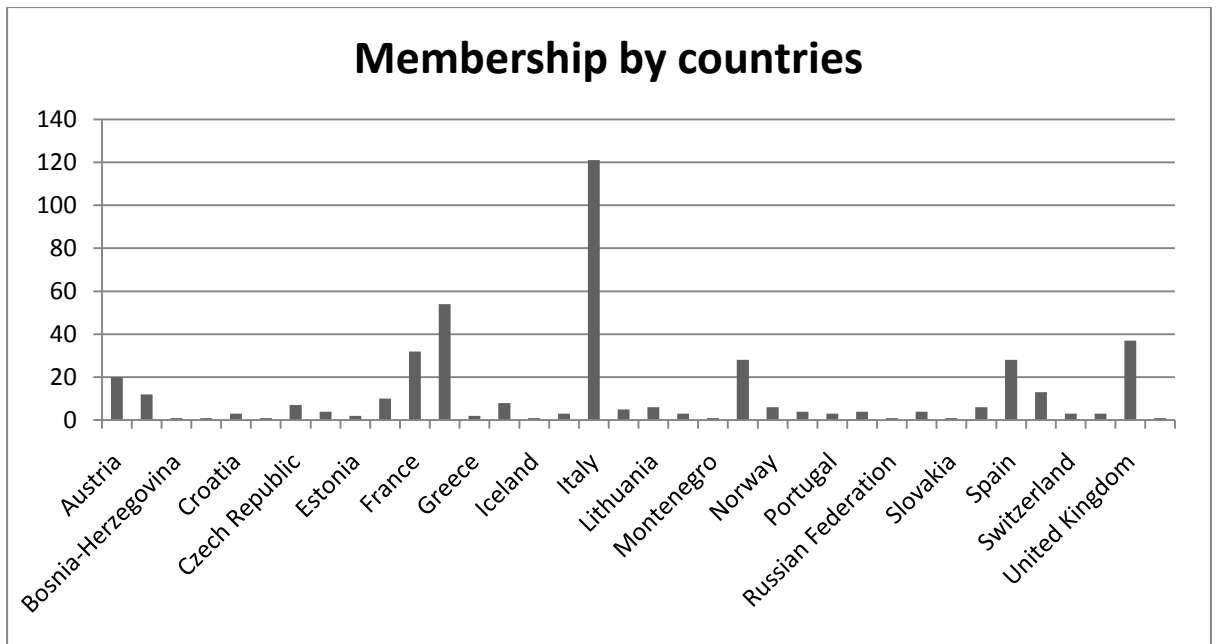
To provide Council Members with essential information on the Federation to be used at representative functions.

Crib sheet for the council – Important fact about the EUROPARC Federation

Top ten facts

- The EUROPARC federation is Verein, a members associations registered in Germany thereby we are governed the German laws governing NGO's , such as tax .
- The EUROPARC Federation , known as the "Federation of Nature and National Parks of Europe". was founded in 1973 in Basel (CH) Switzerland. EUROPARC headquarters and member of staff was opened in Grafenau (DE) in 1986. The Seat of the organisation moved to Regensburg in 2010. We have a additional office within the IUCN offices in Brussels.
- Currently we have 435 members in 36 countries, a stable number for the last two years. The biggest majority of our members are individual protected areas, the remainder of the membership being, governments, agencies, and other organisations. The membership meet annual at the general assembly and elect a council, treasurer and president. The respective function of the GA , council and president are found in the statutes and regulation of the Federation. At least half of the Federation budget comes from Membership fees, the remainder from various funding sources and projects.





- The Council appoint a Director to manage the affairs of the Federation. The Director is responsible for all operational matter and reports to the council.

The Direct appoint all staff and has delegated authority form the president on all contract and business matter of the Federation. Currently there are 7 Full Time Equivalent posts. The federation contracts out functions such as bookkeeping, graphic design , tax accountancy and legal advise.
- The Federation has authorised over the past 20 year EUROPARC “sections” to be created. These have arisen for different purposes and have differing governance models. Essentially they relate the European experience to a national or regional level. All section need to have their statutes and aims agreed with the EUROPARC federation and have permission to use the EUROPARC Logo (which is owned and registered to EUROPARC). Section operate autonomously to the Directorate , although reporting and workplanning has recently been agreed between them. There are currently 7 EUROPARC sections , Nordic Baltic, Atlantic Isles, France, Germany, Italy, Spain and Czech Republic.
- The Council approves the creation of Working Group to take forward the work of the federation. The procedures and regulations for setting up working groups are in the Working Groups guidelines paper. Currently there are 4 working groups 2 standing committees a lobbying forum. Each working group submits a “road map” for the next two years of their work and this is incorporated into the federations overall workplan. Council member are expected oversee the work of a given working group. Staff members also assist working groups where possible.

Standing Committees Charter Evaluation Committee ; Chair Patrizia Rossi

Transboundary Evaluation Committee (STEC) ; Chair Martin Solar.

Working Groups -

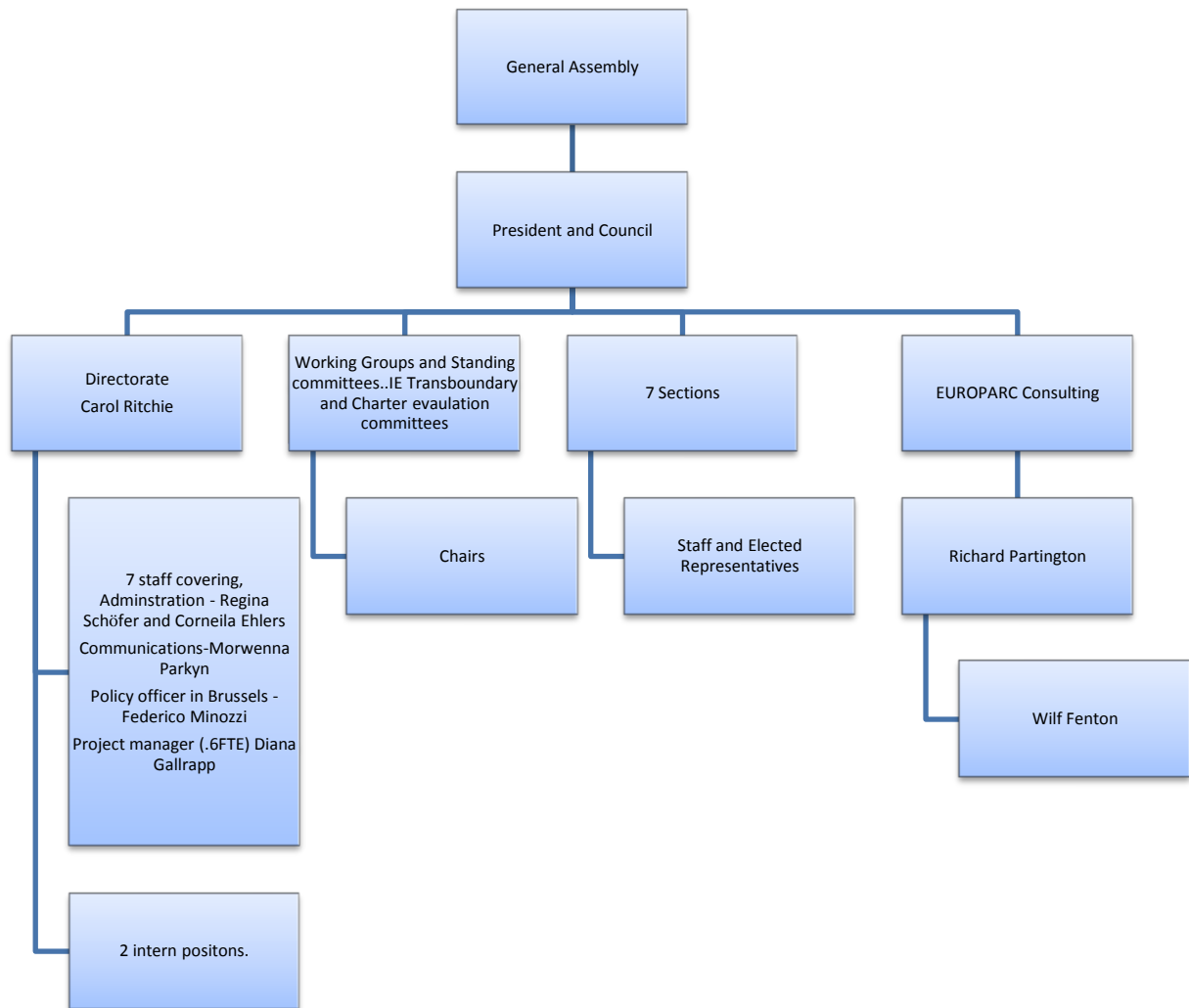
Wilderness (with Wild Europe, WWF and others) : Chair Erika Stanciu. Council rep : Erika Stanciu

Health and Protected Areas Chair : Chair Matti Tapaninen (Fi), Council Rep: Rolands Auzins

Transboundary (although currently still operating within the STEC) : Martin Solar: Council Rep Paulo Castro

Sustainable Tourism Working Group: Chair Paulo Castro: Council Rep: Paulo Castro

- EUROPARC Consulting, is a company wholly owned by the EUROPARC Federation. They specialise in the policy and practice of protected-area management and are uniquely placed to provide advice, training and expertise, as they use exclusively experts with first hand knowledge of protected area management. EUROPARC members are offered preferential rates for work undertaken. Profits generated by EUROPARC consulting are invested back into the Federation. EUROPARC Consulting is managed by a board of Directors , chaired by Richard Partington, and of which the Federation President and Director are amongst . A managing director Wilf Fenten manages the business.
- Organigramme of EUROPARC Federation



- The EUROPARC Federation has an agreed strategy and the directorate creates annually a workplan to indicate how that strategy will be implemented. Various additional strategies also guide its work such as the communications and policy and advocacy strategy. The work of the sections and working groups are also fed into this planning system and reported in the annual report. The Directorate produce all communication material for its members which includes the annual report, monthly e-news, quarterly charter newsletter, website and facebook updates , exhibition , and various project specific outputs and communication material.

The work of the EUROPARC Federation should mirror the work of the protected areas its represents. Therefore its portfolio of programmes , initiatives and projects reflects developments in conservation management, sustainable development , community participation, communications and education. The Federation will engage in projects to develop work that will be of benefit to all members to development new and best practise in the management of protected areas. The current portfolio of work includes the Charter for Sustainable Tourism, Following Nature’s Design – Transboundary , Junior Rangers, Alfred

Toepfer Scholarship, Lobbying, Management guidelines for Volunteer Managers, Wilderness amongst other areas of work. Current updates on project work is found in the annual report.

- One of the big areas of work of the federation is the Charter for Sustainable Tourism in protected areas. The European Charter emanated from a report by the EUROPARC Federation in 1993 called Loving Them to Death. It is a practical management tool which helps protected areas to continuously improve the sustainable development and the management of tourism taking account of the needs of the environment, the local population and the local tourism businesses. The charter methodology was devised through a LIFE project in 1994 led by the French Federation of Natural and regional park. The Federation has certified **78 protected areas in 8 European countries** as Charter Parks. An award is given for 5 years and the need to be re-evaluated. A charter park can then award a certificate to tourism businesses working sustainably within the park, (known as Charter 2) currently there are a further **246 local tourism businesses in 15 Charter Areas** - working towards an environmental management within their businesses and developing activities promoting and respecting the protected areas in which they are based. There are a number of specific methodologies in different countries agreed to give the charter 2 award. EUROPARC is working in the STEPPA project to create a universal set of Charter 2 criteria, whilst yet ensuring local variation can take place. This is needed to ensure quality standard of the award. Charter 3 was planned in the original concept, which would be a methodology to award a charter certificate to tour operators who bring visitors to protected areas, but both STEPPA and sustainable tourism destination projects are allowing the Federation to review the current Charter, necessary after some 17 years and plans for Charter 3 methodology developments are not encouraged at this time.