



Le Sentier, 17 October 2016

Biosphere Reserves in Germany and their management - 2 examples

Geschäftsstelle Biosphärengebiet Schwarzwald | Regierungspräsidium Freiburg

Biosphere reserves in Germany



- 17 Biosphere reserves in Germany
- take up 1.9 million hectares
- that is 3,4% of the terrestrial surface of Germany
- some of the biosphere reserves overlap with national parks or nature parks
- 15 of the biosphere reserves in Germany are recognized by UNESCO



Biosphere reserves in Germany



Biosphere Reserve Black Forest



Biosphärenreservat
Bliesgau



Biosphere Reserve Bliesgau

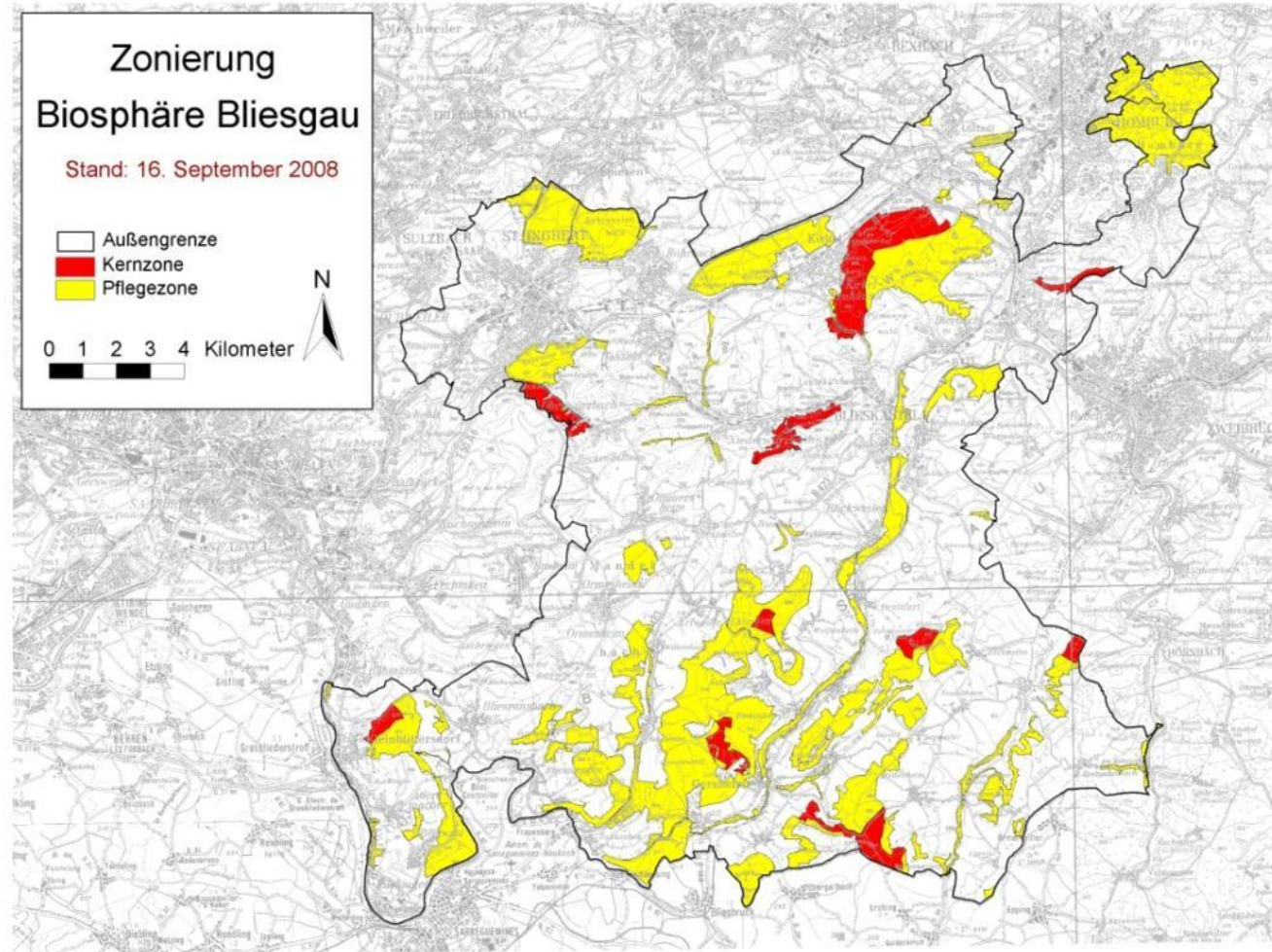
Biosphärenreservat
Bliesgau



Key figures

Decree in 2007

- 36,152 hectares
- Population: 111,000
- Inhabitants per squarekilometre: 311
- communal administration union



Beech forest in the core zone Kirkel



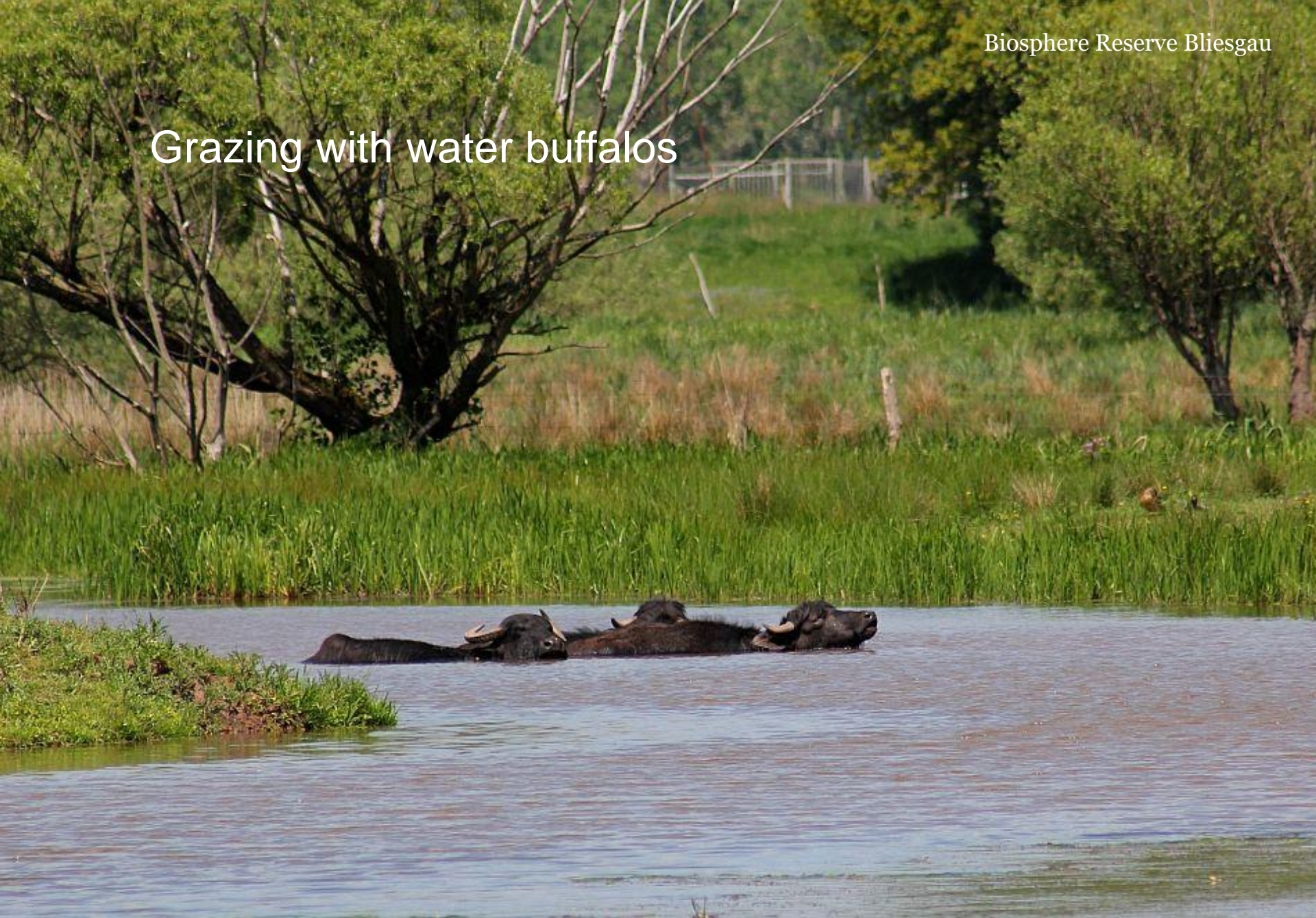
Cliff formation of the colored sand stone



Pasture landscape of the Blies



Grazing with water buffaloes



Storks on their nest



Industrial sites in St. Ingbert



Cultivated landscape in the south of the Bliesgau





Orchis militaris –
Military Orchid

Ophrys holoserica –
Late spider-orchid



Mantis religiosa
European mantis



Organization management BR Bliesgau

- communal administration union
- composed of the environment minister of Saarland, the county commissioner and the mayors
- the administration is done by the office of the communal administration union
- advantage: intensive integration of citizens through communal parliaments
- disadvantage: difficult financial situation

Association representatives



Project: „Fahrtziel Natur“

- A cooperation between „Deutsche Bahn“ and big German environmental associations
- Passenger transportation in the biosphere reserve Bliesgau has been extended




Der Bliesgau:
Sie werden Augen machen!

Fragen auch Sie sich, wo oder was der Bliesgau ist? Unser Tipp: Suchen Sie die Antwort vor Ort – denn dieses Kleinod im Saarland ist eine Reise wert. Der Bliesgau punktet mit artenreichen Orchideenwiesen, einer eindrucksvollen Auenlandschaft und einer regionalen Küche „à la bonheur“. Mit der FreizeitCARD Rheinland-Pfalz und Saarland lassen sich die regionalen Besonderheiten umweltfreundlich und bequem mit dem Nahverkehr erkunden.

Nähere Infos, Naturtipps und vieles mehr unter www.fahrtziel-natur.de/bliesgau

Erholen. Erleben. Erhalten.

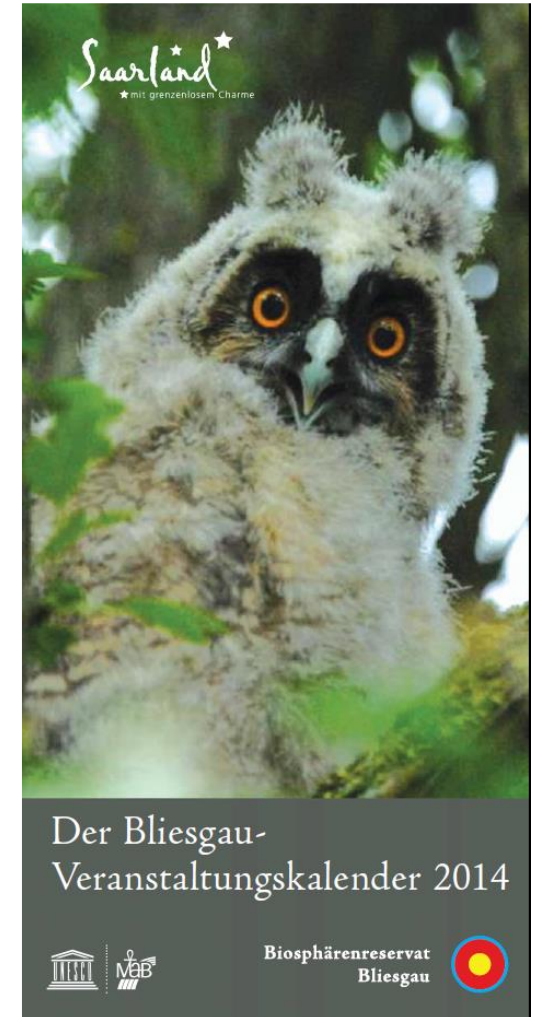
48 certified nature- and landscape guides

- Guide touristic guests
- Many of these guides are on the way to a full time job
- 5 of them are professionals by now
- They offer numerous trips through the biosphere reserve



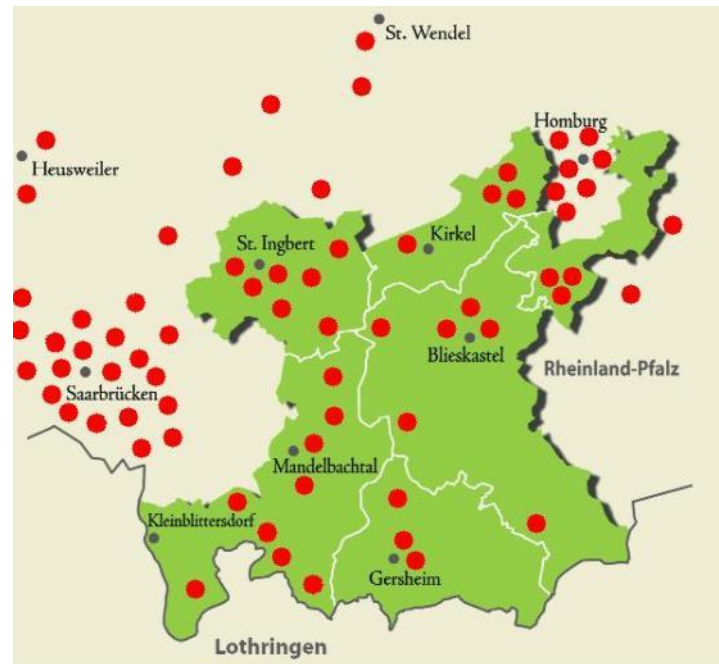
Bliesgau-Veranstaltungskalender

- Calendar of events
- More than 250 events in one year
- Many of them generate great appreciation by now



Bliesgau-products in current trend

- 100 Bliesgau-products, 18 manufacturers, more than 65 sales outlets
- Many small producers became economic



Bliesgau-dairy

- Milk from agricultural organic farms
- They offer drinkable milk, curd, yoghurt and other milk products
- The demand is higher than the supply of milk
- The dairy works very economically at the present





Biosphere Reserve Black Forest







Preservation of Ecosystems

current situation

- Variety of landscapes, habitats and species:
 - ice-age characterized biotic communities
 - marshlands
 - near-natural forests
 - pasturage and hay meadows
 - screes and rocks
- numerous endangered, rare and endemic species
- reduction of traditional livestock breeds



Preservation of the common pasture land

current situation

- high biodiversity
- typical landscapes, unique
 - > tourism
- sharp fall in the last few years
- ca. 10.000 ha in the south black forest

goal

- to make pasturing more profitable by means of incentives and marketing strategies



Tourisms

current situation

- attractive landscape
- important economic sector
- ca. 3 million overnight stays per year

goal

- supporting sustainable, environment-friendly tourism



Regional development

goals

- to support regional marketing
- brand for products produced in the biosphere reserve
 - milk und milk products
 - beef
 - wood and wood products
 - handcraft
- to build interrelationships to close city regions (Freiburg, Basel)
- partner project of EUROPARC-Germany

Management situation in Germany

- 3 BR are managed by the local administration (e.g. BR Bliesgau)
- all others are managed by their respective environment department (e.g. BR Black Forest)
- personnel situation very different, also the duties
- according to the scope of tasks the staff consists of 2 to 30 members
- counties, communes and citizens are always comprehensively involved

Survey about regional economic effects in biosphere reserves

- done by the Institute for Economics University of Würzburg
- done in almost all BRs
- most important results:
 - all regions profit from the economic effects
 - many new employment emerged, especially in tourism, agriculture, forestry and craft
 - UNESCO – designation brings image boost
 - Awareness of environmental subjects improves

**Thanks for your
attention!**

♥lich
Will-
kommen

