

Hungarian way of the Natura 2000 implementation (8930/16/ENVI)

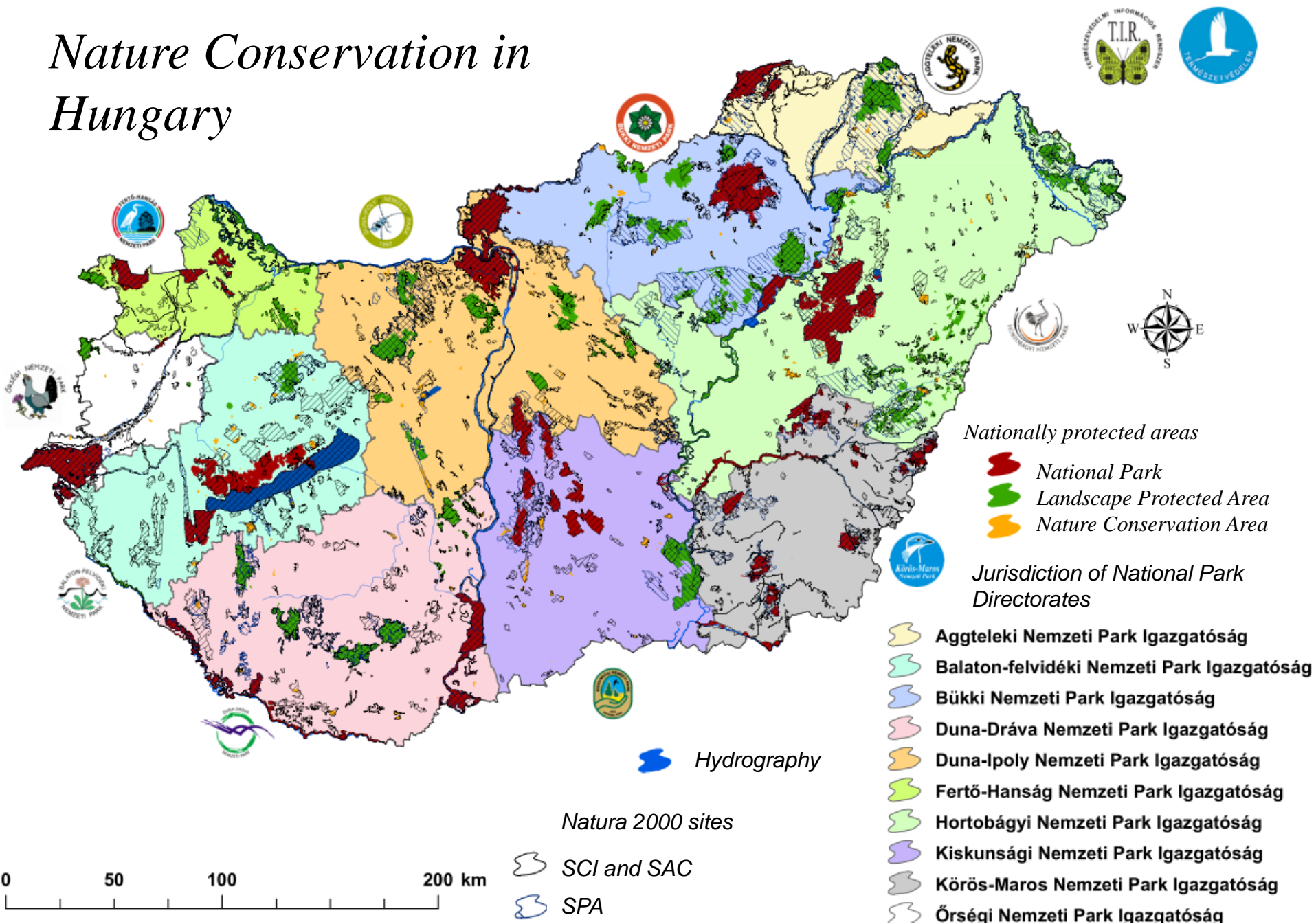
Management of Natura 2000 sites
in CEE workshop
Fertőújlak, 3 May 2017

András Schmidt

Deputy Head of Department for Nature
Conservation
Ministry of Agriculture

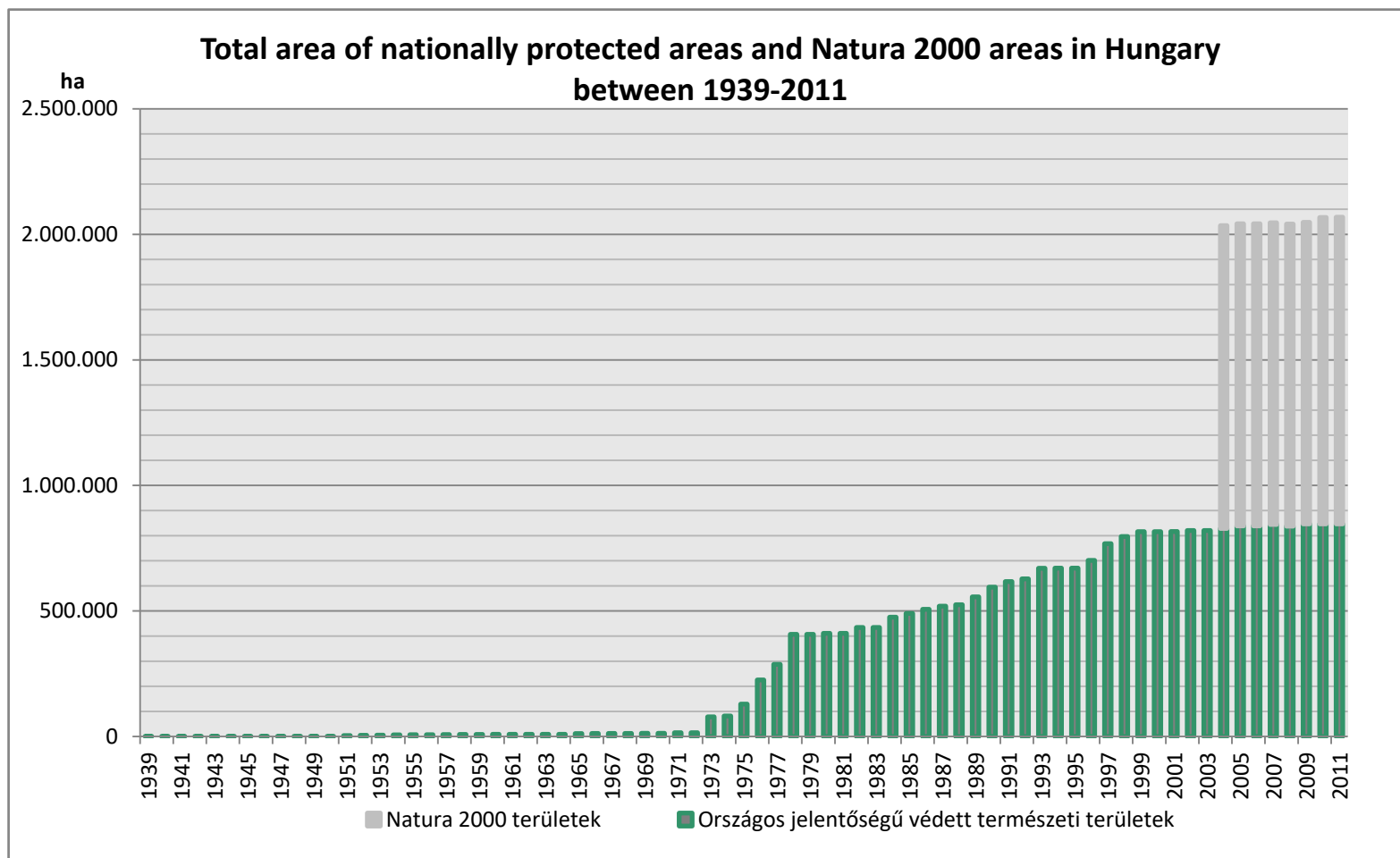


Nature Conservation in Hungary





Natura 2000 – landslide victory... ...but we are still buried under it...





Natura 2000 in legislation

Main transposition of EU legislation on Natura 2000 in one Government Decree (275/2004) (both SPAs and SCIs, SACs)

Land parcel numbers and maps of all sites in a ministerial decree (Decree 14/2010 of the Minister of Environment and Water)

HD Article 6(1) (necessary conservation measures) is applied to all sites from the establishment of the network

Natura 2000 is constantly integrated into more and more pieces of legislation of all kinds of sectors (e.g. water management, spatial planning etc.)



Some other aspects

300 000 ha are owned by the state and managed by the national park directorates (out of nearly 2 million ha)

Compensation payments – good sides and bad sides

Natura 2000 does not equal nationally protected area: legally weaker, but in fact often stronger due to EC supervision

NGOs and scientists as „watchdogs”



Natura 2000 network in Hungary facts and figures

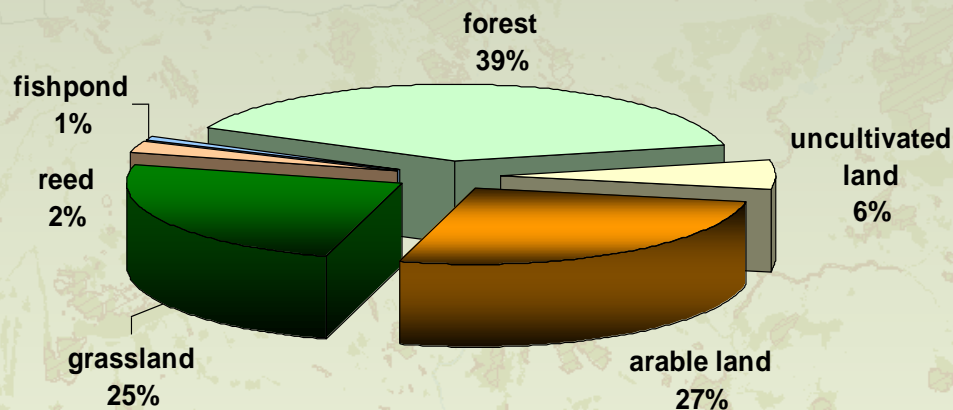


~500 000 ha



~16 000 ha

Areas categorized by land use in Natura 2000 sites



~500 000 ha



~50 000 ha

 Protected areas
 Natura 2000 sites



SACs in Hungary

Obligations under the Habitats Directive

- HD 4 (4) SCIs to be designated as SACs within 6 years (In HU, expired in 2013, 2014 and 2016)
- „establishing priorities in the light of the importance of the sites... (FCS and coherence)... and in the light of the threats...”
- HD 6(1) proactive measures
- „establish the conservation measures,... if need be, appropriate management plans,... and appropriate statutory, administrative or contractual measures...”



Legal basis of SACs in HU



- Designation, rules pertaining to SACs, trigger habitats and species, objectives of SACs, maps:

- Government Decree No. 275/2004. (X.8.) (amended in 2010) (GOVDEC) on Natura 2000 sites

- designation
- list of SACs
- rules

- Decree of the Minister of Environment and Water No. 14/2010. (MINDEC) on land parcel numbers of Natura 2000 sites

- designation
- overall objective of SACs
- maps and cadastral numbers, precise boundaries with legal force
- **legal reference to SDF and the information contained therein**



Legal basis of SACs in HU – SDFs



- SDF contains in HU (updated annually): trigger habitats and species, priorities (SDF 4.2 Quality and importance) and objectives (SDF 6.3 Conservation measures) of all SACs and SPAs
- SDF is publicly available and has legal force under MINDEC (Article 7 (1-2))
- The overall conservation objective (laid down in Article 4 of GOVDEC, in Article 7 (1) of MINDEC and in the SDF of each HU site) applies to all trigger habitats and species
- For most trigger habitats and species and on most sites, more detailed objectives are also contained in the SDF (also in light of local, regional or national importance of the site for the given habitat or species, threats, and coherence of the network)



Achieve or maintain FCS



- GOVDEC: restrictions on land use in Natura 2000 sites – GOVDEC and other legal provisions (e.g. in other sectoral law) pertaining to N2K
- planning documents
- compensation schemes
- habitat restoration and other investment projects
- permitting procedures
- each Natura 2000 site has a nature conservation manager (NPD) identified in Government Decree No. 71/2015



Management planning

- Site specific management plans exist for 273 SACs (out of 479) and 12 SPAs (out of 56) <http://www.termeszetvedelem.hu/elfogadott-fenntartasi-tervek>
 - assisted by guidance issued by the Ministry of Agriculture
 - mostly funded by EARDF, LIFE and Swiss Contribution
 - **no binding force**, but helps managers and authorities
- Management plans of protected areas fully overlapping with Natura 2000 sites (12SACs+1SPA) **binding force**
- Preparatory documents for management plans of protected areas fully overlapping with N2K sites (23 SACs and 6SPAs) **no binding force yet**
- Forest management plans incorporating Natura 2000 aspects in sites covered $\geq 50\%$ by forests (74) **binding force**
- 49 more site-specific plans in 2017, and remaining 106 by 2020



Permitting procedures

- Presently at county authority level (19 counties)
- Authorities are subordinated to the Prime Minister's Office, professional supervision by other ministries (such as Ministry of Agriculture)
- Regular thematic meetings organised for environmental departments of authorities and national park directorates together





Permitting procedures



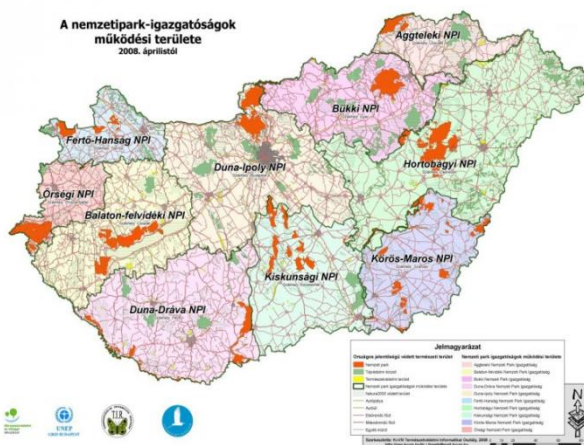
- For most permitting procedures, the authority is the environmental department of the county authority
- Also forestry department, hunting department etc. of the county authority (in these cases involves the environmental department)
- Appropriate assessment is incorporated into EIA and/or SEA where applicable



Permitting procedures



- The environmental department involves the national park directorate in many issues (professional opinion)



- National park directorates operate the ranger service (presence in the field)





Financing



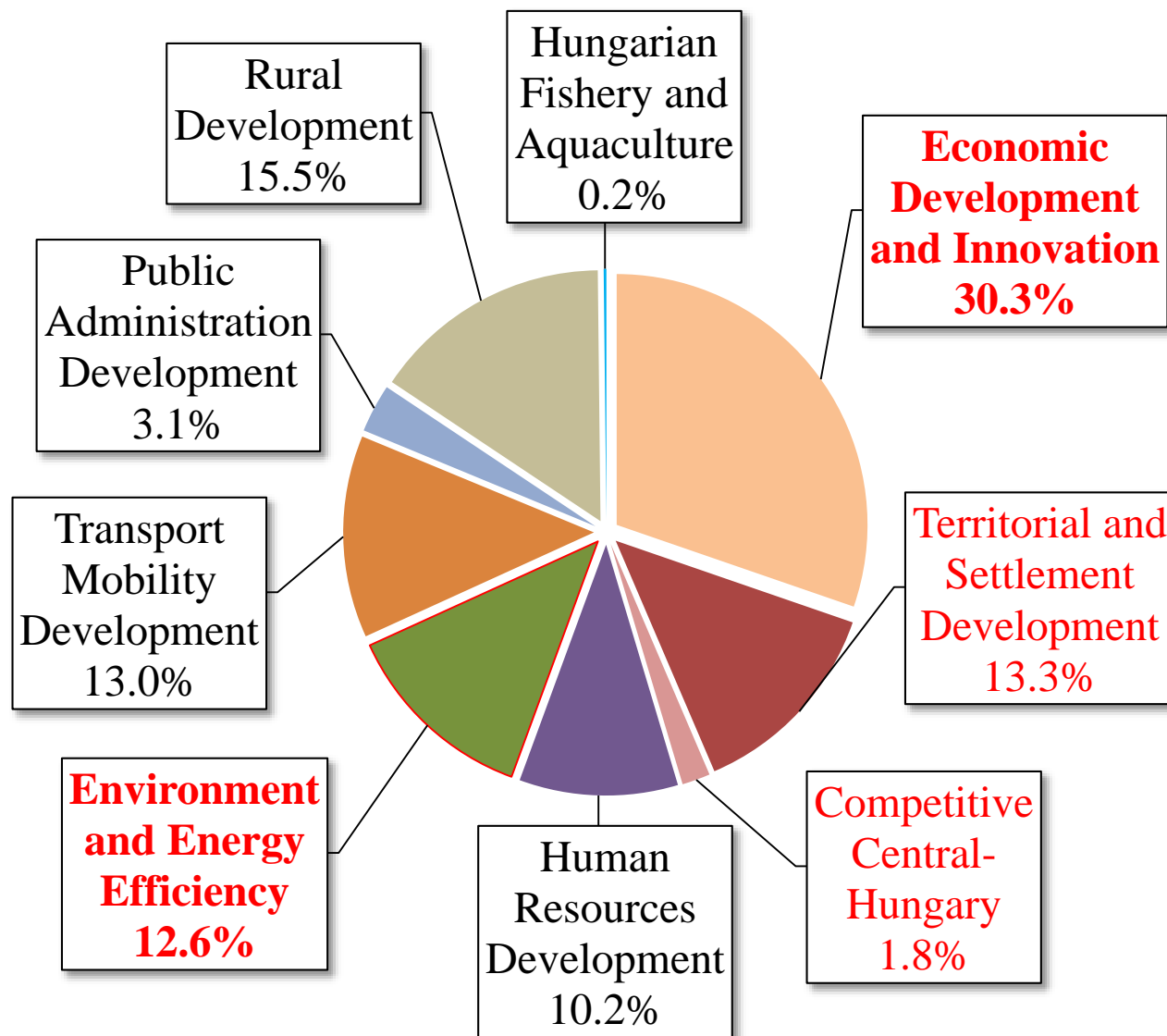
- Land use regulations on Natura 2000 sites
 - Government Decree No. 269/2007 on regulations for Natura 2000 grasslands (with compensation payments)
 - Government Decree No. 41/2012 on compensation payments from EARDF for Natura 2000 forest management
- Voluntary agri-environmental schemes
- Fisheries Operational Programme
- Investment programmes: Environment and Energy OP, LIFE etc.



OPs for 2014-2020



Total funding:
€ 25 billion EU
financing
+
15% national
contribution
+
Private funding
(where applicable)





Our planning framework for nature (PAF vs. OPs)



Prioritised Action Framework for Natura 2000

9 CONSERVATION PRIORITIES

- (1) Wetlands and floodplains
- (2) Aquatic habitats
- (3) Lowland grasslands and forests
- (4) Montane forests
- (5) Marginal habitats (foothills)
- (6) Areas under intensive use
- (7) Research, monitoring, ex-situ conservation
- (8) Interpretation, awareness raising, capacity building
- (9) Sustainable use of socio-economic benefits

41 MEASURES

1. *Management*
(13)

2. *Restoration of habitats* (10)

3. *Research, monitoring* (7)

4. *Planning, interpretation, capacity building* (7)

5. *Sustainable use* (3)

OPs

Rural Development

Fisheries

Environment and Energy Efficiency

Economy and Innovation

Territorial Development

CBC

LIFE (?)



Concrete objectives to 2020



- **Measures to improve conservation status implemented on at least 5% of the national Natura 2000 network**
- **Infrastructure for nature conservation management in place on at least 50% of sites managed by national park directorates**
- **Compulsory management prescriptions in place on all Natura 2000 grasslands and fisheries and compensated for where applicable**
- **Support for voluntary Natura 2000 measures available on all cultivated Natura 2000 land**
- **Natura 2000 management plans or equivalent management documents available for all Natura 2000 sites**
- **The share of „unknown” species reduced by 50%**
- **Well documented monitoring methodology is available for all species and habitats of community importance**





Environment and Energy Efficiency OP (PA4)



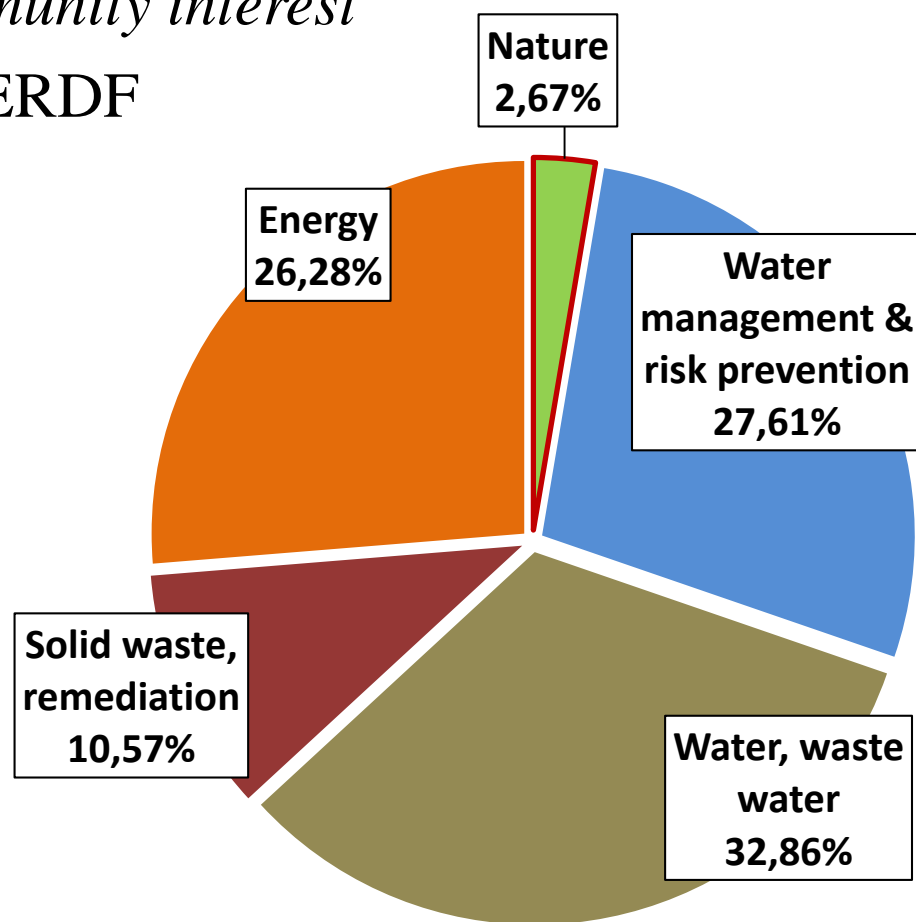
Priority Axis 4 – Investments in nature and biodiversity:

Improving the conservation status and condition of natural values and areas protected and/or of community interest

Funding (PA4): € 100,99 million ERDF

Targets to 2023:

- **10%** of species and habitat types of Community interest demonstrate an **improving conservation status**
- Measures to improve conservation status (restoration and management infrastructure) implemented on at least **100 000 hectares**
(milestone to 2018: 15 000 ha)



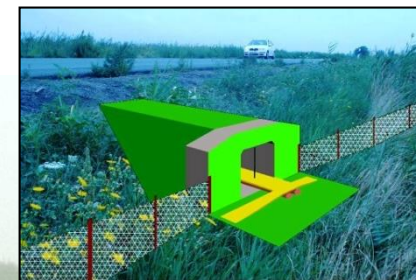


Environment and Energy Efficiency OP (PA4)



Measures

- Habitat restoration & species conservation measures (~60%)
- Management infrastructure (management machinery and equipment, monitoring and site surveillance infrastructure) (~30%)
- Interpretation infrastructure for Natura 2000 – pilot projects (~10%)
- Strategic surveys (e.g. mapping of ecosystems, evaluation of ecosystem services) (~1,5%)



Beneficiaries:

- National Park Directorates + partners

Target Area:

- Natura 2000 sites, protected areas and beyond





Economic Development and Innovation OP (PA6)



Priority Axis 6 – Tourism:

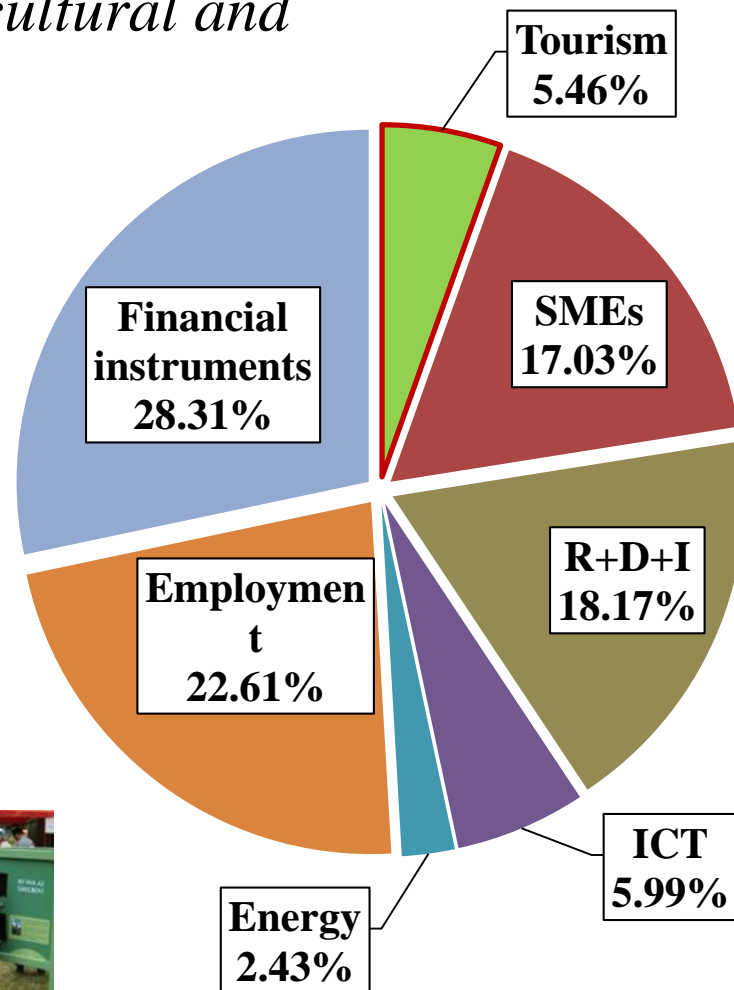
Increasing tourism-related spending on cultural and natural heritage sites

Funding (PA6): € 507,6 million ERDF

Targets to 2023:

- **Spending** of international and national tourists **increases by 10%**
- The **expected number of visitors** on cultural and natural heritage sites **increases to 2 352 000**

Milestone to 2018: 689 000





Economic Development and Innovation OP (PA6)



Measures

- Networks of cultural and natural heritage sites of national or international importance (e.g. thematic routes)
- Attractions of international significance (e.g. world heritage sites, castles, religious sites)
- **Interpretation of natural values as tourism attractions (national parks, Geoparks, world heritage sites)** – app. 13% of PA6 allocation (~ € 60 million)
- Health tourism sites



Beneficiaries:

- National Park Directorates (nature interpretation only)



Criteria for investments:

- Need for central coordination, national/international importance, network-approach



**Thank you for your
attention!**

