



EUROPARC

F E D E R A T I O N

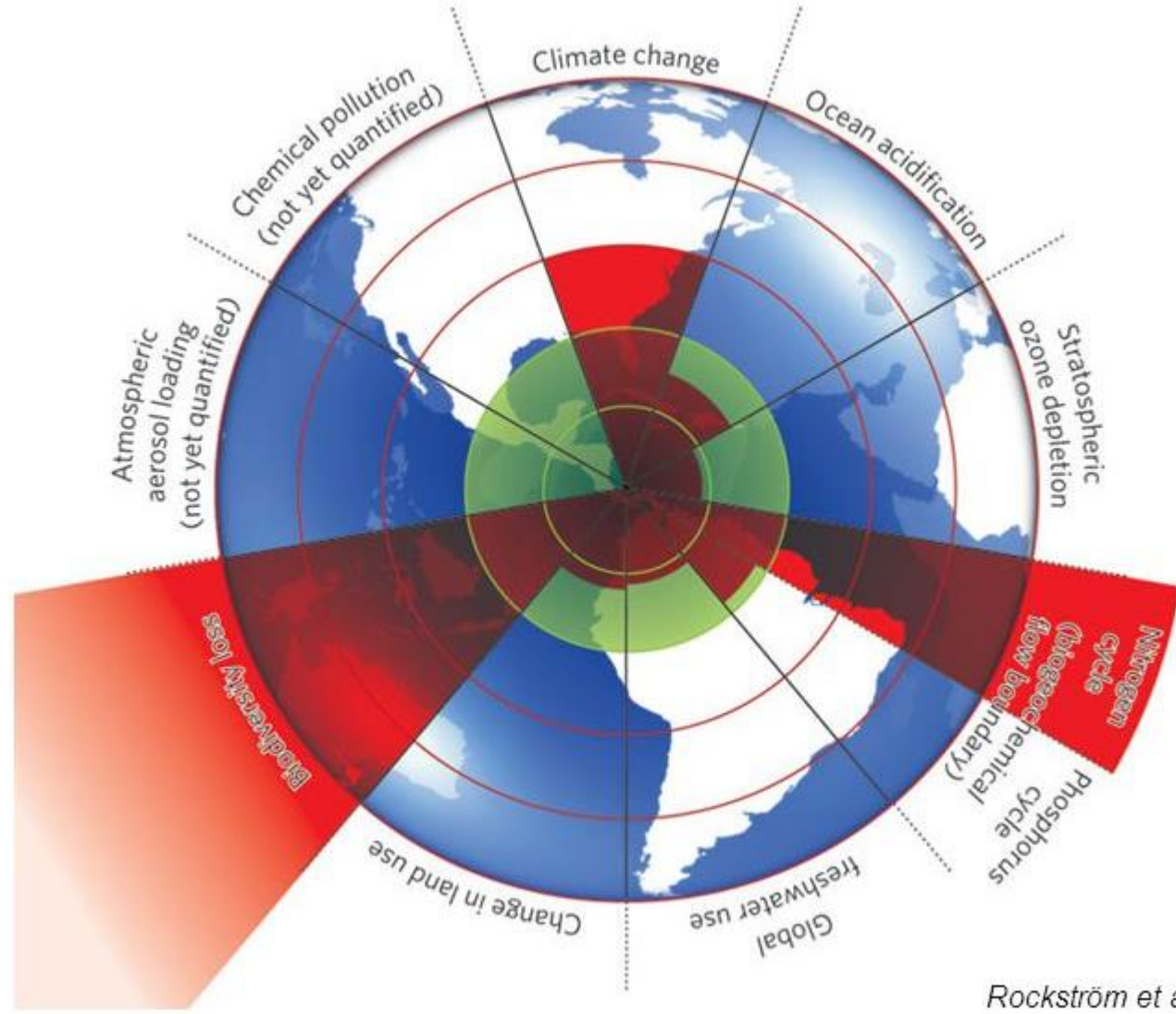


**REGIONS
& CITIES**

**European Week
Brussels 9-12 October 2017**

Ignace Schops
President





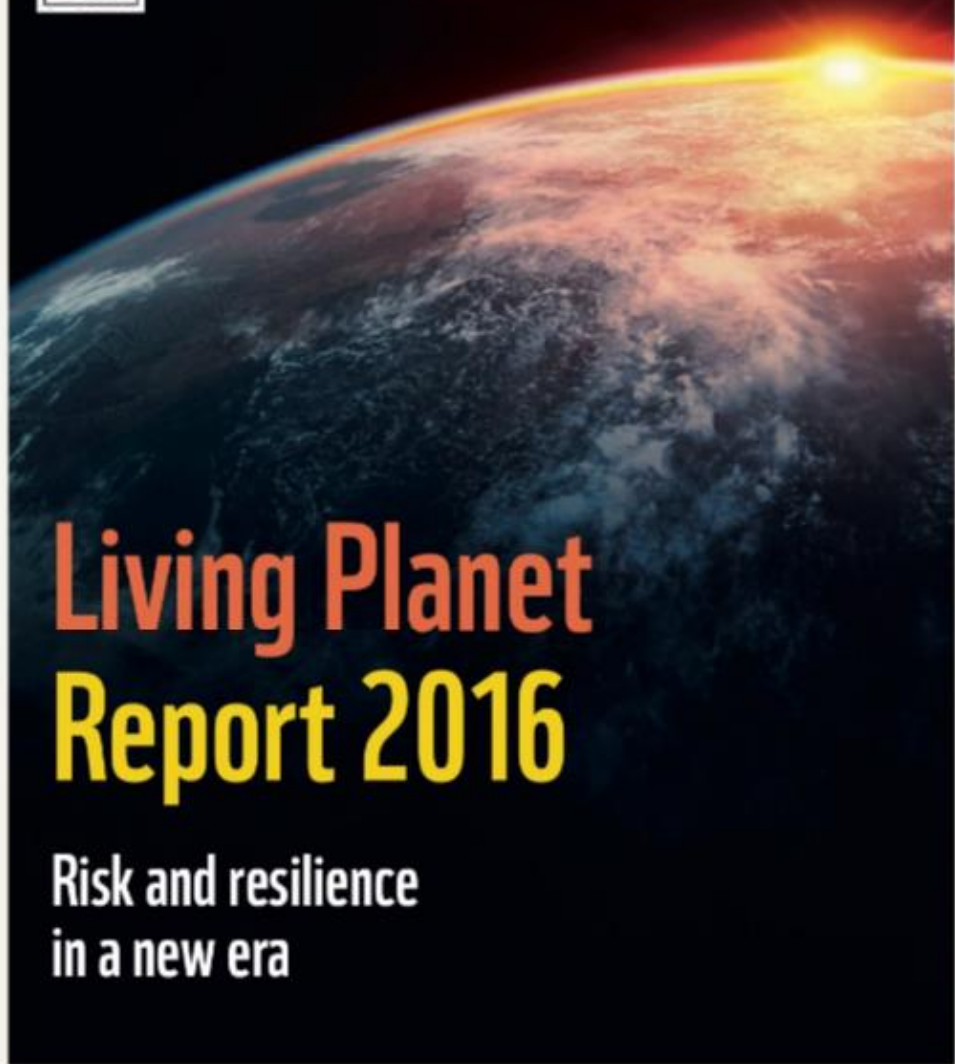
Rockström et al. (2009)



REPORT
INT
2016

THIS REPORT
HAS BEEN
PRODUCED IN
COLLABORATION
WITH:

ZSL
LET'S WORK
FOR WILDLIFE



Living Planet Report 2016

Risk and resilience
in a new era



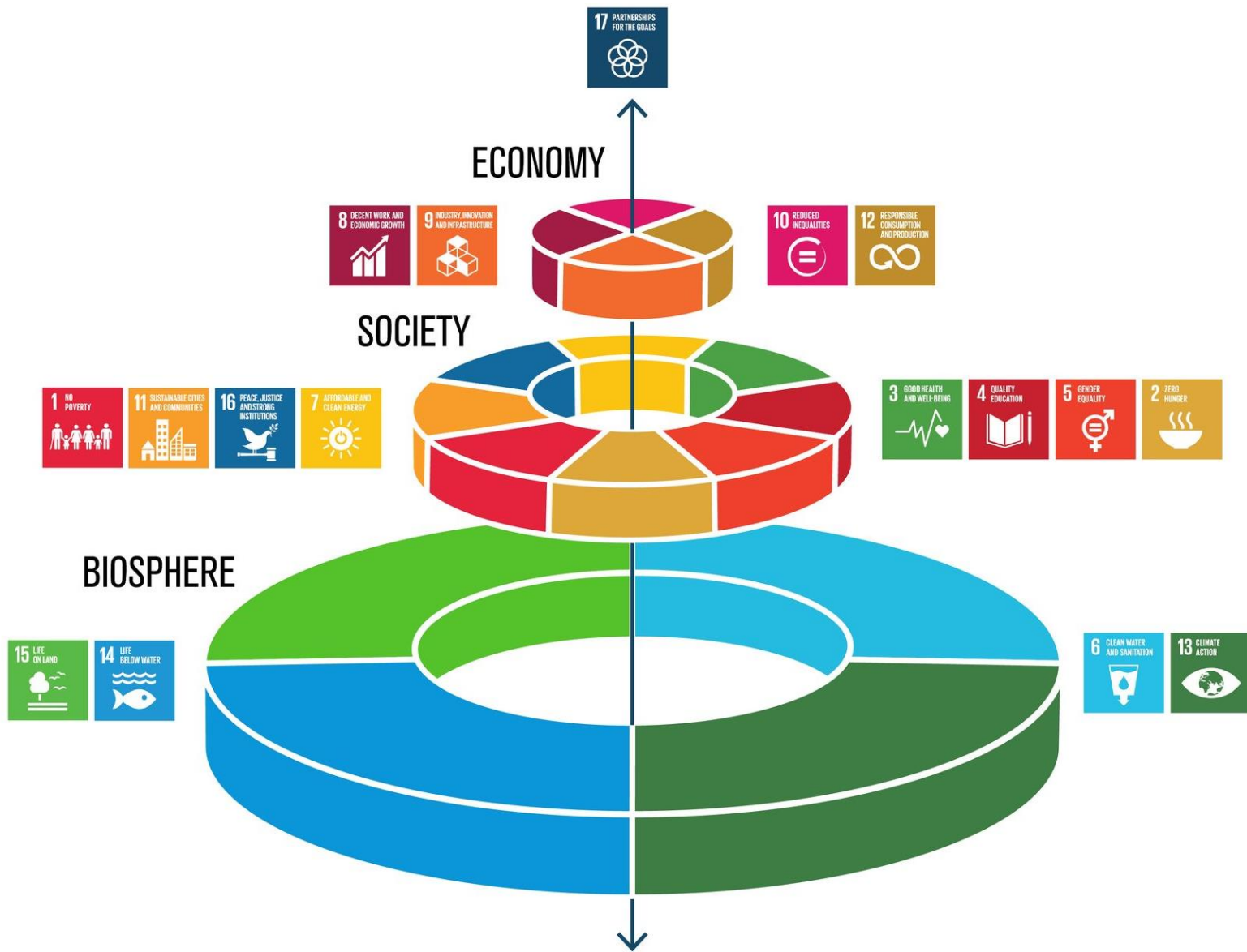
Download the report:
panda.org/LPR

GLOBAL WILDLIFE POPULATIONS
COULD DECLINE BY
TWO-THIRDS
BY 2020.





6 million parts
3 million screws







ENVIRONMENT

European Commission > Environment > Nature & Biodiversity

Home About us Policies Funding Legal compliance News & outreach



NATURE & BIODIVERSITY

EU Biodiversity Policy

- What is biodiversity?
- [EU 2020 Biodiversity Strategy](#)
- Biodiversity policy development
- Economics of Biodiversity
- Biodiversity Proofing
- No Net Loss
- Financing biodiversity
- Access and Benefit Sharing
- Business and Biodiversity
- BEST Initiative

EU Nature Legislation

Natura 2000 Network

EU Biodiversity Strategy to 2020 – towards implementation



The European Parliament adopts resolution on the EU 2020 Biodiversity Strategy

The resolution, which was adopted on Friday 20 April 2012, is a follow-up to 'Our life insurance, our natural capital: an EU biodiversity strategy to 2020' as tabled by the European Commission in May 2011.

"The services that nature provides us with, like clean water, clean air, fertile soil, food, are not only crucial for the well-being of human kind, they also represent an astronomical economic value. According to economists, **each year we lose 3% of GDP due to the loss of biodiversity.** That costs the EU €450 billion year after year. Compared to these figures, investing €5.8 billion per year in Natura 2000 is a bargain!" said rapporteur Gerben-Jan Gerbrandy (ALDE, NL).

The European Parliament emphasises that the loss of biodiversity "has devastating economic costs for society which until now have not been integrated sufficiently into economic and other policies".

"The real key to this issue is not this new strategy, but, rather, the forthcoming reforms of the common agricultural and fisheries policies and the multiannual financial framework (MFF)", the resolution says.

- [European Parliament Resolution of 20 April 2012](#)

EU Biodiversity Strategy to 2020 – towards implementation



- Nature and biodiversity
- Biodiversity Strategy
- Nature and biodiversity law
- Species protection
- Natura 2000
- Green infrastructure
- Knowledge and data

Nature and biodiversity

Biodiversity Strategy ▶

We aim to halt biodiversity loss in the EU and help stop global biodiversity loss by 2020. Here is how we intend to protect the natural capital essential to our health and our economy.

Nature and biodiversity law ▶

The Birds and Habitats Directives are the pillars of our nature legislation. New laws now tackle specific issues such as invasive alien species.

Species protection ▶

We aim to protect all animal and plant species facing particular threats in Europe and work with CITES to fight illegal wildlife trade across the world.

Knowledge and data ▶

Tap into our resources for reporting, databases, maps and publications.

Natura 2000 ▶

The world's largest network of protected areas, it offers a haven to Europe's most valuable and threatened species and habitats.

Green infrastructure ▶

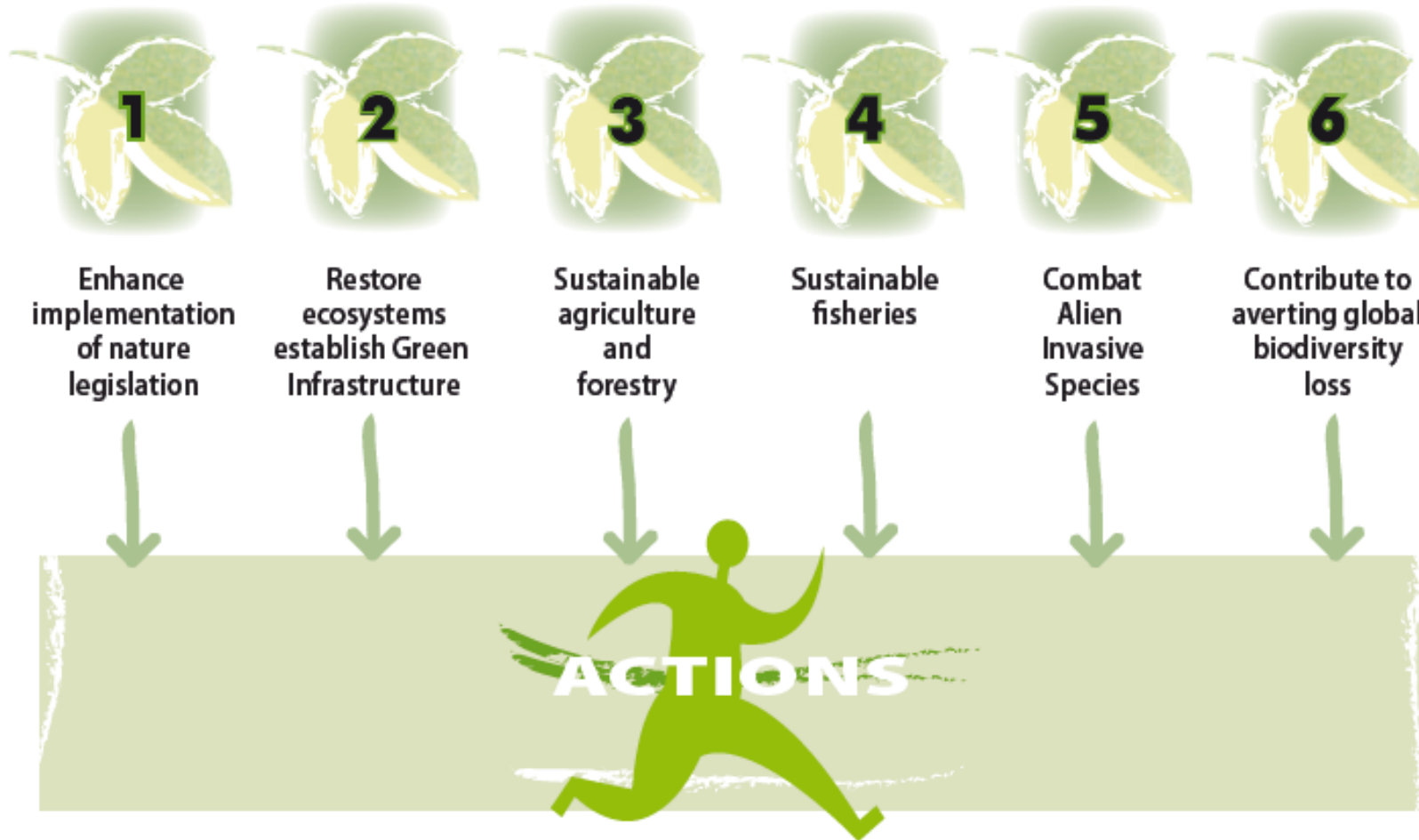
The EU promotes nature-based solutions as a cost-effective alternative to traditional infrastructure. It's good for society, the economy and the environment.

2050 VISION

2020 headline target

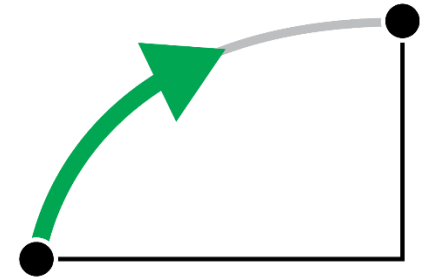
halt biodiversity loss – restore ecosystem services – global contribution

SIX TARGETS





- On track with implementing the actions
- Progress towards the target but at an insufficient rate
- No significant overall progress



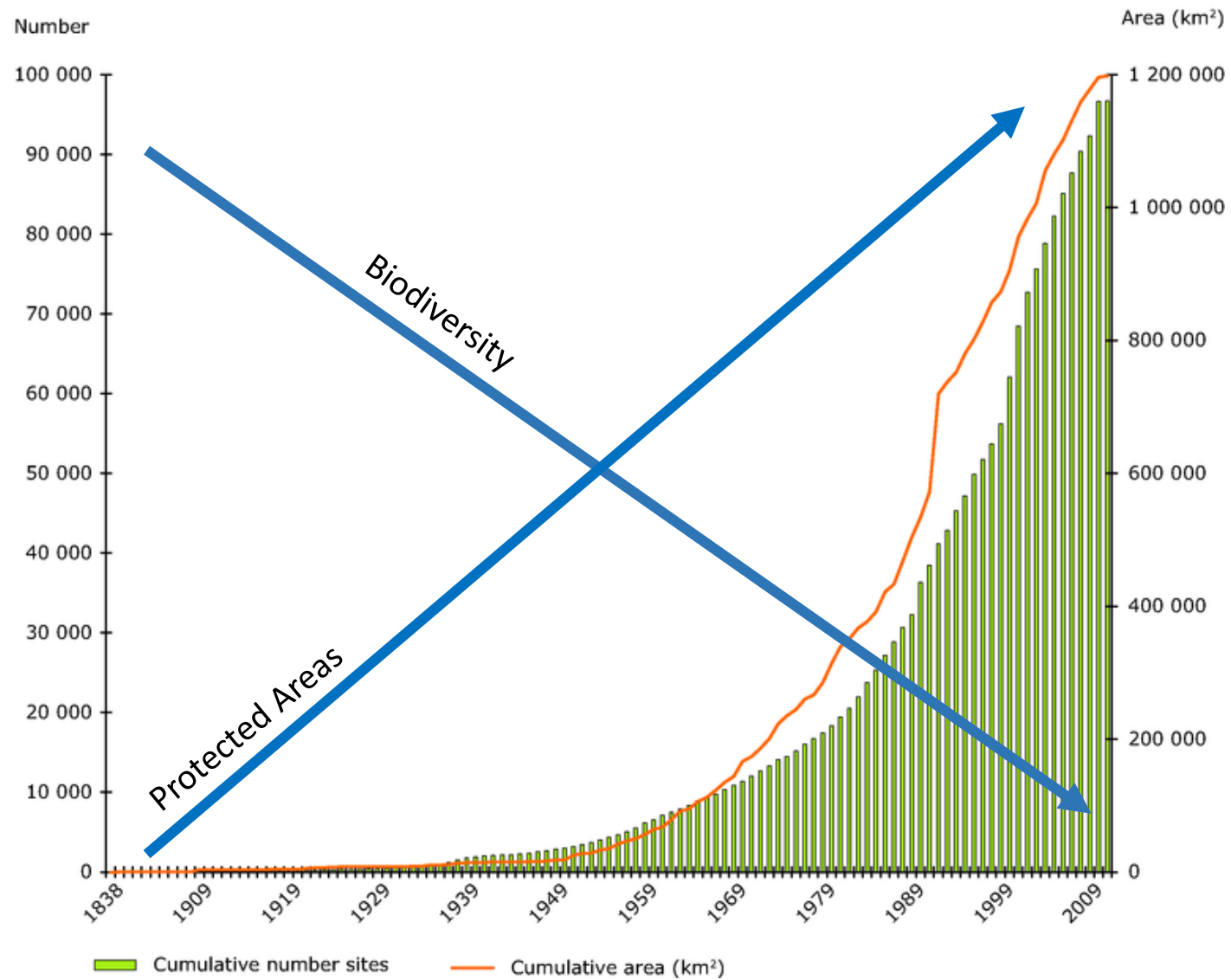


Attitudes of Europeans towards biodiversity

[Euro barometer 436 – 2015]

- 80% Biodiversity loss is serious
- 76% Mankind has a responsibility & stop biodiversity loss
- 67% Nature is essential to tackle Climate Change
- 60% Nature has positive effect on Wellbeing & Health

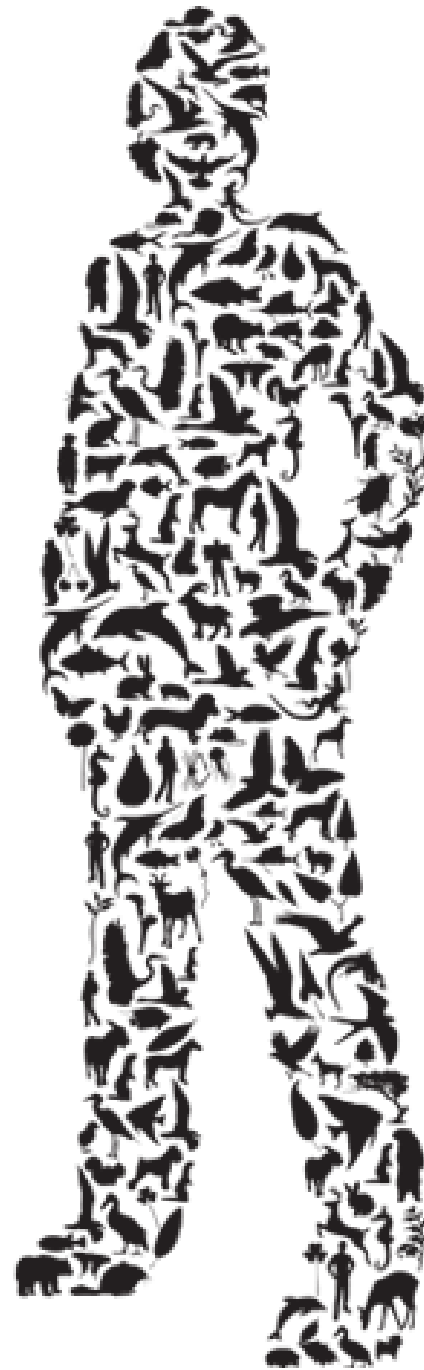
- 93% Need for better information from EU



Biodiversity

WE ARE ALL IN THIS TOGETHER

BIODIVERSITY IS OUR LIFE LINE, ALWAYS
& EVERYWHERE, SMALL OR BIG, NEARBY
OR FAR AWAY, NOW AND IN THE FUTURE





Dear Commissioner Vella.

500,000+ of us asked you to
save & enforce our nature laws.

#NatureAlert





**REGIONS
& CITIES**

**European Week
Brussels 9-12 October 2017**

Building resilient regions and cities

Regions and cities as change agents

Sharing knowledge to deliver results

15 years

REGIONS & CITIES

Regions and cities working for a better future



www.regions-and-cities.europa.eu #EURegionsWeek





**REGIONS
& CITIES**

**European Week
Brussels 9-12 October 2017**





"I ENI
VIDI
VICI"

JUDICIESAR

RYAN JET I

EL PROPER BARRI
A SUCUMBRIR?

THIS ISNT TOURISM
IT'S AN INVASION!

CE N'EST PAS LE TOURISME: C'EST UNE INVASION!

ESD NO ES TURISME: ES UNA INVASION!

QUESTO NON È IL TURISMO
È UN'INVASIONE!

DO YOU KNOW THE
DIFFERENCE?

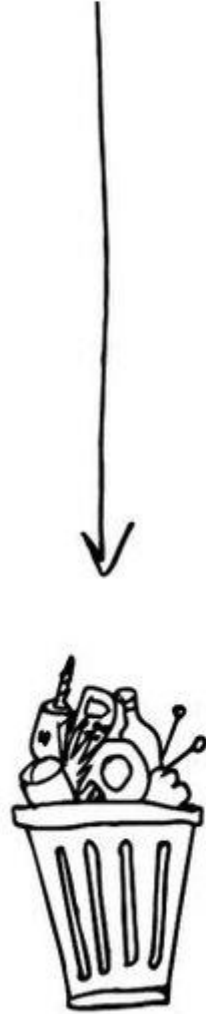
DAS IST KEIN TOURISMUS
ES IST EINE INVASION!

TURISME DE
BARCELONA
CONVERTEX LA
NOSTRA CIUTAT
EN EL SEU VULGAR
NEGOCI
MILLAR

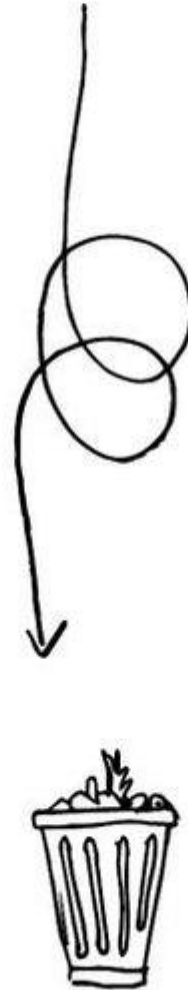




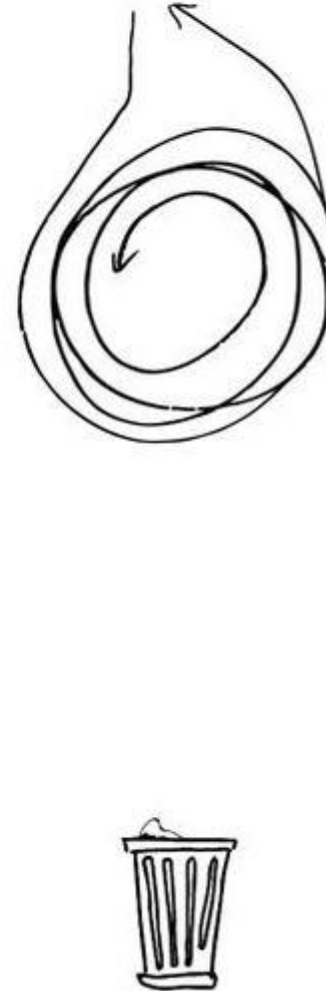
LINEAR ECONOMY



RECYCLING ECONOMY



CIRCULAR ECONOMY





EUROPARC Federation was founded in **1973** with the aim of **supporting protected areas to fulfill their role as preservers of Europe's natural beauty.**

It is a non-profit organization based in Germany (GMBH - limited liability) and the oldest and largest Network of **European protected areas**

EUROPARC is the representative body of Europe's Protected Areas. **Our vision** describes what EUROPARC wishes for European Nature:

***Sustainable nature,
valued by people.***





OUR NETWORK

EUROPARC is the biggest European network
~400 members in 38 countries

Covering 40 million hectares
Representing 40% of Natura 2000



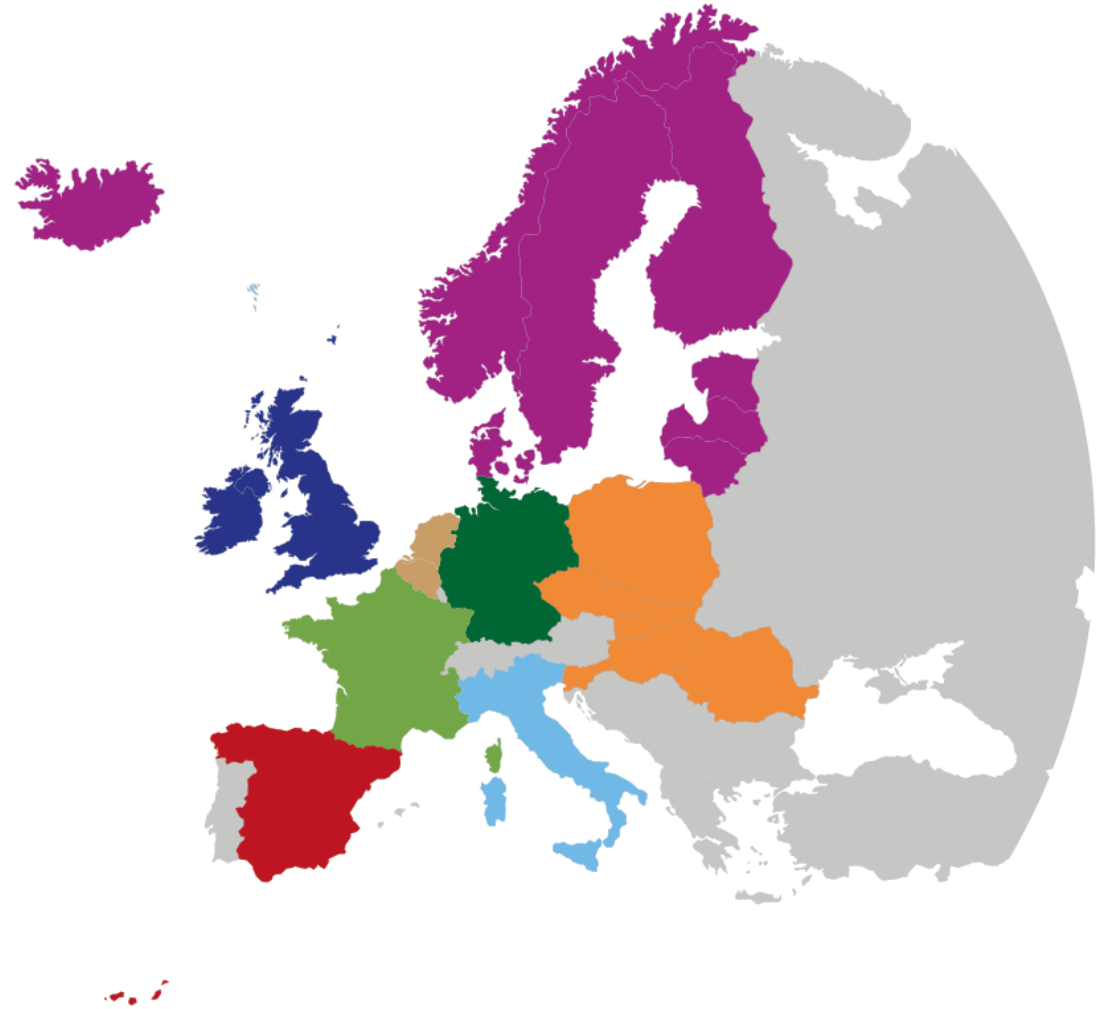
EUROPARC
F E D E R A T I O N



11 OFFICES IN EUROPE

EUROPARC SECTIONS

- Nordic-Baltic
- Atlantic Isles
- Central and Eastern Europe
- Low Countries
- Germany
- France
- Italy
- Spain



REPRESENTING MEMBERS INTERESTS IN BRUSSELS



European Commission



European Parliament

EUROPEAN UNION



Committee of the Regions

ENEMIES OR ALLIES



VISITS PROTECTED AREAS WORLDWIDE

(CAMBRIDGE UNIVERSITY 2015)



Protected Areas

- 12,7% Earth

- (21% Europe)



Visitors

- 8 billion/year

- 3,3 billion - North America

- 3,8 billion - Europe



Spending

- 600 billion \$/year

- Current spending on protection

< 10 billion/year

SUSTAINABLE INVESTMENTS IN NATURE





- * 145 destinations - 17 countries
- * 441 million euro's invested
- * 72.000.000 visitors/year
- * Annual turnover: over 1 billion



*Every year, the new sustainable destinations are awarded at the European Parliament (Brussels), during the **Charter Award Ceremony**.*



1869











Nationaal Park De Meulweg

Nationaal Park Hoge Kempen

Genk

Hasselt

Leubeek

Maas

Geleenbeek

Sittard

Heerlen

Wurm

Rur

Geul

Maastricht

Aachen

Stolberg

Nationalpark Eifel

Drielandenpark

Gulp

Parc Naturel Hautes Fagnes

Vicht

Liege

Verviers

Meuse

Vesdre

Gileppe

Monschau

Ourthe

Ambiève

Rur



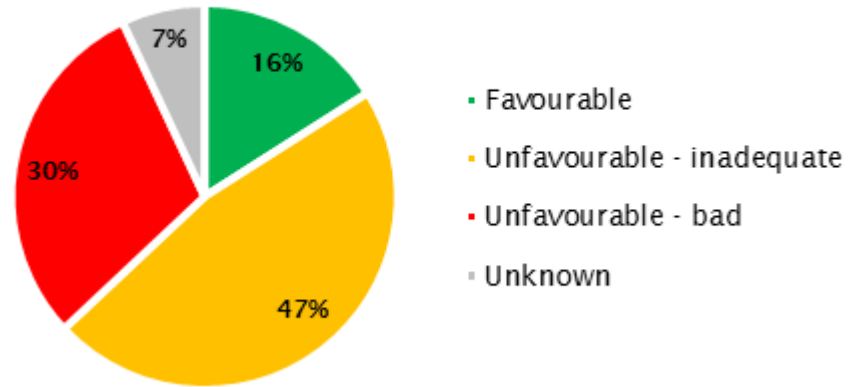


NATURA 2000

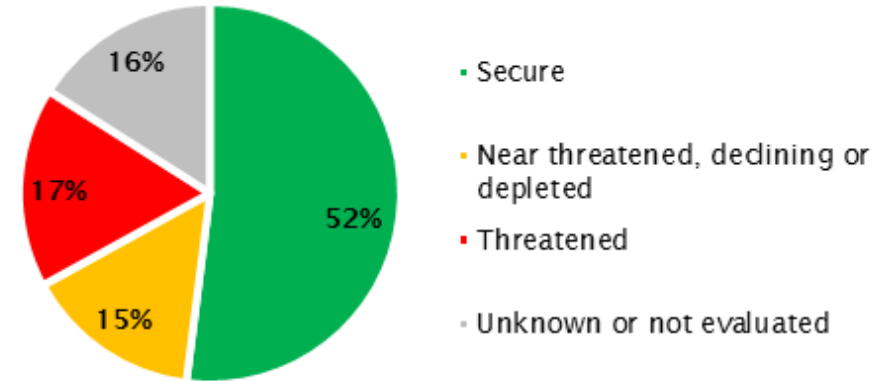


Favorable conservation status

Habitats conservation status 2007-2012



Bird Population Status 2008-2012



THE CHALLENGE



CLIMATE CHANGE



AGRICULTURE



HOUSING/LOCAL ECONOMY



CROSS BORDER PROTECTED AREAS
NATURE & FORESTRY/N2000...



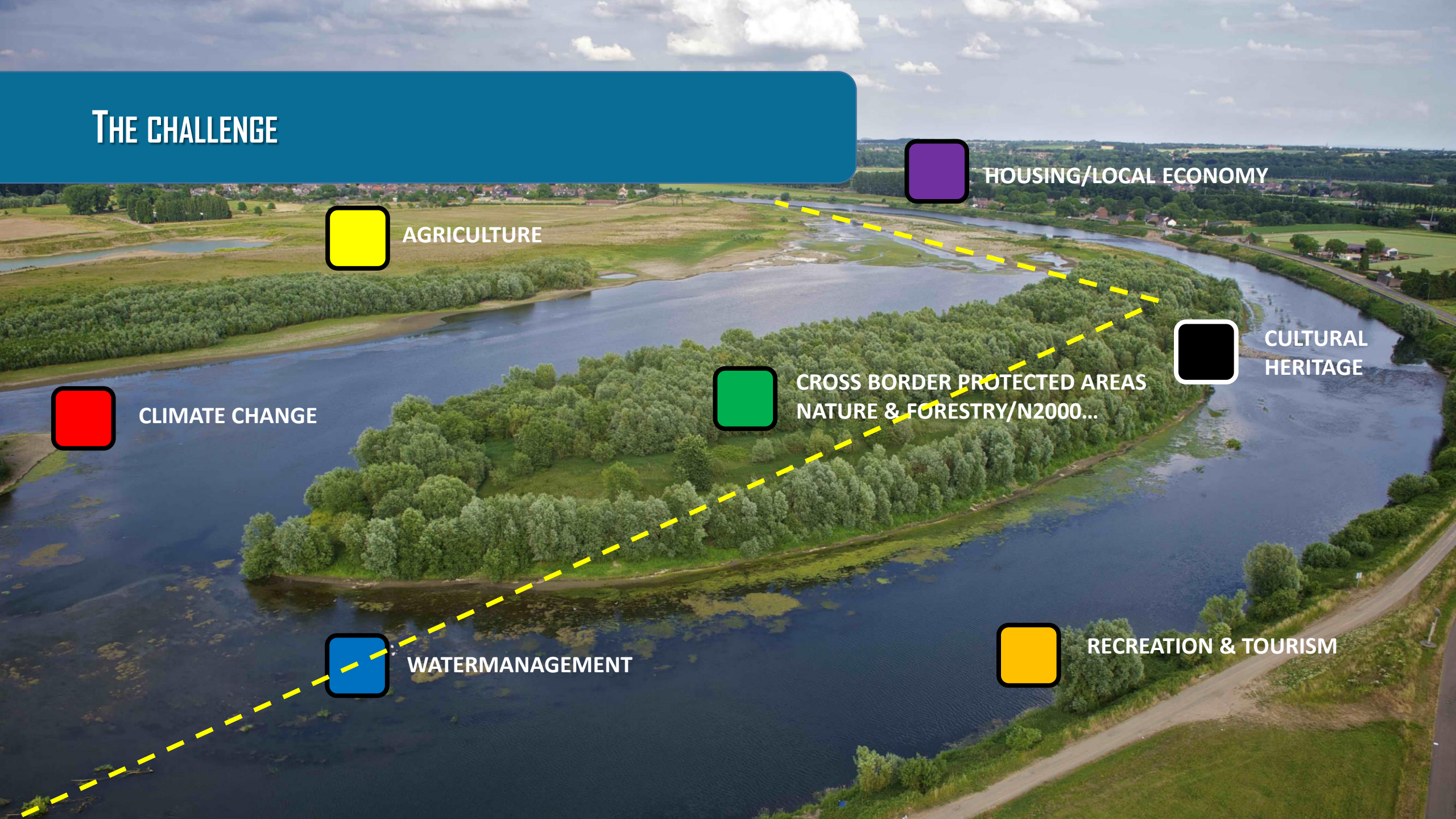
CULTURAL
HERITAGE



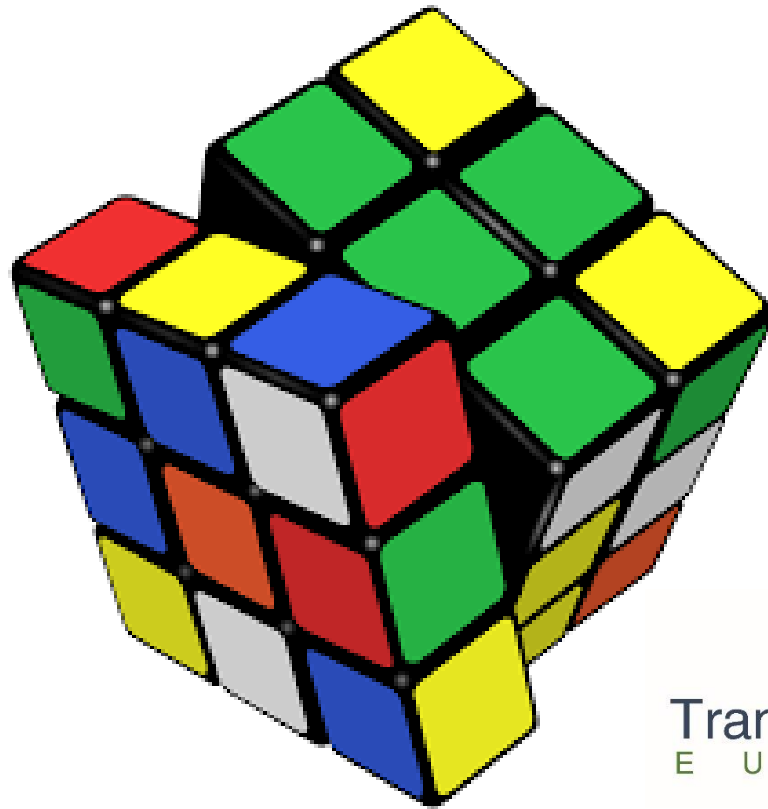
WATERMANAGEMENT



RECREATION & TOURISM



THE CHALLENGE




Transboundary Parks
E U R O P A R C



Transboundary Parks

E U R O P A R C

TRANSBOUNDARY COOPERATION

EUROPARC has created “**Following Nature’s Design**” – **Transboundary Parks Programme**, which sets the standards, showing that although there may be a frontier on a map, we can bring cooperation into mind

The **TransParcNet** meets annually to share examples and best practices on transboundary cooperation.

*The **TransParcNet** is Europe’s platform for unifying ecosystems and people across borders.*



Basic Standards

[measurable activities –
ecosystem approach – green
corridors – cross-cultural
interaction – social & cultural
well-being – raise political
support]

Criteria

[common vision & work plan –
agreement cross-border
cooperation + exchange data –
communication – basis joint
financing]

Fields of work

[indicators on nature
conservation + indicators on
education - research –
monitoring – communication –
mutual understanding]

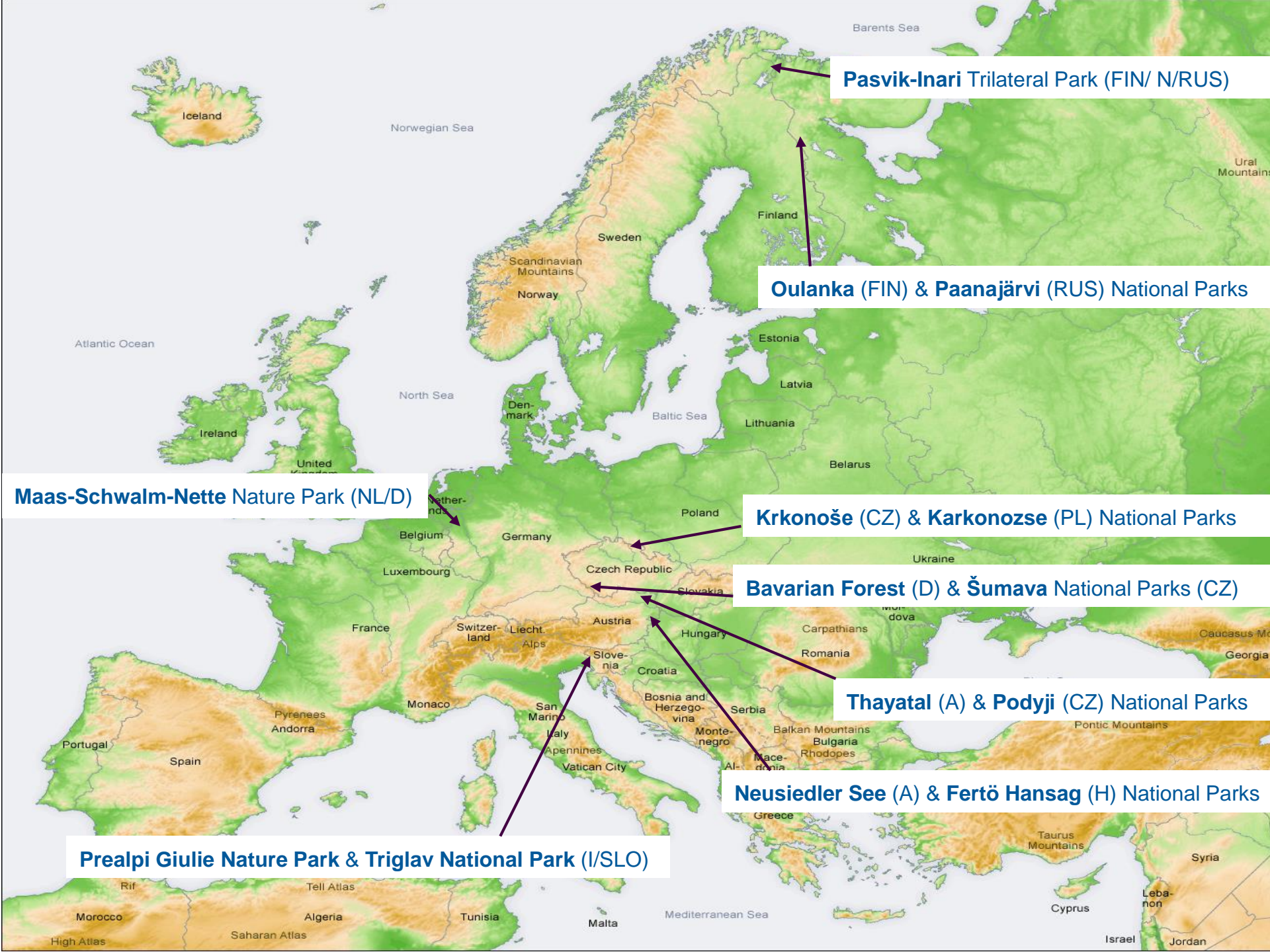
$$1 + 1 = 3$$



Krkonoše National Park,
Czech Republic



Karkonosze National Park,
Poland



Pasvik-Inari Trilateral Park (FIN/ N/RUS)

Oulanka (FIN) & Paanajärvi (RUS) National Parks

Maas-Schwalm-Nette Nature Park (NL/D)

Krkonoše (CZ) & Karkonosze (PL) National Parks

Bavarian Forest (D) & Šumava National Parks (CZ)

Thayatal (A) & Podyji (CZ) National Parks

Neusiedler See (A) & Fertő Hansag (H) National Parks

Prealpi Giulie Nature Park & Triglav National Park (I/SLO)



Transboundary Parks
E U R O P A R R C

10 Transboundary Areas
23 Protected Areas
13 countries

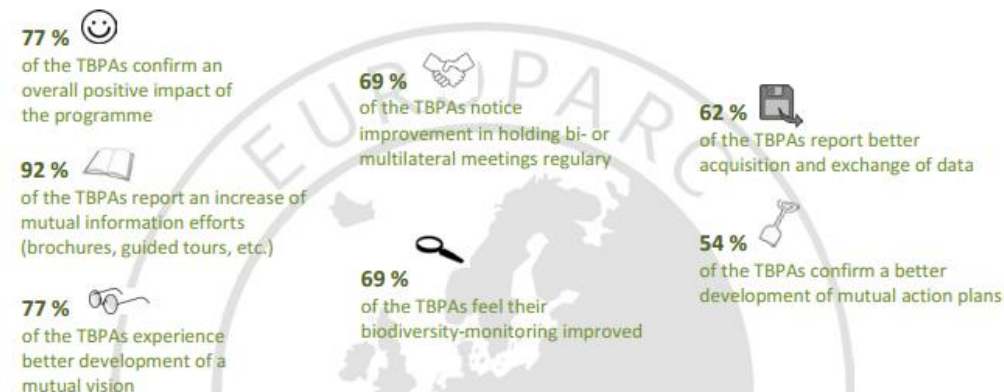
TRANSBOUNDARY COOPERATION

Key Findings after 10 years

- 77% - positive effect
- 92% - increase in information efforts
- 77% - better development in a mutual vision
- 69% - improvement of multi-lateral meetings
- 69% - improved monitoring
- 62% - better acquisition and exchange data
- 54% - better development action plans



Benefits of the EUROPARC Transboundary Parks Programme



General Information

23 protected areas
form 10 Transboundary Areas in 13 countries

> 900.000 ha surface
in total in the Transboundary Areas

> 330.000 ha of N2000
sites within the Transboundary Areas

> 1000 staff members
are employed in the Transboundary Areas

The EUROPARC Transboundary Parks Programme is a valuable and essential instrument for protected areas that adjoin across or lie adjacent to international borders and want to manage their protected areas co-operatively.

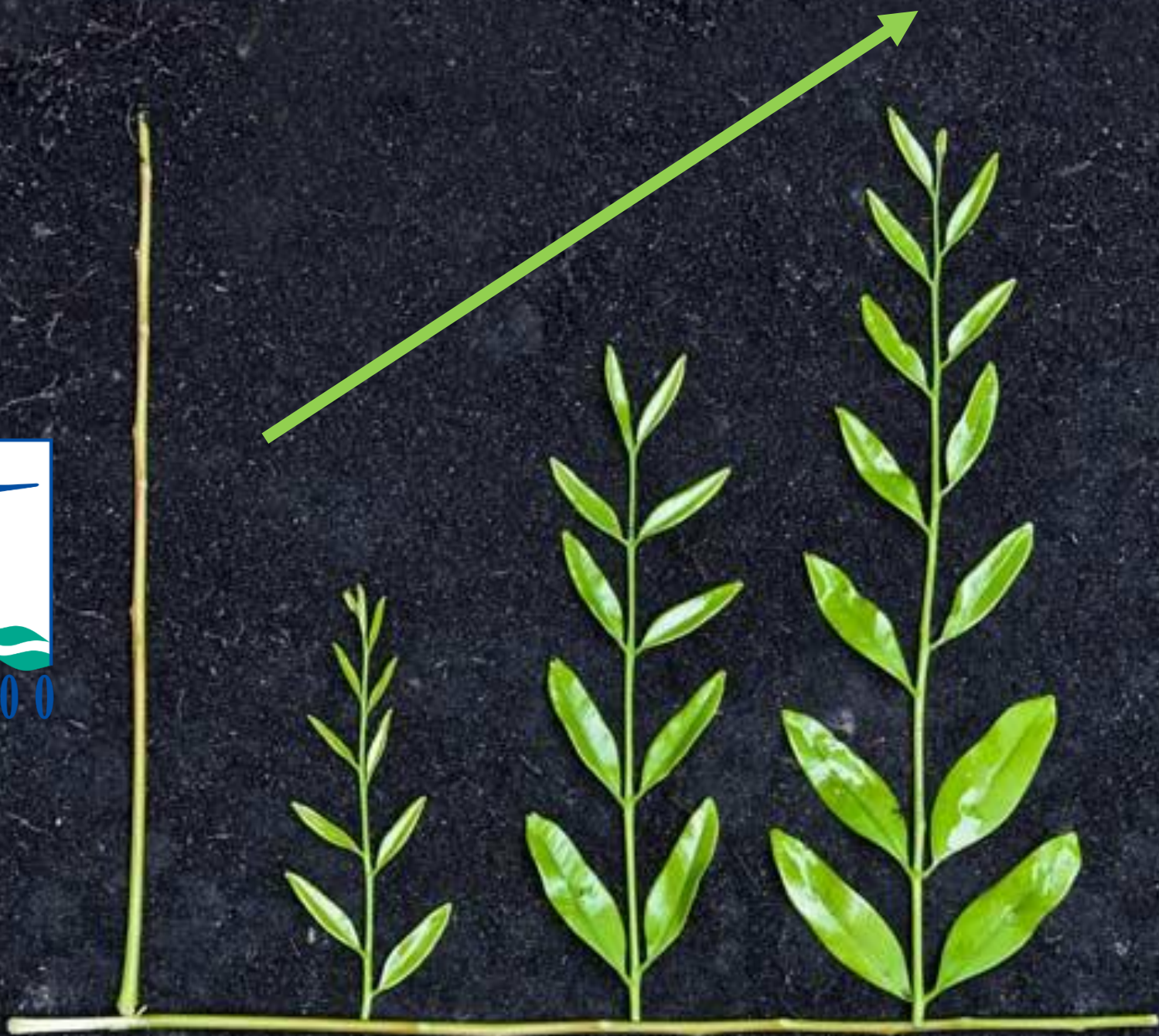
These „Magic Numbers“ show how the EUROPARC Transboundary Parks Programme has brought added value to the management of the participating parks.

Research conducted in October 2011 with over 80 % participation.

EUROPARC represents over 400 members in 36 countries. These include protected areas, governmental departments, NGOs and businesses who manage the green jewels of Europe's land, sea, mountains, forests, rivers and cultural heritage.

NATURE PROTECTION



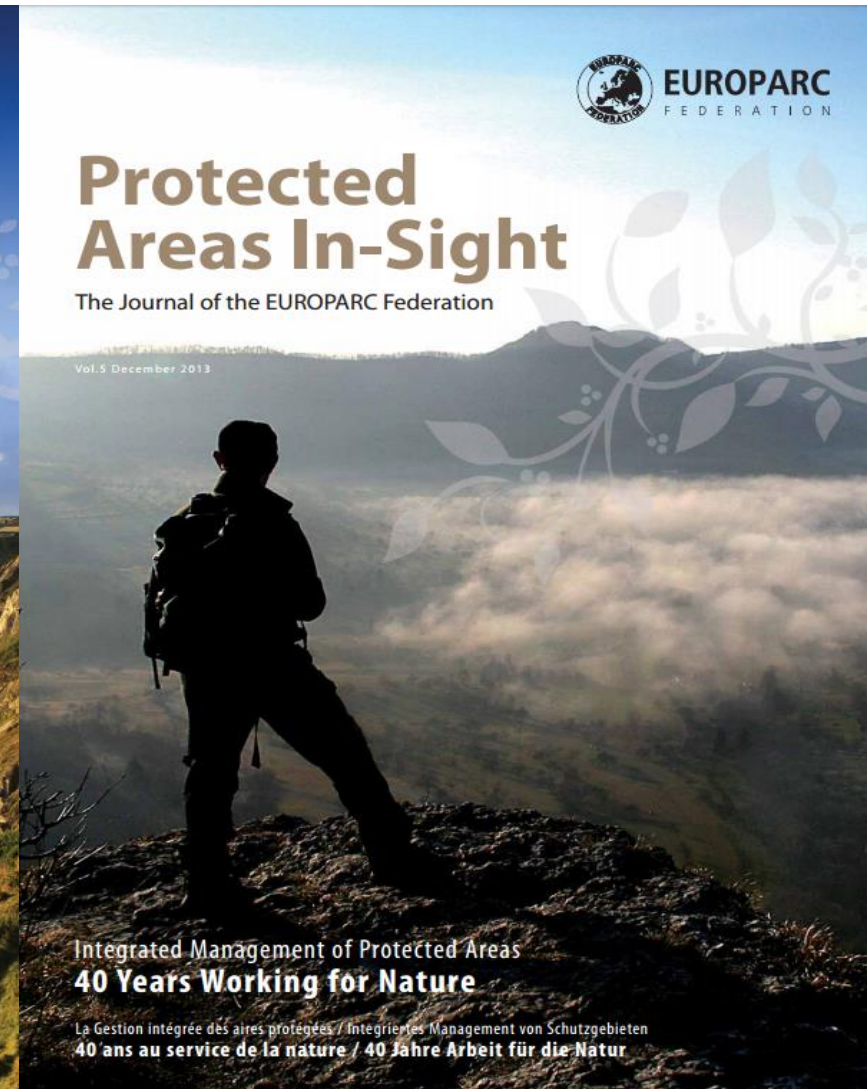
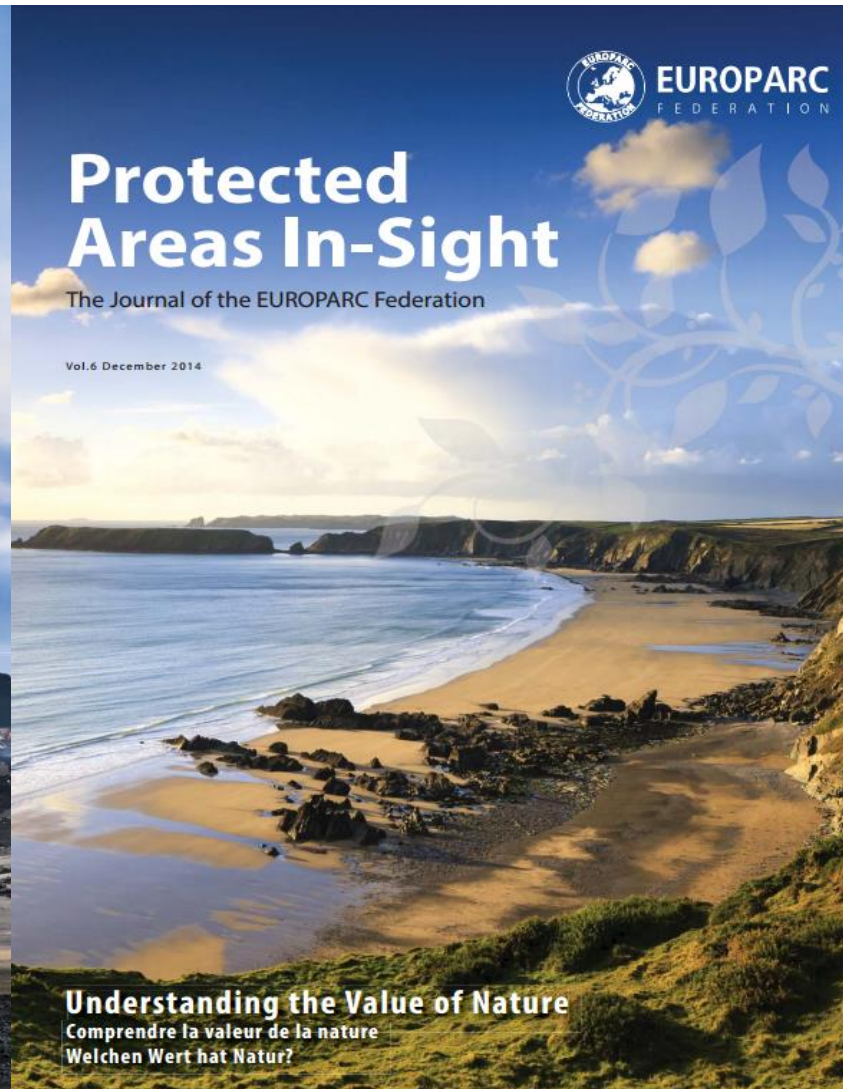




EUROPARC
F E D E R A T I O N

Bringing People Together

PROTECTED AREAS IN-SIGHT



WEBINAR

Visitor Management in Transboundary Parks

26th April 2017 - 15:00 CEST



powered by:



2017
INTERNATIONAL YEAR
OF SUSTAINABLE TOURISM
FOR DEVELOPMENT

ANNUAL CONFERENCE



MESSAGE FROM THE UN SECRETARY-GENERAL OPENS EUROPARC CONFERENCE 2017





EUROPARC
F E D E R A T I O N



**REGIONS
& CITIES**

European Week

Brussels 9-12 October 2017

