

Fáilte  
Welcome

**Cairngorms**  
NATIONAL PARK



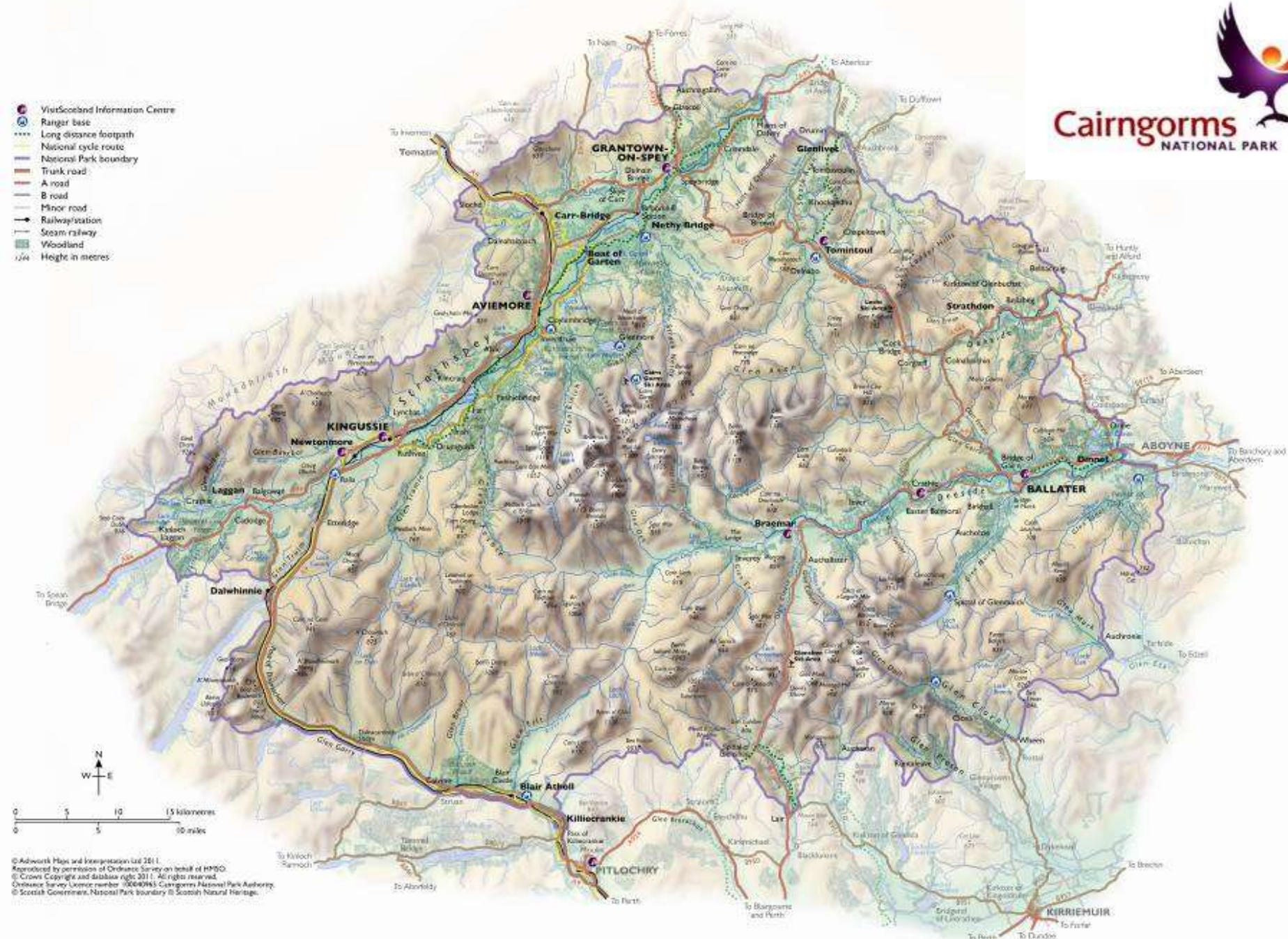
# The Cairngorms National Park



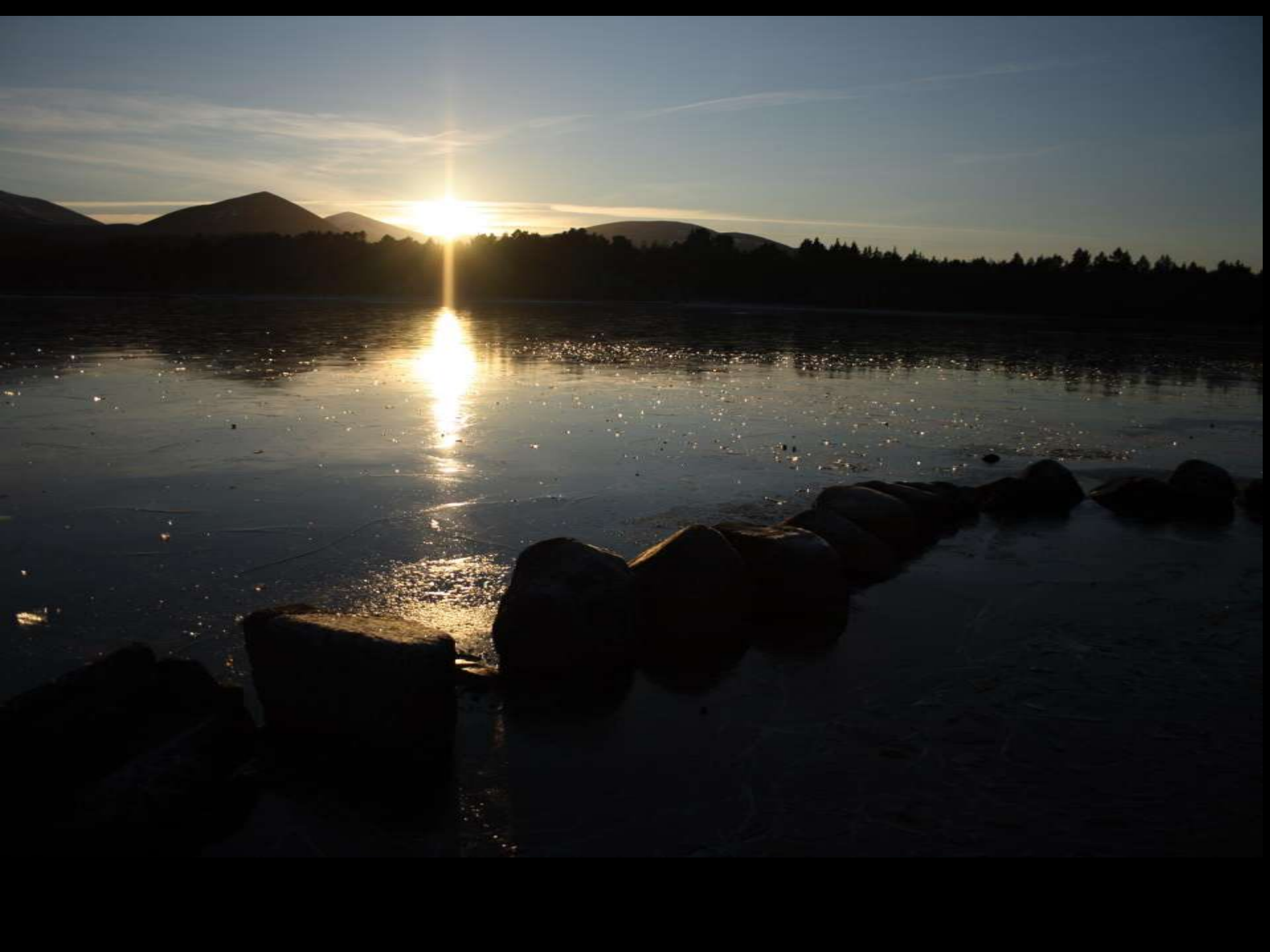


**Cairngorms**  
NATIONAL PARK

- VisitScotland Information Centre
- Ranger base
- Long distance footpath
- National cycle route
- National Park boundary
- Trunk road
- A road
- B road
- Minor road
- Railway/station
- Steam railway
- Woodland
- Height in metres















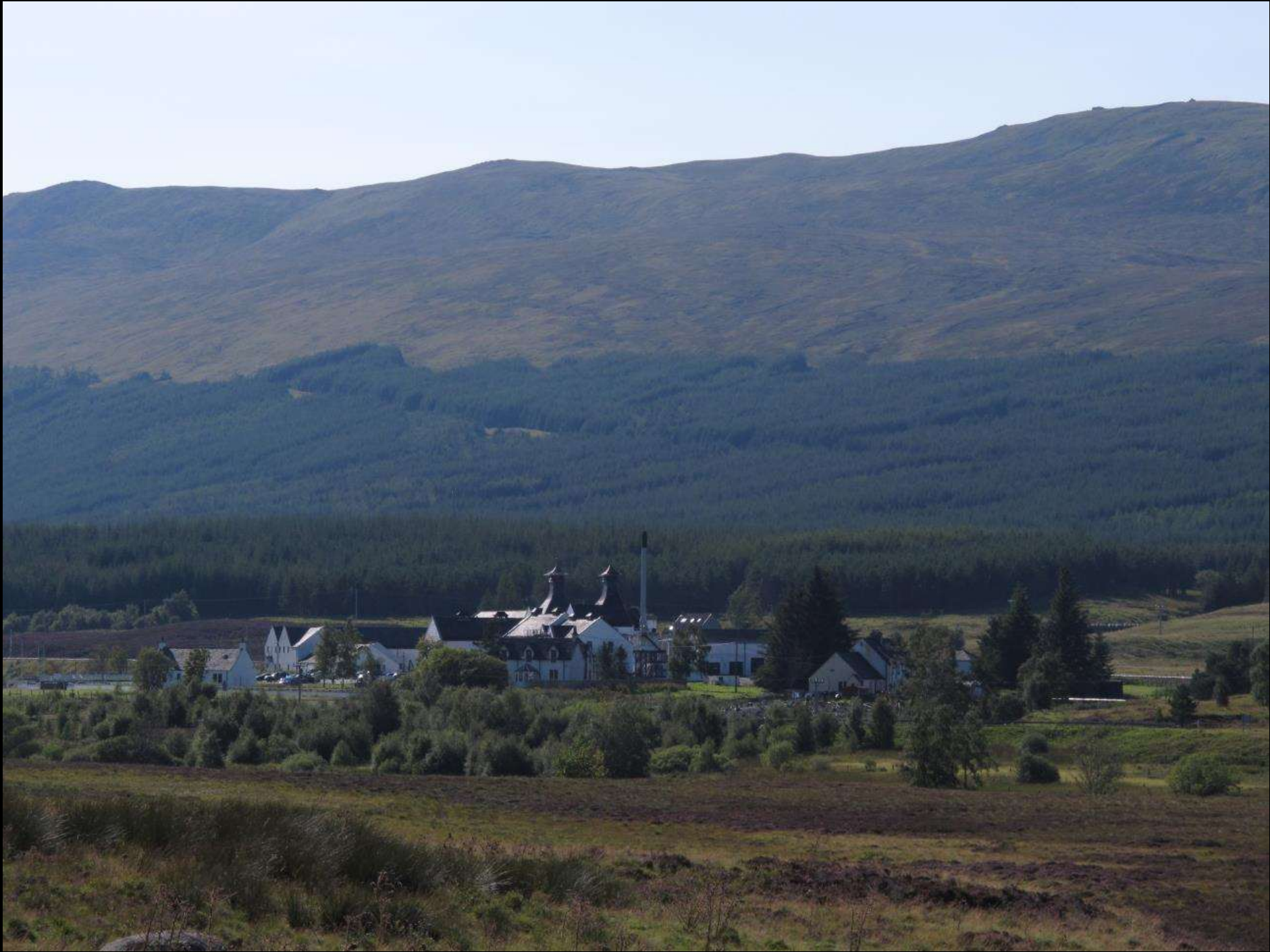


























Delnabo

Braemar  
A 939 (A 93)  
Dufftown  
(B 9008)

KEY  
TLE

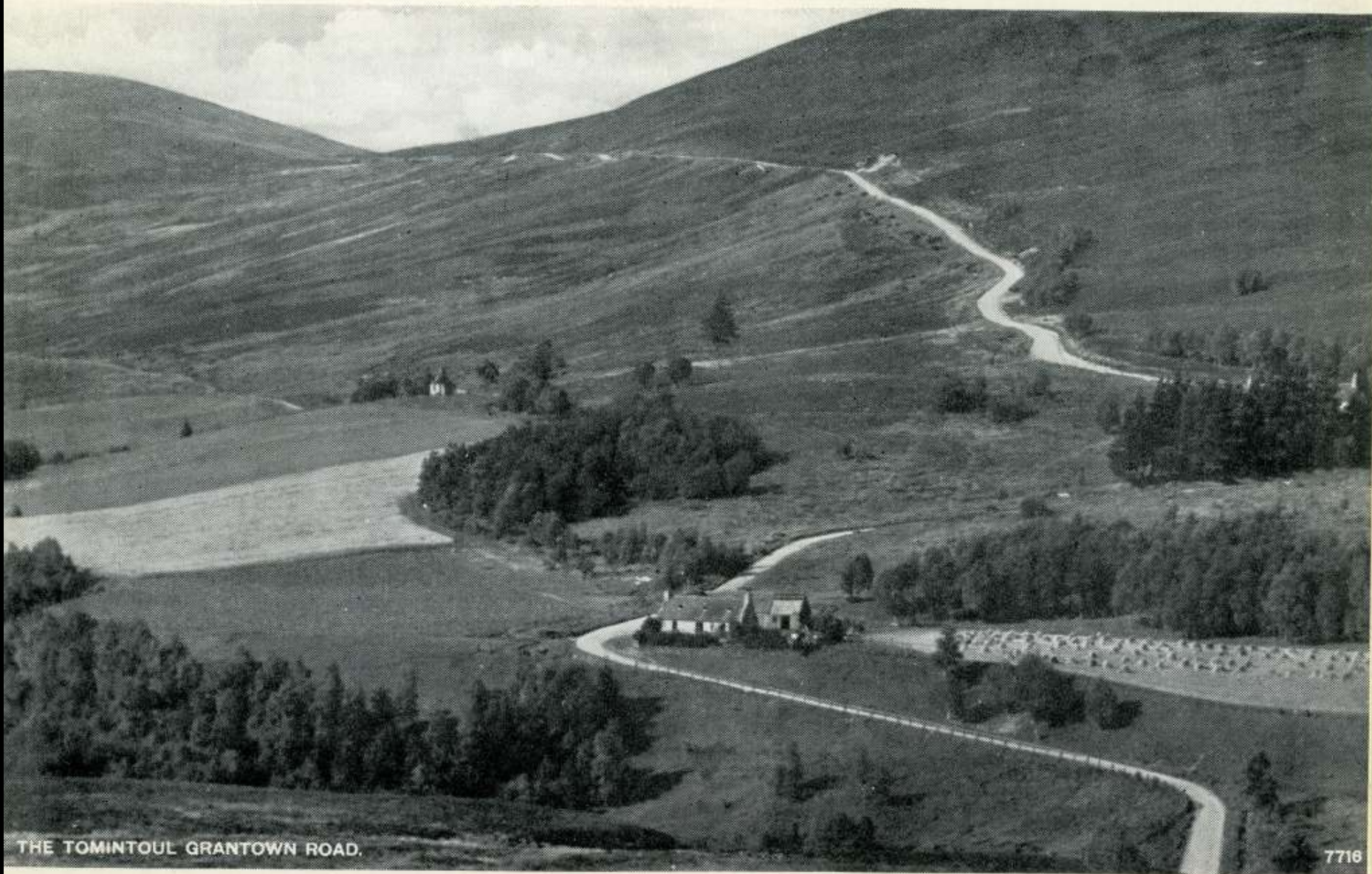
Pioneer Coaches  
GLENDALE  
KILNTER

SY12 UKN









THE TOMINTOUL GRANTOWN ROAD.













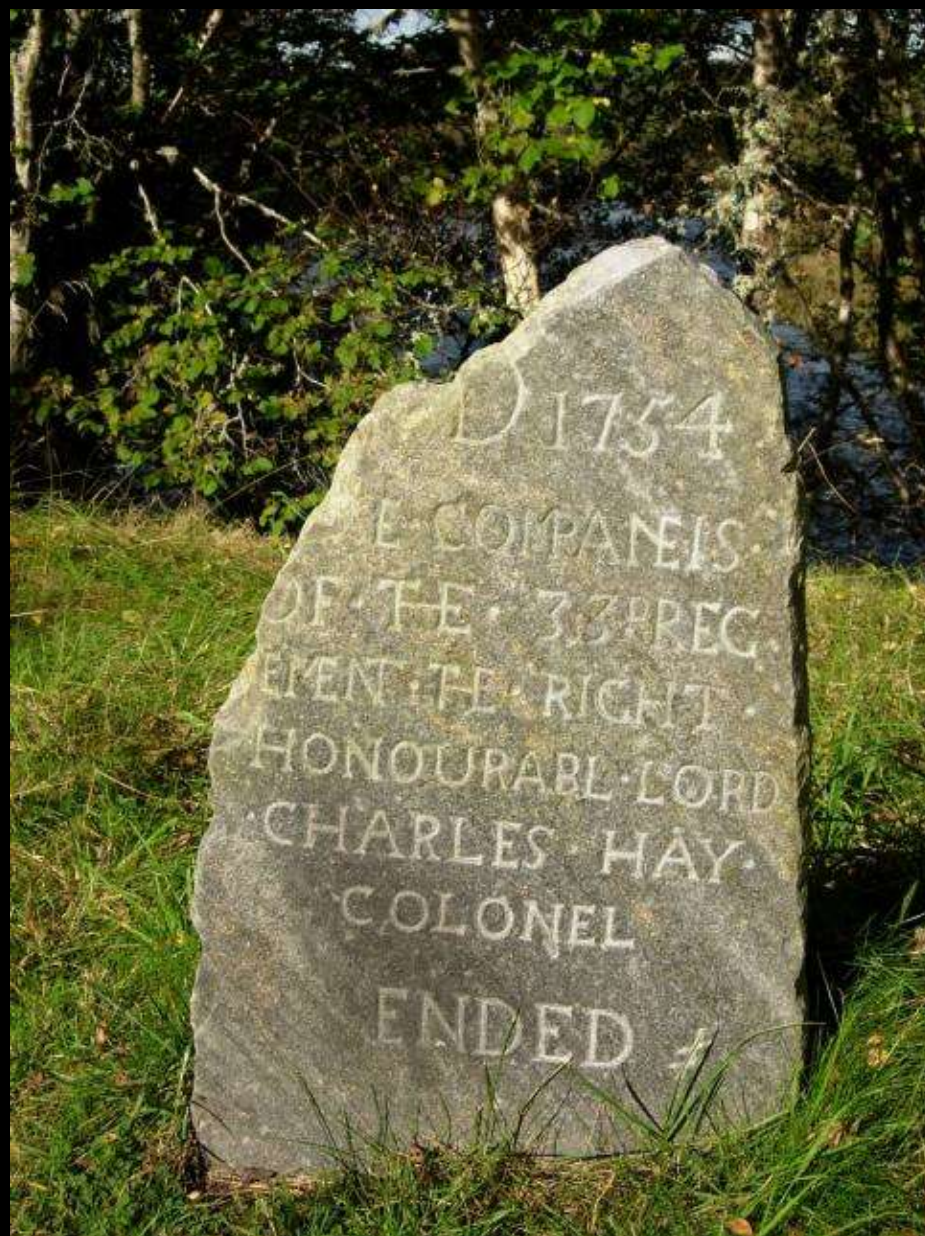












D 1754

OF THE COMPANIES

OF THE 33 REG

MENT THE RIGHT

HONOURABLE LORD

CHARLES HAY

COLONEL

ENDED





















# What landscape changes do we get in the Cairngorms?





































# So who decides how landscape changes?









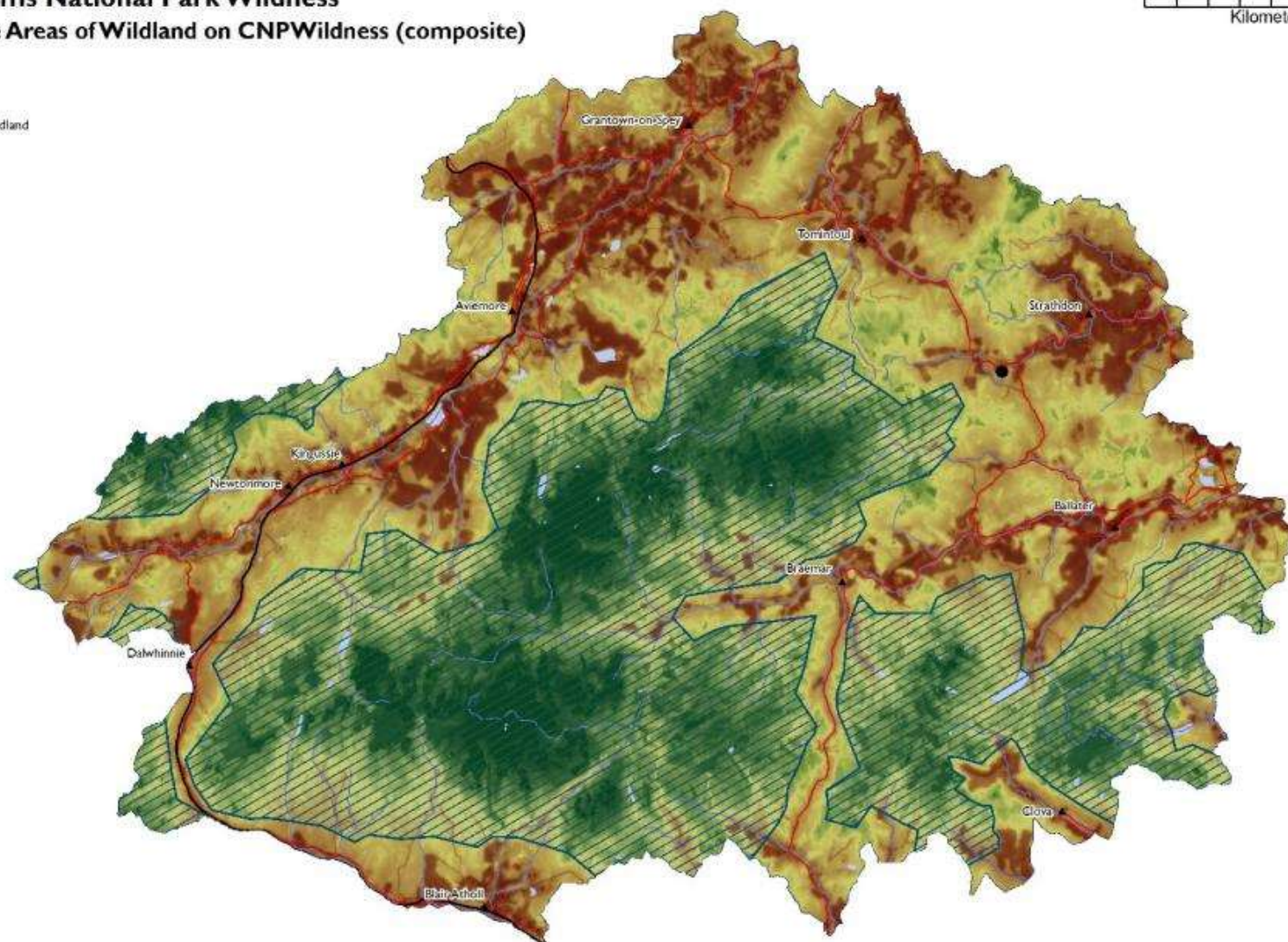


# **Cairngorms National Park Wildness** **SNH Core Areas of Wildland on CNPWildness (composite)**

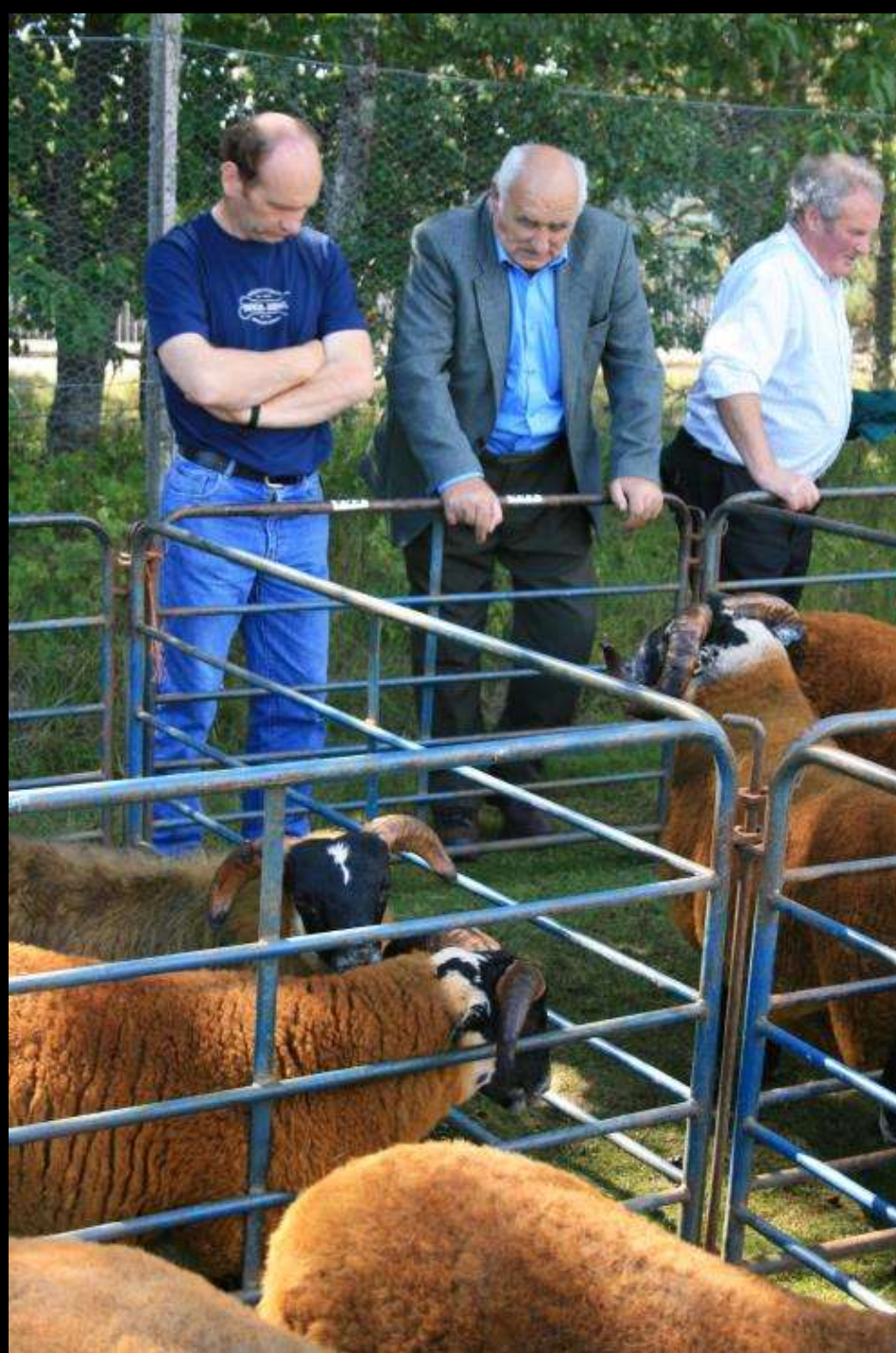
0 5 10 20  
 Kilometers

## **Key**

-  SNH core Wildland
-  Settlements
-  Major Road
-  River
-  Loch
- Relative wildness
-  High
-  Low



Reproduced by permission of Ordnance Survey on behalf of HMSO. © Crown copyright and database right 2013. All rights reserved. Ordnance Survey Licence number 100040965  
 Cairngorms National Park Authority. ©Scottish Natural Heritage ©Intermap Technologies ©Highland Birchwoods (on behalf of the Caledonian Partnership).





















# Future Change in the Cairngorms



**Cairngorms**  
NATIONAL PARK

# Landscape Scale Conservation

Montane scrub

Moorland

Forestry

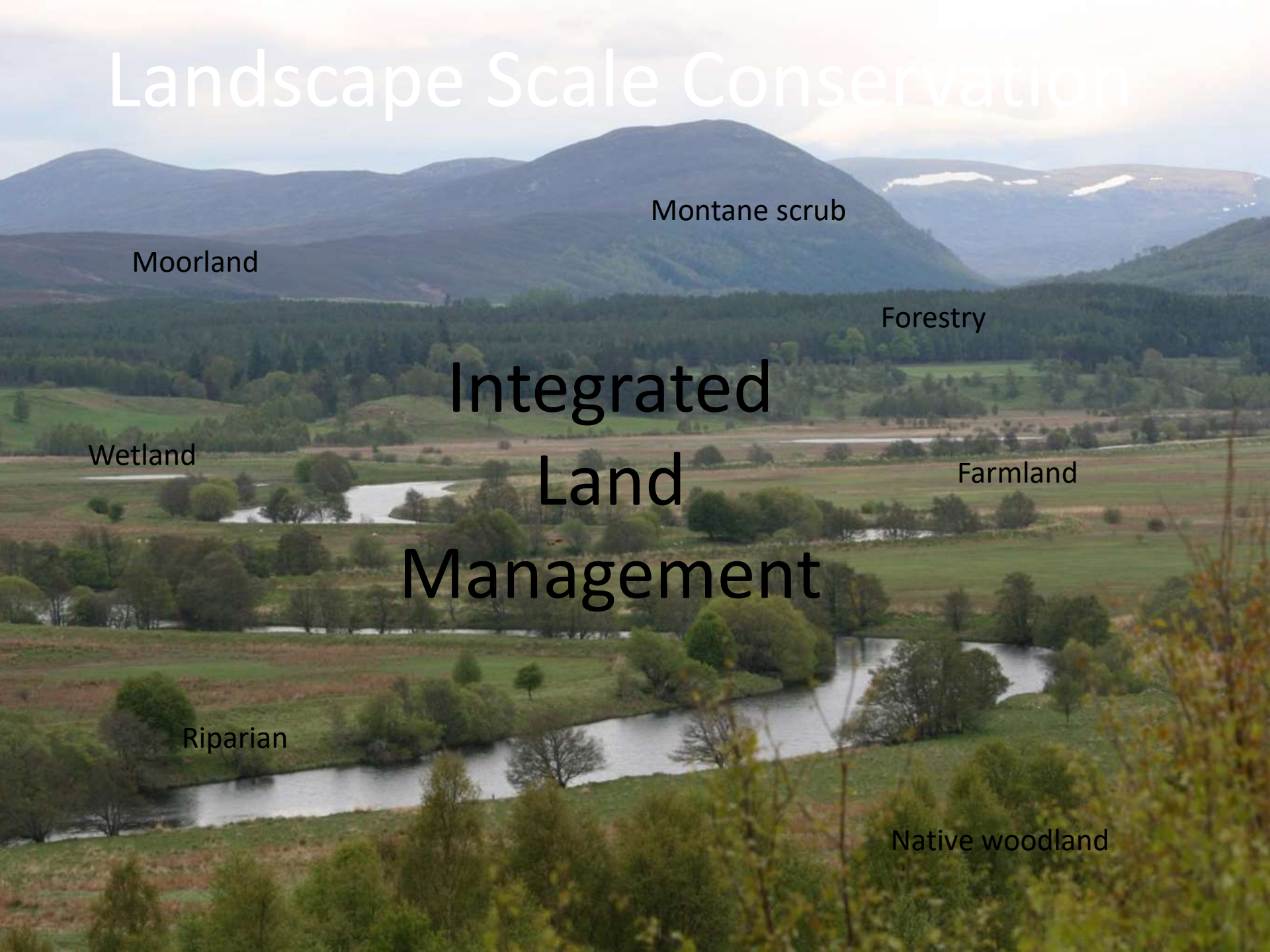
## Integrated Land Management

Wetland

Farmland

Riparian

Native woodland





CAIRNGORMS  
NATIONAL PARK AUTHORITY

UGHORRAS PÀRK NÀIRNÀS  
MHONAIDH RUAIDH

**Current woodland and  
woods with capercaillie  
records since 2007 in the  
Cairngorms National Park.**

**Key**

- Current established woodland
- Current young woodland
- Woods with capercaillie records since 2007
- CNP Boundary



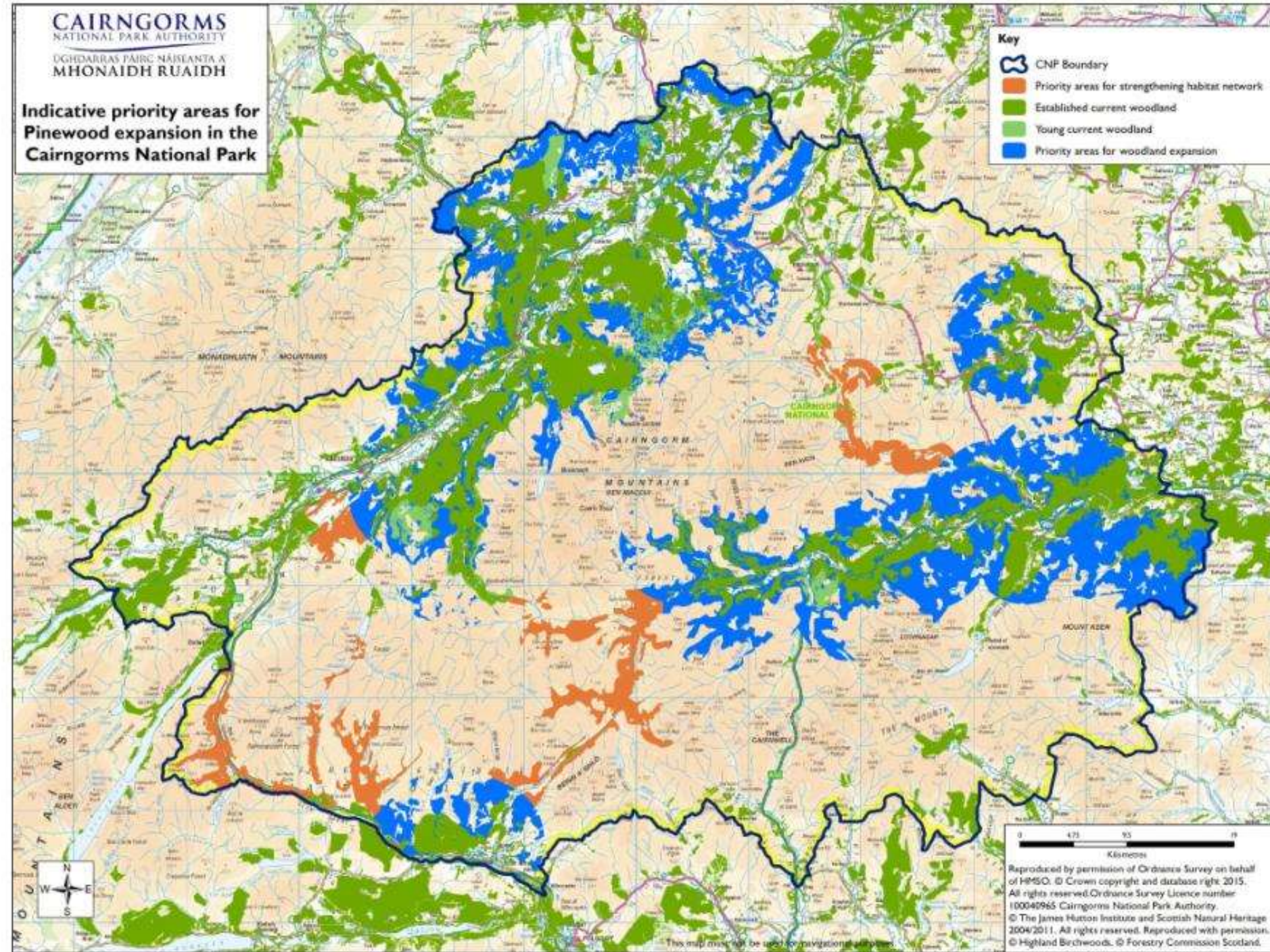
Reproduced by permission of Ordnance Survey on behalf of HMSO. © Crown copyright and database right 2014.  
All rights reserved. Ordnance Survey Licence number 100040965 Cairngorms National Park Authority.  
© Highland Birchwoods. © Forestry Commission Scotland.  
This map must not be used for navigational purposes.







**Indicative priority areas for  
Pinewood expansion in the  
Cairngorms National Park**























# Cairngorms Scenic Photo Posts



## Recording Our Changing Landscape

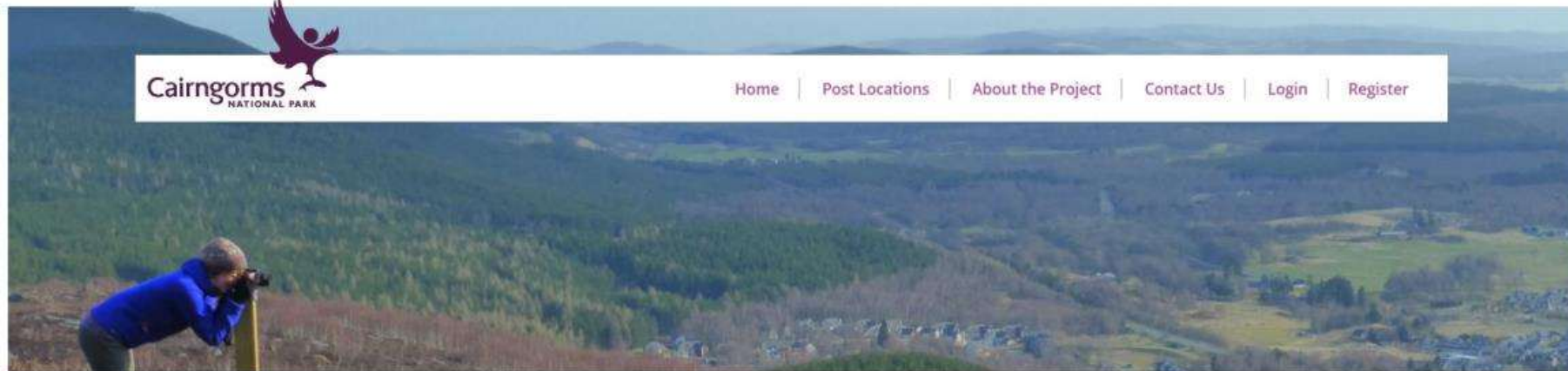








[Home](#) | [Post Locations](#) | [About the Project](#) | [Contact Us](#) | [Login](#) | [Register](#)



## Cairngorms Scenic Photo Posts

The Cairngorms Scenic Photo Posts project is a pioneering citizen science initiative to gather information about our landscapes as they change from day to day and year to year.

### Recording our changing landscapes

Having found the post, you pop your camera, phone or tablet into the bracket, take a photo and then you can register and upload the image on to the Photo Posts website and contribute to a visual record of our changing landscape. Whether you are simply taking one photo whilst on holiday or you become an avid Photo Post volunteer ('bagger') we welcome your photographic contributions and your comments too.



Tomintoul then and now

[Visit Photo Posts Map >](#)

### Login

Username

Password



[Sign in >](#)

[Register >](#)













# Any Questions?



email: [Matthewhawkins@cairngorms.co.uk](mailto:Matthewhawkins@cairngorms.co.uk) Telephone: 01479 873535