



WEBINAR

Facing Climate Change
in Natura 2000 sites & Protected Areas

6th November 2018 - 14:00 CET

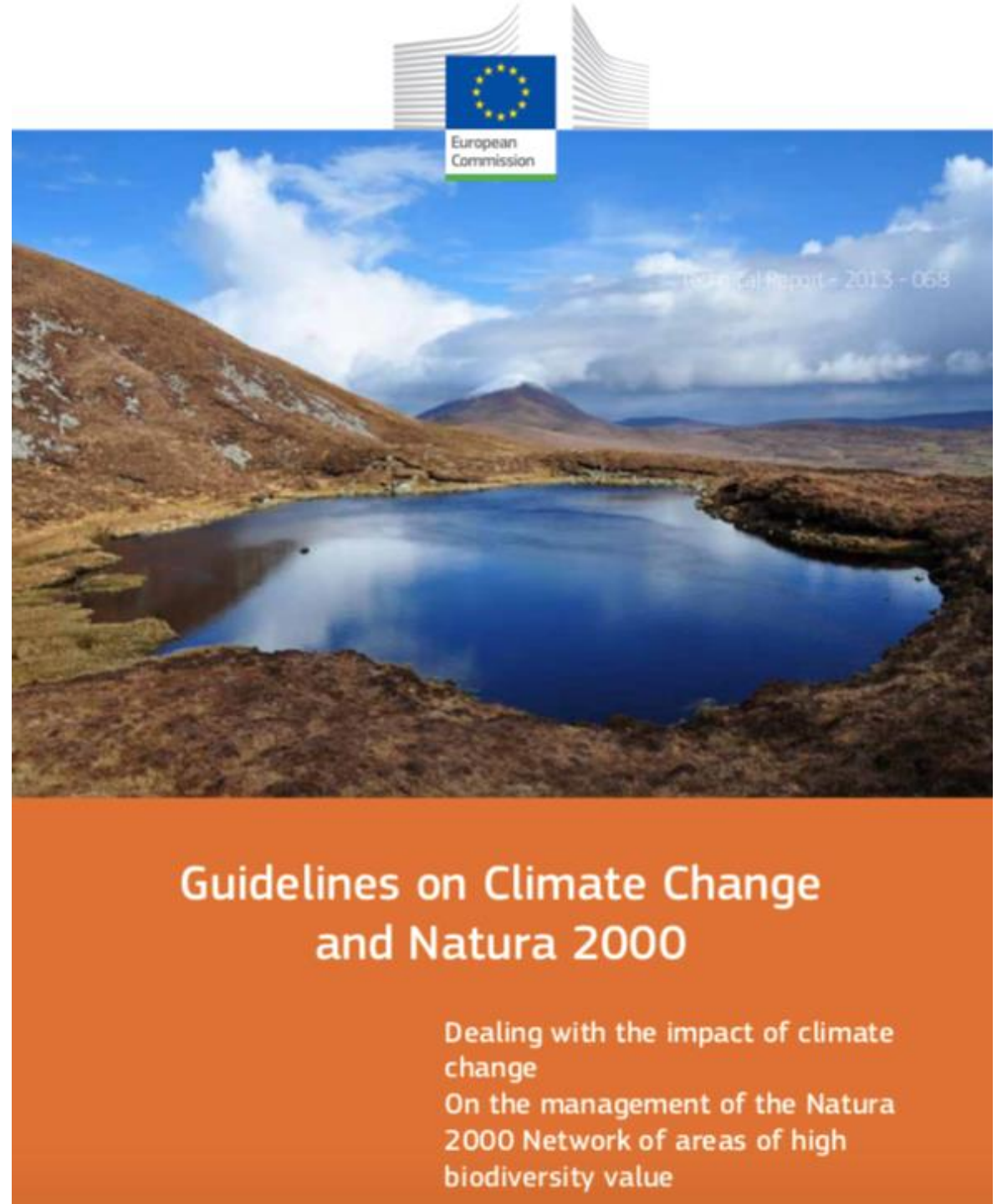
more info at: europarc.org/europarc-webinars

Main Impacts to the Natura 2000 Sites

- change of natural habitats (distribution) of species
- changing distribution (and composition) of habitat types
- **loss of mountain species and habitat types**
- **Loss of endemits and strictly specialized species**

What We Can Do?

- Adaptation
- Mitigation



Role of Natura 2000?

(EU Climate Change Adaptation Strategy 2013)

- in general: to support ecosystem resilience and connectivity
- to mitigate impacts to sites by active management
- **a need to develop specific measures suiting to new climate conditions!**

- For more information, please consult:

http://ec.europa.eu/environment/nature/index_en.htm

<http://ec.europa.eu/environment>