



Lauku Ceļotājs

www.celotajs.lv

How to plan and monitor long distance walking trails

By the president of the association Ms. **Asnate Ziemele**

About Latvian Rural Tourism association

- **Established in 1993;**
- **Today: ca 350 members – rural tourism entrepreneurs;**
- **Main aims:**
 - » To develop & promote rural areas & sustainable tourism there;
 - » To represent & protect interests of its members on a national & international level;
 - » To control the quality of the environment and tourism services;
 - » To take a part in the development of legislation documents connected to tourism, development of rural areas and nature protection



Hiking – sustainable way of traveling

- **Minimal Carbon Footprint**
- Traveling to less known areas **off season** – preventing overtourism
- Beneficial to the **local communities**
- Protecting and enhancing **opportunities for the future**
- Valuing the environment and looking after **natural resources**



Motivating hikers to be sustainable

- Use re-usable water bottles / buy products with less packaging
- Carry your trash with you
- Leash your dogs
- Keep quiet and do not disturb the wild animals
- Pay attention to environment protection notices, stick to the path
- Use local services and accommodations



Forest trail Project

- Project "**Long distance cross-border hiking trail "The Forest trail"**" is part-financed by the European Union and European Regional Development Fund **Central Baltic Programme.**
- **Duration:** 01.04.2019.-30.06.2021.
- **9 project partners from LV and EE**
- **Goal - to develop a sustainable cross-border tourist attraction,** promoting great biodiversity, beautiful forest landscapes, national parks and protected areas, meadows that represent ancient landscapes, birdwatching, mushrooming and hiking.
- **Financial support of EU programme Central Baltic programme: € 960 418**
Partners contribution: € 255 301

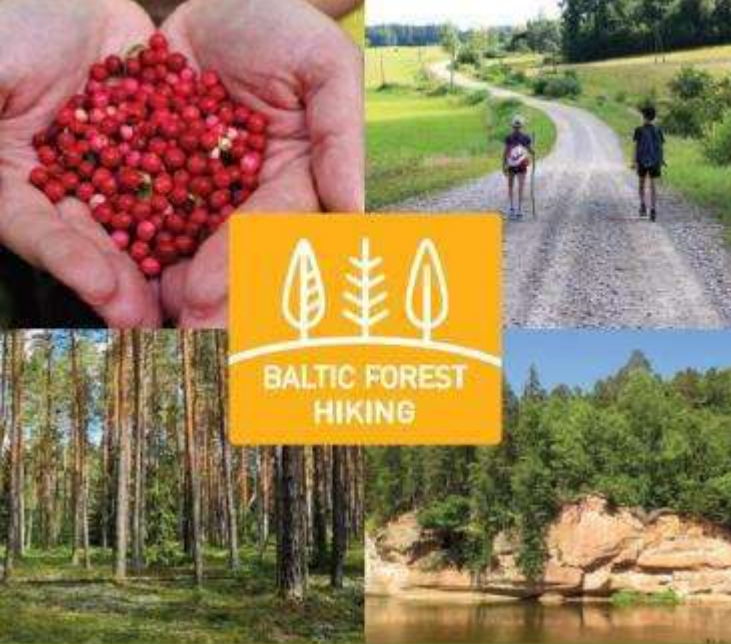


Interreg
Central Baltic

celotajs.lv

Forest Trail ~1050km from Riga – Tallinn

<https://baltictrails.eu/forest/>




**BALTIC FOREST
HIKING**

FOREST TRAIL

long-distance forest hiking trail in
Latvia and Estonia

The Forest Trail is a long-distance hiking route from Riga, Latvia, to Tallinn, Estonia, passing through the most afforested territories in both countries. The route is split up into approximately 50 one-day routes, each of them around 20 kilometres long. Some of the routes are more difficult than others, so please choose the ones that are most appropriate for you. The Forest Trail is planned as part of the E11 European long-distance hiking path.



LATVIA / ESTONIA



Forest trail – Northern part of E11 long-distance hiking path

- Currently the trail is 2,070 km long
- E11 crosses The Netherlands, Germany and Poland
- Membership in ERA - European Ramblers Association

<https://www.era-ewv-ferp.org>



Project approach

- 3 crucially important stakeholder groups: **local people, local tourist service providers, local municipalities**
- Identification of the best route itinerary **relying on local knowledge**
- **Inspection trips**, open for public
- **Trail marking**, implementation of **small scale infrastructure elements**
- **Marketing and IT solutions**
- **Trade fares and travel fares**

Trail inspection hikes





www.celotajs.lv





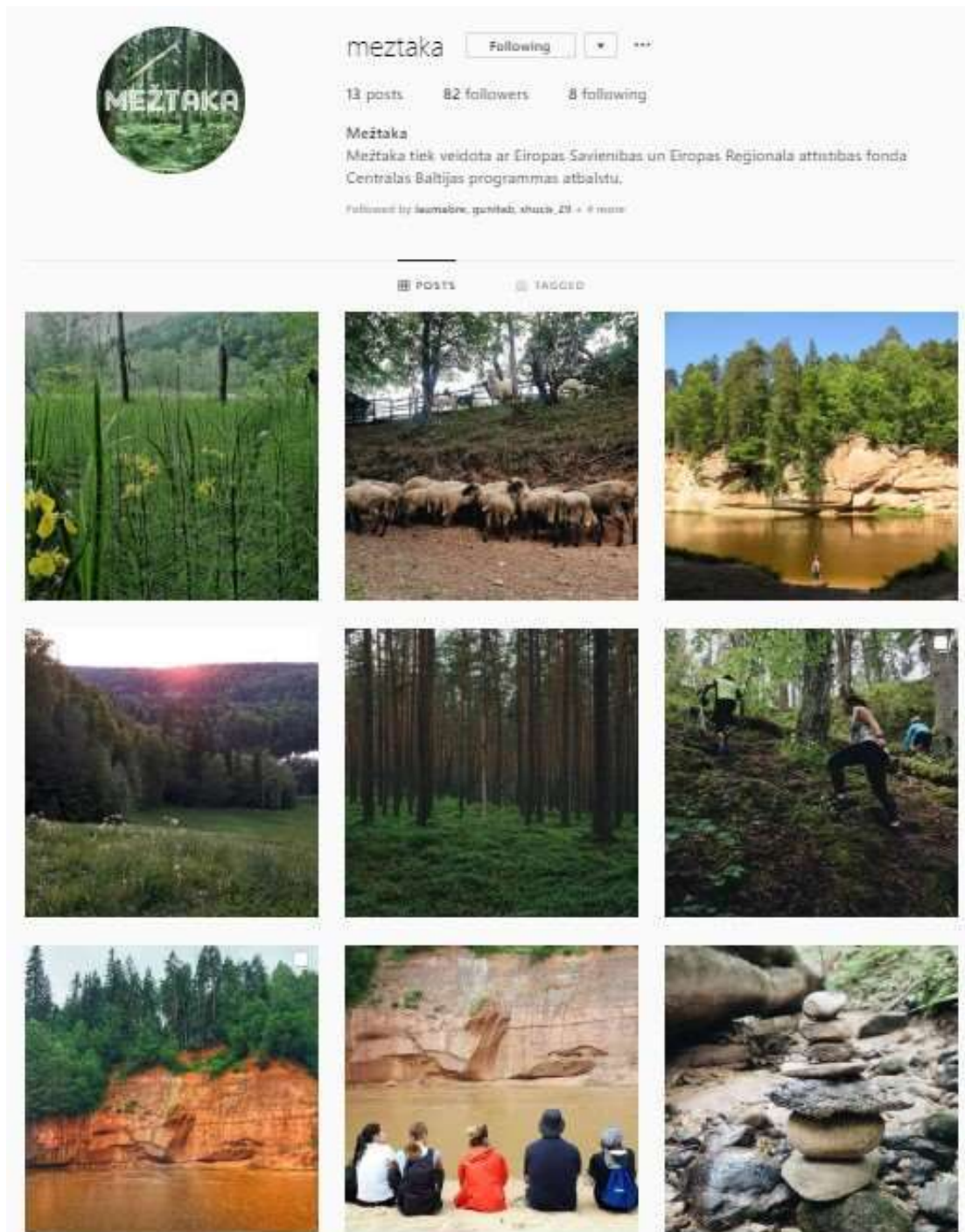




Active social media profiles – important for the personal communication.

Instagram

www.instagram.com/meztaka



Social media – Facebook

www.facebook.com/meztaka

www.facebook.com/metsamatkarada



celotajs.lv

Previous experience with Baltic Coastal Hiking trail

coastalhiking.eu



- **Latvia -Estonia**
- **1200 km**
- Sandy & stony beaches, cliffs & outcrops;
- **700 sights**
- Historic coastal towns, fishermen villages & 2 capitals- Riga , Tallinn
- Complete tranquillity & remoteness <-> areas with cafes, pubs & souvenir shops



EUROPEAN UNION

Route marking



Infrastructure



Involving service providers, locals: handbook, network seminars, study tours, workshops



- Who is the long-distance hiking target audience?
- What are the hikers needs?
- How to create a new product for the hikers?
- How to organise group tours?



Examples of the printed materials:

>>> Baltic Coastal Hiking tourist brochure

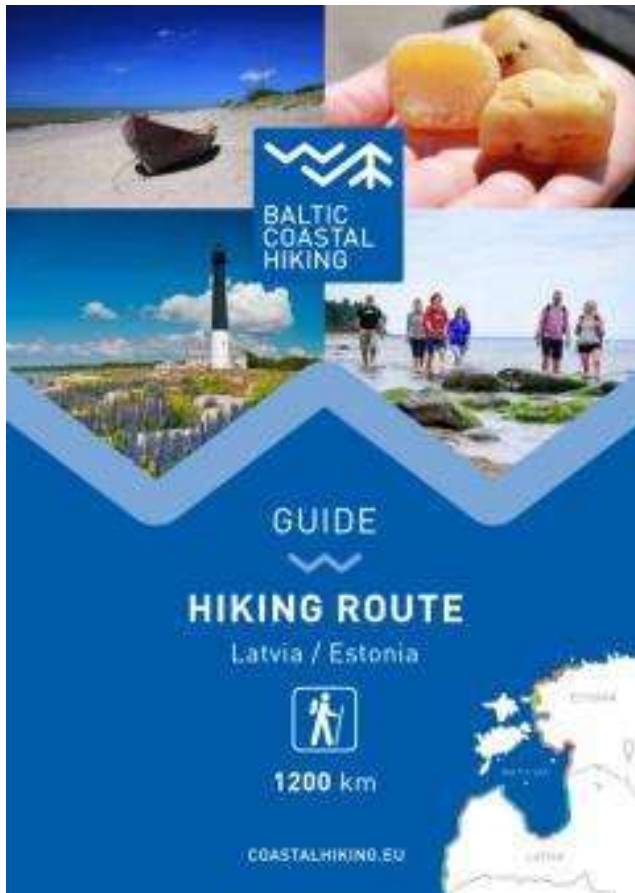
- The brochure introduces the Baltic Coastal Hiking route along the Baltic Sea coast between Riga and Tallinn.
- Available in 5 languages (LV, EE, RU, DE, ENG)



Examples of the printed materials:

>>> Baltic Coastal Hiking Guide

- 60 one-day routes described in detail, including accommodations, services and practical information.
- Available in 5 languages (LV, EE, RU, DE, ENG)



...each day is downloadable/printable in web

BALTIC COASTAL HIKING

EN ET LV DE RU

NEWS

COASTAL HIKING

Facts
Practical info
Itinerary
Tours
Event Calendar
Publications
Marketing

MAP

DESTINATION

ABOUT US

f i e

Login

50th Anniversary

Baltic Coastal Hiking First conference and official opening of the BICH in Baltica
September 15-16, 2017

Itinerary / Little wave sea / Day 16

Little wave sea

Day 16. Kolka - Ģipka.

Overview Info Photo Map Worth seeing Services

Kolka - Ģipka Along The "Closed Coast"

At Cape Kolka, when turning towards the Gulf, you can clearly see the difference between the "Great Sea" and the "Little Sea". The first 10 km of the Baltic Coastal Hiking Route lead through the coastal Park; first, past pine trees that are washed into the sea, past the building of a ship berth and Ēvazi Bluff which is surrounded by an unusually narrow sandy beach and dark alders. The next section of the trail leading to Ģipka also has a narrow beach, but it is bordered by the rich springfens and the mouths of small streams that are shallow. In the past, the seacoast of the Sillene National Park was a closed territory for two centuries; it was a frontier zone and a nature reserve.

At Cape Kolka, when turning towards the Gulf, you can clearly see the difference between the "Great Sea" and the "Little Sea". The first 10 km of the Baltic Coastal Hiking Route lead through the coastal Park; first, past pine trees that are washed into the sea, past the building of a ship berth and Ēvazi Bluff which is surrounded by an unusually narrow sandy beach and dark alders. The next section of the trail leading to Ģipka also has a narrow beach, but it is bordered by the rich springfens and the mouths of small streams that are shallow. In the past, the seacoast of the Sillene National Park was a closed territory for two centuries; it was a frontier zone and a nature reserve.

26. DIENA
Carmikava
Saulkrasti - Lauči
Vairi uz Vidzemes akmeņainajiem krastiem

27. DIENA
Carmikava
Saulkrasti - Lauči
Vairi uz Vidzemes akmeņainajiem krastiem

ДЕНЬ 26-й
Царникова
Сәулкрасти - Лауči
Вярши уз Видземес акмењайим крастием

ДЕНЬ 27-й
Царникова
Сәулкрасти - Лауči
Вярши канењестас Видземес акмењайим крастием

DAY 26
Carmikava
Saulkrasti - Lauči
The Gate To The Rocky Seashores of Vidzeme

DAY 27
Carmikava
Saulkrasti - Lauči
The Gate To The Rocky Seashores of Vidzeme

USEFUL INFORMATION

- A hard sandy beach, a forest trail next to the pine trees washed into the sea.
- Medium
- You can wade across the brooks, the Mednasilupe River (a bridge around 1,3 km away from the sea) and the Pilsupe River (a bridge 0,3 km away) during low water.
- None.
- In case of strong NE and E winds, the coast may be bathed by the waves in some places. Then it is necessary to choose alternative forest trails. There are no ATMs in Kolka.
- Between the Mednasilupe River and the Pilsupe River a forest road-trail stretches for 6 km alongside the sea.

Patik šajā

Examples of the printed materials:

>>> Baltic Coastal Hiking Tour Manual

- **15 hiking tours** for one and multiple days (up to 16 days) in Latvia and Estonia, available in **2 languages** (DE, ENG)
- Includes the **most interesting and scenic coastal areas** of Latvia and Estonia
- Manual provides schematic **tour map**, information about **the mileage**, level of **difficulty**, outstanding **sightseeing objects**, **practical information** about the road surface and **starting / returning points**.



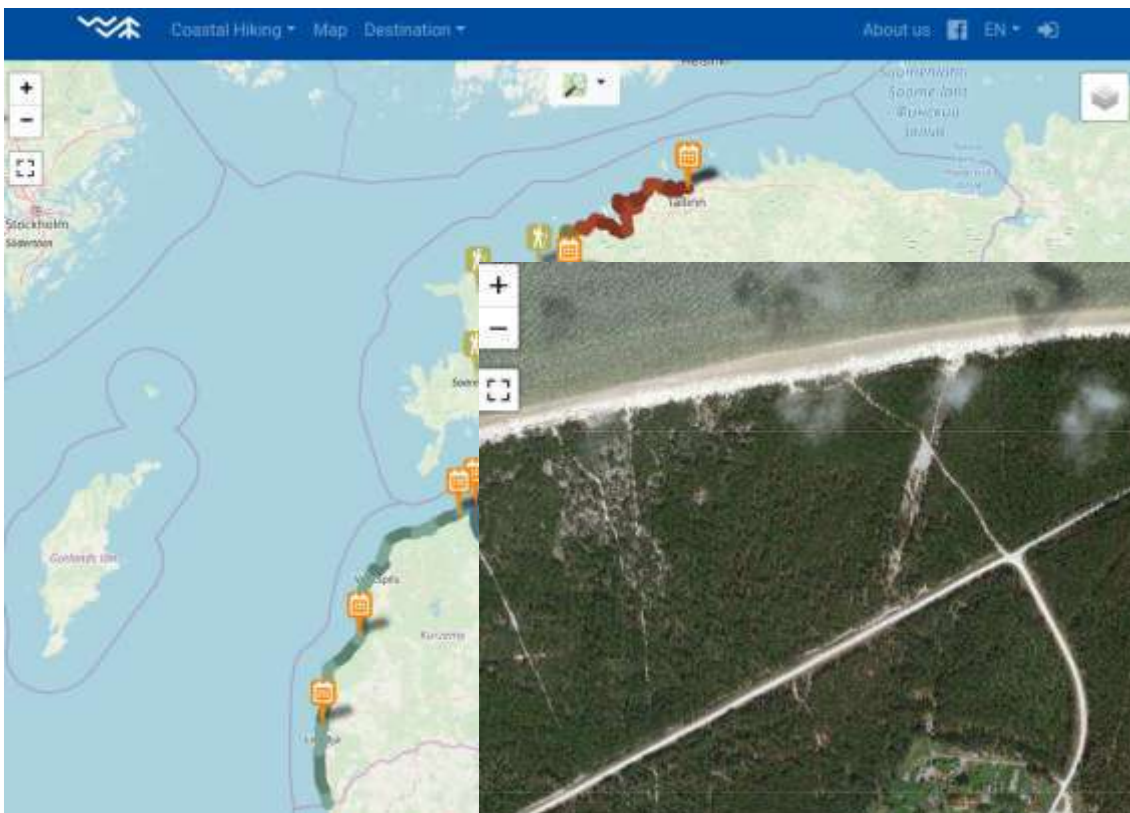
Baltic Coastal Hiking trail digital

coastalhiking.eu

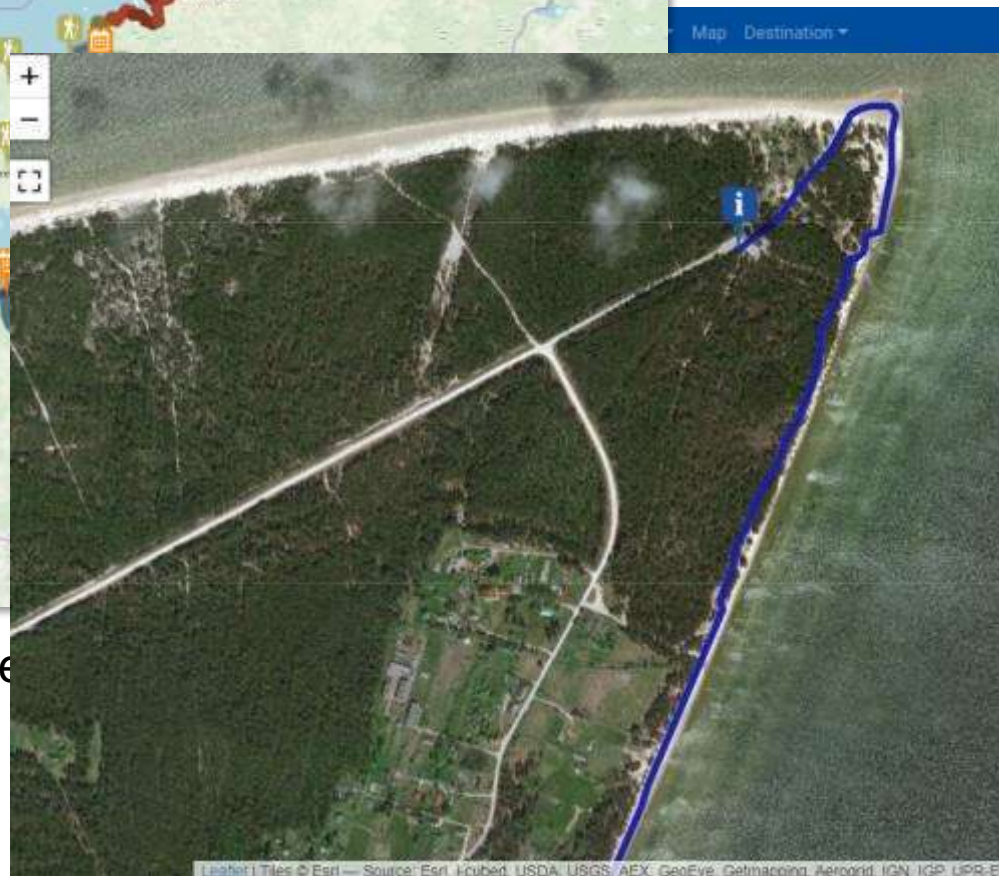
The image shows a screenshot of the Baltic Coastal Hiking website, specifically the online calendar for September 2019. The website is displayed in a browser window with multiple tabs open, including Google Maps, www.celotajs.lv, www.facebook.com, and the current page, www.coastalhiking.eu. The website features a blue header with the logo and navigation links for EN, ET, LV, DE, and RU. A sidebar on the left contains links for NEWS, COASTAL HIKING (with sub-links for Facts, Practical info, Itinerary, Tours, and Event Calendar), Publications, Marketing, MAP, DESTINATION, and ABOUT US. The main content area displays the title "Baltic Coastal Hiking Calendar of Coastal e" and "September 2019" with navigation arrows and a "today" button. Below this is a calendar grid for September, with dates 2 through 12 visible. A blue banner highlights the "Jüri Jaanson Two Bridges Run" and "Estonian food month" events. To the right, there is a section for "Jūnijs 2019" (June 2019) with a table of events.

Datums	Pedzime	Vieta	Varikl informācija
9-11	Kristiņiem un 12. klasē skolēnu "Māra vilksnis" literāra izrāde skolā Rēzeknē	Pērnavē	2019.09.09-11
14-15	Erģu pārtikas speciālās sarīkošana "Māra"	Ziemeļu pierobežā Mārā	www.mara.lv/er
15	Poodi izrāde	Poodi ošmā	voigtamu.com
21	Sveicināta, Pērnavas vasara!	Pērnavē	voigtamu.com
21	Viesnīcā Saigānē	Kokneses jūrmalā	www.viesnibas.com/h/ita
21	Saigānē satikšanās ar Jūliju	Jūliju	www.viesnibas.com/h/ita
22	Pērnavas aprīļa mēnesa par godu izveidoti dienas	Pērnavē	www.zibala.lv
22	Līgo svētku sākums	Engurē	www.ingurimars.lv
23	Līgo svētku 11. novembra koncerts un Deģu balva	Rīgā	www.liveng.com/ly
23	Līgo svētku Melnās briedības svētki	Jūrmalā	www.vojtagmala.lv/it

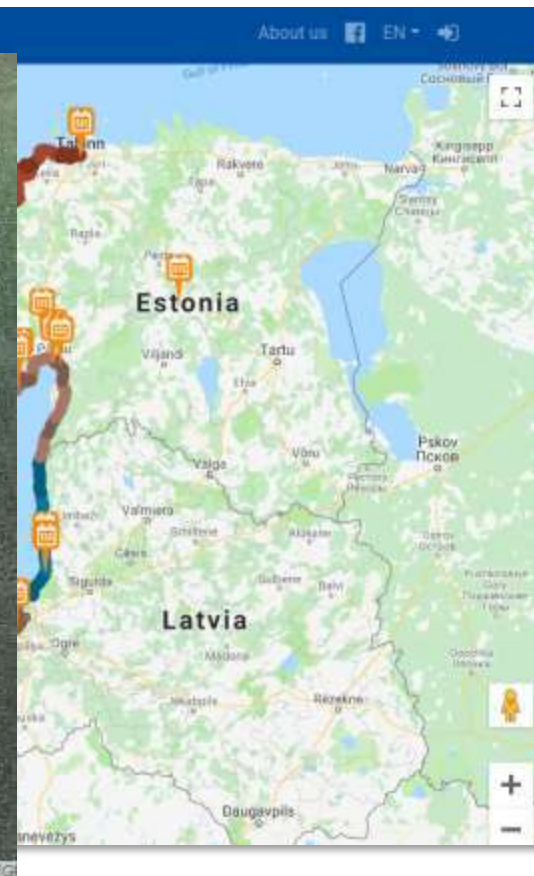
Open Street Map & Gogle maps use for coastalhiking.eu



Open Street



Google Maps



E9 on Wikipedia

E9 European long distance path

From Wikipedia, the free encyclopedia

The **E9 European long distance path**, **E9 path** or **European Coastal Path** (French: *Sentier Européen du Littoral*) is one of the European long-distance paths, running for 5,000 kilometres (3,100 mi) from Cabo de São Vicente in Portugal to Narva-Jõesuu in Estonia.

Contents [hide]

- 1 Portugal
- 2 Spain
- 3 France
- 4 England
- 5 Belgium
- 6 Netherlands
- 7 Germany
- 8 Poland
- 9 Latvia
- 10 Estonia
- 11 References
- 12 External links

E9



Length 5000 km (3107 mi)

Trailheads Cabo de São Vicente, Narva-Jõesuu

Use Hiking

Direct connection with the Coastalhiking.eu website

Hiking Waymarked Trails (Open Street Map data)

Waymarked Trails

-  hiking
-  cycling
-  mtb
-  riding
-  skating
-  slopes

Waymarked Trails: Hiking

Last update: 9/2/2019, 1:36:02 PM

Map data © OpenStreetMap under ODbL elevation



relation 1254604

E9 European walking route E9

[Show on map](#) [GPX](#) [KML](#)

Cabo de São Vicente (PT) - West Coast of Spain - Le Havre (FR) - Calais (FR) - Bruges (BE) - Rotterdam (NL) - Hamburg (DE) - Stralsund (DE) - Gdańsk (PL) - border PL/RU - Narva-Jõesuu (EE)

Mapped length: 6365 km
Official length: 5200 km
Operator: European Ramblers Association

[Wikipedia](#)

[Elevation profile](#)

Sections

- European long distance path E9 - part alternative Great Bri...
- European long distance path E9 - part Belgium
- Europese wandelroute E9, België
- European long distance path E9 - part Estonia
- Euroopa matkarada E9, Eesti
- European long distance path E9 - part France
- Chemin de randonnée Européen E9, France
- European long distance path E9 - part Germany
- European long distance path E9 / International coastal route - part Germany
- European long distance path E9 - part Latvia
- Euroopa Jürtaka E9, Latvia
- European long distance path E9 - part Poland
- European long distance path E9 - part Spain
- European walking route E9 - Nederland
- Europese wandelroute E9, Nederland

OpenStreetMap tags

contact:website	http://www.era-ewv-ferp.com/index.php?topmenu_id
description	Cabo de São Vicente (PT) - West Coast of Spain - Le Havre (FR) - Calais (FR) - Bruges (BE) - Rotterdam (NL) - Hamburg (DE) - Stralsund (DE) - Gdańsk (PL) - border PL/RU - Narva-Jõesuu (EE)
distance	5200
name	Chemin de randonnée Européen E9

How is the Baltic Coastal Hiking trail:



Social



Tasty



BALTIC
COASTAL
HIKING



Rough



Romantic



Surprising



BALTIC
COASTAL
HIKING



Mysterious



Versatile



Emotional



Pet and kids friendly





celotajs.lv



Asnāte Ziemele
Ph. +371 29285756
asnate@celotajs.lv

Latvian rural tourism association "Lauku ceļotājs"

Kalnciema iela 40, Rīga, LV-1046, +371 67617600

Email: lauku@celotajs.lv Facebook: Lauku Celotajs Twitter.com/Laukucelotajs