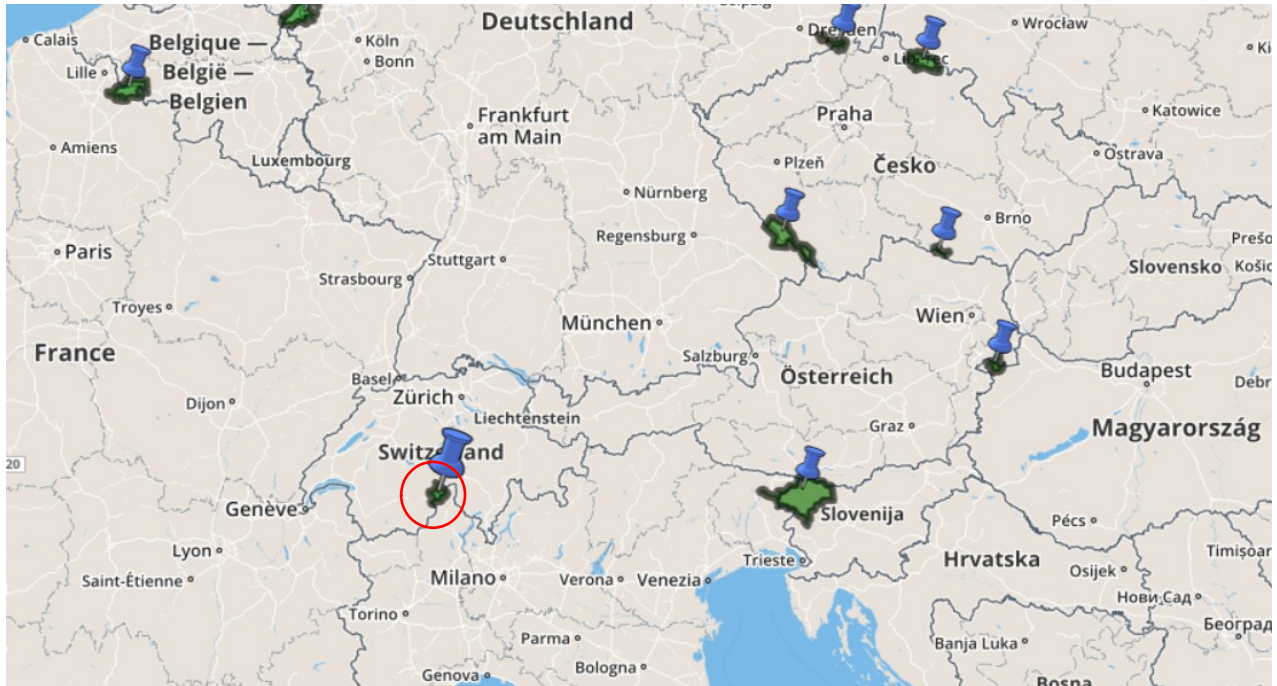


Practical Information (Travel)

Localisation

The two Nature Parks Binnal and Alpe Veglia-Devero are located in the border area of the Italian Region of Piemonte and the Swiss Canton of Wallis/Valais. The nearest big city is Milan/Italy.



We have two venues for the meeting:

- Tuesday, 23rd – Thursday, 25th: **Binn** in Switzerland
- Thursday, 25th to Friday, 26th: **Alpe Devero** in Italy

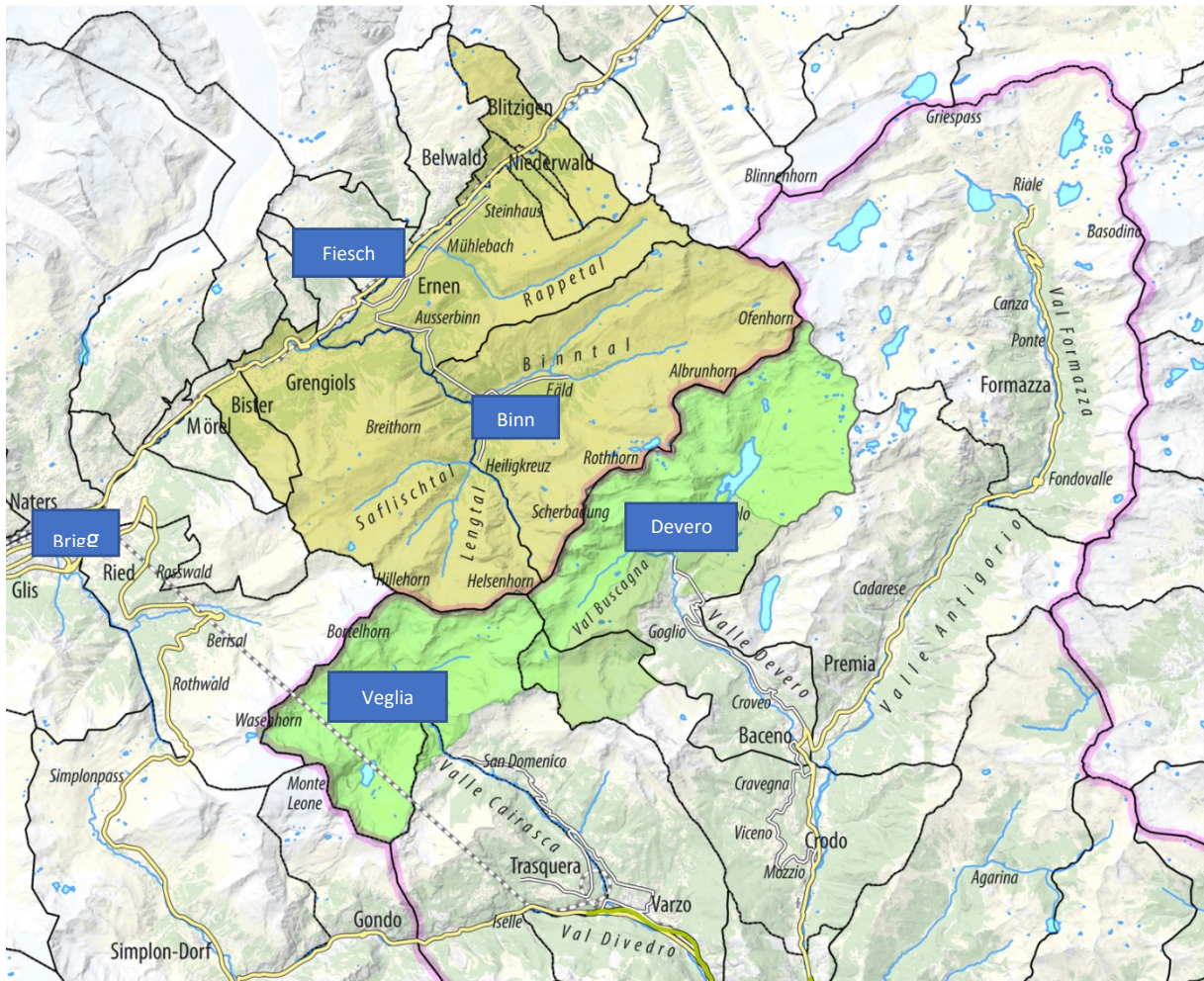
Travelling time

from Milan to Binn: 3.5 hours (arrival)

from Binn to Alpe Devero: 3 hours (transfer by car or by public transport).

from Devero to Milan: 2.5 hours (departure)

from Varzo to Milan: 1.5 hours (post-meeting trip)



Domodossola

Travelling to Binn in Switzerland

By train and bus

From North, East, South and West:

- Trains arrive at the international railway station of **Brig**
- Train to **Fiesch** (Matterhorn Gotthard Bahn, 35 minutes)
- Bus to **Binn Dorf** (Postbus, 30 minutes)

Timetable Train/Bus: <https://www.sbb.ch/en/home.html>

By car

There are shuttle trains for cars through the railway tunnels of **Simplon/Sempione** (south), **Furka** (east) or **Lötschberg** (north) arriving at the Upper Valais/Wallis

Route planner: <https://www.viamichelin.com/>

By aeroplane

The nearest international airport is **Milan Malpensa** in Italy. From there, busses are going to **Domodossola**, connection to **Brig** by train, connection to **Fiesch** by train and a few busses from Fiesch to **Binn Dorf**.

➔ **Travel-Time Milan-Malpensa/Italy to Binn/Switzerland: 3 hours**

Time table: Malpensa - Domodossola (Comazzibus)

Malpensa T1	7.20	10.00	11.00	13.00	14.50
Malpensa T2	7.25	10.05	11.05	13.05	14.55
Domodossola Railway Station	8.40	11.25	12.25	14.25	16.15

* If you arrive later, let us know and we will find a travel solution.

In any case we have to reserve the Comazzibus from Milan to Domodossola.

Time table: Domodossola - Brig (Train)

Domodossola	8.48	11.48	12.48	14.48	16.48
Brig	9.16	12.16	13.16	15.16	17.16

There is a train every hour.

Time table Brig - Fiesch: (Train, Matterhorn Gotthard Bahn MGB)

Brig	9.23/9.48	12.23/12.48	13.23/13.48?	15.23/15.48	17.23/17.48
Fiesch	9.55/10.22	12.55/13.22	13.55/14.22	15.55/16.22	17.55/18.22?

There are 2 trains every hour.

Time table: Fiesch – Binn (Postbus)

Fiesch	11.48	14.08	15.08/15.58		17.58
Binn	12.19	14.33	15.33/16.23		18.23

DEPARTURE Travelling from Devero in Italy

By train and bus

Departure from Alpe Devero at 8.30

Arrival at Varzo, railway station 9.30

Departure 10.08 to the international railway station Brig/Switzerland;

Arrival at Brig at 10.33 -> trains to Zurich – Basel – Ginevra (Germany/France)

Post-Meeting Trip:

Transfer from Alpe Veglia to Varzo railway station;

Departure 16.08 to the international railway station Brig/Switzerland

Arrival at Brig at 16.33 -> trains to Zurich – Basel – Ginevra (Germany/France)

TransParcNet Meeting from Tuesday 23rd to Friday 26th June in Binntal-Veglia-Devero (Switzerland/Italy)

By car

Travelling time from Alpe Devero to Milano Malpensa: 2 hours
arrival at 10.30

Travelling time from Alpe Devero to Brig: 2 hours
arrival at 10.30

Post-Meeting Trip:

*Travelling time from Varzo/Italy to Milano-Malpensa: 1.5 hours
arrival at 17.30*

*Travelling from Varzo to Brig: 1 hour
arrival at 17.00*

By aeroplane

arrival by car from Devero at 10.30

arrival by car from Varzo at Milano Malpensa 17.00

Contact

If you have any questions concerning the organisation of your travel, please contact
Elena Macherhammer of Binntal nature park
elena.macherhammer@landschadschaftspark-binntal.ch,
phone +41 971 50 51