

Towards the implementation of the EU BD Strategy for 2030

A perspective from a National Park

Daniela Gentile

Scientific Department Abruzzo Lazio and Molise NP

What's interesting in our experience?

One of the oldest PA in Europe

PA in highly human-dominated landscape

5 Natura 2000 sites

22 habitats and in 81 species in habitats directive

Enlargement of the PA over years

Policy on strict protection

Tourism management

.



All kinds of
stakeholders:
breeders, farmers,
hunters, local
institutions,
tourist agencies etc.

Without the
involvement of
each of them
no conservation action
is effective



ENLARGEMENT OF THE BOUNDARIES

From 18.000 ha to 50.000 ha +

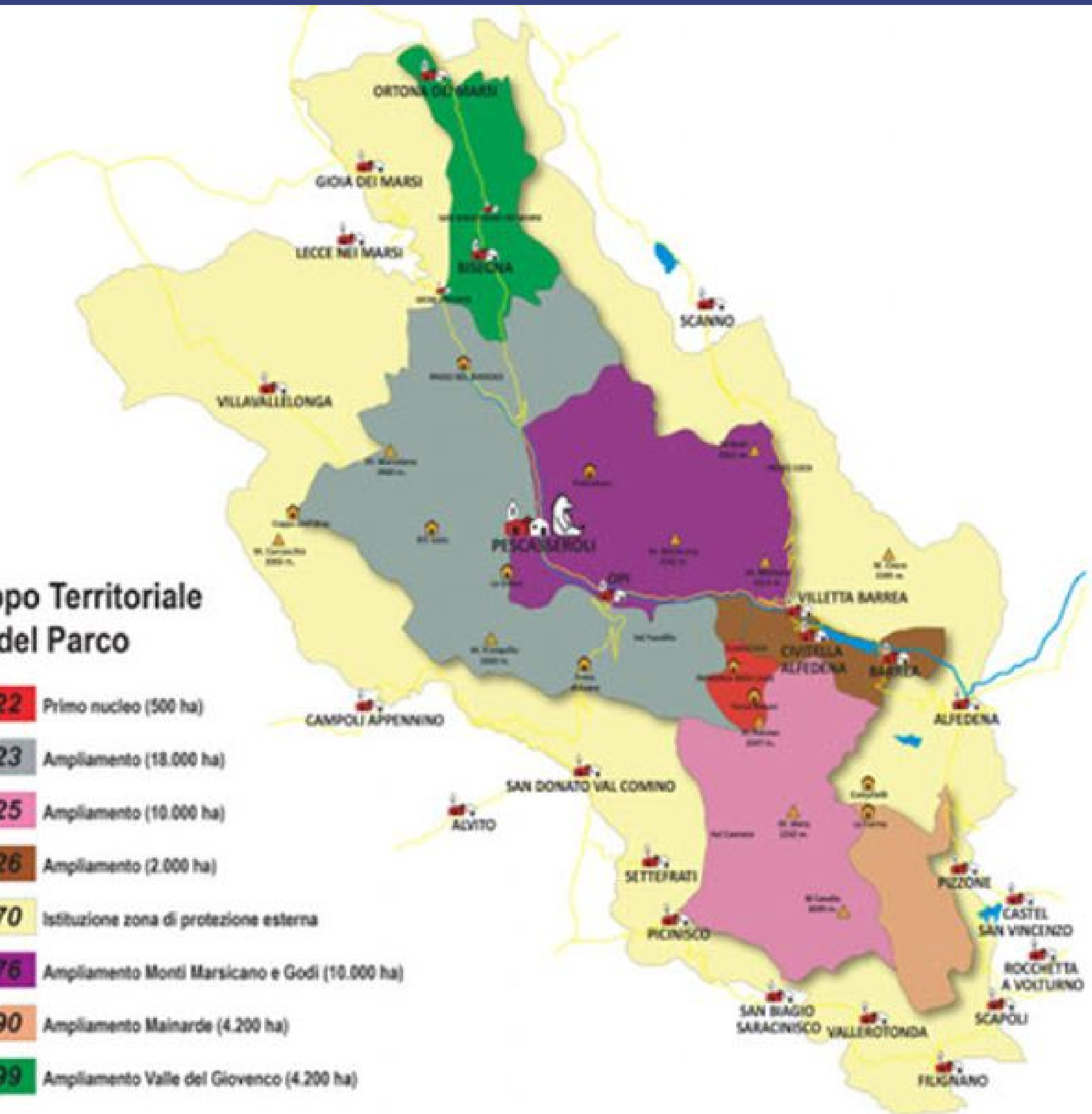
Buffer area: 80.000 ha

IT WASN'T EASY!

- Easier when the request came from the bottom
- Easier when no major economic interests were at stake (e.g. ski shore; usually more marginal areas)
- 25 years to define the buffer area
- Essential is to start participatory processes since the very beginning
- Effective participatory processes are accomplished only with clear and complete guidelines and well trained professionals

Sviluppo Territoriale del Parco

1922	Primo nucleo (500 ha)
1923	Ampliamento (18.000 ha)
1925	Ampliamento (10.000 ha)
1926	Ampliamento (2.000 ha)
1970	Istituzione zona di protezione esterna
1976	Ampliamento Monti Marsicano e Godi (10.000 ha)
1990	Ampliamento Mainarde (4.200 ha)
1999	Ampliamento Valle del Giovenco (4.200 ha)

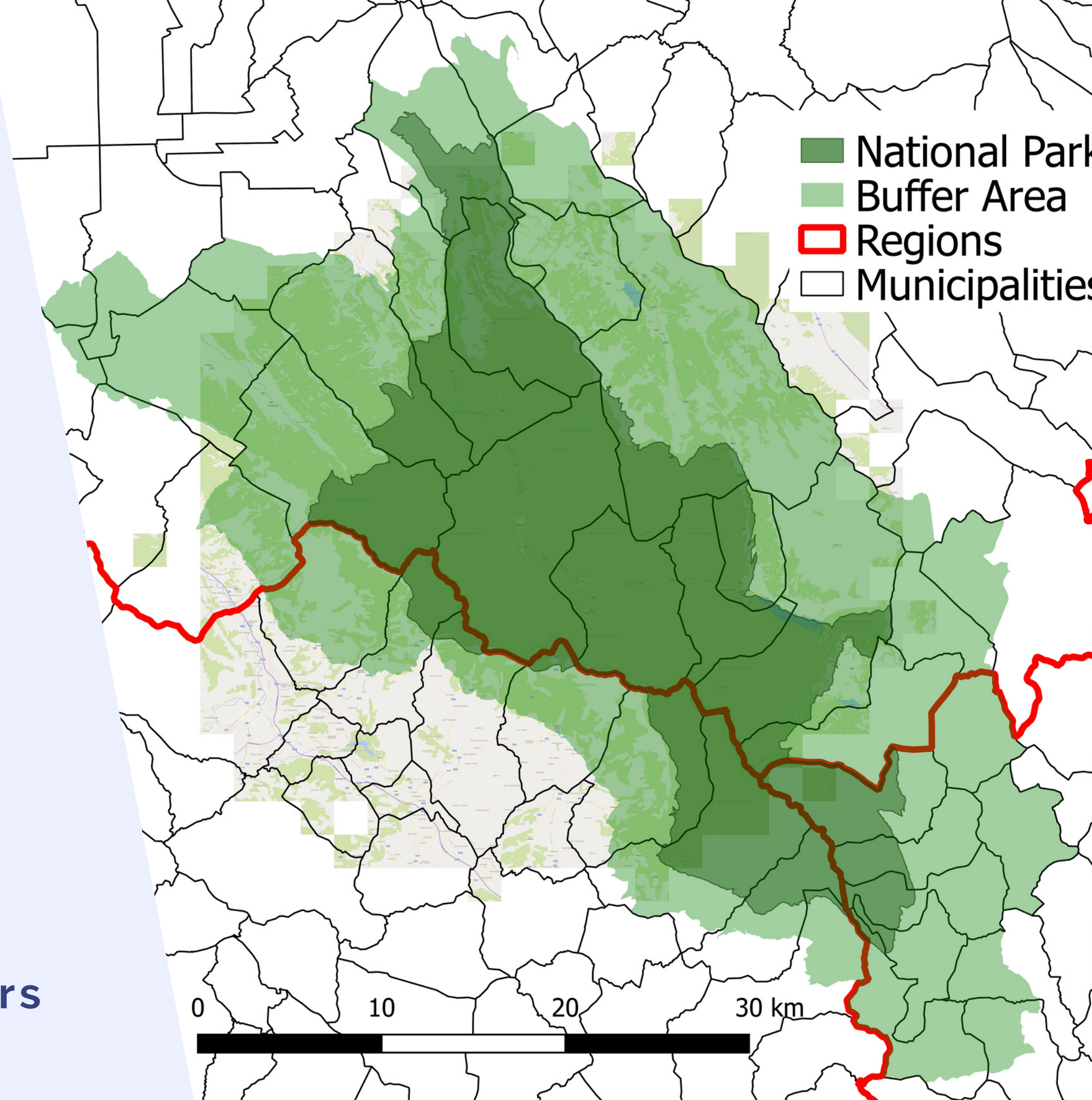


ADMINISTRATIVE FRAGMENTATION

PROBABLY THE BIGGEST DIFFICULTY WE FACED

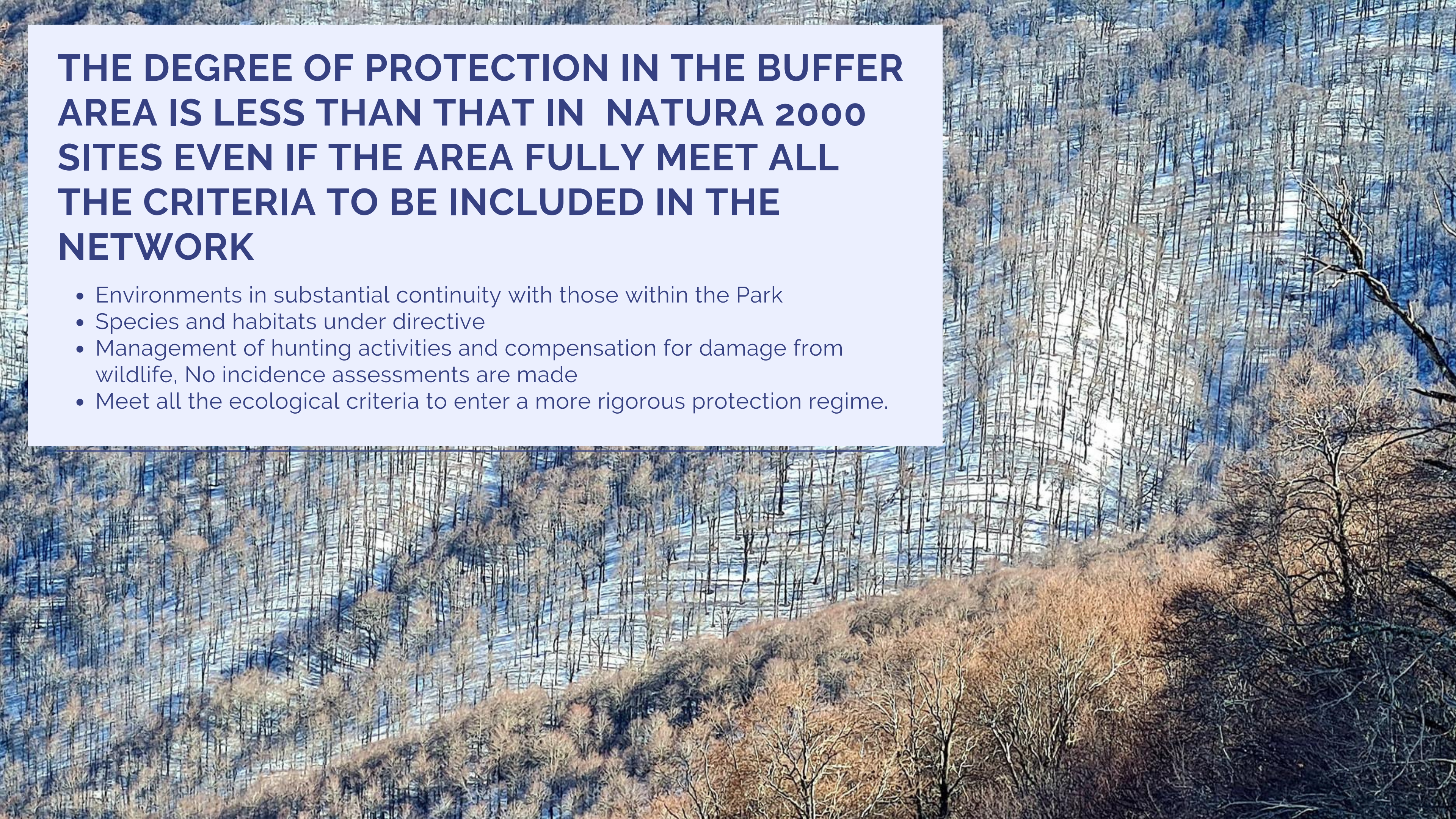
- 3 different Region administered in different ways
- More than 24 municipalities

It makes participatory processes particularly difficult and it's something to take seriously into account in contexts similar to ours

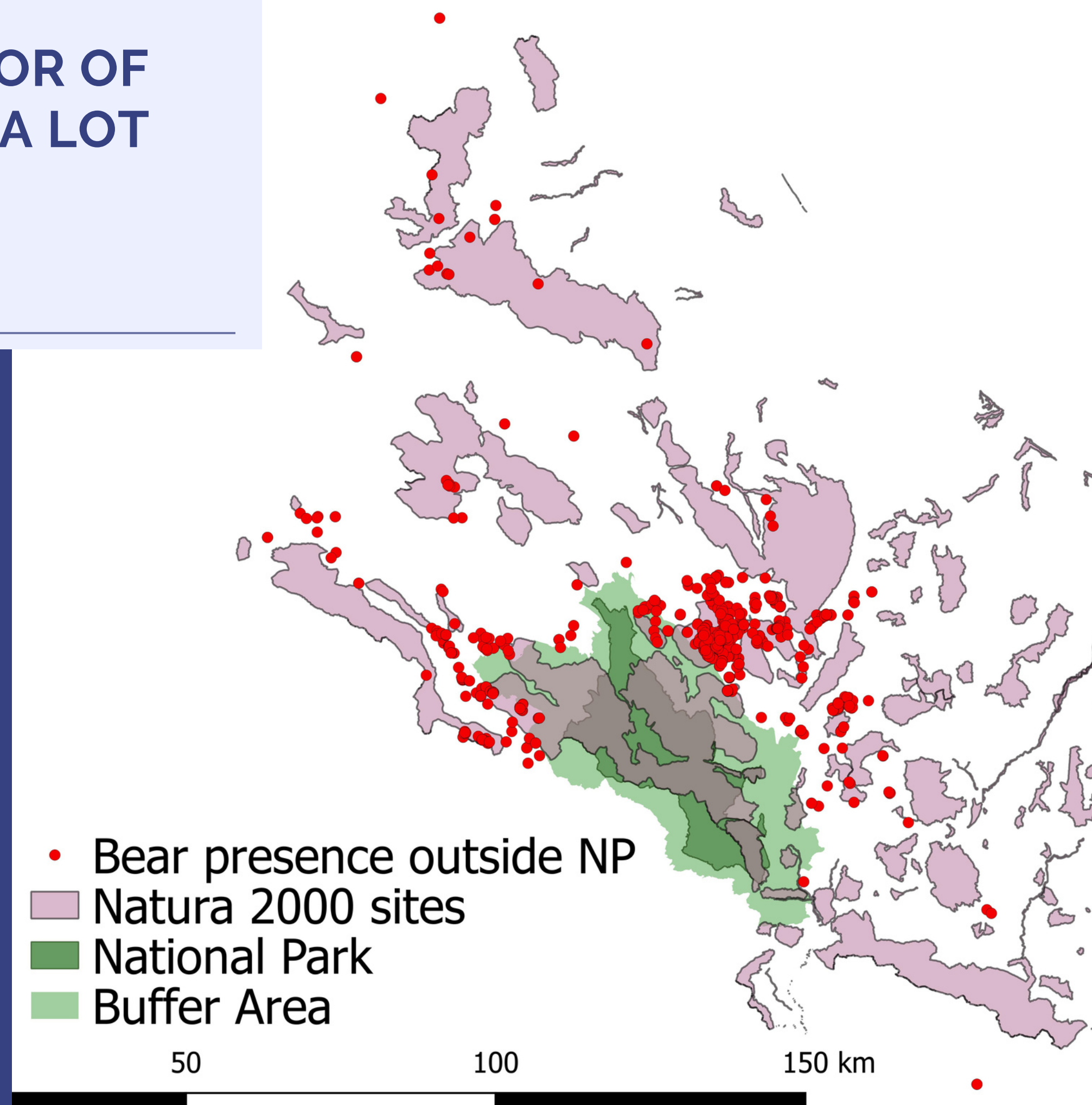


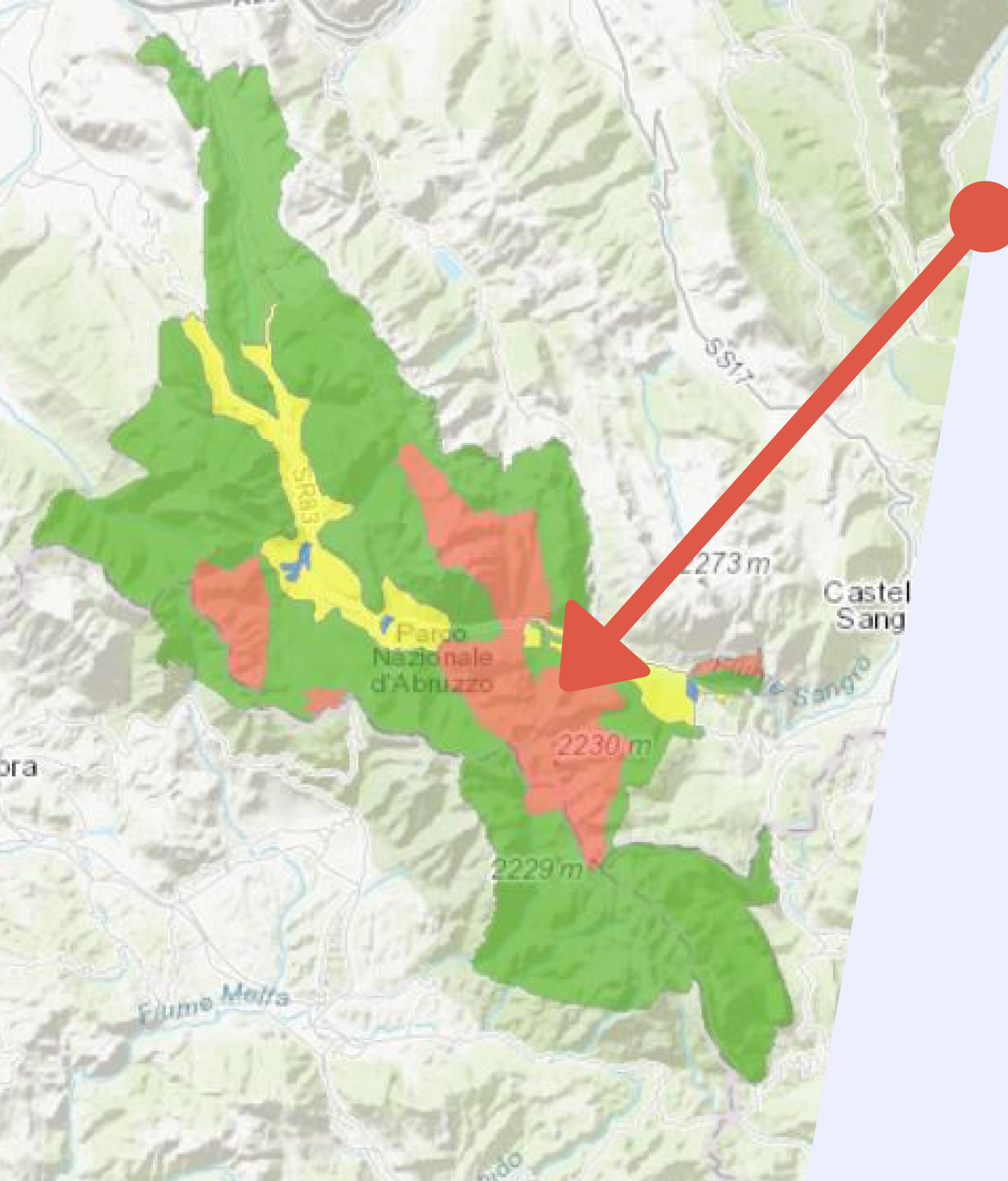
THE DEGREE OF PROTECTION IN THE BUFFER AREA IS LESS THAN THAT IN NATURA 2000 SITES EVEN IF THE AREA FULLY MEET ALL THE CRITERIA TO BE INCLUDED IN THE NETWORK

- Environments in substantial continuity with those within the Park
- Species and habitats under directive
- Management of hunting activities and compensation for damage from wildlife, No incidence assessments are made
- Meet all the ecological criteria to enter a more rigorous protection regime.



MONITORING THE SPATIAL BEHAVIOR OF APENNINE BROWN BEARS HELPED A LOT TO IDENTIFY IMPORTANT AREAS WHICH ARE NOT PROTECTED





STRICT PROTECTION

OUR CONTEXT

8000 ha under strict protection
5 old growth forests (UNESCO).

OUR STRATEGY

Every year we pay a rent to the municipalities
in which these areas fall

**EVEN IF CONTROVERSIAL, IN OUR CASE THIS
STRATEGY CAN BE CONSIDERED SUCCESSFUL SINCE IT
HAS SIGNIFICANTLY REDUCED CONFLICTS AND
DIFFICULTIES**

AN IMPORTANT ASPECT OF MANAGEMENT

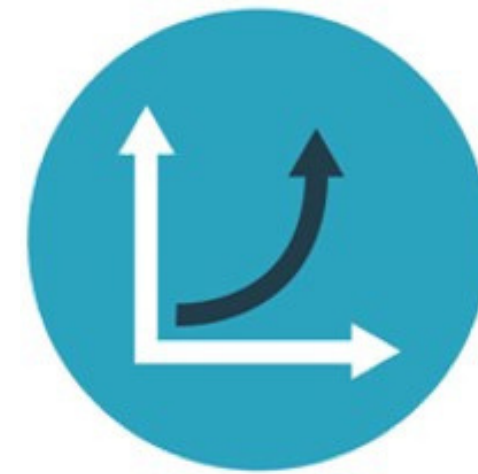
SUSTAINABLE TOURISM



Tourism is the fastest growing industry in the world.



Tourism sector that is growing fastest is ecotourism.



Visits to PA have grown exponentially in recent years



Need to manage it!
Establish clear objectives and guidelines to ensure that tourism is truly sustainable



THANKS FOR YOUR ATTENTION

CONTACT INFO

EMAIL ADDRESS

info@parcoabruzzo.it

danielagentile8@yahoo.it

WEB

www.parcoabruzzo.it