

# Adapting to Climate Change

---



LIFE  
**NATUR'**  
**ADAPT**



# LIFE NATUR'ADAPT intro

---

## Project goal

Support a majority of protected area managers to adopt new adaptive planning and governance tools accounting for Climate Change.

## Timeline

**5 years** (2018-2023), it is coordinated by Réserves Naturelles de France and is based on a collective involving nine other partners, around three axes.

## Budget

**€4.2 million**, including **€2.5 million** from the European Commission via the LIFE Climate programme, €500,000 from the Ministry of Ecological Transition and **€500,000** from the French Office for Biodiversity.

## Funders

LIFE Programme, Ministry of Ecological Transition, French Office for Biodiversity, Capellino Foundation



# LIFE NATUR'ADAPT intro

## Project Objectives

1.

To develop the **methods, tools and services** that will enable managers to **perform climate change vulnerability assessment and develop adaptation plans** for natural protected areas

2.

To facilitate the **access to operational knowledge** on adaptation that responds cost-effectively to the effects of climate change

3.

To support the **emergence of a community of practitioners that will share and collaborate on innovations**

4.

To raise awareness **among all actors** of biodiversity development and land use planning on the effects of climate change on the management of nature protected sites.



# LIFE NATUR'ADAPT intro

## How do we achieve this?

The project ran over 5 years and was structured around 4 main steps:

1.

**Run an in-depth survey** (online and offline) in France and in Europe to better understand the problematics of climate change in Protected Areas and the adoption of adaptive management strategies as well as the needs of PA managers

2.

**Create a community of experts** to co-develop methods, services and tools;

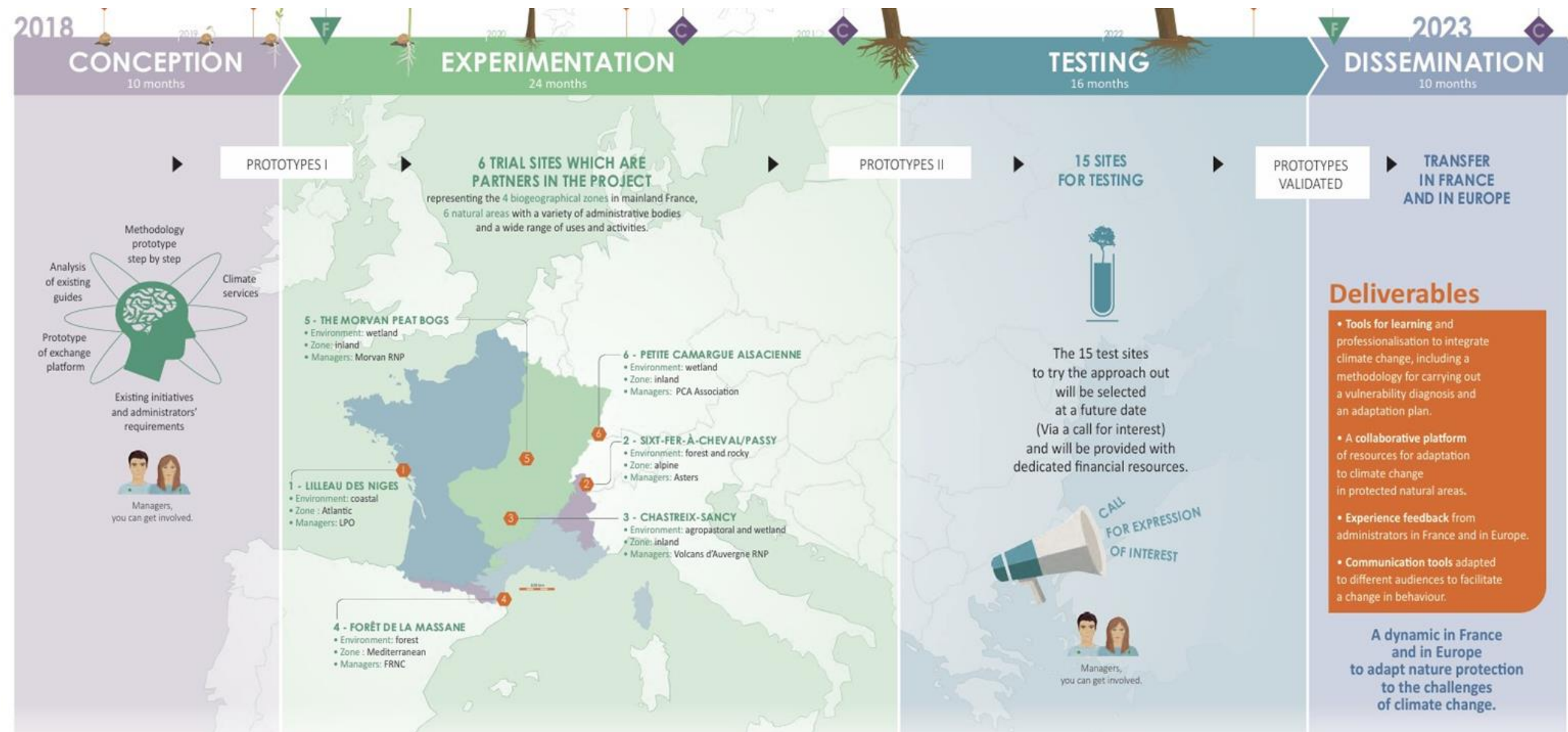
3.

**Implement and test the prototypes** in the field: 6 pilot sites to start with and 15 mirror sites for further testing;

4.

**Support dissemination and knowledge transfer** through the creation of Massive Online Open Courses as well as a toolkit for PA Managers.





Source: [naturadapt.com/groups/communaute/documents/776/get](https://naturadapt.com/groups/communaute/documents/776/get)

# Useful Post-project Programmes

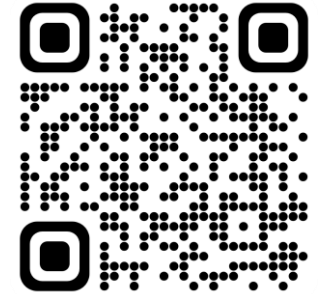


Community

**1400**  
members

Created for PA managers and climate change specialists involved in the PA work, to move forward collectively through the exchange of news, information, feedback but also questions

You can also register: [Log in | LIFE Natur'Adapt \(naturadapt.com\)](https://naturadapt.com)



Resources

Among which:

- ▲ Methodological guide to adapting to climate change [get \(naturadapt.com\)](https://naturadapt.com)
- ▲ Climate change adaptation approaches of the 6 Natur'Adapt experimental sites and 15 Natur'Adapt test sites
- ▲ Climate change adaptation measures (incl. practical questionnaires)

The methodological guide for adaptation to climate change Natur'Adapt'' //

**THE NATUR'ADAPT GUIDE [FR] and [EN]**

**Factsheet n°1** - Exploring the 4 components [FR] and [EN]

**Factsheet n°2** - From information to mobilization [FR] and [EN]

**Factsheet n°3** - Information to collect and possible sources by component [FR]

**Factsheet n°4** - Some useful climate indicators for climate analysis and where to find them [EN]

**Factsheet n°5** - Analysis of the potential effects of climate change ('simple analysis') [FR] and [EN]

**Factsheet n°6** - Analysis of vulnerabilities and opportunities ('detailed analysis') [FR] and [EN]

**Factsheet n°7** - Recommended content for the vulnerability and opportunity diagnosis [FR] and [EN]

**Factsheet n°8** - Examples of adaptation measures [FR] and [EN]

# Large-scale Nature Restoration

[Large-scale nature restoration, a solution to tackle climate change? - A conversation with Jeremy Roberts - EUROPARC Federation](#)



- ▶ What is Cairngorm Connect and what is their goal?
- ▶ Nature restoration projects - scale and timelines
- ▶ Do you take into account climate change?
- ▶ Key planned actions: focusing on woodlands, peatlands, river and floodplain restoration.
- ▶ Why is deer management so important?
- ▶ How are the project partners organised to ensure effective governance?
- ▶ How do they involve local communities?
- ▶ Big scale = better adaptation and resilience to climate change
- ▶ How partnership of 4 land managers developed a 200-year restoration vision? They collaboratively restore forests, peatlands, rivers and floodplains over 600 km<sup>2</sup> in the heart of Scotland.



# Large-scale Nature Restoration

---

Q&A

**Jeremy Roberts**  
Cairngorm Connect





# THANK YOU

---

Any questions, please contact: Platform Support: [support@naturadapt.com](mailto:support@naturadapt.com) project team: [naturadapt-rnf@espaces-naturels.fr](mailto:naturadapt-rnf@espaces-naturels.fr) To be coordinated to the correct team: Nella Sergejeva [nella.sergejeva@europarc.org](mailto:nella.sergejeva@europarc.org)

