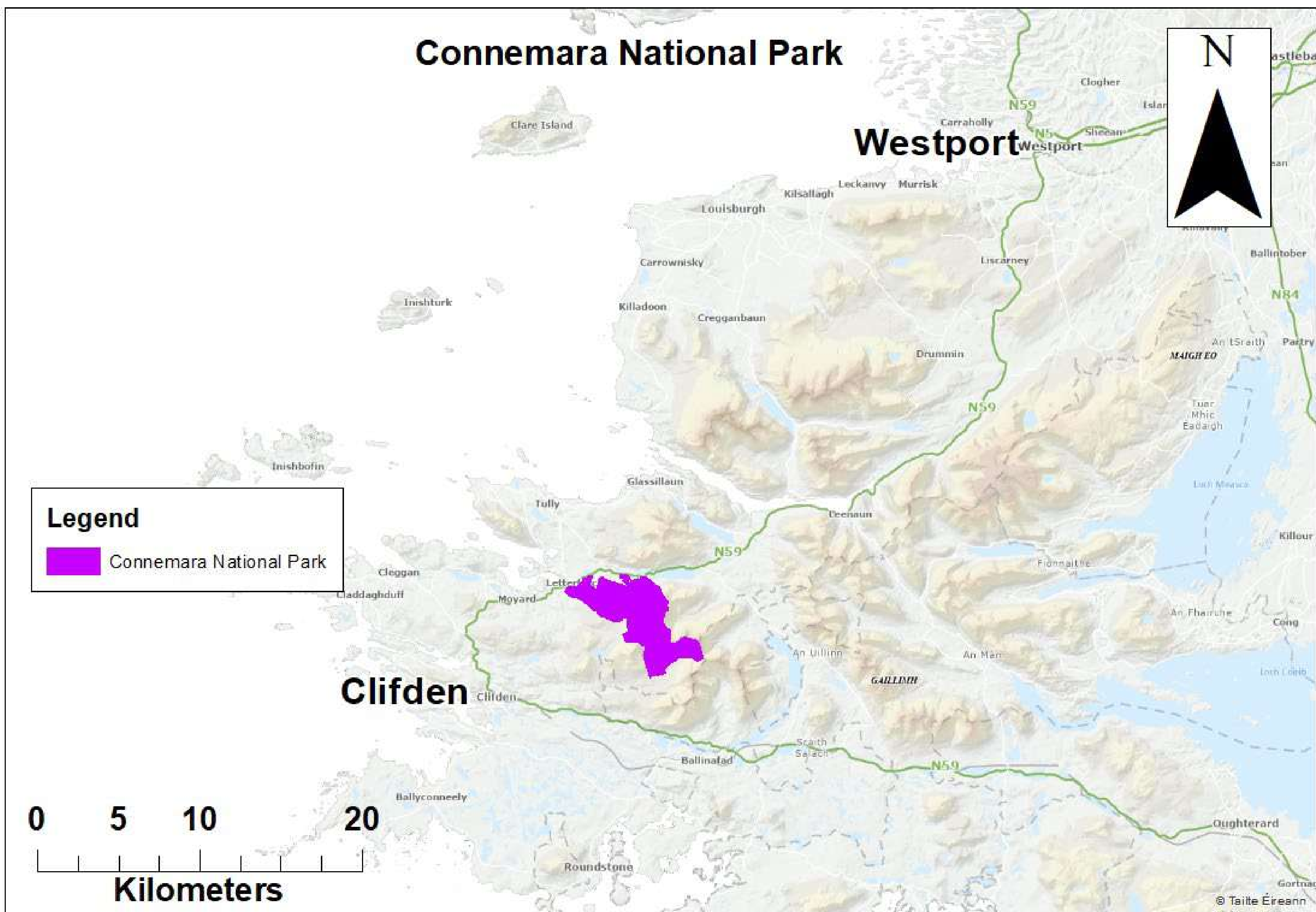




NPWS

An tSeirbhís Páirceanna
Náisiúnta agus Fiadhúlra
National Parks and Wildlife
Service

Introduction to Connemara National Park





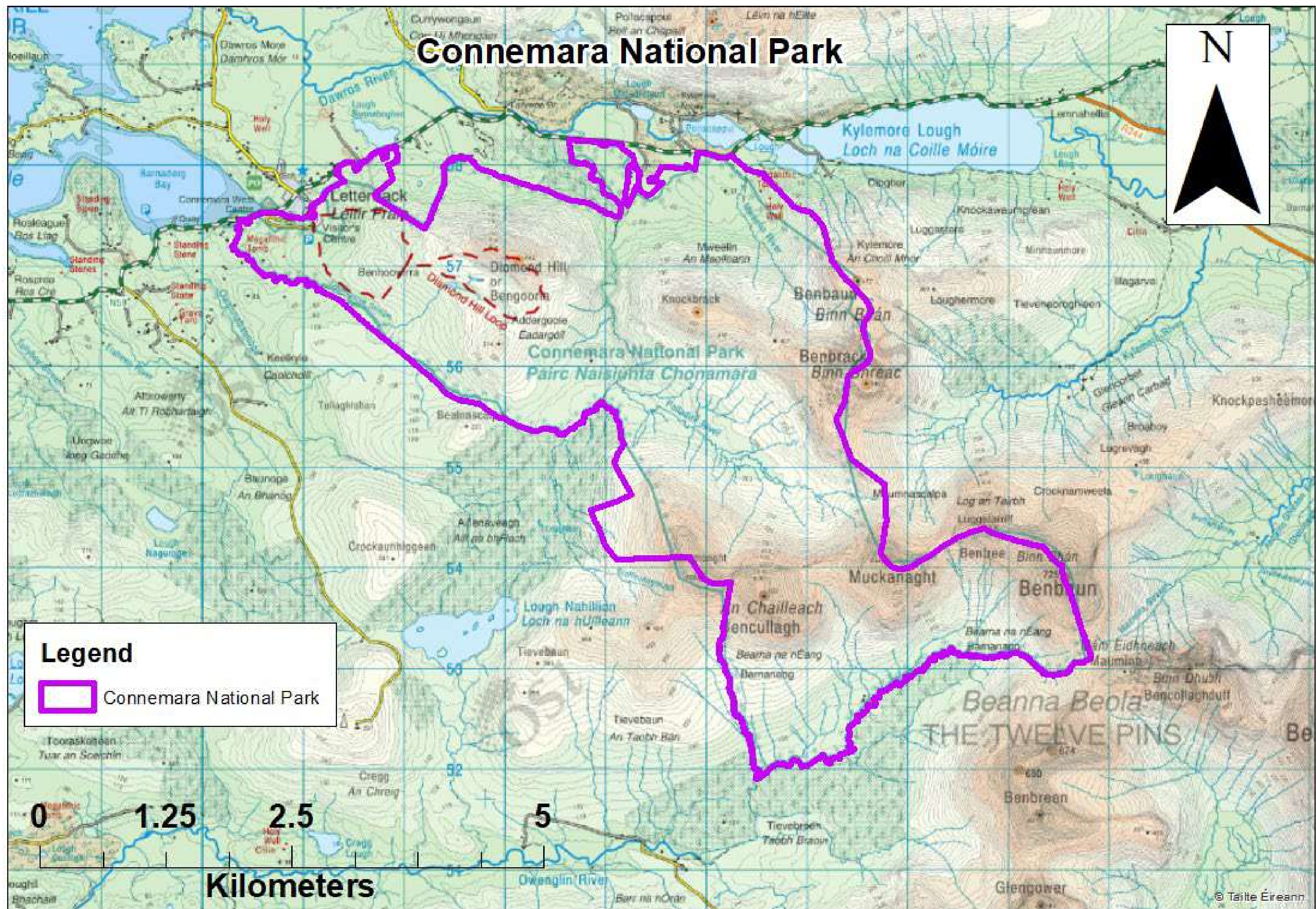
NPWS

An tSeirbhís Páirceanna
Náisiúnta agus Fiadhúlra
National Parks and Wildlife
Service

- Opened in 1980
- 300,000 visitors per annum
- 2,297 ha in size
- 18 staff
- IUCN Category II
- Scenic mountains, expanses of blanket bog, heaths, grasslands, rivers and woodlands
- Part of the Twelve Bens/Garraun Special Area of Conservation



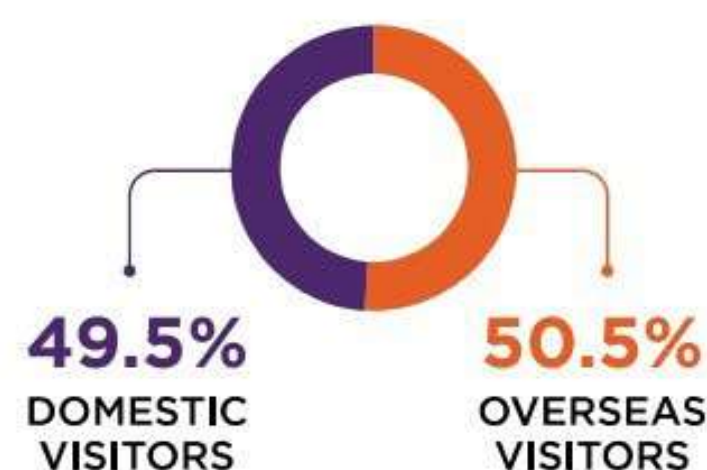
Connemara National Park





OVERALL VISITOR PROFILE

Visitor Origin



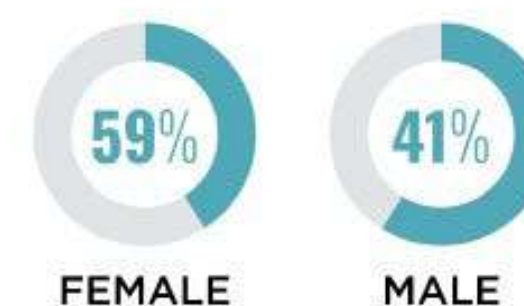
Age Profile



Group Composition



Gender



Overseas Visitors





NPWS

An tSeirbhís Páirceanna
Náisiúnta agus Fiadhúlra
National Parks and Wildlife
Service

Visitor Experiences

- Exhibition in the visitor centre
- Audio Visual show
- Connemara ponies
- Picnic areas
- Children's playground
- Café
- Nature trails including the 6.5 km iconic Diamond Hill Walk that brings visitors to the 442 m summit of Diamond Hill

Treoir Conaire Pháirc Náisiúnta Chonamara

Connemara National Park Trail Guide

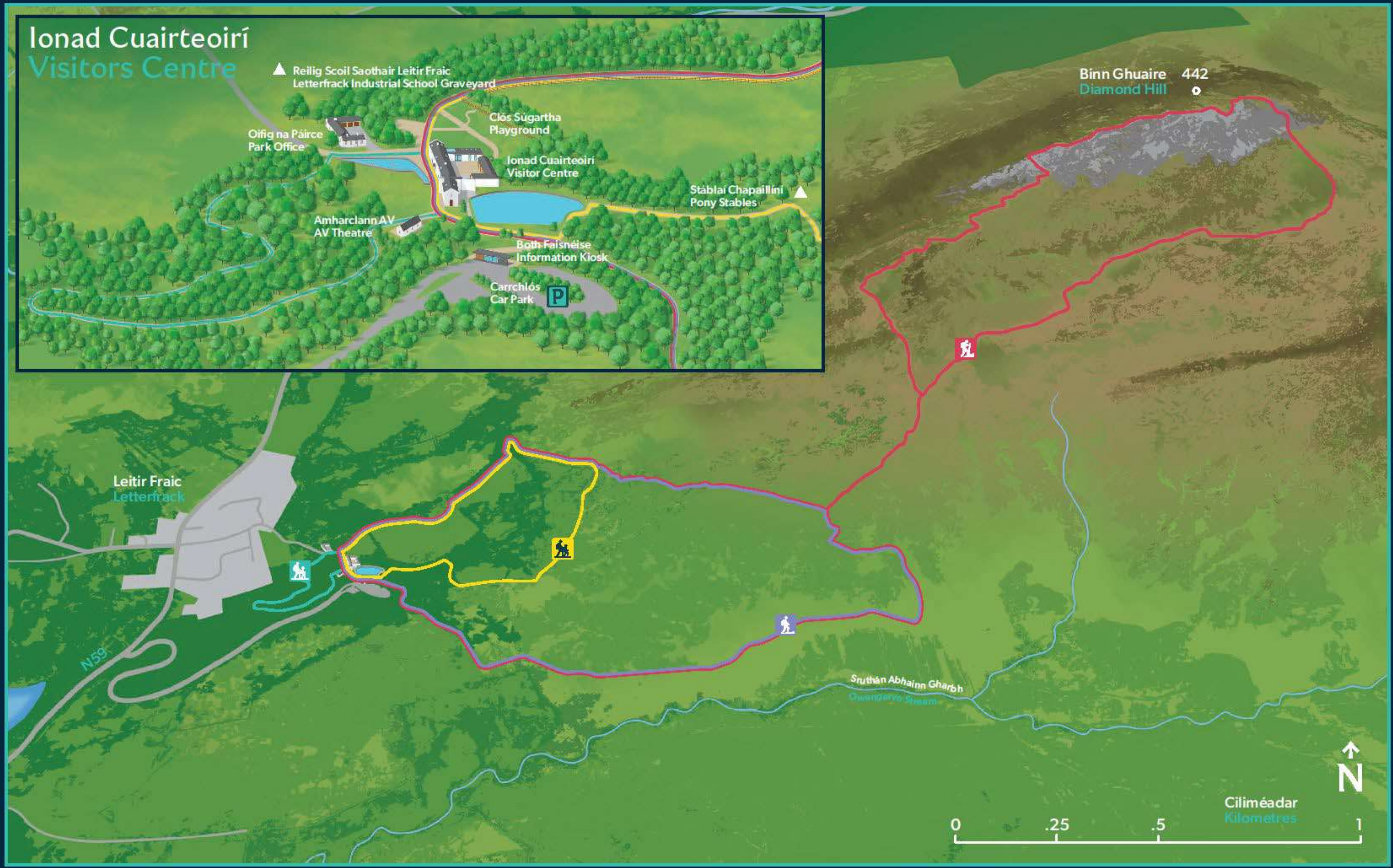


Treoir maidir le Cosáin

Trail Guide

	Cosán an tStráidín Shúil Easca Strathbeg Trail Easy	~1.5 km ~30 nóim./min ~40 m ~10 mílte/loop
	Cosán Dóirí Chóill Éilís Easca Éilís Wood Mature Trail Easy	~500 m ~15 nóim./min ~20 m ~1 mílte/loop
	Cosán Éilís Ghuaire Uachtarach Dian Upper Diamond Hill Walk Strenuous	~6.7 km ~2 uile/hr 30 nóim./min ~350 m ~1 mílte/loop
	Cosán Éilís Ghuaire Iochtaraigh Measúrtha Lower Diamond Hill Walk Moderate	~3 km ~1 uile/hr ~60 m ~1 mílte/loop

Glaoigh ar 800 nó 112 i gcás áisce náisiúnta
Call 800 or 112 in case of emergency





NPWS









NPWS

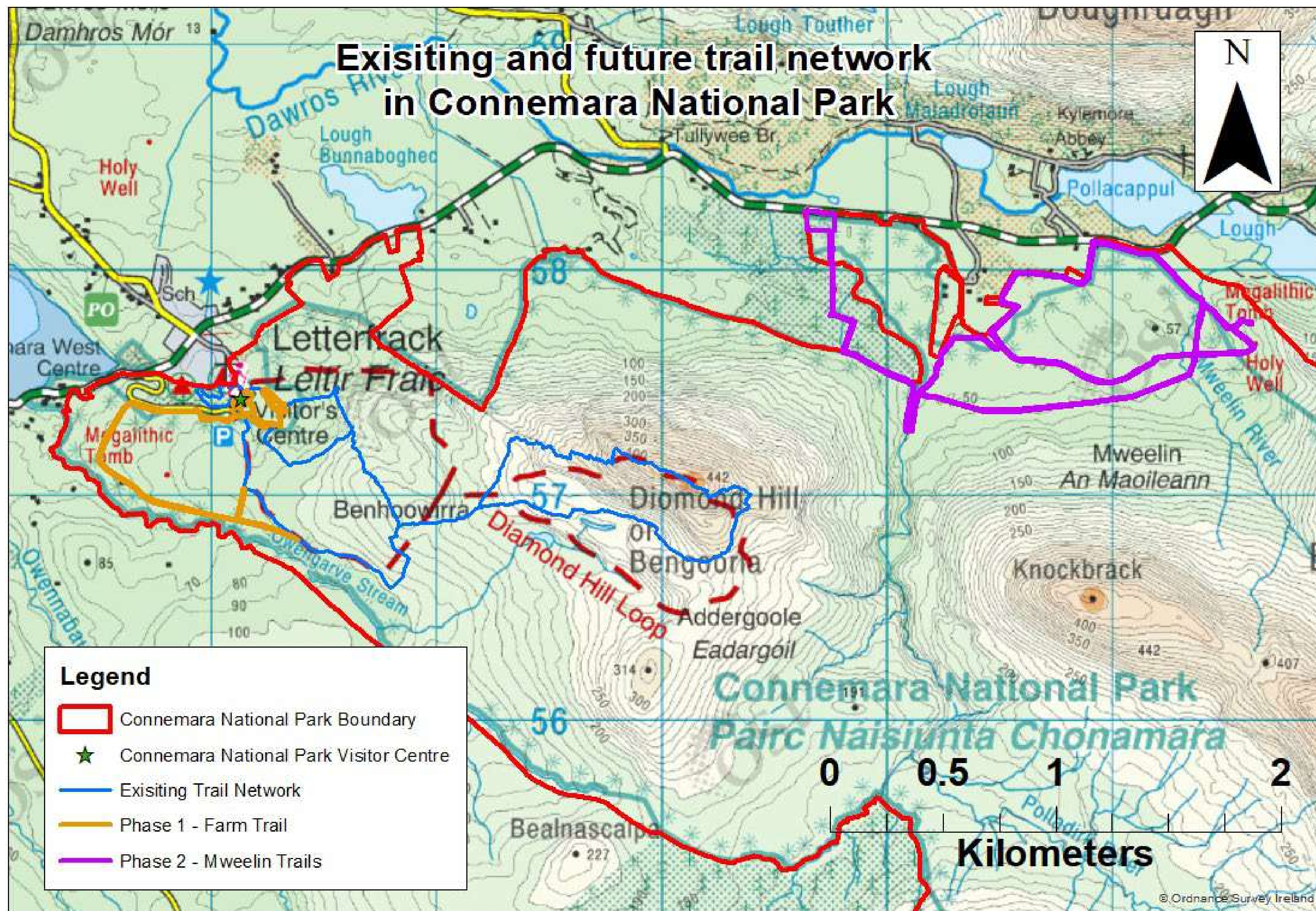
An tSeirbhís Páirceanna
Náisiúnta agus Fiadhúlra
National Parks and Wildlife
Service

Future developments related to visitor experience



N

Existing and future trail network in Connemara National Park





NPWS

An tSeirbhís Páirceanna
Náisiúnta agus Fiadhúlra
National Parks and Wildlife
Service

Development of a new/upgraded Visitor Centre and facilities at Connemara National Park?





NPWS

An tSeirbhís Páirceanna
Náisiúnta agus Fiadhúlra
National Parks and Wildlife
Service

Workshops

- Overtourism – How to better manage the flows of people?
- Indicators – How to measure the impact of tourism on biodiversity?
- Meaningful visits – How to make visits unforgettable?
- Cooperation between the Tourism Board and Protected Areas – What actions can be undertaken to foster it?
- Trails – How to manage them in a sustainable way?



NPWS

An tSeirbhís Páirceanna
Náisiúnta agus Fiadhúlra
National Parks and Wildlife
Service

Thank you

eugene.finnerty@npws.gov.ie