



27.05.2026

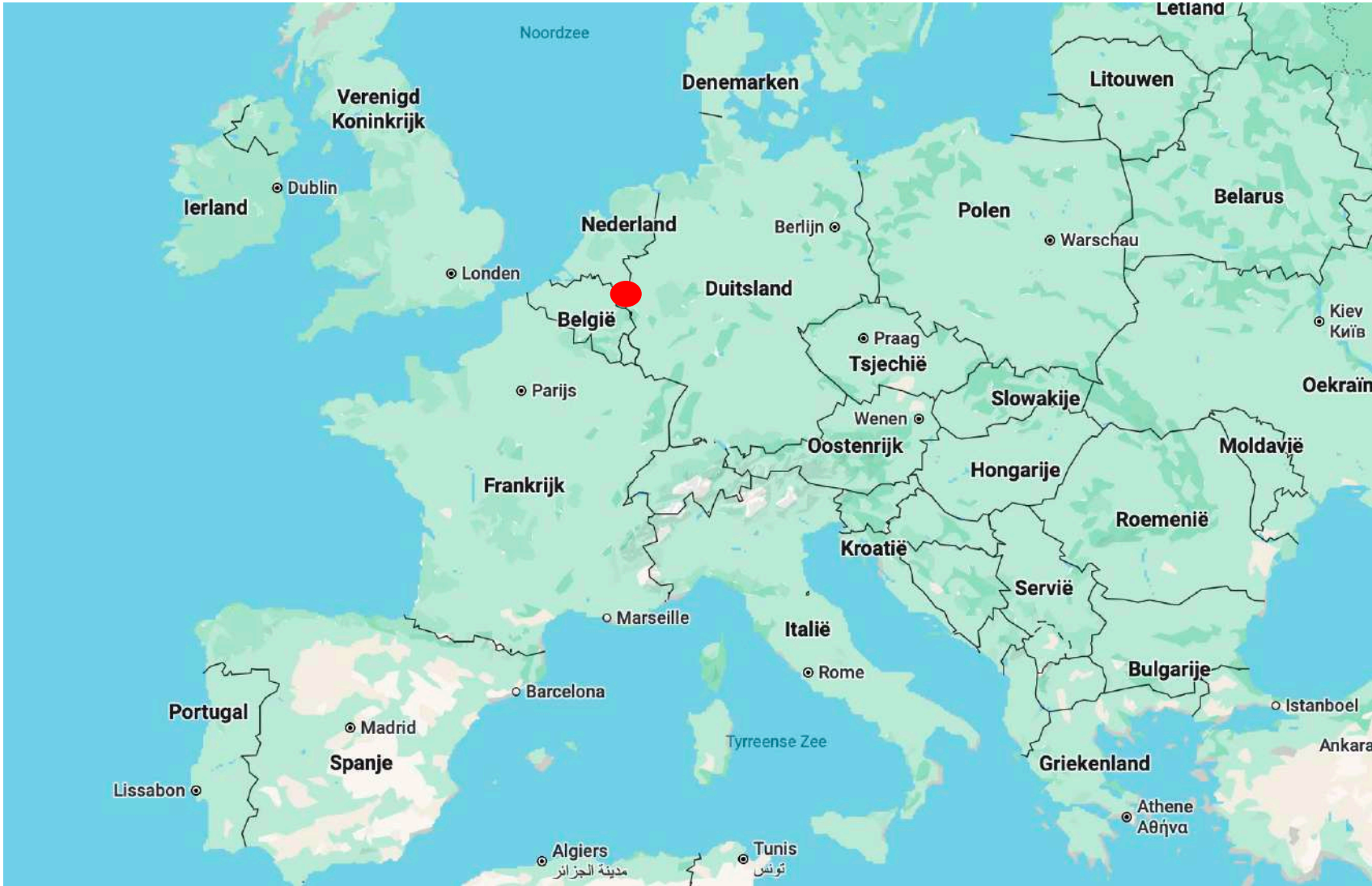


Photo: Google Maps, may 20, 2026

Cross border park Maas-Swalm-Nette

1000 km²



Maas-Swalm-Nette



- Support DE-NL cooperation
 - Nature
 - Landcape
 - Cultural History
 - Recreation

Maas-Swalm-Nette

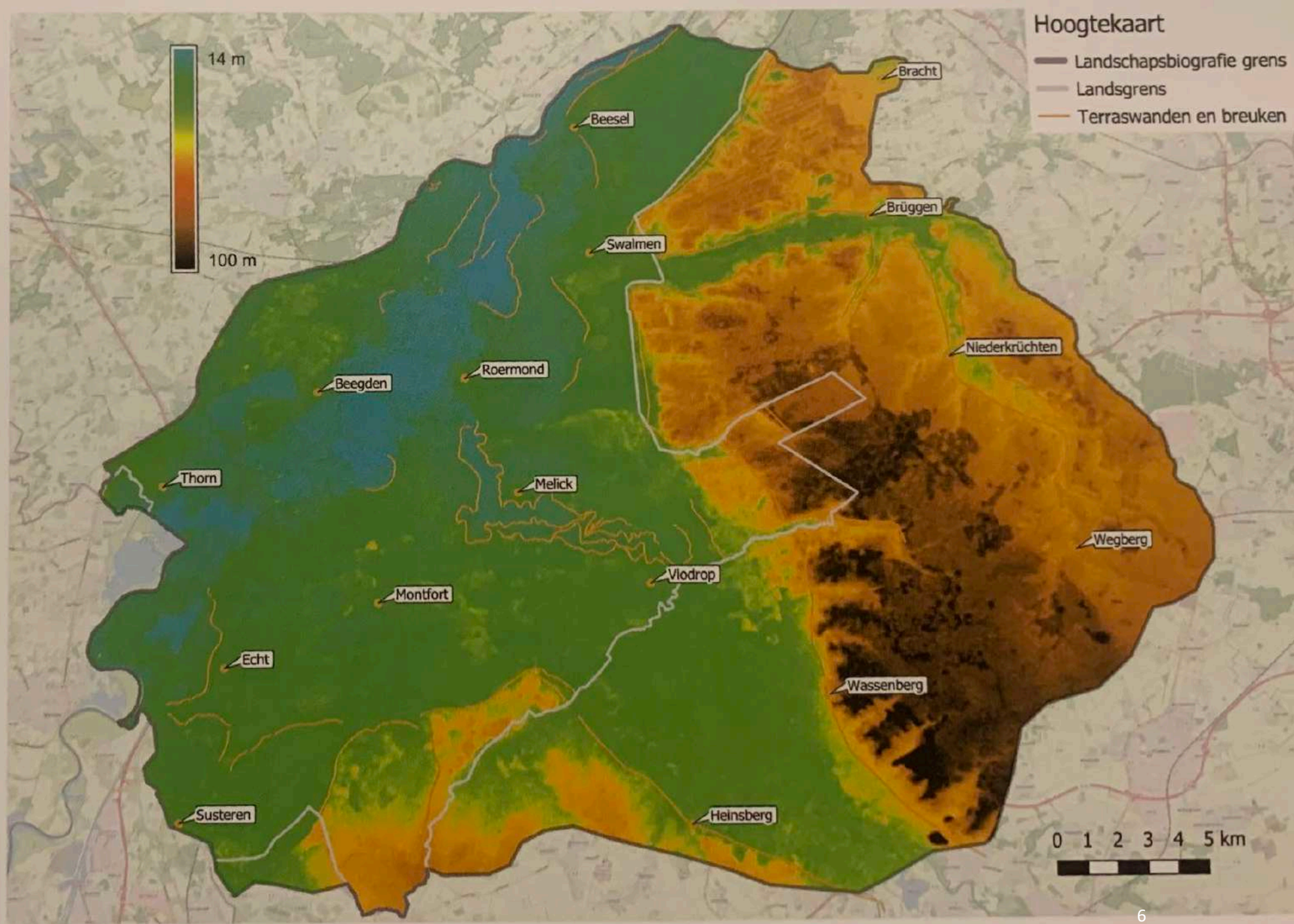


- Connect people
- Initiate and coordinate projects

Project 1

Wetland restoration

Hoogtekaart van het Midden-Limburgse landschap (bron: Topografische kaart Duitsland. Kaartbewerking Hans Heijnen).



Wetland restoration

- Removing top soils
- Diggin new ponds- all year round
- Drainage for agriculture
- Loss of biodiversity
- Decline of remaining bogs and ponds

Wetland restoration



- Google maps



Natuurontwikkeling
in het Herken-
bosscherbroek na
afgraven van de
teelaarde en vernatting
door het dempen van
de Schuttekampsgraaf
(foto: Rob Geraeds).



Veenpuis aan de oever van
Rolvennen op de Meinweg
(foto: Math de Ponti).

Project 2

Road side management

(in application for Interreg subsidy)

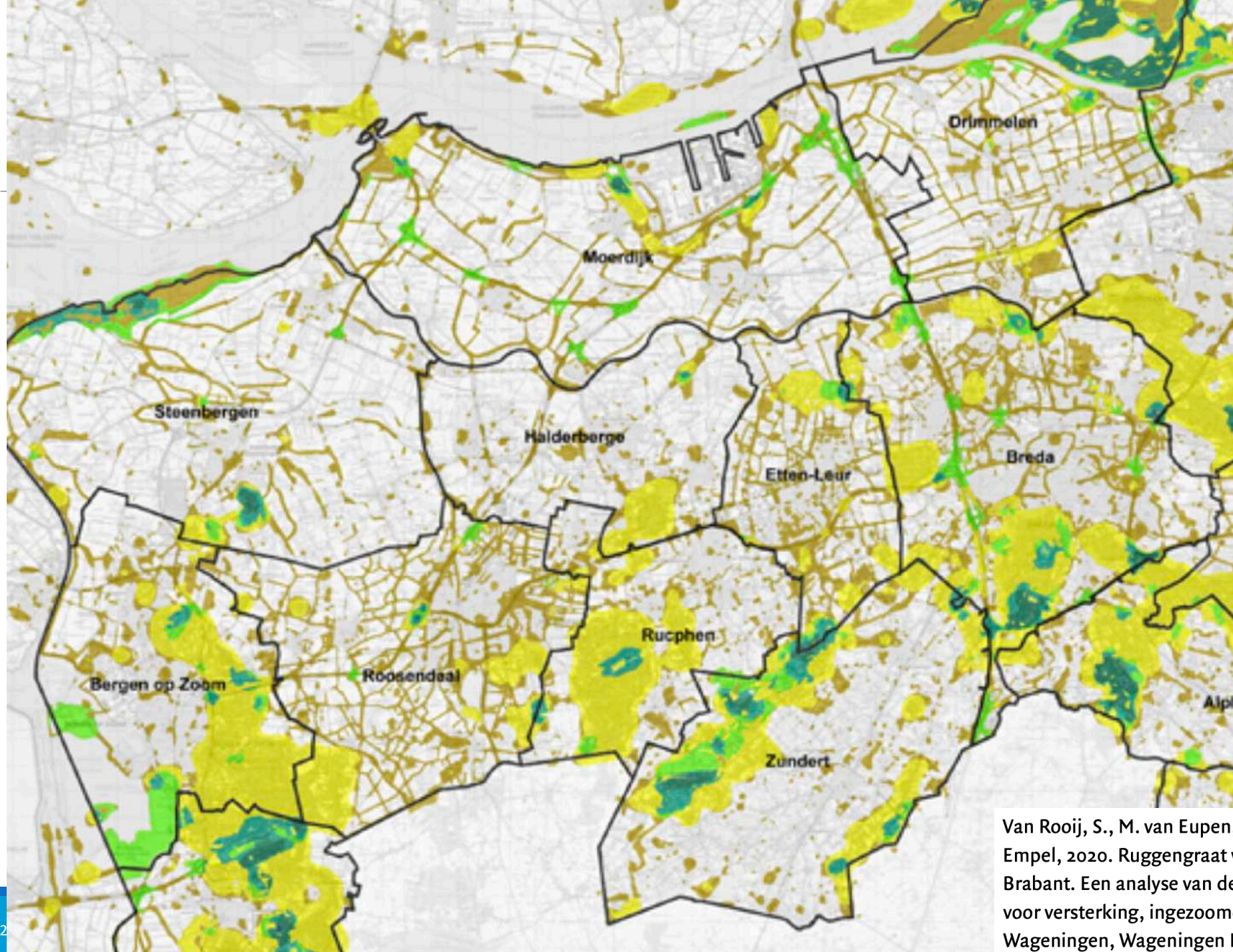






Insect decline

- Fragmentation habitat
- High intensity agriculture
- Chemicals
- Climate Change
-



Van Rooij, S., M. van Eupen, C. Larosch, C. Braat en R. van Empel, 2020. Ruggengraat van het Bijenlandschap in West-Brabant. Een analyse van de huidige situatie en aanbevelingen voor versterking, ingezoomd op Gemeente Moerdijk. Wageningen, Wageningen Environmental Research, Notitie

Meaning of road sides

- Connectivity habitats
- South-North
- Feeding grounds, reproductive grounds
- Needs variety of flowering plants





Ecological road sides

- No slashing → Grass and Nettle
 - Reduce fertility → take away cuttings
 - Slash and vacuum → seeds & insects lost
 - Mow, dry, collect
 - Seeds ripening
 - No mowing in some parts,
-
- Different experience and acceptance in municipalities

1. Räume für Säume

1. Workshops: exchange of knowledge/experience
2. Demo machines
3. Interventions (mowing, strengthen insects)
4. Intervention plan (multiple years)
5. Communication (city council, inhabitants, visitors)
6. Use of material for soil improvement (bokashi/fermentation)

1. Räume für Säume

- 7 Kommunen D/NL
 - Nettetal, Brüggen, Niederkrüchten,
 - Venlo, Beesel, Roerdalen, Echt-Susteren
- Biologische Station Krickebecker Seen
- Naturpark Schwalm-Nette
- Kreis Viersen





Kostenplan

• WP0 Vorbereitung	€ 26.910
• WP1 Projektmanagement	€ 38.621
• WP2 Räume für Säume	€ 316.621
• WP3 Wertstoff Mahd	€ 112.907
• WP4 Perspektive Vertragsnaturschutz	€ 31.913
• WP5 Abstimmung/Kommunikation	€ 49.710
• Gesamt	€ 576.682